



12 Queensmead, St John's Wood Park, London NW8 6RE

Design and Access and Planning Statement
Householder Planning Application

Application for works to rear garden including installation of 2 Air Source Heat Pumps (ASHP) and 1 Air Conditioning Condenser within acoustic enclosure panels,
extension of existing raised terrace and associated landscaping works

October 2024

0 INTRODUCTION

SITE PHOTO

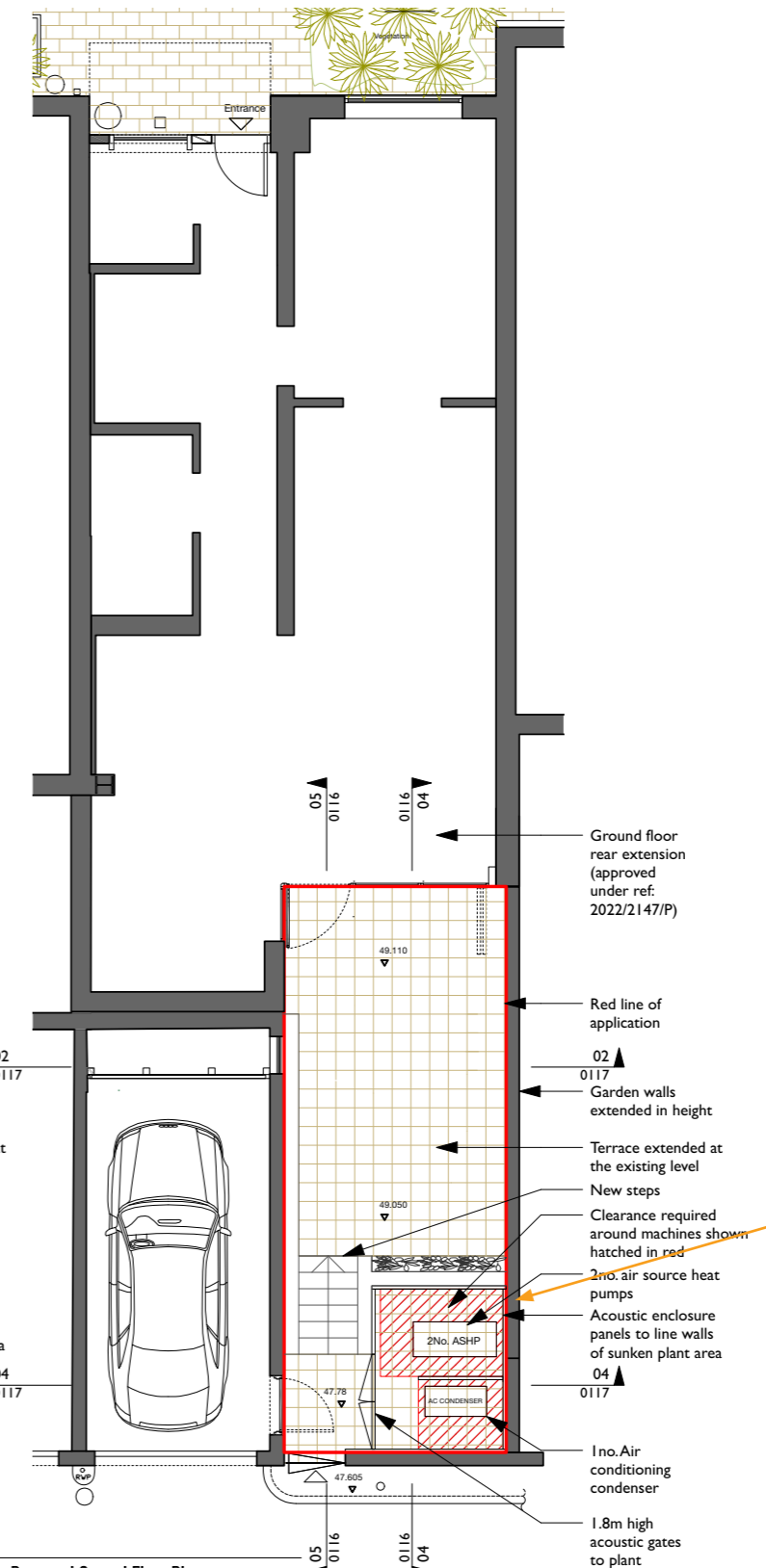
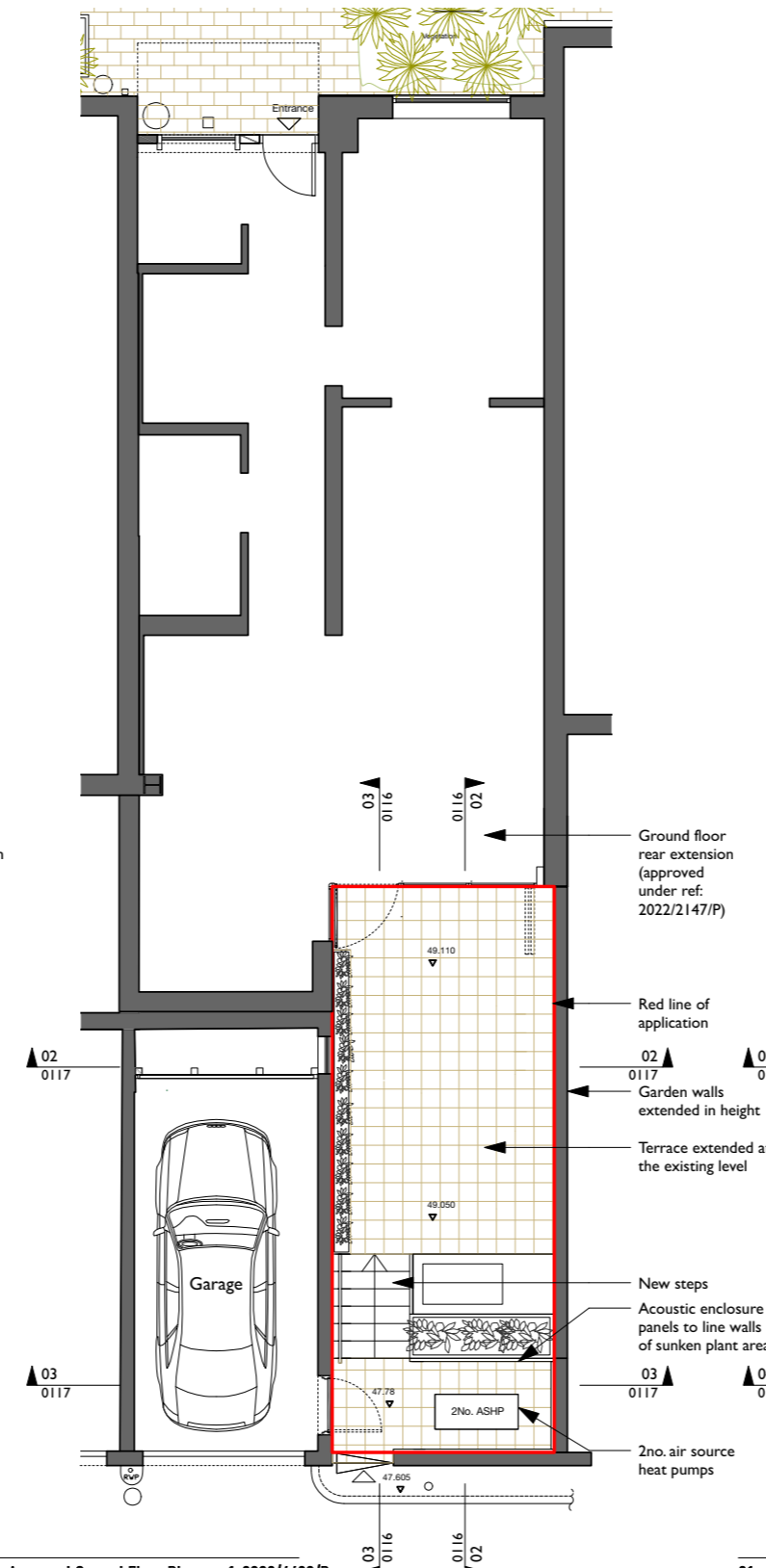
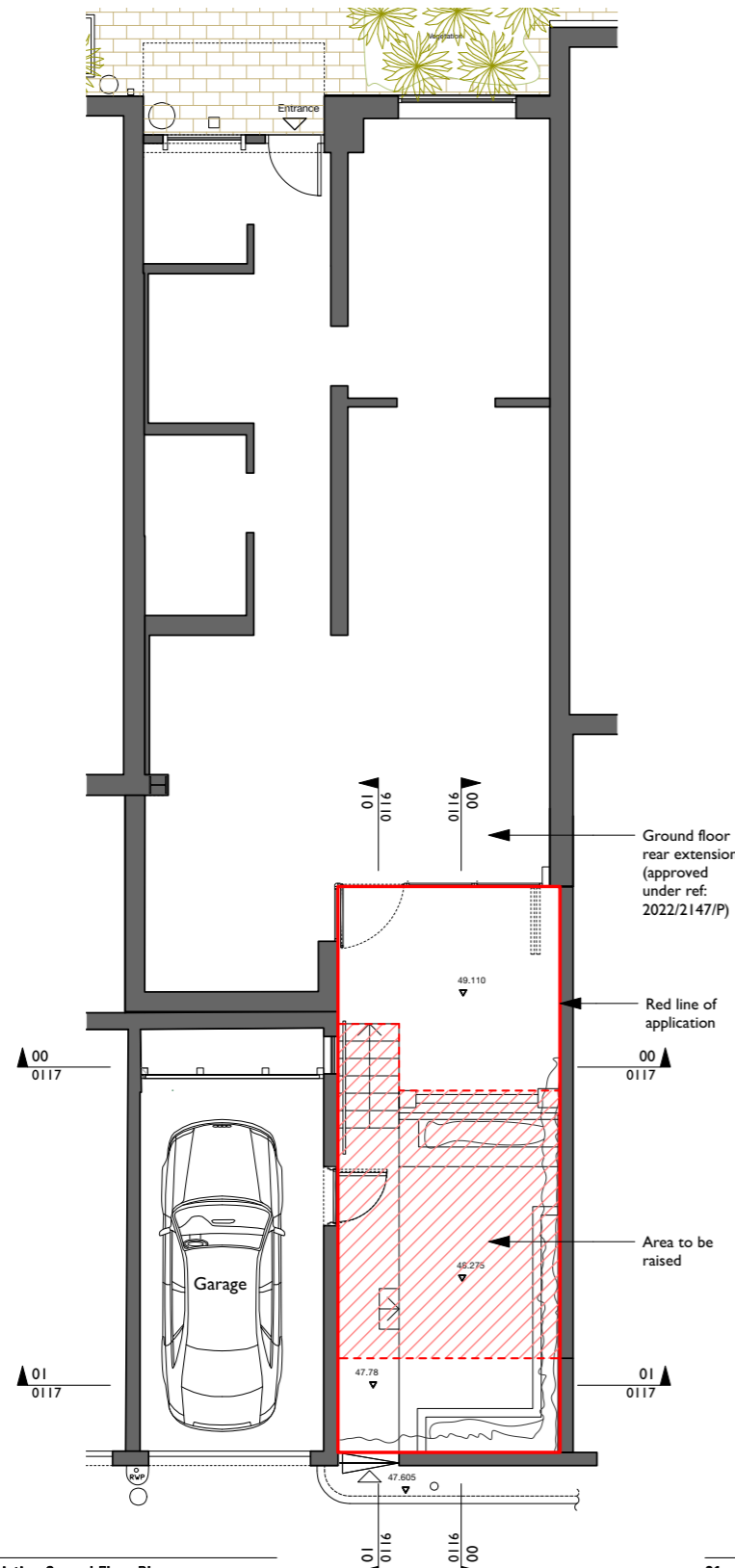


Location of ASHP and Air Conditioning Unit within sunken terraced area at the rear of the garden.

Rear of 12 Queensmead

1 DRAWING COMPARISONS

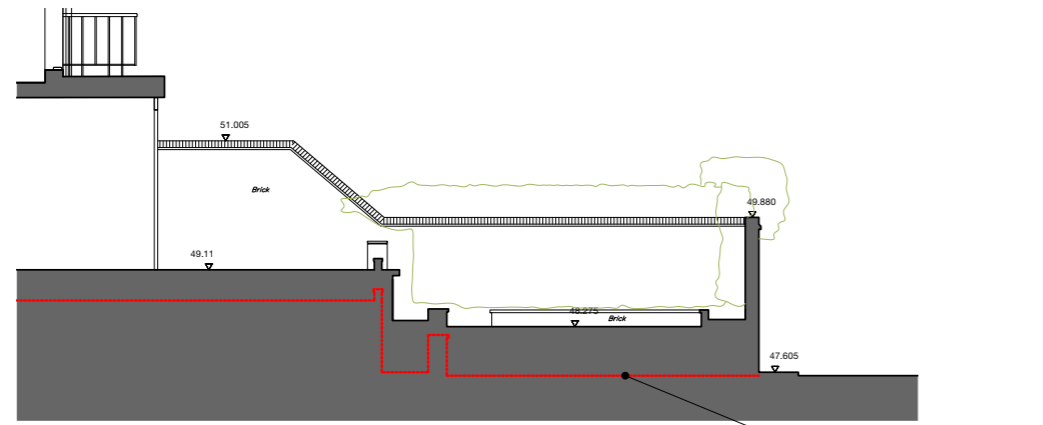
1.1 PROPOSED DESIGN CHANGES GROUND FLOOR PLAN



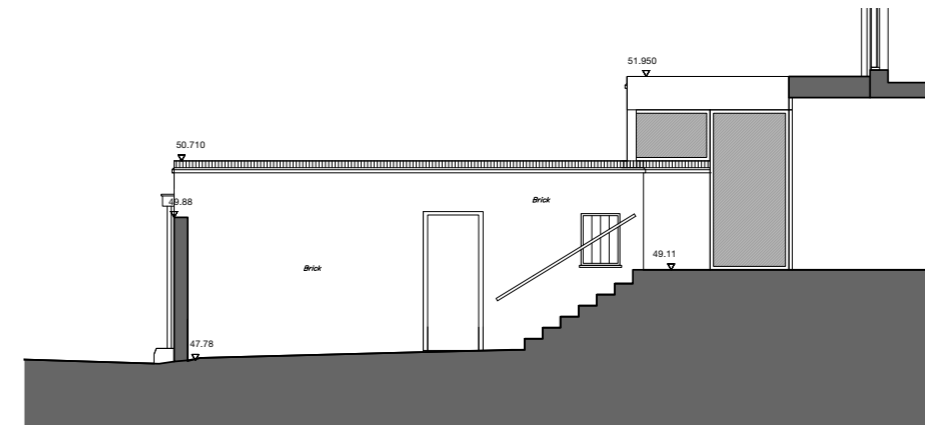
Extent of raised terrace reduced to provide a larger sunken area at the rear of the garden for the additional unit.

1 DRAWING COMPARISONS

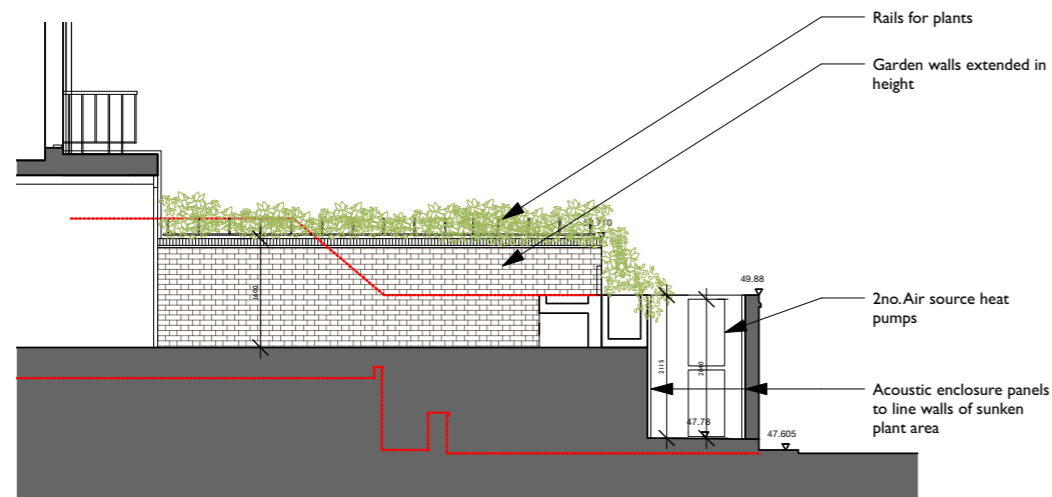
1.2 PROPOSED DESIGN CHANGES SITE SECTIONS / ELEVATIONS



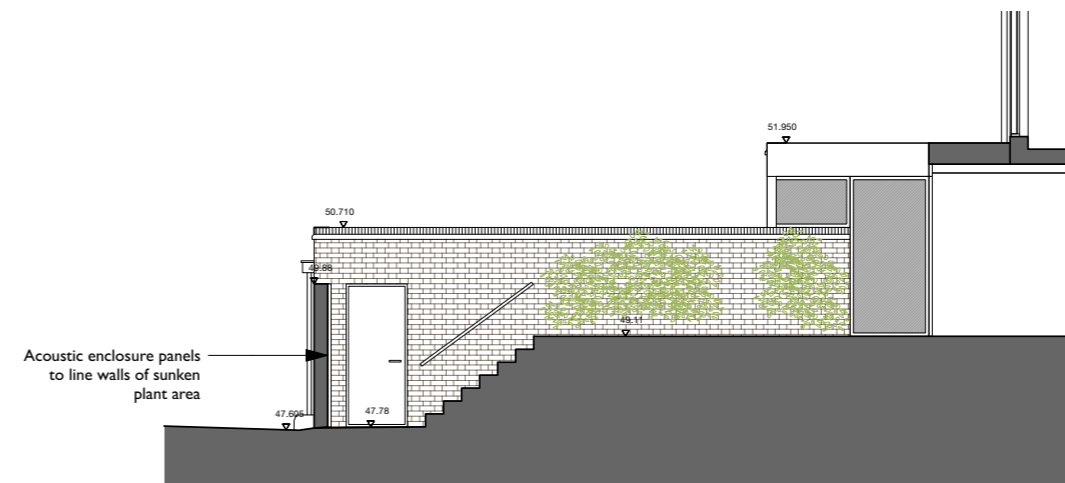
00 - Existing Section/Elevation
1:100@A3



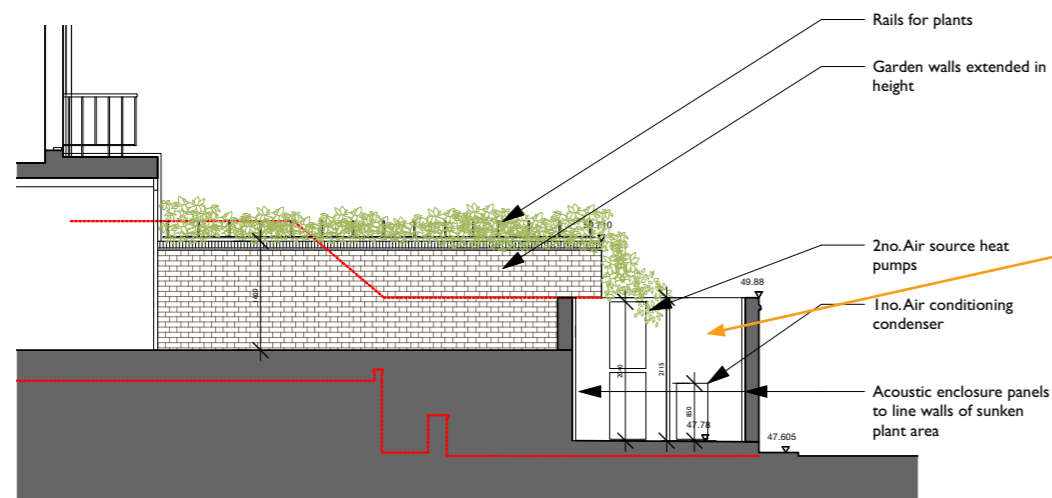
01 - Existing Section/Elevation
1:100@A3



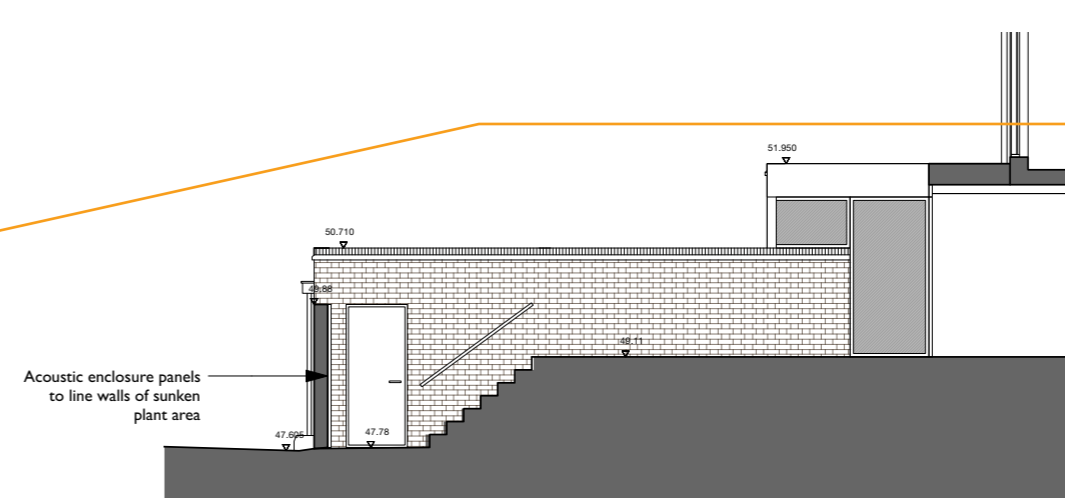
02 - Approved Section/Elevation
1:100@A3



03 - Approved Section/Elevation
1:100@A3



04 - Proposed Section/Elevation

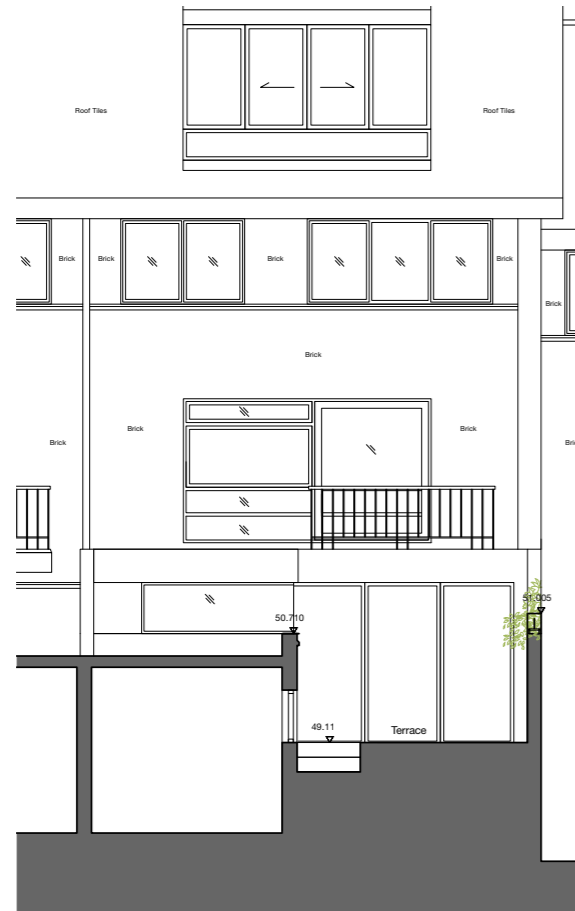


05 - Proposed Section/Elevation

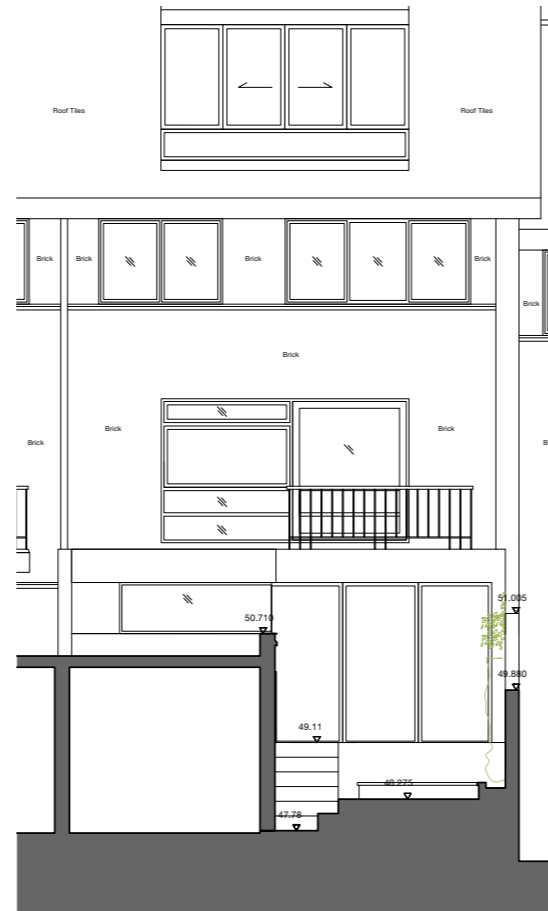
Extent of raised terrace reduced to provide a larger sunken area at the rear of the garden for the additional unit.

1 DRAWING COMPARISONS

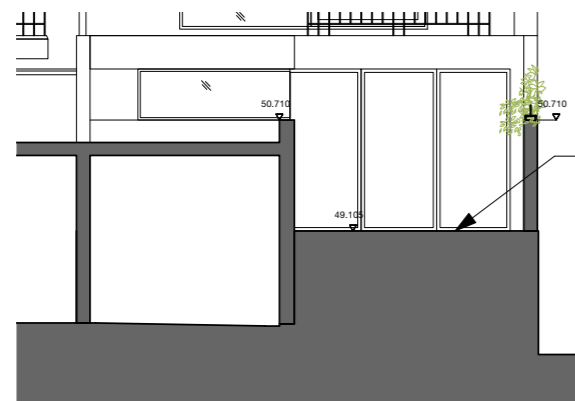
1.3 PROPOSED DESIGN CHANGES FLANK ELEVATION



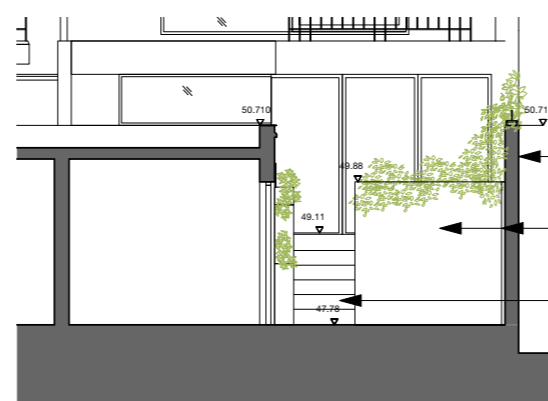
00 - Existing Rear Section/Elevation
1:100/BA3



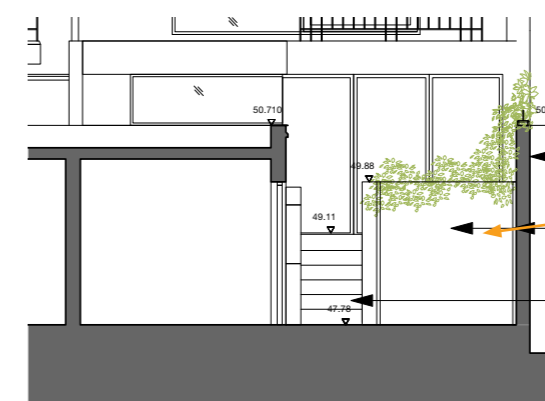
01 - Existing Rear Section/Elevation
1:100/BA3



02 - Approved/Proposed Rear Section/Elevation
1:100/BA3



03 - Approved Rear Section/Elevation
1:100/BA3



04 - Proposed Rear Section/Elevation
1:100/BA3

No material change to the form of the sunken plant area at the rear of the garden

2 ACOUSTIC ENCLOSURE PANELS

DATA SHEET E40c ACOUSTIC ENCLOSURE PANEL MODEL EP50/UF

IMPORTANT : THIS IS NOT A STAND ALONE DOCUMENT AND UNLESS REFERRED TO IN A DATED AND

SPECIFICATION

THE ACOUSTIC ENCLOSURE PANEL COMPRISES A COMBINATION OF SOUND ABSORBENT MATERIALS AND HIGH MASS BARRIERS CONTAINED WITHIN A METAL CASING HAVING AN PLAIN OUTER AND PERFORATED INNER FACE, OFFERING EXCELLENT SOUND REDUCTION AND ABSORPTION PROPERTIES.

PANELS ARE CONSTRUCTED FROM GALVANISED STEEL (SUFFIX G), ZINTEC (SUFFIX Z), PLASTIC COATED STEEL (SUFFIX L) OR ALUMINIUM (SUFFIX A).

THE OUTER CASING IS FORMED FROM PLAIN SHEET METAL AND INSIDE FACE FROM PERFORATED METAL.

PANELS CONTAIN A FIBROUS SOUND ABSORBENT INFILL THAT IS NON-SHEDDING, NON-COMBUSTIBLE, NON-HYGROSCOPIC AND CHEMICALLY INERT. THE INFILL IS FACED WITH GLASS CLOTH TO PREVENT FIBRE MIGRATION.

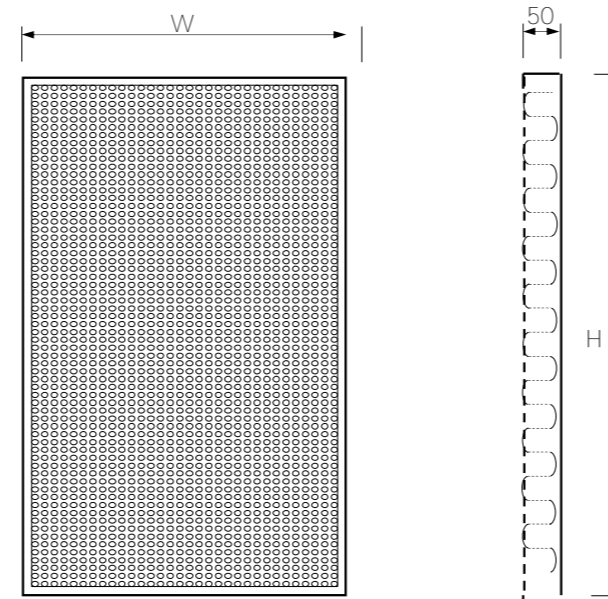
INFILL DENSITY - 45kg/m³.

INFILL THICKNESS - 50mm.

THE CASING CAN BE SUPPLIED WITH A PERIMETER FLANGE FOR FIXING ADJACENT SECTIONS TOGETHER, FIXING THE PANELS INTO THE BUILDERSWORK OPENING OR FIXING INTO THE FRAMEWORK OF AN ACOUSTIC ENCLOSURE (OPTION F).

POLYESTER POWDER FINISH AVAILABLE (SUFFIX P)

DIMENSIONS



FEATURES

ARCHITECTURAL/INDUSTRIAL APPLICATION

ALL METAL CONSTRUCTION

HIGH SECURITY

HIGH ACOUSTIC RATING

HIGH SOUND ABSORPTION

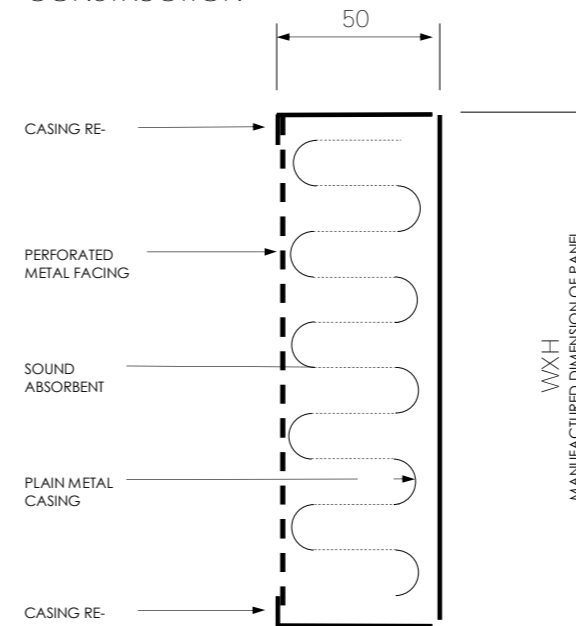
INTERNAL/EXTERNAL USE

OPTIONAL POLYESTER FINISH



ALLAWAY ACOUSTICS
LIMITED

CONSTRUCTION



ACOUSTIC PERFORMANCE

SOUND REDUCTION INDEX B.S.2750/3-1980

63	125	250	500	1000	2000	4000	8000	HZ
17	19	26	33	38	42	45	44	dB

SOUND ABSORPTION B.S.3638-1987

63	125	250	500	1000	2000	4000	8000	HZ
.10	.25	.65	1.00	1.00	1.00	.95	.90	-

NOTES

THIS DATA SHEET IS TO BE READ IN CONJUNCTION WITH THE EQUIPMENT SCHEDULE

PANELS WILL BE SUPPLIED WITHOUT SUPPORT STEELWORK, BRACKETS, FIXINGS OR MASTIC UNLESS OTHERWISE STATED.

PANELS MORE THAN 1800 WIDE OR 2500 HIGH MAY BE MANUFACTURED IN SECTIONS FOR ON SITE ASSEMBLY.

SUFFIX

A - ALUMINIUM SUBSTRATE

G - GALVANISED STEEL SUBSTRATE

Z - ZINTEC SUBSTRATE

L - PLASTIC COATED STEEL

P - STOVED POLYESTER POWDER COAT

F - PERIPHERAL FIXING FRAME

SP - SPECIAL CONSTRUCTION, REFER TO EQUIPMENT SCHEDULE FOR DETAILS.

WEIGHT

ACTUAL PANEL WEIGHTS ARE GIVEN ON THE EQUIPMENT SCHEDULE.

APPROXIMATE WEIGHT:
38kg/M² GALVANISED
41kg/M² ALUMINIUM

BUILDERSWOR

THE W AND H DIMENSIONS GIVEN ON THE CERTIFIED EQUIPMENT SCHEDULE ARE AS MANUFACTURED.

ADEQUATE CLEARANCE MUST BE ALLOWED WHEN CONSTRUCTING THE BUILDERSWORK OPENING.

STANDARD

THERE ARE NO STANDARD SIZES.

PANELS ARE MANUFACTURED TO ORDER.

DOMINIC
LAMB
ARCHITECTS
134 Lots Road, London SW10 0RJ
studio@lamb.london
+44 7793032003