



SYMMETRYS
STRUCTURAL / CIVIL ENGINEERS

SITE VISIT REPORT

12 Ingestre Road,
London,
NW5 1UX
17371-RPT-240816

[SYMMETRYS.COM](https://www.symmetrys.com)



REVISION HISTORY

Revision	Description	Date	By	Checked
A	Initial Issue	16.08.2024	SMJ	AH

TABLE OF CONTENTS

1. Purpose of Visit
2. General Observations and Site Progress
3. Observations Requiring Action

APPENDICES

Appendix A – Site Photographs

Appendix B – Structural Sketches

- 17371-SYM-XX-00-DR-SK-0050 – Ground Floor External Slab Structural Details

DISTRIBUTION LIST

Name	Organisation
Hiten Raghvani	Four Quarters Ltd

This report is to be read in conjunction with any previous site reports and historic photo records.



1.0 Purpose of Visit

- 1.1 Sam Margrave – Jones MEng CEng AStructE, of Symmetrys attended site at 8:15am of the 16th August 2024 to carry out a pre-pour review of the proposed reinforced concrete (RC) ground bearing slab.
- 1.2 At the time of inspection, the weather was clear and dry.

2.0 General Observations and Site Progress

- 2.1 At the time of inspection, site operatives were awaiting delivery of the concrete later that day. Arrangements had been made to allocate additional resources to accommodate potential comments made by the engineer prior to any pouring of concrete.
- 2.2 Bottom cover was provided via fragmented 50mm concrete pavers. Top cover was provided via makeshift chairs formed from reinforcing offcuts.
- 2.3 In 1No. localised location, the bottom cover was noted slightly low at c.35mm. The contractor made the appropriate amendments to the bottom mesh during the engineer's visit.
- 2.4 Mesh reinforcement was confirmed A393 Top and bottom which was appropriately lapped and fixed.
- 2.5 Following all necessary amendments to the rebar., It was concluded that the reinforcement, setting out and cover levels were all in acceptable accordance with the structural engineer's information, and the pour was approved without further comment.
- 2.6 Photos of the concrete pour are included within this report, but were not observed by Symmetrys.

3.0 Observations Requiring Action

The following items were viewed on site and identified as requiring remedial action. Once the remedial action has been agreed with Symmetrys, the contractor is to provide photographs of the remediated works, or inform Symmetrys so that an additional site visit can be arranged to view all the remediated works at one time.

Location/Reference	Observation	Photo Ref	Proposed Next Step	Closed/Open
Rebar Bottom Cover	As-drawn bottom cover is 50mm. Local areas of 35mm cover were noted by the engineer. Cover was increased immediately by the contractor.	Photo 4	None required. Cover increased during site inspection.	Closed

Table 1 : Site Observations Requiring Action



SYMMETRYS
STRUCTURAL / CIVIL ENGINEERS

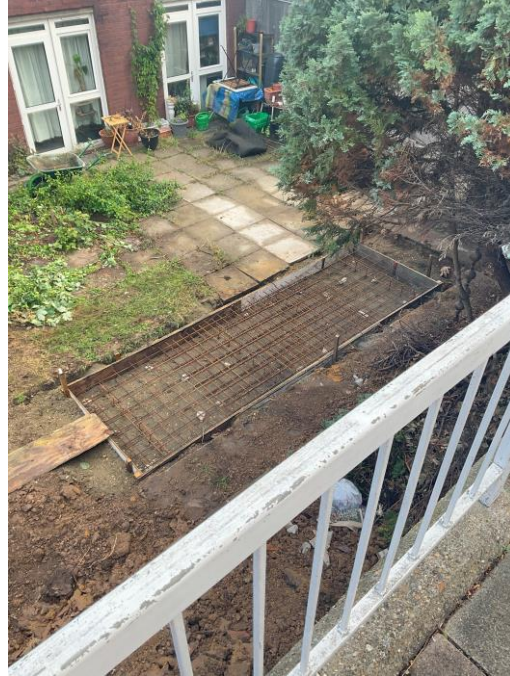
12 INGESTRE ROAD
LONDON

APPENDIX A – SITE PHOTOGRAPHS



SYMMETRYS
STRUCTURAL / CIVIL ENGINEERS

12 INGESTRE ROAD
LONDON



Photograph 1 – General Views of Slab during pre pour inspection



Photograph 2 – Minimum Easement zones to neighbouring retaining walls verified.

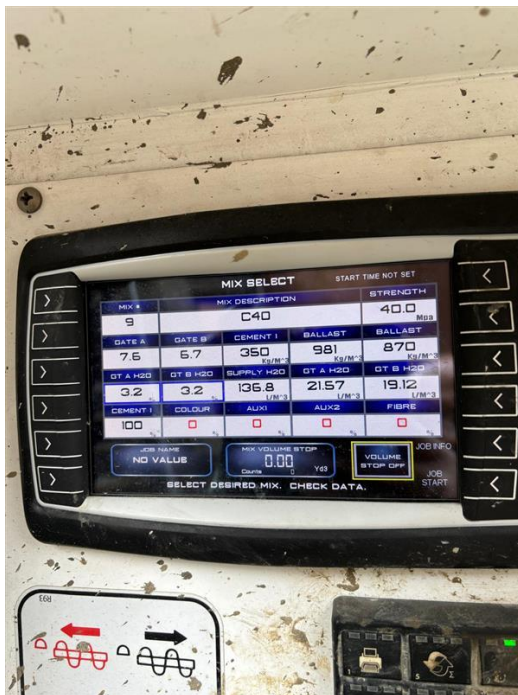


SYMMETRY'S
STRUCTURAL / CIVIL ENGINEERS

12 INGESTRE ROAD
LONDON



Photograph 3 – 4800mm x 1500mm x 200mm Verified



Photograph 4 – RC32/40 concrete and 50mm Bottom cover confirmed. Note cover photo was taken following comments from structural engineer.



SYMMETRY'S
STRUCTURAL / CIVIL ENGINEERS

12 INGESTRE ROAD
LONDON



Photograph 5 – Concrete being poured, tamped levelled. Photos courtesy of contractor.



SYMMETRYS
STRUCTURAL / CIVIL ENGINEERS

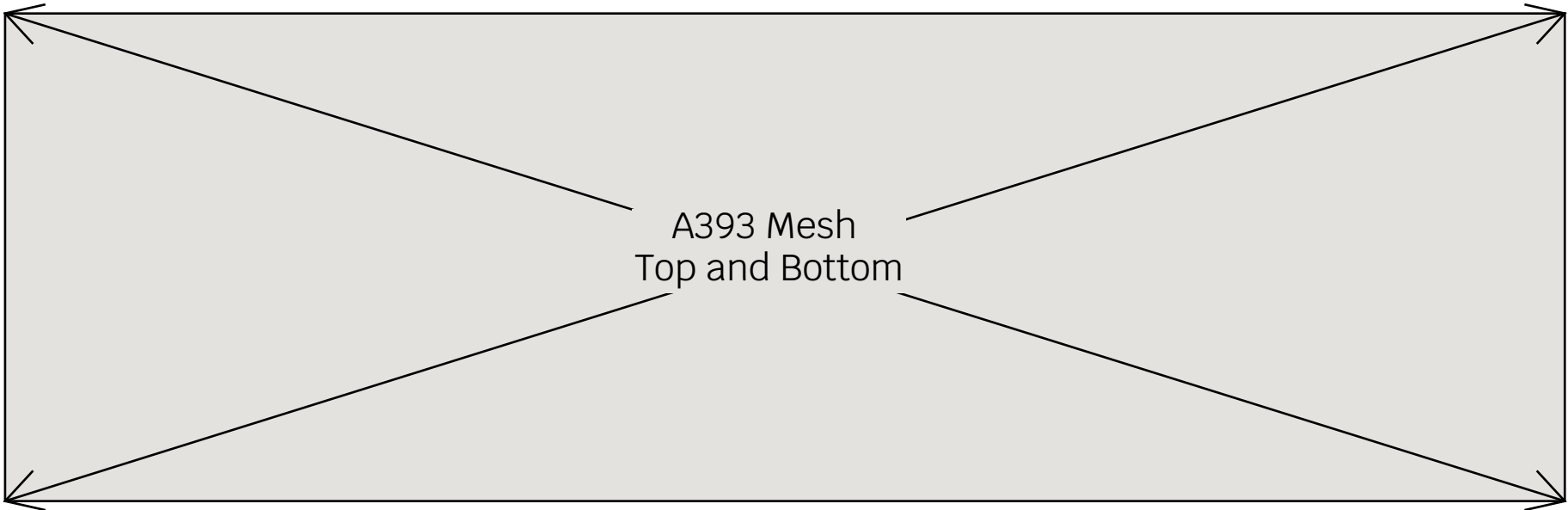
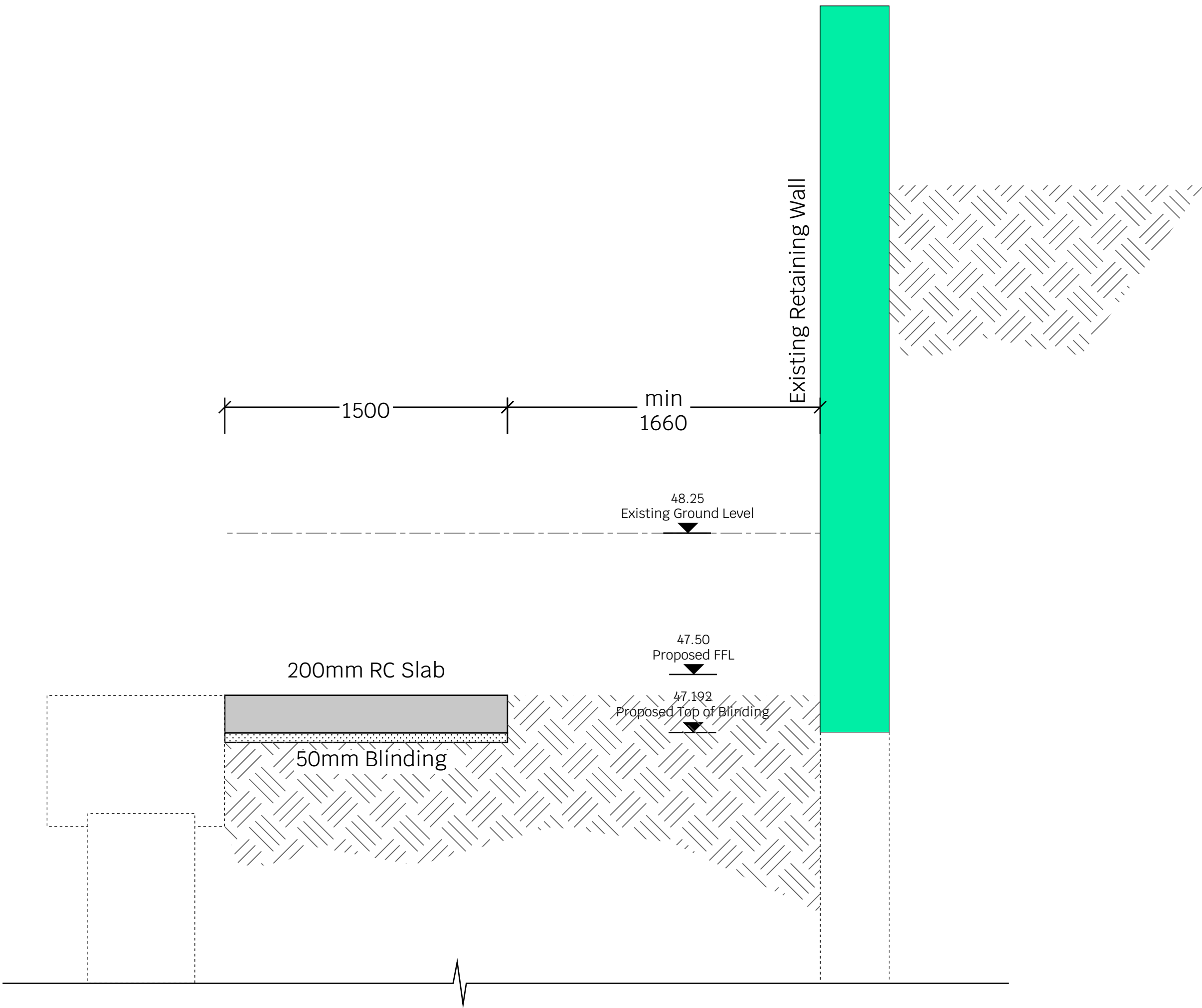
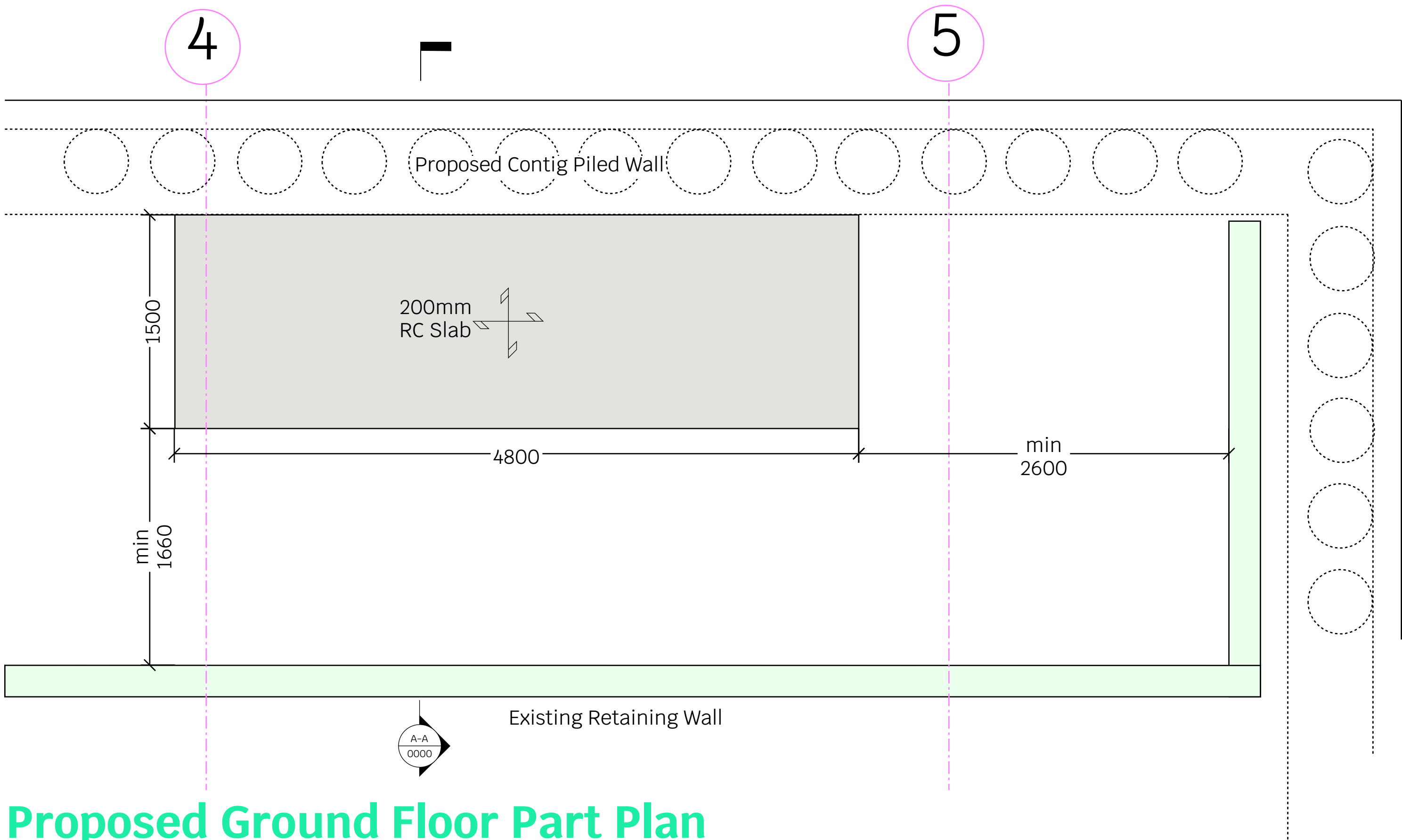
12 INGESTRE ROAD
LONDON

APPENDIX B – STRUCTURAL SKETCHES

12 Ingestre Road

Proposed Ground Floor

External Slab Details



Concrete Grade RC32/40

35mm Top Cover

50mm Side Cover

50mm Bottom Cover

Notes

- This drawing is to be read in conjunction with all relevant architects & engineers drawings and specifications
- Do not scale from this drawing
- This drawing is indicative and not a formal drawing.

WARNING RISK
Indicates a residual risk as warning

COMPULSORY RISK
Indicates a residual risk requiring a compulsory action

PROHIBITIVE RISK
Indicates a residual risk requiring a prohibitive action

INFORMATION RISK
Indicates a residual risk for information

PI	01.08.24	SMJ	AH	For Comment
Rev	Date	Drwn	Chkd	Amendments
Drawing status				Preliminary

SYMMETRYS
STRUCTURAL / CIVIL ENGINEERS

T 020 8340 4041 / E INFO@SYMMETRYS.COM / SYMMETRYS.COM / LONDON W8 8SL

Job Title
Ingestre Road
London
NW5 1UX

Drawing Title						
Proposed Ground Floor External Slab Details						
Project	Company	Zones	Level	Type	Role	Number
17371 - SYM - XX - 00 - DR - SK - 0050						
Scale: NTS @ A1		Drawn by: SMJ		Revision :		
Date: Aug 2024		Checked: AH		P1		