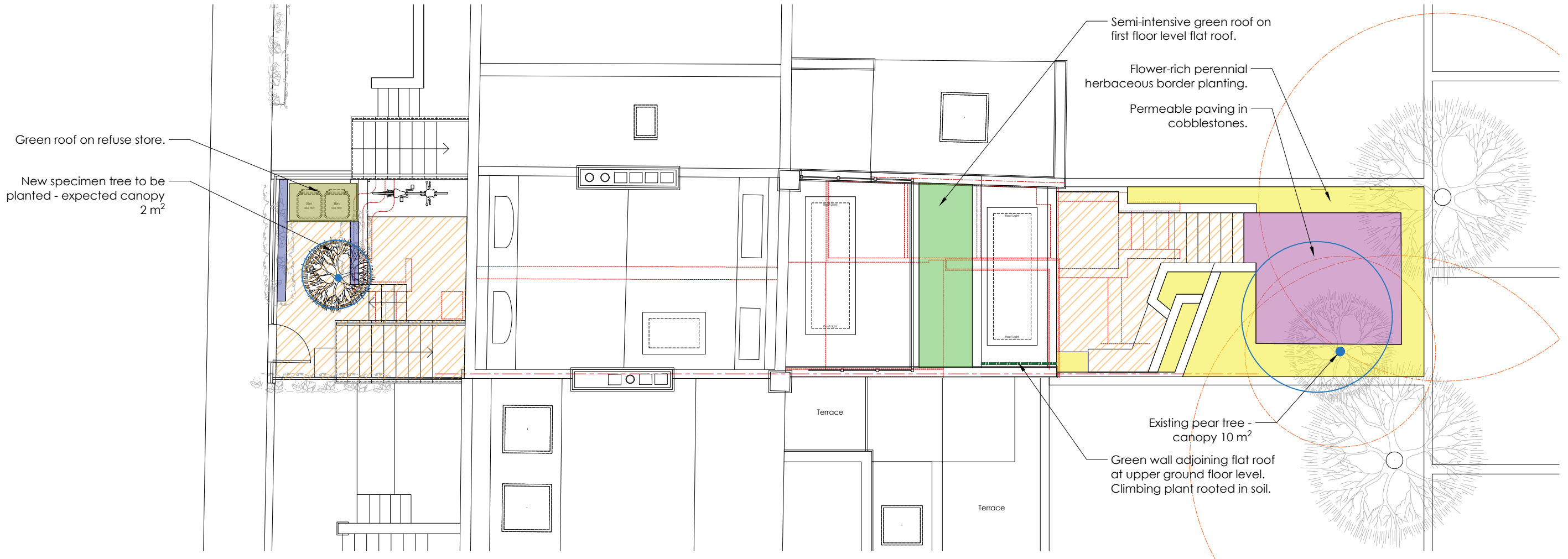


0 1 2 3 4 5m



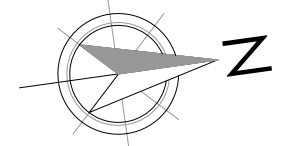
Factor	Area (m ²)	Contribution
0.7	5.5	3.85
0.7	13.5	9.45
0.6	1.4	0.84
0.6	12	7.2
0.6	3.7	2.22
0.3	1.5	0.45
0.1	11.2	1.12
0	27.7	0
Total contribution		25.13
Total site area		130 m ²
Urban Greening Factor		0.1933

- Extensive green roof with substrate of minimum settled depth of 80mm (or 60mm beneath vegetation blanket) – meets the requirements of GRO Code 2014.
- Flower-rich perennial planting.
- Hedges (line of mature shrubs one or two shrubs wide).

- Standard trees planted in pits with soil volumes less than two thirds of the projected canopy area of the mature tree.
- Green wall – modular system or climbers rooted in soil.
- Extensive green roof of sedum mat or other lightweight systems that do not meet GRO Code 2014.

- Permeable paving.
- Sealed surfaces (e.g. concrete, asphalt, waterproofing, stone).

5cm
4
3
2
1



Proposed Landscape Plan for Urban Greening Factor calculation
Scale 1:100

1 2 3 4 5cm

catfish
architecture + design
Cattfish Studio Limited
24 Park Road London E17 7QF
www.cattfishstudio.ltd.uk

NOTES:
All dimensions to be checked on site.
Survey carried out on non-intrusive basis.
Areas concealed by built in furniture or otherwise inaccessible not surveyed.

rev	date	notes
B	17.10.24	Air source heat pump omitted
A	12.10.24	Updated
/	11.10.24	First Issue

FOR PLANNING

title	Proposed Plan	
client	Anne-Marie & Graham Baker	
job	12 Modbury Gardens	
scale	dwg number	revision
1:100	333/030	B