



Project
Kentish Town - Freedom
PD109215/8

4 September 2024

GM Developments



GM Developments

223-229 Dawes Road
London
Greater London.
SW6 7RD

Project Title/Address: **Kentish Town - Freedom**

Date: 4 September 2024

For the attention of: **Sirs**

This requote was requested by lavinia@gmlondon.com to show SVP boxing sizes and fill gap on ATP 18 between wall unit and boxing.

Please find attached our quotation **PD109215** version **8** for the above project. Please note:

- Prices for furniture are firm on all deliveries until 30 June 2025.
- Please check the delivery lead time when you place your order.
- **Please note all prices DO NOT include VAT**

We will raise a new version of our quotation each time the details change. Our invoices will show the quotation version on which they are based. Please ensure your accounts staff check our invoices against the correct quotation version.

This quotation is personal to the addressee. It may not be assigned without the prior written consent of The Symphony Group plc. Your acceptance of this quotation is subject to our terms and conditions, which can be found at <https://www.symphony-group.co.uk/terms-and-conditions/> or, if one has previously been agreed, your framework agreement.

If you have a query please refer to the contact details:

- Account Manager: Luke Gibbs | 07721 689865 | luke.gibbs@symphony-group.co.uk
- Sales Office Contact: PD Sales | 01226 446030 | pdsales@symphony-group.co.uk
- Design Contact: Vanessa Grant | 01226 446308 | DesignEnquirySouth@symphony-group.co.uk

Yours faithfully,
Sean Connolly
Design & Estimating Manager

Scope Of Work

A more detailed breakdown of our installation levels of service will be provided and discussed at site set up. If further information is required prior to site set up please contact your business account manager to discuss.

The service level included in your quote is
Supply and fit deluxe, electrical fit

Service	Included
Delivery	Yes
Offload and place furniture in plot	Yes
Cabinet installation	Yes
Dry Fit	No
Electrical connection	Yes
Gas connection	No
Waste to customer skip	Yes

There are differing levels of protection on the quote.
Please refer to the individual design schedule of items to confirm which is included in each type.

This table only applies to products supplied by Symphony only.

Appliance	Connection	Included
Oven	Connect to electrical supply provided by others	Yes
	Connect to gas supply provided by others (Gas Safe registered fitter)	No
Hob	Connect to electrical supply provided by other	Yes
	Connect to gas supply provided by others (Gas Safe registered fitter)	No
Range cooker	Connect to electrical supply provided by others	Yes
	Connect to gas supply provided by others (Gas Safe registered fitter)	No
Cooker hood	Connect to electrical supply provided by other	Yes
	Connect to ducting	Yes
Built-in compact appliance	Connect to electrical supply provided by others	Yes
Dishwasher	Connect to electrical supply provided by others	Yes
	Connect to water supply provided by others	Yes
Laundry	Connect to electrical supply provided by others	Yes
	Connect to water supply provided by others	Yes
Refrigeration	Connect to electrical supply provided by others	Yes
	Connect to water supply provided by other	Yes
Sink & taps	Connect to waste & water	No
	Waste trap included	No
	Cut out to sink (subject to template being provided)	Yes
Lighting	Mounted to cabinet	Yes
	Connected to transformer	Yes
	Transformer connected to mains	No

Daywork Rates

These rates are correct at the date of quotation. They are subject to change at any time. Any queries should be discussed with your business account manager.

Description	Rate
Site Work – Per kitchen fitter	37.50/hr up to 3hrs after which the following apply
Site Work – Per kitchen fitter	150 half day
Chargeable customer care	400 per person, per day
Chargeable customer care	800 two people, per day

Summary

Drawing No	Section Type	Ranges	Total
Housetype: AT15 1B2P WC			
297228_c	1st Visit	Hacienda Freedom Contract (110)	7,997.58
		Plaza Freedom Contract (110)	8,093.59
		Turin Freedom Contract (110)	8,127.23
		Urban Freedom Contract (110)	8,127.23
	2nd Visit	Hacienda Freedom Contract (110)	1,119.87
		Plaza Freedom Contract (110)	1,119.87
		Turin Freedom Contract (110)	1,119.87
		Urban Freedom Contract (110)	1,119.87
Housetype: AT16 1B2P WC			
297227_c	1st Visit	Hacienda Freedom Contract (110)	6,307.16
		Plaza Freedom Contract (110)	6,375.15
		Turin Freedom Contract (110)	6,404.03
		Urban Freedom Contract (110)	6,404.03
	2nd Visit	Hacienda Freedom Contract (110)	1,119.87
		Plaza Freedom Contract (110)	1,119.87
		Turin Freedom Contract (110)	1,119.87
		Urban Freedom Contract (110)	1,119.87
Housetype: AT17 1B2P WC			
297226_c	1st Visit	Hacienda Freedom Contract (110)	6,574.65
		Plaza Freedom Contract (110)	6,663.30
		Turin Freedom Contract (110)	6,692.18
		Urban Freedom Contract (110)	6,692.18
	2nd Visit	Hacienda Freedom Contract (110)	1,119.87
		Plaza Freedom Contract (110)	1,119.87
		Turin Freedom Contract (110)	1,119.87
		Urban Freedom Contract (110)	1,119.87
Housetype: AT18 1B2P WC			
297225_c	1st Visit	Hacienda Freedom Contract (110)	7,161.22
		Plaza Freedom Contract (110)	7,249.49
		Turin Freedom Contract (110)	7,287.89
		Urban Freedom Contract (110)	7,287.89
	2nd Visit	Hacienda Freedom Contract (110)	1,119.87
		Plaza Freedom Contract (110)	1,119.87
		Turin Freedom Contract (110)	1,119.87
		Urban Freedom Contract (110)	1,119.87

Drawing No	Section Type	Ranges	Total
Housetype: AT19 1B2P WC			
297224_b	1st Visit	Hacienda Freedom Contract (110)	4,330.70
		Plaza Freedom Contract (110)	4,386.34
		Turin Freedom Contract (110)	4,447.32
		Urban Freedom Contract (110)	4,447.32
	2nd Visit	Hacienda Freedom Contract (110)	1,119.87
		Plaza Freedom Contract (110)	1,119.87
		Turin Freedom Contract (110)	1,119.87
		Urban Freedom Contract (110)	1,119.87
Housetype: COMMUNAL AREA			
338988_d	1st Visit	Hacienda Freedom Contract (110)	1,863.96
		Plaza Freedom Contract (110)	1,897.83
		Turin Freedom Contract (110)	1,928.32
		Urban Freedom Contract (110)	1,928.32
	2nd Visit	Hacienda Freedom Contract (110)	1,563.52
		Plaza Freedom Contract (110)	1,565.09
		Turin Freedom Contract (110)	1,565.09
		Urban Freedom Contract (110)	1,565.09

Schedule & Cubic Capacity
AT15 1B2P WC

Drawing No. **297228_c**Revision: **c**Revision Date **04/09/2024**
Total cubic metres of storage: **0.96**

Main

Plan No.	Qty.	Code	Hdg	Description	Dims	CC (M3)
1	1	BBU6592R	0	Base Blender(Rep.End Match) 920/650		0.00
2	1	BU63F	L	Base Unit F/HT 600/3/870	600/300/870	0.10
3	1	BBU6592R	0	Base Blender(Rep.End Match) 920/650		0.00
4	1	BBU6592R	0	Base Blender(Rep.End Match) 920/650		0.00
5	1	BBU6592R	0	Base Blender(Rep.End Match) 920/650		0.00
6	1	PD66D3	0	Pan Drawer Unit (3 Drawers) 6/6/870	600/600/870	0.19
7	1	BLU7523R	0	Tall Blender(Replace.End) 2400/750		0.00
8	1	OH6618E	R	Sgl Oven Hsg Unit(18E) 600/600/2100	600/600/2100	0.28
9	1	BLU7523R	0	Tall Blender(Replace.End) 2400/750		0.00
10	1	WU672PGL	R	Wall Unit LH End 600/330/724	600/300/724	0.12
11	1	WU4572P	R	Wall Unit 450/330/724	450/300/724	0.09
12	1	WU372P	L	Wall Unit 300/330/724	300/300/724	0.06
13	1	WU672P	L	Wall Unit 600/330/724	600/300/724	0.12
16	1	RPXKITCM1921	0	ROPOX Corner Manual 1.9x2.1 Kit		0.00
	1	FRONTPNL72	0	Frontal Match Filler Panel		0.00
	1	FRONTPNL72	0	Frontal Match Filler Panel		0.00

Worktops

Plan No.	Qty.	Code	Hdg	Description	Dims
	1	PV40	0	PVC Edged Worktop 40mm	1300/637
	1	PV40	0	PVC Edged Worktop 40mm	1500/650
	1	PV40	0	PVC Edged Worktop 40mm	2000/637
	1	PV40	0	PVC Edged Worktop 40mm	700/510
	1	PV40	0	PVC Edged Worktop 40mm	900/650
	2	TOPSEALBOLT	0	Topseal Easibolt Pack	

Sinks

Plan No.	Qty.	Code	Hdg	Description	Dims
	1	EL860NCWKSP	0	LEISURE Euroline 860x435 + Sink Pad	

Taps

Plan No.	Qty.	Code	Hdg	Description	Dims
	1	44320TPK	0	Insinkerator HC3300C Hot/Cold Tap	

Accessories

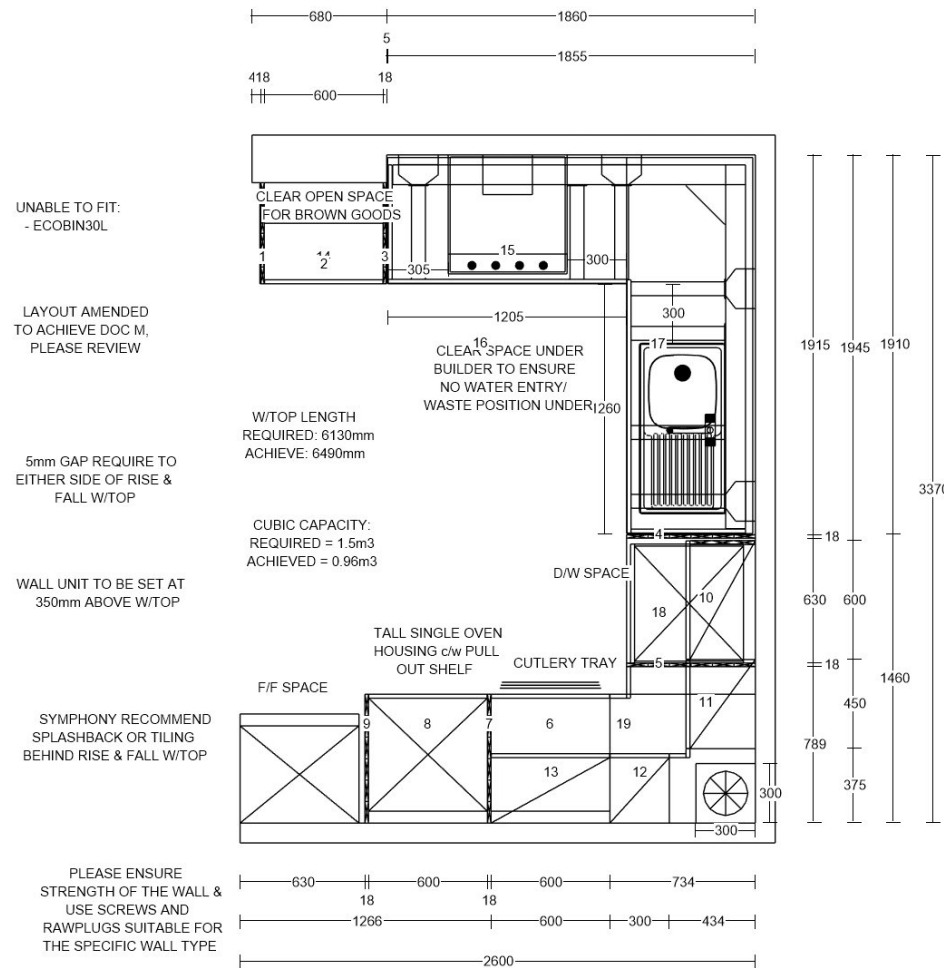
Plan No.	Qty.	Code	Hdg	Description	Dims
	1	APPENVELOPE	0	Appliance Pack Envelope	2nd
	1	CTRAYVSTD6	0	Standard Cutlery Tray 600mm	
	1	DECPLINTH3AU	0	Plinth Aluminium 3000 Pk +Brackets	
	2	RUNITPROTECT	0	Kitchen Protect.Material 10m x 1.5m	
	2	SOFTCLOSE5	0	Soft Close Slide On 110'Hinge (x5)	
	1	VENTGRIDGR	0	Aeration Grid Grey 510/45/15	

Accessories - Continued

3	WTOPPROTECT	0	Corrugated Worktop Protect 2.4x1.2
---	-------------	---	------------------------------------

Appliances

Plan No.	Qty.	Code	Hdg	Description	Dims
	1	HI642CTT1	0	HOOVER 60CM INDUCTION HOB BLK	2nd
	1	HTS6CBK5XWIF	0	HOOVER 60CM T-SHAPE HOOD BLK S/S	2nd
	1	KOFGC40RX	0	ELECTROLUX Sgl.Right Side Open Oven	2nd



Plan

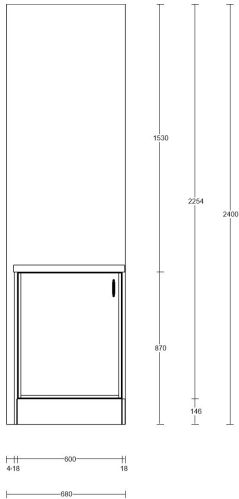
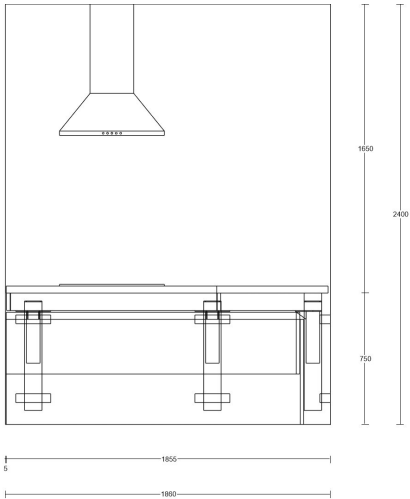
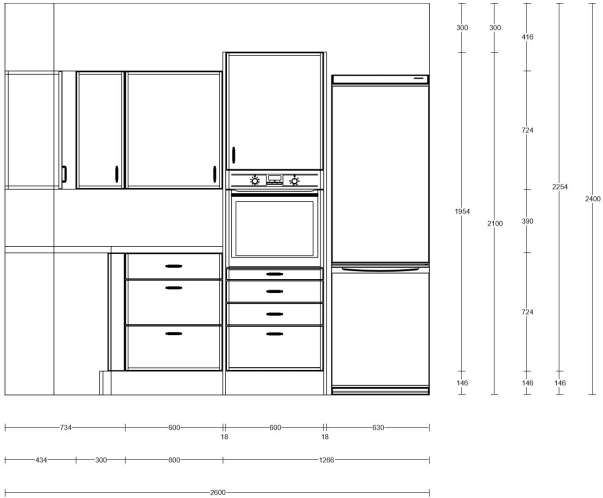
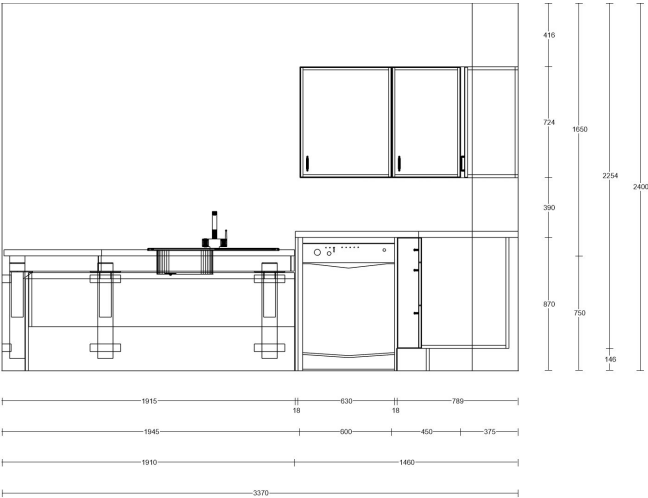
AT15 1B2P WC

Drawing No.: **297228_c**

Revision: **c**

Revision Date: **04/09/2024**

Any drawings are offered as a guide only for approval by our customer. No responsibility is accepted for their accuracy in relation to orders placed including for the fitting of our goods within the dimensions shown.



Elevations

**AT15 1B2P
WC**

Drawing No.:
297228_c

Revision:**c**

Revision Date:
04/09/2024

Any drawings are offered as a guide only for approval by our customer. No responsibility is accepted for their accuracy in relation to orders placed including for the fitting of our goods within the dimensions shown.

Schedule & Cubic Capacity
AT16 1B2P WC

Drawing No. **297227_c**Revision: **c**Revision Date **04/09/2024**
Total cubic metres of storage: **0.96**

Main

Plan No.	Qty.	Code	Hdg	Description	Dims	CC (M3)
1	1	BBBP992R	0	B/Bar Back (Replace.End) 900/920		0.00
2	1	BU36F	L	Base Unit F/HT 300/600/870	300/600/870	0.09
3	1	PD56D3GR	0	PDU (3 Drawers) RH End 5/6/870	500/600/870	0.16
4	1	BBU6592R	0	Base Blender(Rep.End Match) 920/650		0.00
5	1	BBU6592R	0	Base Blender(Rep.End Match) 920/650		0.00
6	1	BU36F	L	Base Unit F/HT 300/600/870	300/600/870	0.09
7	1	BBU6592R	0	Base Blender(Rep.End Match) 920/650		0.00
8	1	BLU7523R	0	Tall Blender(Replace.End) 2400/750		0.00
9	1	OH6618E	R	Sgl Oven Hsg Unit(18E) 600/600/2100	600/600/2100	0.28
10	1	BLU7523R	0	Tall Blender(Replace.End) 2400/750		0.00
11	1	WU372P	L	Wall Unit 300/330/724	300/300/724	0.06
12	1	WU872P	0	Wall Unit 800/330/724	800/300/724	0.16
13	1	WU672PGR	R	Wall Unit RH End 600/330/724	600/300/724	0.12
	1	FRONTPNL72	0	Frontal Match Filler Panel		0.00
	1	RPXKITM22	0	ROPOX Manual 2.2m Kit		0.00

Worktops

Plan No.	Qty.	Code	Hdg	Description	Dims
	1	PV40	0	PVC Edged Worktop 40mm	1200/650
	1	PV40	0	PVC Edged Worktop 40mm	2260/637
	1	PV40	0	PVC Edged Worktop 40mm	2400/650
	1	TOPSEALBOLT	0	Topseal Easibolt Pack	

Sinks

Plan No.	Qty.	Code	Hdg	Description	Dims
	1	EL860NCWKSP	0	LEISURE Euroline 860x435 + Sink Pad	

Taps

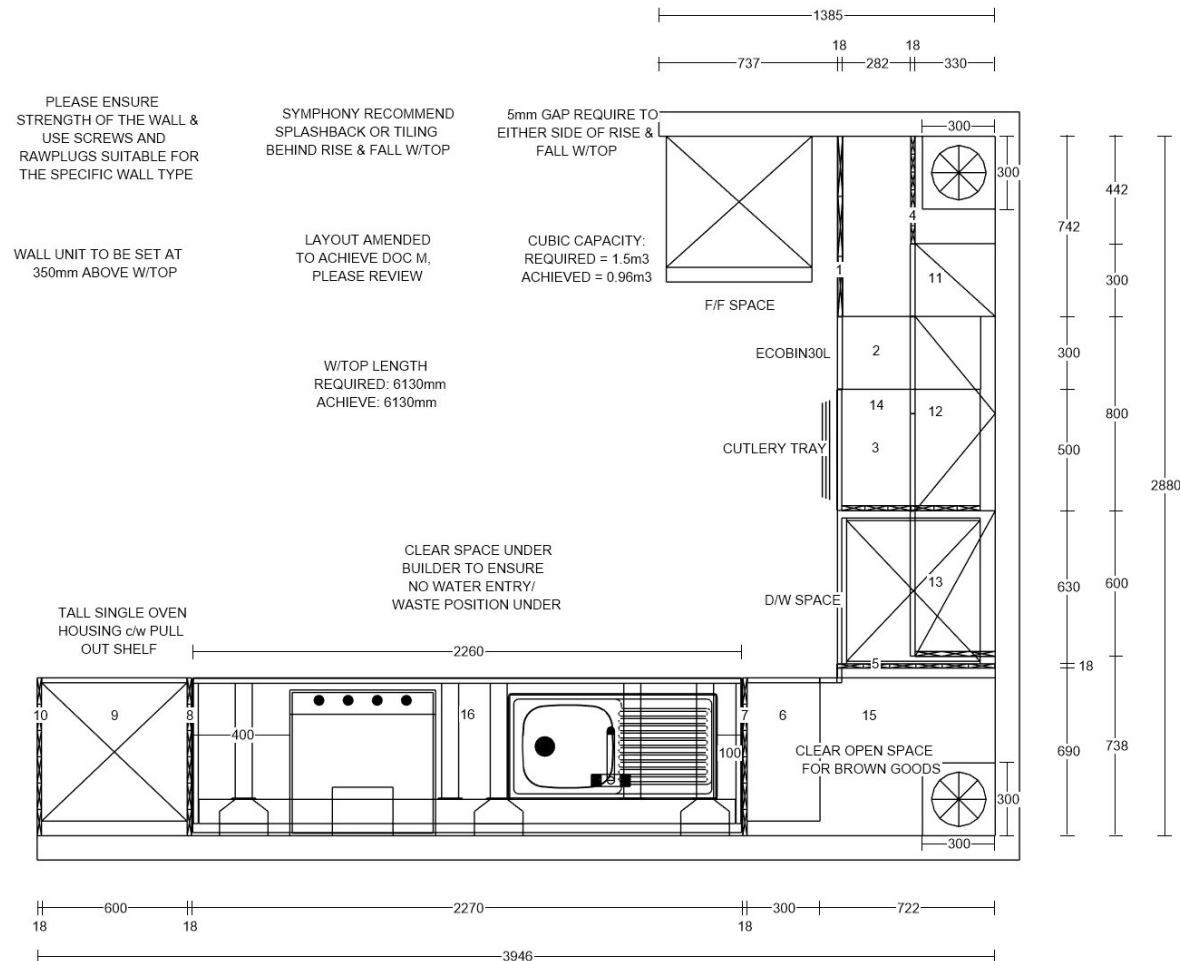
Plan No.	Qty.	Code	Hdg	Description	Dims
	1	44320TPK	0	Insinkerator HC3300C Hot/Cold Tap	

Accessories

Plan No.	Qty.	Code	Hdg	Description	Dims
	1	APPENVELOPE	0	Appliance Pack Envelope	2nd
	1	CTRAYVSTD5	0	Standard Cutlery Tray 500mm	
	1	DECPLINTH3AU	0	Plinth Aluminium 3000 Pk +Brackets	
	1	ECOBIN30L	0	300mm Ecobin (3 x 10L Containers)	
	1	RUNITPROT15	0	Proplex Protection Material 15x1.5m	
	2	SOFTCLOSE5	0	Soft Close Slide On 110'Hinge (x5)	
	1	VENTGRIDGR	0	Aeration Grid Grey 510/45/15	
	3	WTOPPROTECT	0	Corrugated Worktop Protect 2.4x1.2	

Appliances

Plan No.	Qty.	Code	Hdg	Description	Dims
	1	HI642CTT1	0	HOOVER 60CM INDUCTION HOB BLK	2nd
	1	HTS6CBK5XWIF	0	HOOVER 60CM T-SHAPE HOOD BLK S/S	2nd
	1	KOFGC40RX	0	ELECTROLUX Sgl.Right Side Open Oven	2nd



Plan

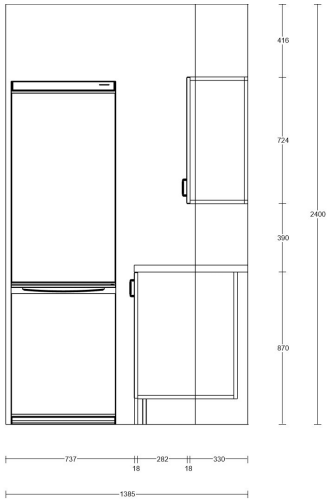
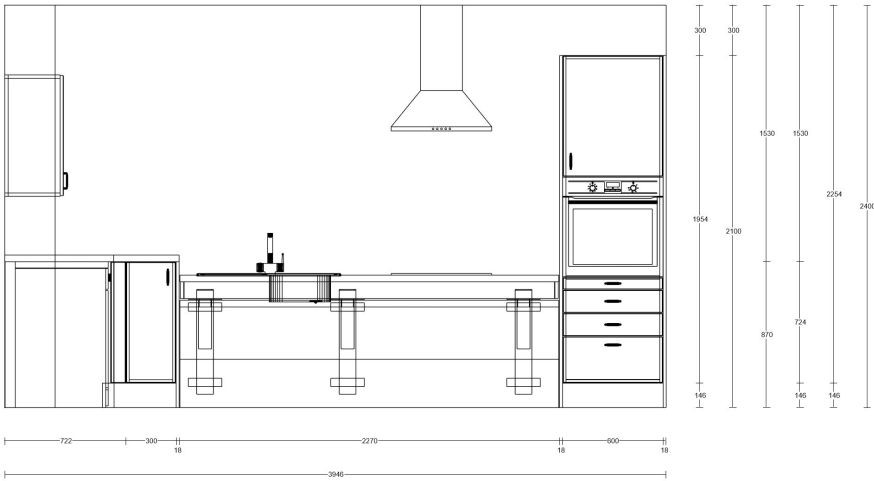
AT16 1B2P WC

Drawing No.: **297227_c**

Revision: **c**

Revision Date: **04/09/2024**

Any drawings are offered as a guide only for approval by our customer. No responsibility is accepted for their accuracy in relation to orders placed including for the fitting of our goods within the dimensions shown.



Elevations

AT16 1B2P WC

Drawing No.:
297227_c

Revision:**c**

Revision Date:
04/09/2024

Any drawings are offered as a guide only for approval by our customer. No responsibility is accepted for their accuracy in relation to orders placed including for the fitting of our goods within the dimensions shown.

Schedule & Cubic Capacity
AT17 1B2P WC

Drawing No. **297226_c**Revision: **c**Revision Date **04/09/2024**
Total cubic metres of storage: **1.28**

Main

Plan No.	Qty.	Code	Hdg	Description	Dims	CC (M3)
1	1	BLU7523R	0	Tall Blender(Replace.End) 2400/750		0.00
2	1	OH6618E	L	Sgl Oven Hsg Unit(18E) 600/600/2100	600/600/2100	0.28
3	1	BLU7523R	0	Tall Blender(Replace.End) 2400/750		0.00
4	1	PD66D3	0	Pan Drawer Unit (3 Drawers) 6/6/870	600/600/870	0.19
5	1	BBU6592R	0	Base Blender(Rep.End Match) 920/650		0.00
6	1	BBU6592R	0	Base Blender(Rep.End Match) 920/650		0.00
7	1	BU1506BAF	0	Base Unit F/HT (Basket) 150/600/870	150/600/870	0.04
8	1	BBU6592R	0	Base Blender(Rep.End Match) 920/650		0.00
9	1	BU66FGL	R	Base Unit F/HT LH End 600/600/870	600/600/870	0.20
10	1	BU46F	R	Base Unit F/HT 400/600/870	400/600/870	0.13
11	1	WU672PGR	L	Wall Unit RH End 600/330/724	600/300/724	0.12
12	1	WU672PGL	L	Wall Unit LH End 600/330/724	600/300/724	0.12
13	1	WU672P	R	Wall Unit 600/330/724	600/300/724	0.12
14	1	WU472P	R	Wall Unit 400/330/724	400/300/724	0.08
	1	BFF372	0	Frontal Match Base Filler Panel		0.00
	1	FRONTPNL72	0	Frontal Match Filler Panel		0.00
	1	RPXKITM22	0	ROPOX Manual 2.2m Kit		0.00
	1	WFF372	0	Frontal Match Wall Filler Panel		0.00

Worktops

Plan No.	Qty.	Code	Hdg	Description	Dims
	1	PV40	0	PVC Edged Worktop 40mm	1000/650
	1	PV40	0	PVC Edged Worktop 40mm	1900/650
	1	PV40	0	PVC Edged Worktop 40mm	2260/637
	1	PV40	0	PVC Edged Worktop 40mm	700/650
	1	TOPSEALBOLT	0	Topseal Easibolt Pack	

Sinks

Plan No.	Qty.	Code	Hdg	Description	Dims
	1	EL860NCWKSP	0	LEISURE Euroline 860x435 + Sink Pad	

Taps

Plan No.	Qty.	Code	Hdg	Description	Dims
	1	44320TPK	0	Insinkerator HC3300C Hot/Cold Tap	

Accessories

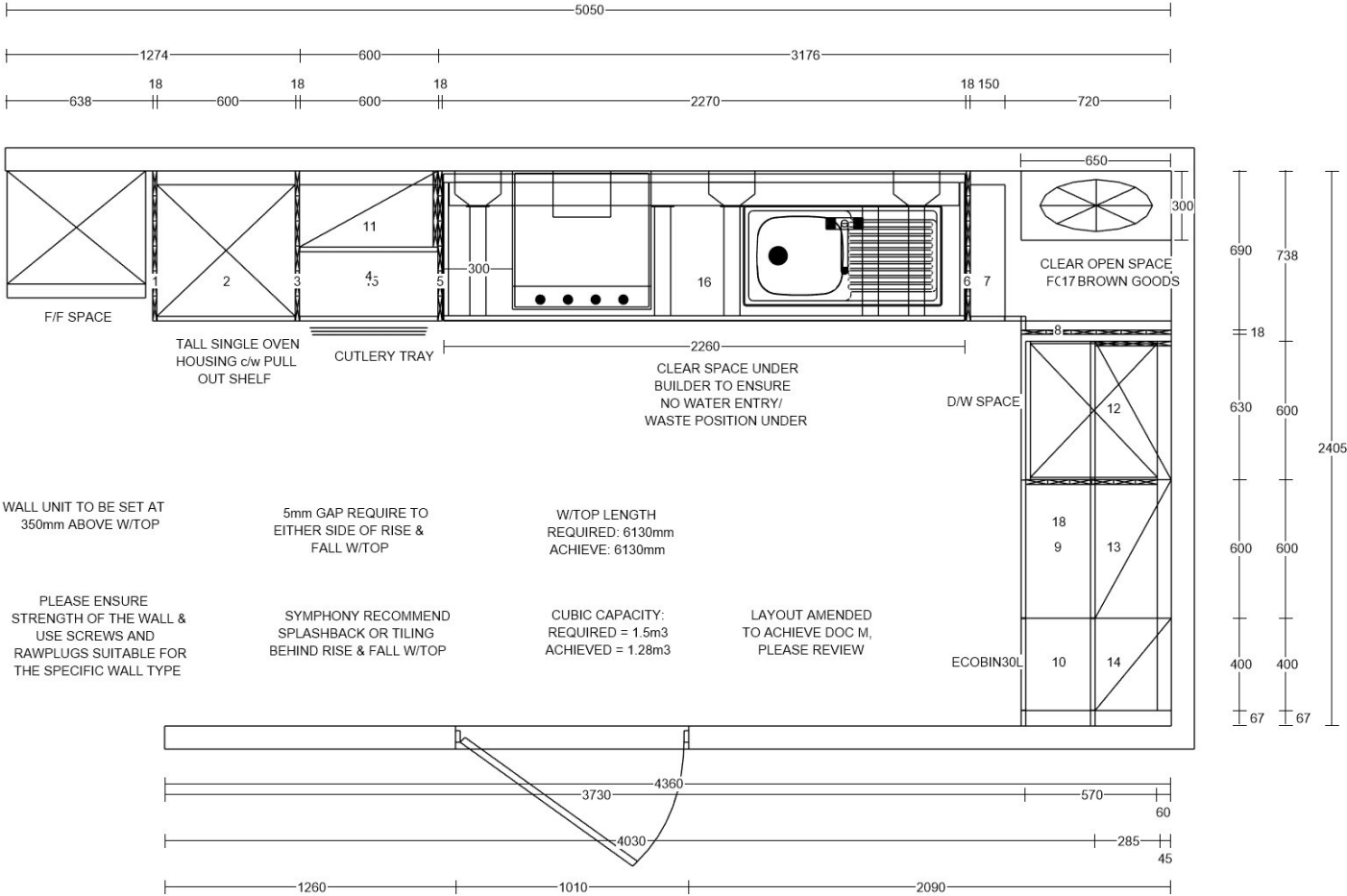
Plan No.	Qty.	Code	Hdg	Description	Dims
	1	APPENVELOPE	0	Appliance Pack Envelope	2nd
	1	CTRAYVSTD6	0	Standard Cutlery Tray 600mm	
	1	DECPLINTH3AU	0	Plinth Aluminium 3000 Pk +Brackets	
	1	ECOBIN30L	0	300mm Ecobin (3 x 10L Containers)	
	1	RUNITPROT15	0	Proplex Protection Material 15x1.5m	

Accessories - Continued

2	SOFTCLOSE5	0	Soft Close Slide On 110'Hinge (x5)
1	VENTGRIDGR	0	Aeration Grid Grey 510/45/15
3	WTOPPROTECT	0	Corrugated Worktop Protect 2.4x1.2

Appliances

Plan No.	Qty.	Code	Hdg	Description	Dims
	1	HI642CTT1	0	HOOVER 60CM INDUCTION HOB BLK	2nd
	1	HTS6CBK5XWIF	0	HOOVER 60CM T-SHAPE HOOD BLK S/S	2nd
	1	KOFGC40LX	0	ELECTROLUX Sgl.Left Side Open Oven	2nd



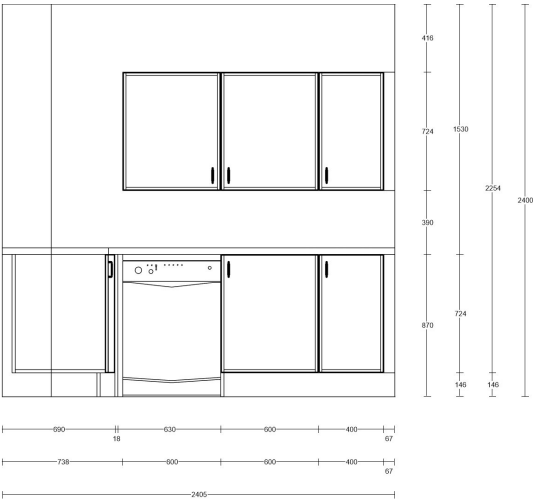
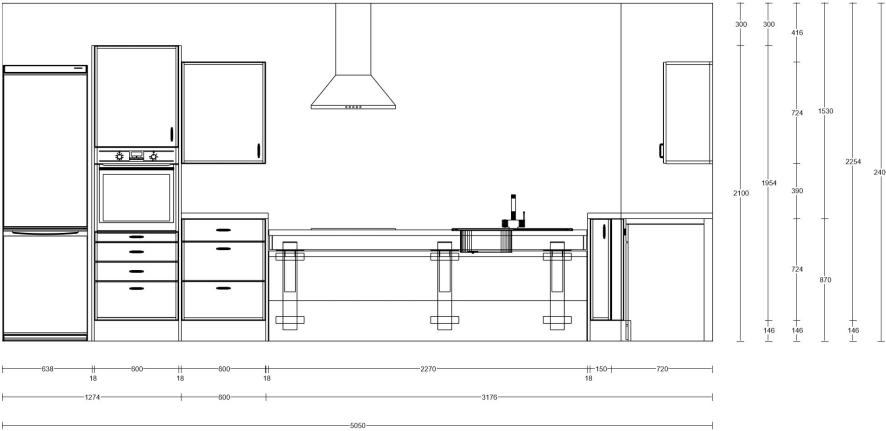
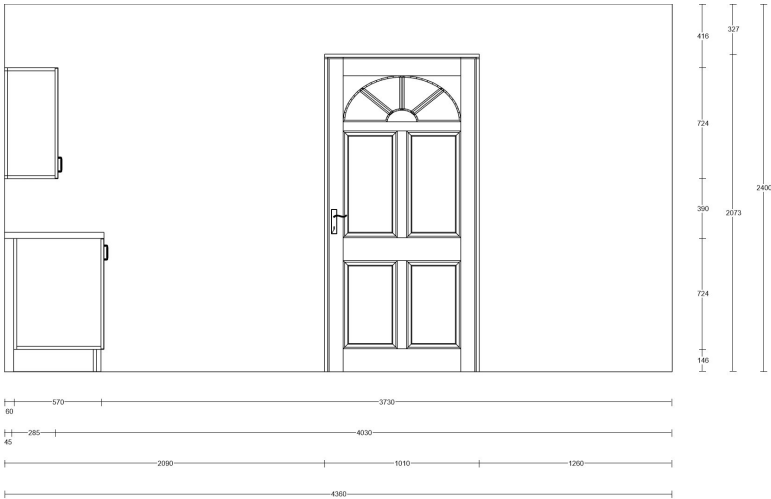
Plan
AT17 1B2P WC

Drawing No.: **297226_c**

Revision: **c**

Revision Date: **04/09/2024**

Any drawings are offered as a guide only for approval by our customer. No responsibility is accepted for their accuracy in relation to orders placed including for the fitting of our goods within the dimensions shown.



Elevations

**AT17 1B2P
WC**

Drawing No.:
297226_c

Revision:**c**

Revision Date:
04/09/2024

Any drawings are offered as a guide only for approval by our customer. No responsibility is accepted for their accuracy in relation to orders placed including for the fitting of our goods within the dimensions shown.

Schedule & Cubic Capacity
AT18 1B2P WC

Drawing No. **297225_c**Revision: **c**Revision Date **04/09/2024**
Total cubic metres of storage: **1.39**

Main

Plan No.	Qty.	Code	Hdg	Description	Dims	CC (M3)
1	1	BBBP1292R	0	B/Bar Back (Replace.End) 1200/920		0.00
2	1	BBU6592R	0	Base Blender(Rep.End Match) 920/650		0.00
3	1	BU456F	L	Base Unit F/HT 450/600/870	450/600/870	0.14
4	1	CB96MAXFA	R	CBU F/HT C/Stone Maxx 900/600/870	900/600/870	0.29
5	1	PD66D3	0	Pan Drawer Unit (3 Drawers) 6/6/870	600/600/870	0.19
6	1	BBU6592R	0	Base Blender(Rep.End Match) 920/650		0.00
7	1	BBU6592R	0	Base Blender(Rep.End Match) 920/650		0.00
8	1	BU1506BAF	0	Base Unit F/HT (Basket) 150/600/870	150/600/870	0.04
9	1	BBU6592R	0	Base Blender(Rep.End Match) 920/650		0.00
10	1	BBU6592R	0	Base Blender(Rep.End Match) 920/650		0.00
11	1	BLU7523R	0	Tall Blender(Replace.End) 2400/750		0.00
12	1	OH6618E	R	Sgl Oven Hsg Unit(18E) 600/600/2100	600/600/2100	0.28
13	1	BLU7523R	0	Tall Blender(Replace.End) 2400/750		0.00
14	1	WU672PGL	L	Wall Unit LH End 600/330/724	600/300/724	0.12
15	1	WU672PGR	L	Wall Unit RH End 600/330/724	600/300/724	0.12
16	1	WU1072P	0	Wall Unit 1000/330/724	1000/300/724	0.21
	1	FRONTPNL72	0	Frontal Match Filler Panel		0.00
	1	RPXKITM22	0	ROPOX Manual 2.2m Kit		0.00

Worktops

Plan No.	Qty.	Code	Hdg	Description	Dims
	1	DV40	0	Double PVC Edges W/Top 40mm	1700/665
	1	PV40	0	PVC Edged Worktop 40mm	1100/650
	1	PV40	0	PVC Edged Worktop 40mm	2260/637
	1	PV40	0	PVC Edged Worktop 40mm	800/650
	1	PV40	0	PVC Edged Worktop 40mm	900/650
	2	TOPSEALBOLT	0	Topseal Easibolt Pack	

Sinks

Plan No.	Qty.	Code	Hdg	Description	Dims
	1	EL860NCWKSP	0	LEISURE Euroline 860x435 + Sink Pad	

Taps

Plan No.	Qty.	Code	Hdg	Description	Dims
	1	44320TPK	0	Insinkerator HC3300C Hot/Cold Tap	

Accessories

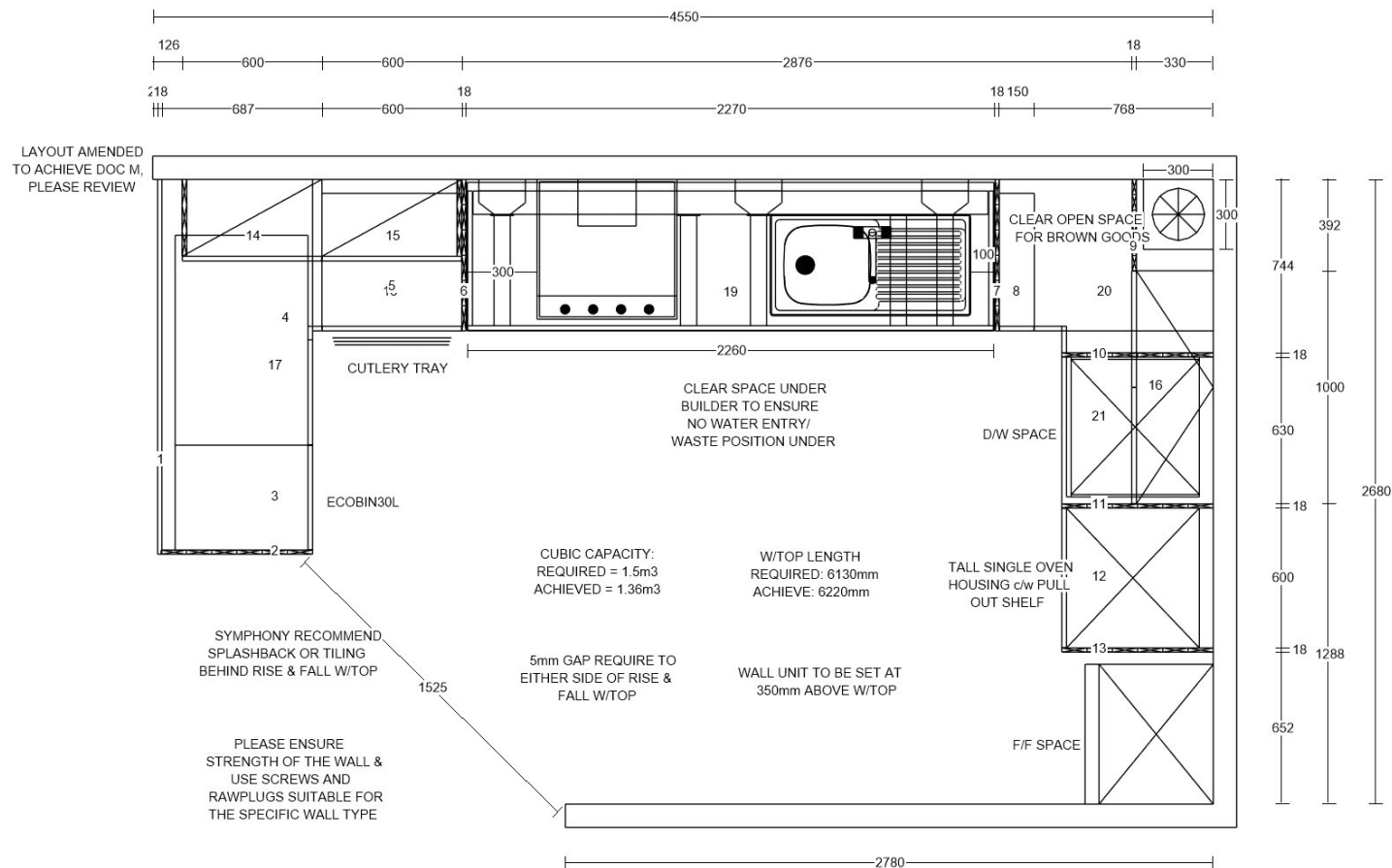
Plan No.	Qty.	Code	Hdg	Description	Dims
	1	APPENVELOPE	0	Appliance Pack Envelope	2nd
	1	CTRAYVSTD6	0	Standard Cutlery Tray 600mm	
	2	DECPLINTH3AU	0	Plinth Aluminium 3000 Pk +Brackets	
	1	ECOBIN30L	0	300mm Ecobin (3 x 10L Containers)	

Accessories - Continued

	1	RUNITPROT15	0	Proplex Protection Material 15x1.5m
	2	SOFTCLOSE5	0	Soft Close Slide On 110'Hinge (x5)
	1	VENTGRIDGR	0	Aeration Grid Grey 510/45/15
	3	WTOPPROTECT	0	Corrugated Worktop Protect 2.4x1.2

Appliances

Plan No.	Qty.	Code	Hdg	Description	Dims
	1	HI642CTT1	0	HOOVER 60CM INDUCTION HOB BLK	2nd
	1	HTS6CBK5XWIF	0	HOOVER 60CM T-SHAPE HOOD BLK S/S	2nd
	1	KOFGC40RX	0	ELECTROLUX Sgl.Right Side Open Oven	2nd



Plan

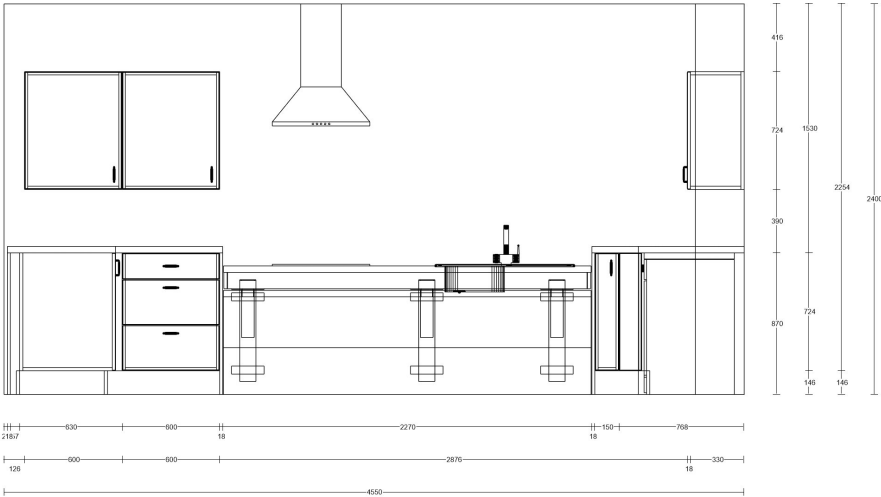
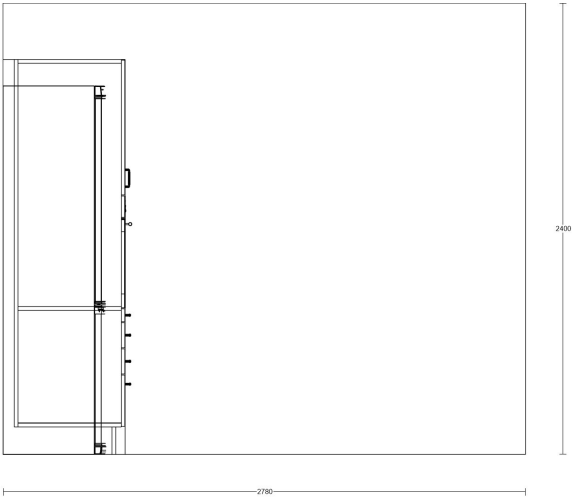
AT18 1B2P WC

Drawing No.: **297225_c**

Revision: **c**

Revision Date: **04/09/2024**

Any drawings are offered as a guide only for approval by our customer. No responsibility is accepted for their accuracy in relation to orders placed including for the fitting of our goods within the dimensions shown.



Elevations

AT18 1B2P WC

Drawing No.:
297225_c

Revision:**c**

Revision Date:
04/09/2024

Any drawings are offered as a guide only for approval by our customer. No responsibility is accepted for their accuracy in relation to orders placed including for the fitting of our goods within the dimensions shown.

Schedule & Cubic Capacity
AT19 1B2P WC

Drawing No. **297224_b**Revision: **b**Revision Date **04/09/2024**
Total cubic metres of storage: **1.53**

Main

Plan No.	Qty.	Code	Hdg	Description	Dims	CC (M3)
1	1	BBBP1892R	0	B/Bar Back (Replace.End) 1800/920		0.00
2	1	BBU6592R	0	Base Blender(Rep.End Match) 920/650		0.00
3	1	BU1506BAF	0	Base Unit F/HT (Basket) 150/600/870	150/600/870	0.04
4	1	BLU7523R	0	Tall Blender(Replace.End) 2400/750		0.00
5	1	OH6618E	R	Sgl Oven Hsg Unit(18E) 600/600/2100	600/600/2100	0.28
6	1	BLU7523R	0	Tall Blender(Replace.End) 2400/750		0.00
7	1	BLU7523R	0	Tall Blender(Replace.End) 2400/750		0.00
8	1	LU56IDAK	R	Larder Unit (5 Int.Draws) 5/6/2100	500/600/2100	0.44
9	1	BLU7523R	0	Tall Blender(Replace.End) 2400/750		0.00
10	1	BBU6592R	0	Base Blender(Rep.End Match) 920/650		0.00
11	1	BU126F	0	Base Unit F/HT 1200/600/870	1200/600/870	0.41
12	1	BBU6592R	0	Base Blender(Rep.End Match) 920/650		0.00
13	1	BBU6592R	0	Base Blender(Rep.End Match) 920/650		0.00
14	1	BBBP1892R	0	B/Bar Back (Replace.End) 1800/920		0.00
15	1	WU672PGL	L	Wall Unit LH End 600/330/724	600/300/724	0.12
16	1	WU672PGR	R	Wall Unit RH End 600/330/724	600/300/724	0.12
17	1	WU672PGR	L	Wall Unit RH End 600/330/724	600/300/724	0.12
	1	FAAH241	0	Fascia Panel 2400x115		0.00
	1	FAAH241	0	Fascia Panel 2400x115		0.00
	1	FRONTPNL72	0	Frontal Match Filler Panel		0.00
	1	WFF372	0	Frontal Match Wall Filler Panel		0.00

Worktops

Plan No.	Qty.	Code	Hdg	Description	Dims
	1	PV40	0	PVC Edged Worktop 40mm	1300/600
	1	PV40	0	PVC Edged Worktop 40mm	1300/650
	1	PV40	0	PVC Edged Worktop 40mm	2000/650
	1	PV40	0	PVC Edged Worktop 40mm	400/650
	1	PV40	0	PVC Edged Worktop 40mm	800/650
	1	PV40	0	PVC Edged Worktop 40mm	800/650
	2	TOPSEALBOLT	0	Topseal Easibolt Pack	

Sinks

Plan No.	Qty.	Code	Hdg	Description	Dims
	1	EL860NCWKSP	0	LEISURE Euroline 860x435 + Sink Pad	

Taps

Plan No.	Qty.	Code	Hdg	Description	Dims
	1	44320TPK	0	Insinkerator HC3300C Hot/Cold Tap	

Accessories

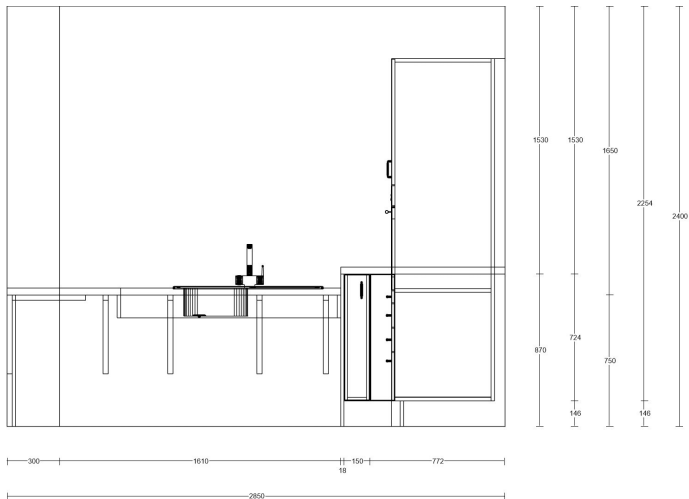
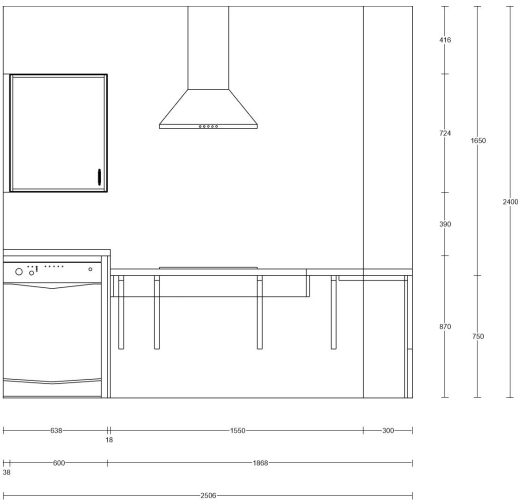
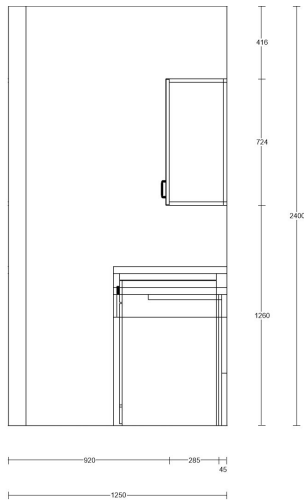
Plan No.	Qty.	Code	Hdg	Description	Dims
	1	APPENVELOPE	0	Appliance Pack Envelope	2nd
	8	BRKTWTOPDIS	0	'L' Shape Worktop Bracket	
	1	CTRAYVSTD6	0	Standard Cutlery Tray 600mm	
	1	DECPLINTH3AU	0	Plinth Aluminium 3000 Pk +Brackets	
	4	DSPLT	0	Unit Wall Support Plate	
	1	ECOBIN30L	0	300mm Ecobin (3 x 10L Containers)	
	1	IMOVE5H	0	I-MOVE 500mm Int.Pull Down Dbl.Tier	
	2	RUNITPROTECT	0	Kitchen Protect.Material 10m x 1.5m	
	2	SOFTCLOSE5	0	Soft Close Slide On 110'Hinge (x5)	
	1	VENTGRIDGR	0	Aeration Grid Grey 510/45/15	
	3	WTOPPROTECT	0	Corrugated Worktop Protect 2.4x1.2	

Appliances

Plan No.	Qty.	Code	Hdg	Description	Dims
	1	HI642CTT1	0	HOOVER 60CM INDUCTION HOB BLK	2nd
	1	HTS6CBK5XWIF	0	HOOVER 60CM T-SHAPE HOOD BLK S/S	2nd
	1	KOFGC40RX	0	ELECTROLUX Sgl.Right Side Open Oven	2nd



Any drawings are offered as a guide only for approval by our customer. No responsibility is accepted for their accuracy in relation to orders placed including for the fitting of our goods within the dimensions shown.



Elevations

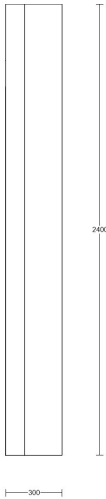
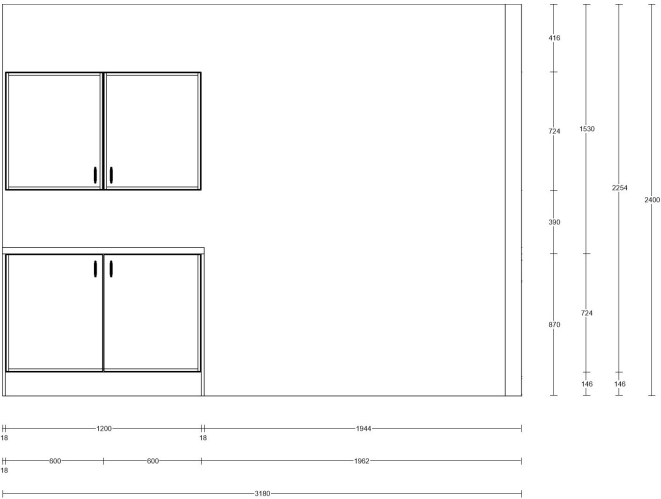
AT19 1B2P WC

Drawing No.:
297224_b

Revision:**b**

Revision Date:
04/09/2024

Any drawings are offered as a guide only for approval by our customer. No responsibility is accepted for their accuracy in relation to orders placed including for the fitting of our goods within the dimensions shown.



Elevations
AT19 1B2P
WC

Drawing No.:
297224_b

Revision:**b**

Revision Date:
04/09/2024

Any drawings are offered as a guide only for approval by our customer. No responsibility is accepted for their accuracy in relation to orders placed including for the fitting of our goods within the dimensions shown.

Schedule & Cubic Capacity
COMMUNAL AREA

Drawing No. **338988_d**Revision: **d**Revision Date **04/09/2024**
Total cubic metres of storage: **0.44**

Main

Plan No.	Qty.	Code	Hdg	Description	Dims	CC (M3)
1	1	BLU7523R	0	Tall Blender(Replace.End) 2400/750		0.00
2	1	OH6618D	L	Sgl Oven Hsg Unit(18D) 600/600/2100	600/600/2100	0.28
3	1	BLU7523R	0	Tall Blender(Replace.End) 2400/750		0.00
4	1	BBBP1892R	0	B/Bar Back (Replace.End) 1800/920		0.00
5	1	BBU6592R	0	Base Blender(Rep.End Match) 920/650		0.00
6	1	BBBP992R	0	B/Bar Back (Replace.End) 900/920		0.00
7	1	BBU6592C	0	Base Blender(Carcase Match) 920/650		0.00
8	1	DRDW4ASS	0	Integ. Dishwasher Door 600/720		0.00
9	1	BU56F	R	Base Unit F/HT 500/600/870	500/600/870	0.16
10	1	BBU6592R	0	Base Blender(Rep.End Match) 920/650		0.00
	1	FAAH241	0	Fascia Panel 2400x115		0.00
	1	FAAH241	0	Fascia Panel 2400x115		0.00

Worktops

Plan No.	Qty.	Code	Hdg	Description	Dims
	1	EDGSTRI45	0	4.5m PVC Edging Tape 43-45MM	
	1	PV40	0	PVC Edged Worktop 40mm	2000/650
	1	PV40	0	PVC Edged Worktop 40mm	2500/650

Sinks

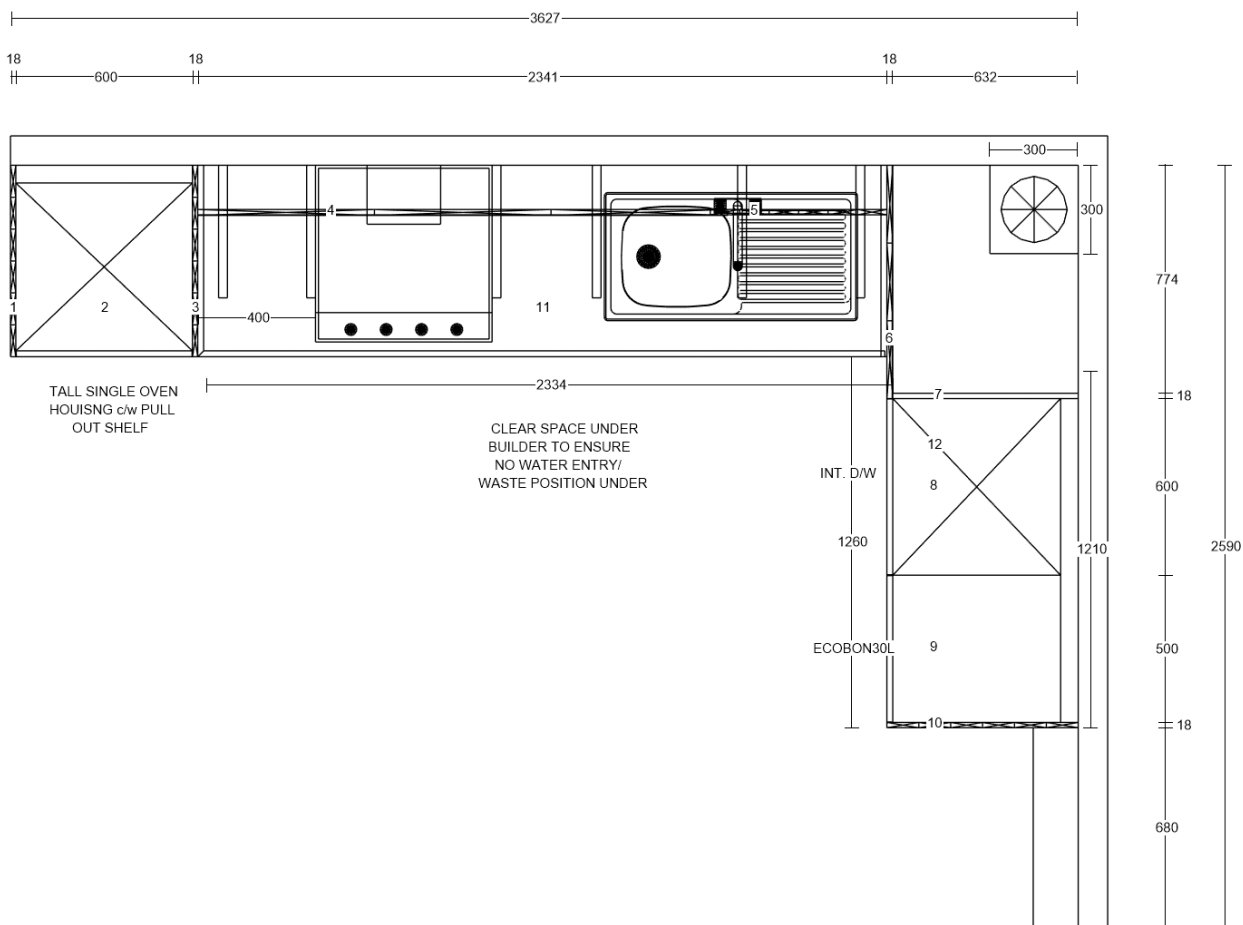
Plan No.	Qty.	Code	Hdg	Description	Dims
	1	EL860NCWKSP	0	LEISURE Euroline 860x435 + Sink Pad	

Accessories

Plan No.	Qty.	Code	Hdg	Description	Dims
	1	APPENVELOPE	0	Appliance Pack Envelope	2nd
	6	BRKTWTOPDIS	0	'L' Shape Worktop Bracket	
	1	DECPLINTH3AU	0	Plinth Aluminium 3000 Pk +Brackets	
	3	DSPLT	0	Unit Wall Support Plate	
	1	ECOBIN30L	0	300mm Ecobin (3 x 10L Containers)	
	1	RUNITPROTECT	0	Kitchen Protect.Material 10m x 1.5m	
	1	SOFTCLOSE5	0	Soft Close Slide On 110'Hinge (x5)	
	1	STRIPALS40PV	0	Aluminium End Cap 3mmR 38MM 650(PVC	
	1	VENTGRIDGR	0	Aeration Grid Grey 510/45/15	
	2	WTOPPROTECT	0	Corrugated Worktop Protect 2.4x1.2	

Appliances

Plan No.	Qty.	Code	Hdg	Description	Dims
	1	HI642CTT1	0	HOOVER 60CM INDUCTION HOB BLK	2nd
	1	HI6C3DOFB	0	HOOVER 60cm Dishwasher-Black	2nd
	1	HTS6CBK5XWIF	0	HOOVER 60CM T-SHAPE HOOD BLK S/S	2nd
	1	KOFGC40LX	0	ELECTROLUX Sgl.Left Side Open Oven	2nd



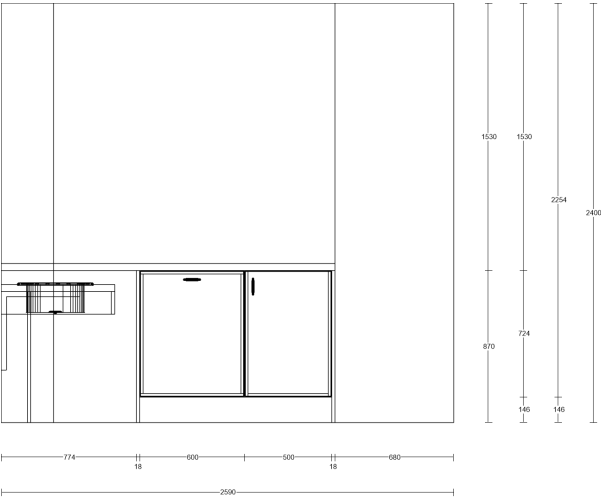
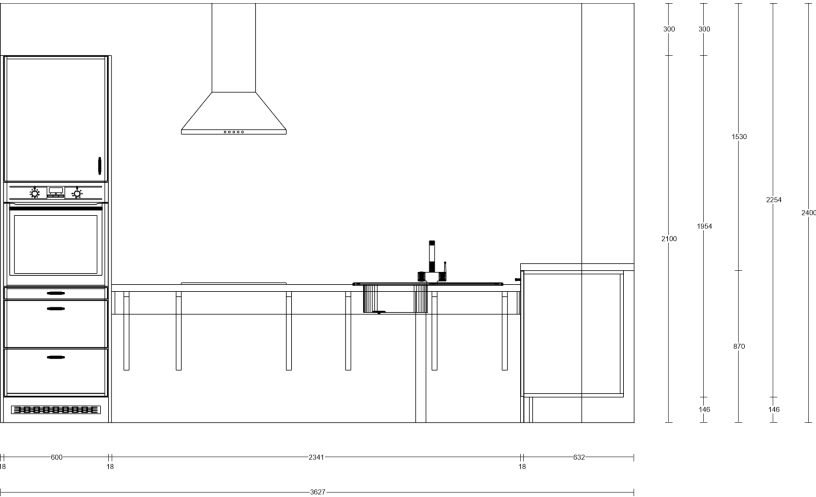
Plan COMMUNAL AREA

Drawing No.: **338988_d**

Revision: **d**

Revision Date: **04/09/2024**

Any drawings are offered as a guide only for approval by our customer. No responsibility is accepted for their accuracy in relation to orders placed including for the fitting of our goods within the dimensions shown.



Elevations
COMMUNAL
AREA

Drawing No.:
338988_d

Revision:**d**

Revision Date:
04/09/2024

Any drawings are offered as a guide only for approval by our customer. No responsibility is accepted for their accuracy in relation to orders placed including for the fitting of our goods within the dimensions shown.