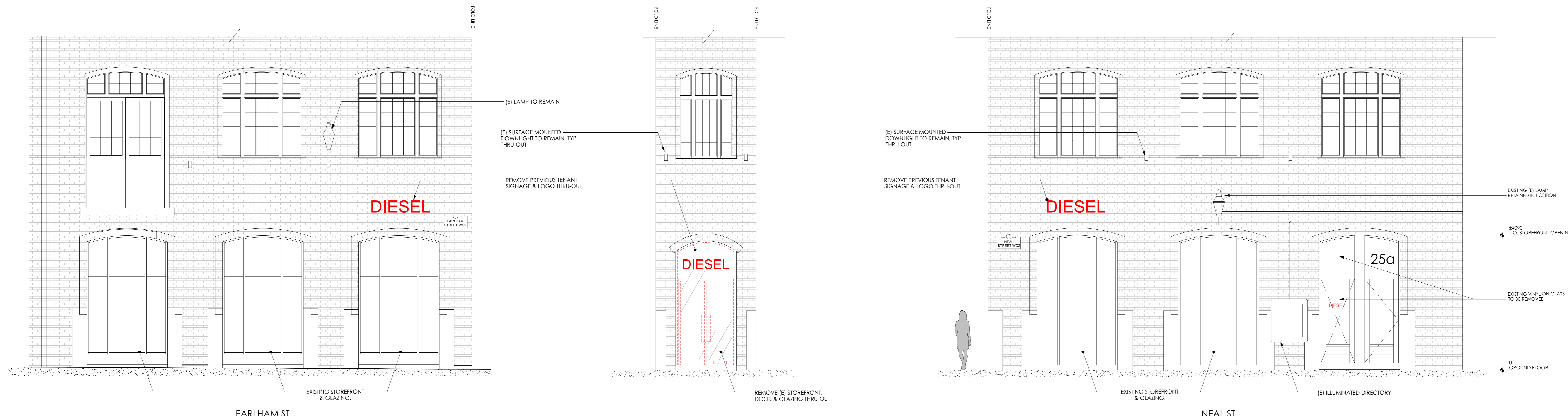
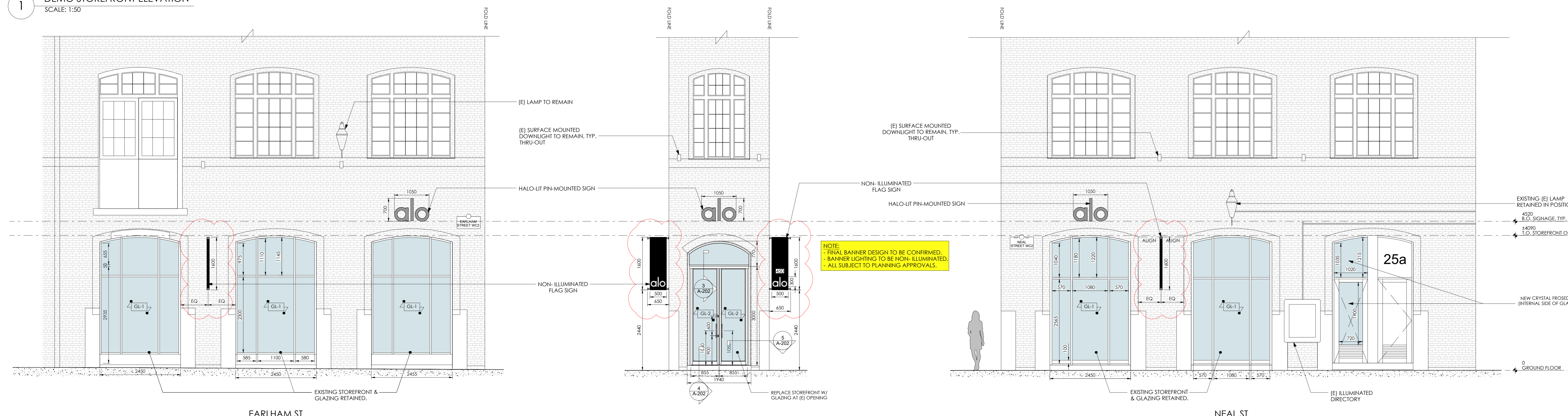


Written dimensions on these drawings shall take precedence over scaled dimensions. Contractors shall verify and be responsible for all dimensions and conditions on the project and this office must be notified of any variations from the dimensions and conditions shown by these drawings prior to commencement of any work. All contractors are deemed to have made themselves aware of site conditions prior to entering into any contract. Shopfitting details must be submitted to this office for approval before proceeding with fabrication. This drawing is the property of rpa. Copyright is reserved by them and the drawing is issued on condition that it is not copied, reproduced, retained or disclosed to any unauthorised person, either wholly or in part without the consent in writing of rpa.

NOTE:
 This drawing was created using details from:
 rpa survey 08-02-2024
 LMA dwg -
 20240329-Alo-Covent
 Garden-DD Set - LMA

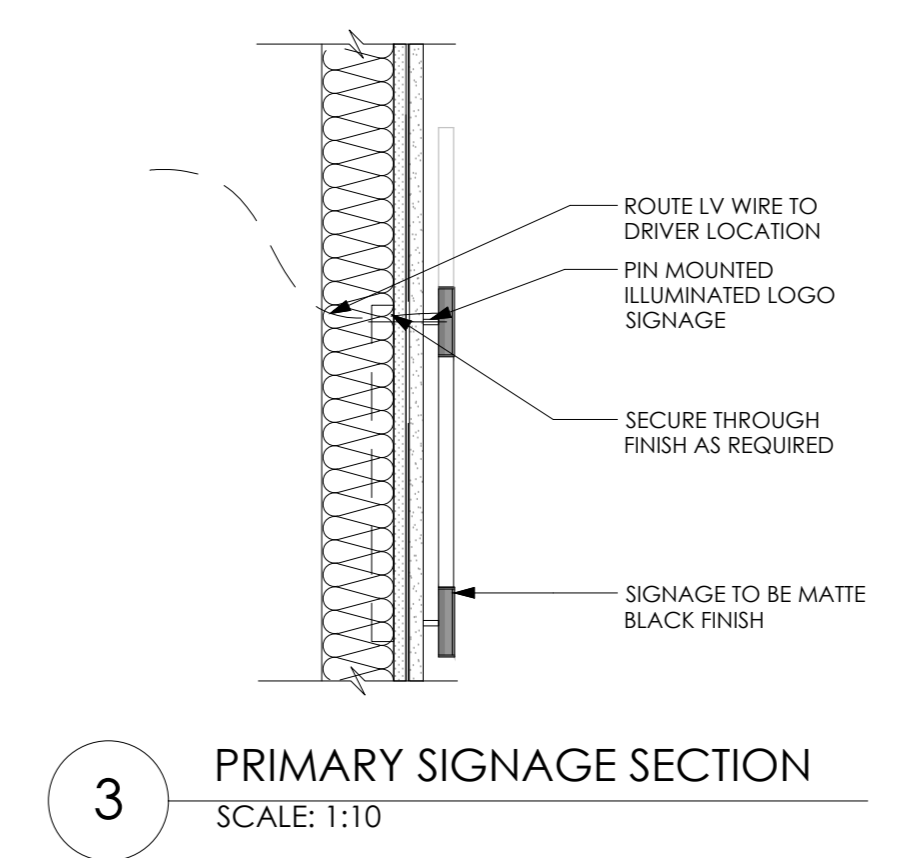


1 DEMO STOREFRONT ELEVATION
 SCALE: 1:50



2 PROPOSED STOREFRONT ELEVATION
 SCALE: 1:50

RISK ASSESSMENT SUMMARY (RAS)				
DATE	BY	ELEMENT OF DESIGN	RESIDUAL RISK	ACTION - INFORMATION TO REDUCE RISK
May24	PC	Floor Chasing	Chasing over existing services	Contractor to check with 'cat' detector prior to commencement of any works.
May24	PC	Over-head working to rafts/ceilings	Contractor falling/objects falling	Contractor to complete high-level work prior to installation of any new cabinets and to use suitable equipment & trained staff
May24	PC	Asbestos	Disturbing asbestos maybe a health risk.	Contractor to follow the risk assessment. Refer to any method statements for any works required. Wear PPE at all times.
May24	PC	Installation of signage at high level	Falling from height / injury due to falling objects	Contractor to use suitable access platform and complete method statement for works. wear ppe at all times.



3 PRIMARY SIGNAGE SECTION
 SCALE: 1:10

NEW STORE 2024 - FOR CONSTRUCTION

rev	date	description	drawn	chk
D	08.10.24	CONSTRUCTION ISSUE - ALO flag signs now indicated to be non-illuminated.		PC
C	16.08.24	CONSTRUCTION ISSUE - ALO logo sign at high level relocated in Earham Street elevation.		PC
B	16.08.24	CONSTRUCTION ISSUE - Banner sign note added. - Crystal frosted film note added.		PC
A	02.05.24	CONSTRUCTION ISSUE - Updated to latest comments.		PC
4	26.07.24	UPDATE ISSUE - Updated to latest comments.		PC
3	15.07.24	FOR COMMENT ISSUE - Transom rail added to display windows. - Latern retained in existing location. - Projecting signs replaced with flag signs.		PC TC
2	05.07.24	FOR COMMENT ISSUE - Lighting amended. - Smoke curtain spec added.		PC TC
1	14.06.24	FOR COMMENT ISSUE - Staircase updated		PC TC
-	14.05.24	TENDER ISSUE - Initial issue of drawing.		EF TC



COVENT GARDEN
 25 Neal Street
 London WC2H 9PR
 United Kingdom

drawing title
 SHOPFRONT ELEVATIONS
 Ground, Basement & First floor plans

drawn by	date	checked
TC	April 24'	TC
job no.	drawing no.	revision
2008122	A-201	D

scale 1:50 @ A0