

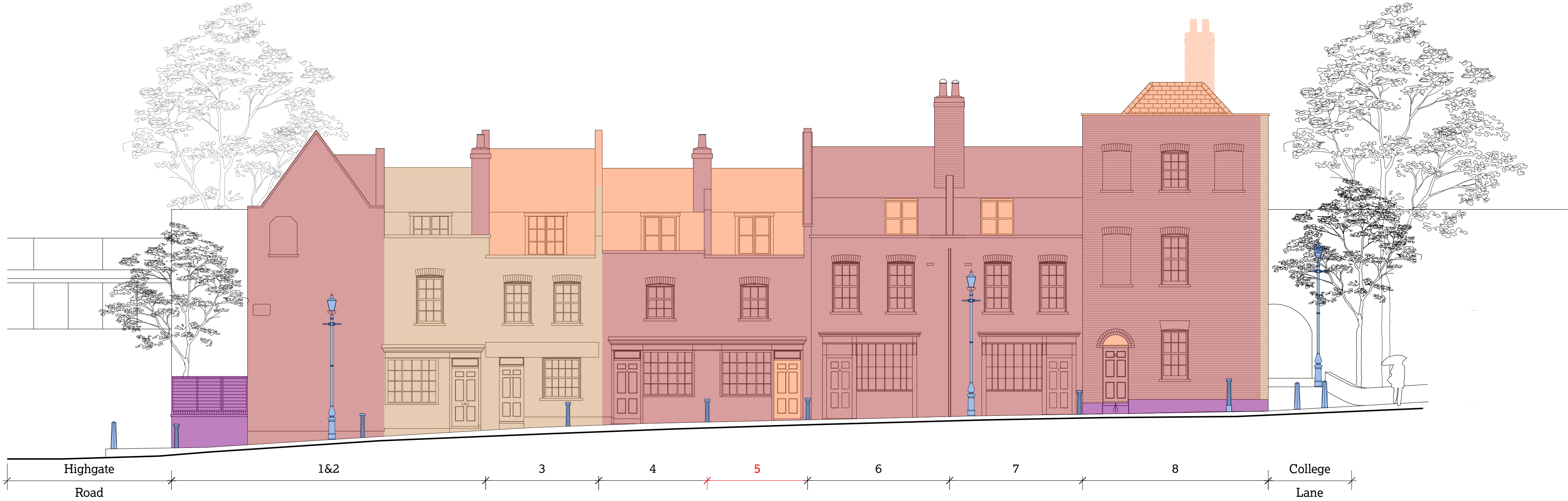
© 51% Studios Ltd. Reproduction in whole or in part is forbidden without written permission of 51% Studios Limited.

All dimensions are to be checked on site before any work proceeds. Do not scale this drawing but use only figured dimensions. Any errors or omissions are to be reported to 51%.

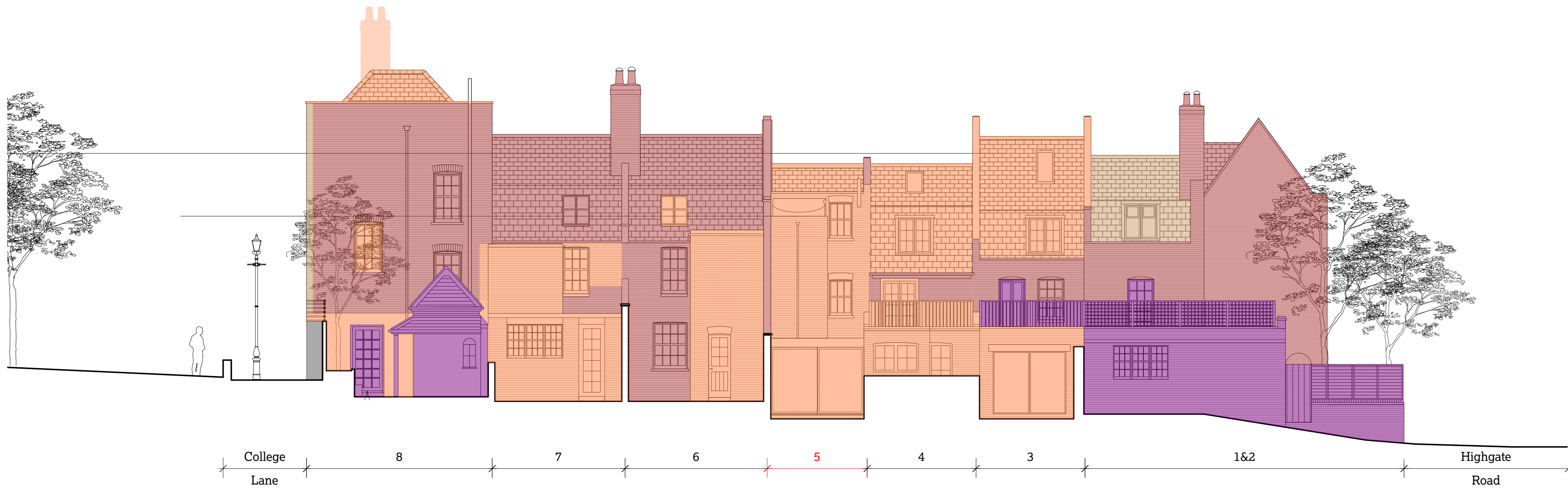
The Contractor shall submit full size drawings and specifications to 51% for approval, without which, manufacture shall not commence.

This drawing is to be read in conjunction with all the relevant consultants' and/or specialists' drawings/documents, and any discrepancies or variations are to be notified to 51% before work commences.

For further information please see other drawings and documents enclosed with this drawing. For information on Structure use Engineer's drawings. For further information on Services use Engineer's and/or Contractor's drawings.



1 Morphological Little Green Street elevation (north side)
1:100



2 Morphological Little Green Street rear elevations (northside)
1:100



51

5 Little Green Street,
London NW5 1BL

Gill Green
Project No. 1179

51% Studios
1A Cobham Mews, London NW1 9SB
+ 44 (0) 203 355 1205

For planning
RIBA Stage 3
**Morphological street
elevations**

Scale 1:100 @ A1 / 1:200 @ A3
Drawn by PT, Sept 2024

Issue Notes:

1002