



---

Middlesex Hospital Annexe Site  
44 Cleveland Street, W1T 4JU  
For and on behalf of University  
College London Hospitals Charity  
(UCLHC)

Bedford Passage Development  
Middlesex Annexe LLP

## Condition 26 Landscape New mixed use building

*Additional information submitted showing photographs of materials*



### Design team

Llewelyn Davies  
HLM Landscape  
Temple  
Aecom  
Arup  
Delva Patman Redlar

# Introduction

---

# Introduction



## Introduction

Middlesex Hospital Annex,  
44 Cleveland Street, London,  
W1T 4JT.

Applications by University College London Hospitals  
Charity.

Discharge of planning Condition 26 Landscape  
reference 2024/1099/P

## Condition 26

*The condition reads "Details of hard and soft landscaping (for the new building and Bedford Passage) and Bedford Passage to part discharge condition 26 and fully discharge condition 28 of planning permission 2021/3087/P allowed at appeal (APP/X5210/W/22/3300894) dated 01/12/2022 (which varied 2018/1584/P dated 30/09/2019 which varied 2017/0414/P dated 15/01/2018) for 'Refurbishment of the existing Workhouse and North and South Houses, part demolition of the South House and redevelopment of the remainder of the site.'*

The following additional information has been provided:

Landscape plans highlighting materials used,

Site photographs of sample materials on site,

Manufacturer specification & photos

We believe the additional information submitted within this report should be sufficient to discharge condition 26 planning reference 2024/1100/P.

# Paving Material

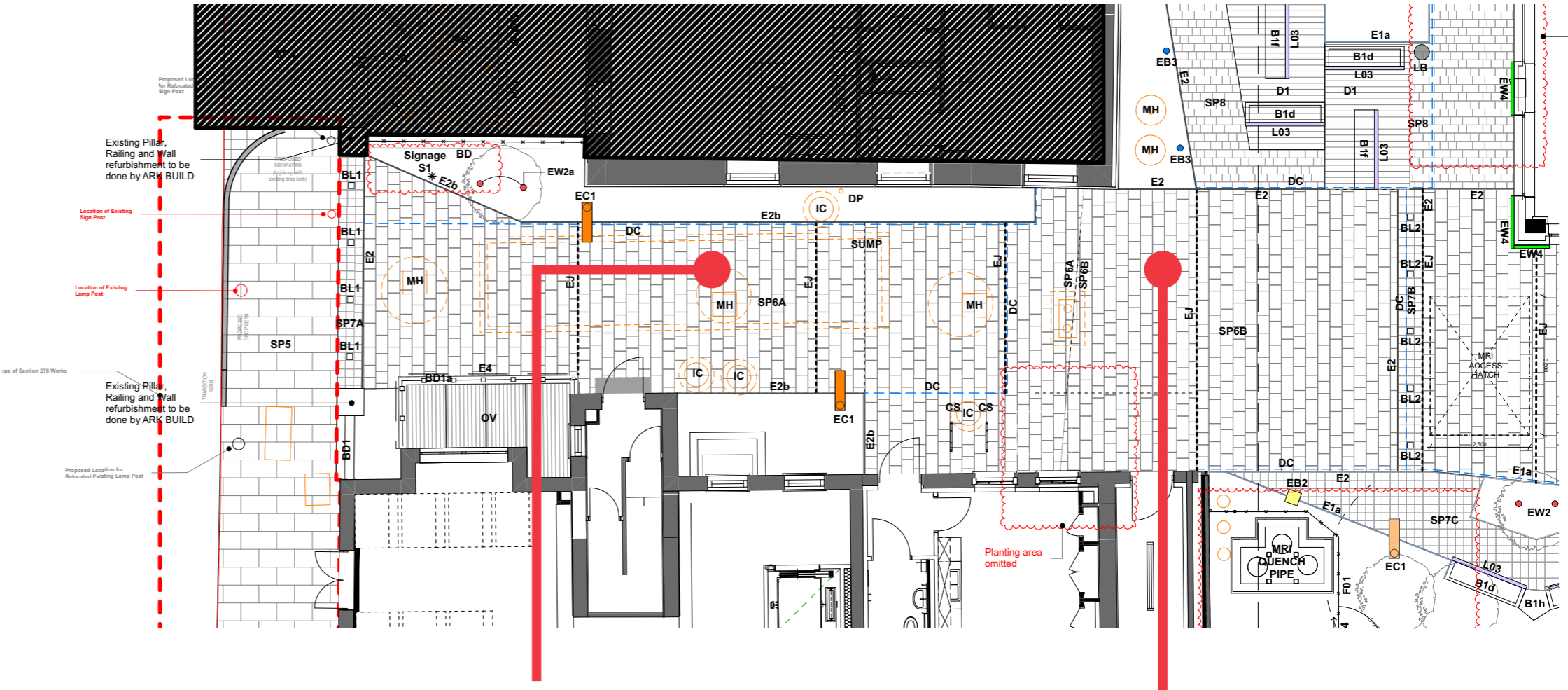
## Bedford Passage Entrance West (Cleveland Street)

### Bedford Passage Entrance West

SP6 Stone Paving Type 6 - Yorkstone Flag  
 Marshall Yorkstone Paving (50mm).  
 Laid on rigid bed system.  
 Scoutmoor Sandstone, 300 x random length  
 300-600mm

SP6A Vehicle loading (Fire Truck access)  
 SP6B Vehicle loading over podium

Sample colour show a blue grey to sandy brown colour. This varies in colour depending on sunlight and daylight, but provides a contrast of a light blue - grey colour in bright daylight and a warmer colour in summer evening sunlight.



SP6A - Stone colour sample  
 Setting out pattern as per sizes above & landscape paving drawings



SP6B - Stone colour sample (slope ramp view)  
 Setting out pattern as per sizes above & landscape paving drawings

# Paving Material



Landscape House, Premier Way,  
Lowfields Business Park,  
Elland, HX5 9HT  
Tel: 03704 112233  
T: 01422 312000  
E: [grouptechnicalservices@marshalls.co.uk](mailto:grouptechnicalservices@marshalls.co.uk)  
W: [www.marshalls.co.uk/commercial](http://www.marshalls.co.uk/commercial)  
Date Created: 04/09/24

## Scoutmoor Yorkstone



Diamond Wire Sawn



Capital Finish TBC



Flamed TBC

Scoutmoor Yorkstone is a blue-grey to brown-coloured stone popular in projects across the UK thanks to its impressive technical performance. The strongest type of Yorkstone available in the UK, it is perfect for paved applications thanks to its strength, durability and class-leading slip resistance. Suitable for pedestrian and trafficked areas, it's a reliable and hardwearing addition to any commercial or public space. As well as paving, Scoutmoor Yorkstone is suitable for setts, kerbs, tactile, steps, water management, specially shaped paving and low-level masonry veneers for planters and seats.

Textures include Diamond Wire Sawn, Capital finish, and Flamed textured. Fully tested to the appropriate standards and UKCA marked to the latest legislation, the Scoutmoor quarry and manufacturing works are accredited by ISO 9001, ISO 45001 and ISO 14001.  
\*Scoutmoor Flamed & Capital swatch finishes coming soon.

DESCRIPTION	
Appearance	Blue Grey to Brown fine grained Yorkstone
Manufacturing Process	Sawn
Geological Type	Millstone Grit series, Carboniferous sandstone and Westphalian A, lower coal measure sandstone.
Quarry Location	Appleton Quarry, Yorkshire & Whitworth Quarry, Lancashire
Governing Manufacturing Standards	All data where relevant to be established in accordance with BS EN 1341 : 2012, BS EN 1342 : 2012 & BS EN 1343 : 2012
Petrographical Description	Pale greenish grey fine grained sandstone
UKCA Marking/DOP	<a href="http://www.marshalls.co.uk/declarations">www.marshalls.co.uk/declarations</a>



Landscape House, Premier Way,  
Lowfields Business Park,  
Elland, HX5 9HT  
Tel: 03704 112233  
T: 01422 312000  
E: [grouptechnicalservices@marshalls.co.uk](mailto:grouptechnicalservices@marshalls.co.uk)  
W: [www.marshalls.co.uk/commercial](http://www.marshalls.co.uk/commercial)  
Date Created: 04/09/24

## Scoutmoor Yorkstone

PHYSICAL PROPERTIES	
Nominal Dimensions (mm)	Various sizes available
Abrasion Resistance (mm)	19.53 mm (Mean value to EN 14157 : 2017 (Hev = 19.8mm))
Durability (Freeze-thaw)	17.49 / 14.6 MPa (Mean values to EN 12371 : 2010)
Material Density	2389 kg/m <sup>3</sup> (Mean value to EN 1936 : 2006)
Open Porosity (%)	10.82% (Mean value to EN 1936 : 2006)
Slip Resistance (Dry)	Sawn 87   Capital 95   Flamed 81
Slip Resistance (Wet)	Sawn 86   Capital 77   Flamed 77
Transverse/Flexural Split/Breaking	23.39 MPa (Mean value to EN 12372:2006) (Lev = 17.49 MPa)
LRV Range	Sawn 33.64   Capital 30.10   Flamed 17.84
Surface Roughness (Rz - µm)	Sawn 53.04   Capital 134.28   Flamed 79.86
Compressive Strength (Mpa)	60.69 MPa (Mean value to EN 1926 : 2006 (Lev = 50.14 MPa))
Water Absorption (%)	2.31% (Mean value to EN 13755 : 2008 (Hev = 2.36%))

FURTHER INFORMATION	
Cleaning & Maintenance	Available on request
Contact Us	For technical information on the design, specification and construction when utilising the product, contact Group Technical Services on 0370 411 2233



# Paving Material

## Bedford Passage Square

Paving to Bedford Passage Square  
Area highlighted as SP8 Type

SP8 Stone Paving Type 8  
Marshall Yorkstone Paving (50mm).  
Laid on Rigid bed System.  
Pedestrian loading over podium with  
permavoid below.

Scoutmoor Sandstone, 200 x random length  
200-400mm

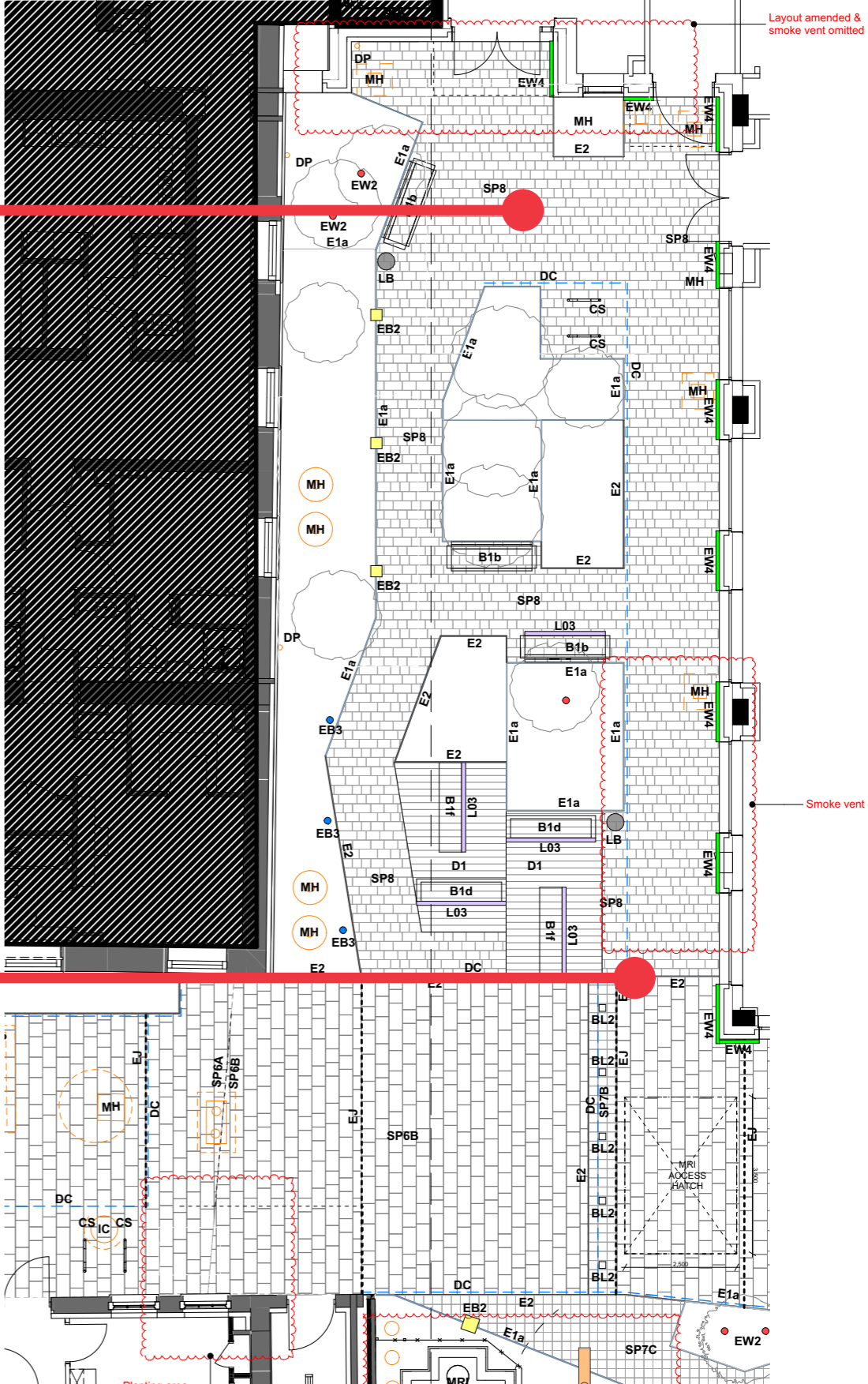
Same material as per SP6 with smaller  
size cut stone paving and orientation  
(see drawing opposite)



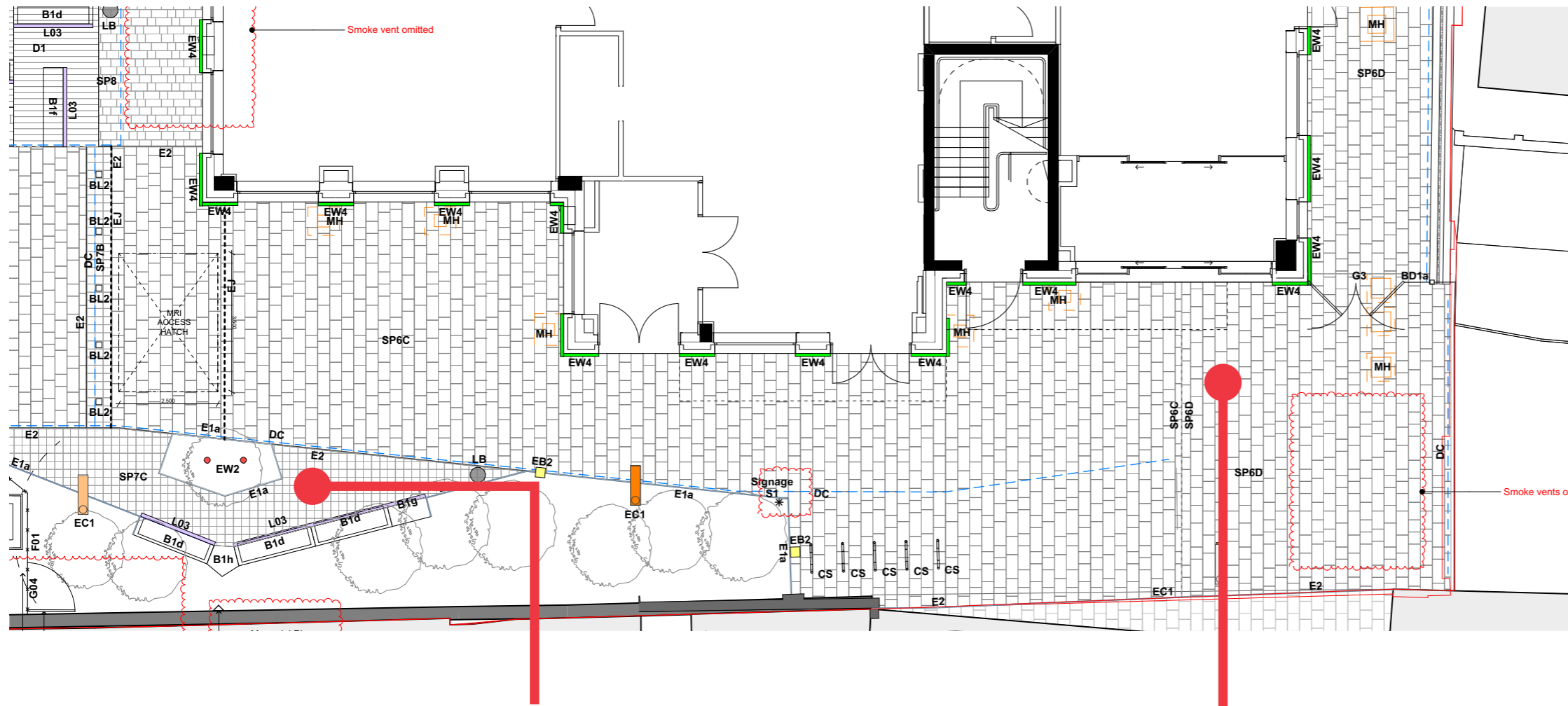
SP8 - Stone colour sample daylight & shadow view of stone.  
Setting out pattern as per sizes above & landscape paving drawings



SP8 - Stone colour sample - alternative setting out pattern  
Setting out pattern as per sizes above & landscape paving drawings



# Paving Material



## Bedford Passage Entrance East (Astor College)

### Bedford Passage Entrance East

SP6 Stone Paving Type 6 - Yorkstone Flag Marshall Yorkstone Paving (50mm). Laid on rigid bed system. Scoutmoor Sandstone, 300 x random length 300-600mm

SP6C Pedestrian loading over podium with permavoid

SP6D Pedestrian loading over podium

Sample colour show a blue grey to sandy brown colour. This varies in colour depending on sunlight and daylight, but provides a contrast of a light blue - grey colour in bright daylight and a warmer colour in summer evening sunlight.

Stone paving material, colour and size to match west entrance paving.

### Bedford Passage Centre South - Seating Area

A smaller size stone paver is used to this area to create a more intimate smaller scale space.

SP7 Stone Paving Type 7 - Yorkstone Flag Marshall Yorkstone Paving (50mm). Laid on rigid bed system. Scoutmoor Sandstone, 200 x 200mm

SP7C Pedestrian loading over podium with permavoid

Stone paving material and colour is used to match the Bedford Passage route. smaller size stone paver used.



SP7C - Stone colour sample  
Setting out pattern as per sizes above & landscape paving drawings



SP6C & SP6D - Stone colour sample  
Setting out pattern as per sizes above & landscape paving drawings

LLEWELYN  
DAVIES