



Middlesex Hospital Annexe Site  
44 Cleveland Street, W1T 4JU

For and on behalf of University  
College London Hospitals Charity  
(UCLHC)

Bedford Passage Development  
Middlesex Annexe LLP

## Condition 26 Landscape Existing Buildings

*Additional information submitted showing photographs of materials*



### Design team

Llewelyn Davies  
HLM Landscape  
Temple  
Aecom  
Arup  
Delva Patman Redlar

# Introduction

---

# Introduction



## Introduction

Middlesex Hospital Annex,  
44 Cleveland Street, London,  
W1T 4JT.

Applications by University College London Hospitals  
Charity.

Discharge of planning Condition 26 Landscape  
reference 2024/1100/P

## Condition 26

*The condition reads "Details of hard and soft landscaping (for the existing building) to part discharge condition 26 of planning permission 2021/3087/P allowed at appeal (APPX5210/W/22/3300894) dated 01/12/2022 (which varied 2018/1584/P dated 30/09/2019 which varied 2017/0414/P dated 15/01/2018) for 'Refurbishment of the existing Workhouse and North and South Houses, part demolition of the South House and redevelopment of the remainder of the site'".*

The following additional information has been provided:

Landscape plans highlighting materials used,

Site photographs of sample materials on site,

Manufacturer specification & photos

We believe the additional information submitted within this report should be sufficient to discharge condition 26 planning reference 2024/1100/P.



# Paving Material

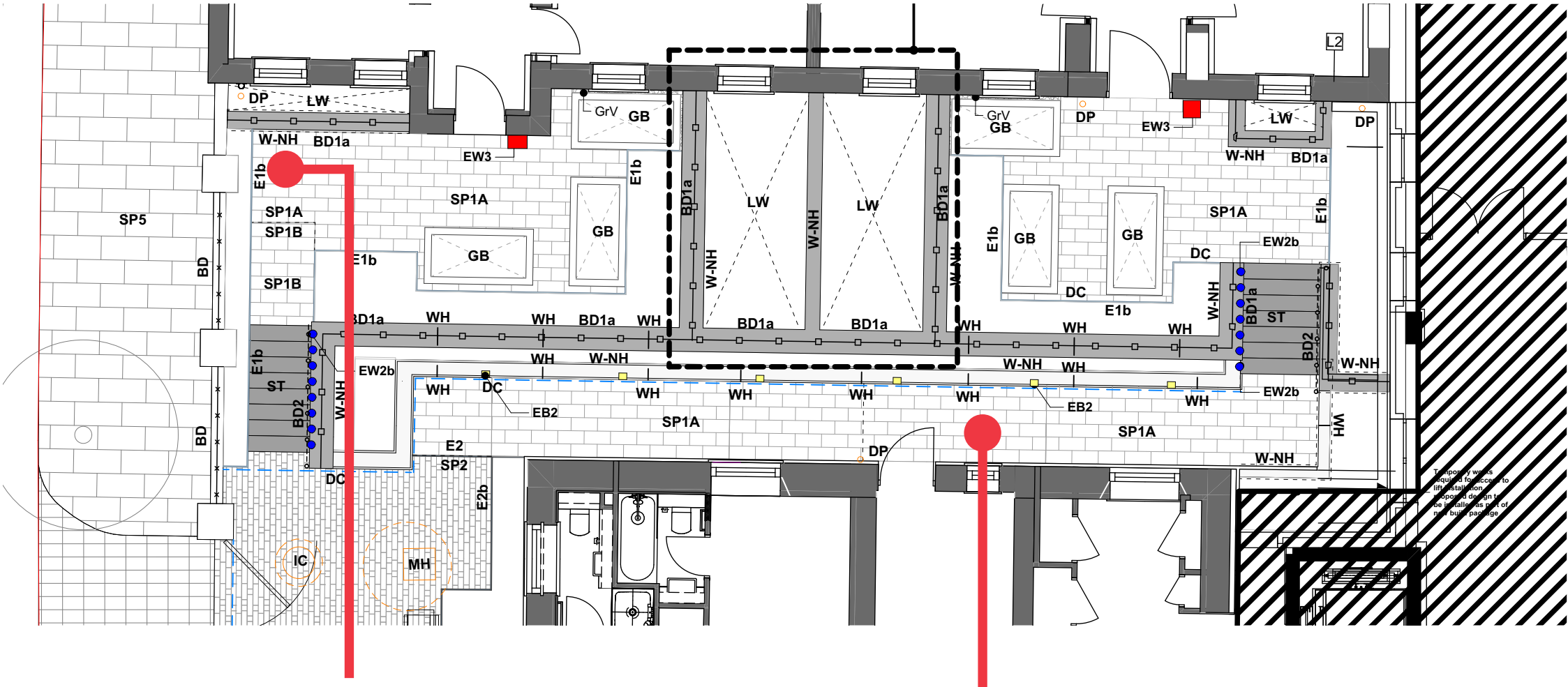
## North House Paving

North House M01 & M02 Private Terrace Gardens  
Area highlighted as SP1A

SP1 Stone Paving Type 1 - Yorkstone Flag  
Marshalls Yorkstone Flag Paving (50mm)  
Scoutmoor Sandstone, 200 x 600mm

SP1A Pedestrian loading over podium on pedestal

Sample colour show a blue grey to sandy brown colour. This varies in colour depending on sunlight and daylight, but provides a contrast of a light blue - grey colour in bright daylight and a warmer colour in summer evening sunlight.



Sample laid out on site next to boundary wall



Sample laid out on site next to workhouse plinth.

# Paving Material



Landscape House, Premier Way,  
Lowfields Business Park,  
Elland, HX5 9HT  
Tel: 03704 112233  
T: 01422 312000  
E: [grouptechnicalservices@marshalls.co.uk](mailto:grouptechnicalservices@marshalls.co.uk)  
W: [www.marshalls.co.uk/commercial](http://www.marshalls.co.uk/commercial)  
Date Created: 04/09/24

## Scoutmoor Yorkstone



Diamond Wire Sawn



Capital Finish TBC



Flamed TBC

Scoutmoor Yorkstone is a blue-grey to brown-coloured stone popular in projects across the UK thanks to its impressive technical performance. The strongest type of Yorkstone available in the UK, it is perfect for paved applications thanks to its strength, durability and class-leading slip resistance. Suitable for pedestrian and trafficked areas, it's a reliable and hardwearing addition to any commercial or public space. As well as paving, Scoutmoor Yorkstone is suitable for setts, kerbs, tactile, steps, water management, specially shaped paving and low-level masonry veneers for planters and seats.

Textures include Diamond Wire Sawn, Capital finish, and Flamed textured. Fully tested to the appropriate standards and UKCA marked to the latest legislation, the Scoutmoor quarry and manufacturing works are accredited by ISO 9001, ISO 45001 and ISO 14001.  
\*Scoutmoor Flamed & Capital swatch finishes coming soon.

| DESCRIPTION                       |   |
|-----------------------------------|---|
| Appearance                        | Blue Grey to Brown fine grained Yorkstone   |
| Manufacturing Process             | Sawn  |
| Geological Type                   | Millstone Grit series, Carboniferous sandstone and Westphalian A, lower coal measure sandstone.                       |
| Quarry Location                   | Appleton Quarry, Yorkshire & Whitworth Quarry, Lancashire   |
| Governing Manufacturing Standards | All data where relevant to be established in accordance with BS EN 1341 : 2012, BS EN 1342 : 2012 & BS EN 1343 : 2012 |
| Petrographical Description        | Pale greenish grey fine grained sandstone   |
| UKCA Marking/DOP                  | <a href="http://www.marshalls.co.uk/declarations">www.marshalls.co.uk/declarations</a>                                |



Landscape House, Premier Way,  
Lowfields Business Park,  
Elland, HX5 9HT  
Tel: 03704 112233  
T: 01422 312000  
E: [grouptechnicalservices@marshalls.co.uk](mailto:grouptechnicalservices@marshalls.co.uk)  
W: [www.marshalls.co.uk/commercial](http://www.marshalls.co.uk/commercial)  
Date Created: 04/09/24

## Scoutmoor Yorkstone

| PHYSICAL PROPERTIES                |  |
|------------------------------------|--|
| Nominal Dimensions (mm)            | Various sizes available                                    |
| Abrasion Resistance (mm)           | 19.53 mm (Mean value to EN 14157 : 2017 (Hev = 19.8mm))    |
| Durability (Freeze-thaw)           | 17.49 / 14.6 MPa (Mean values to EN 12371 : 2010)          |
| Material Density                   | 2389 kg/m <sup>3</sup> (Mean value to EN 1936 : 2006)      |
| Open Porosity (%)                  | 10.82% (Mean value to EN 1936 : 2006)                      |
| Slip Resistance (Dry)              | Sawn 87   Capital 95   Flamed 81                           |
| Slip Resistance (Wet)              | Sawn 86   Capital 77   Flamed 77                           |
| Transverse/Flexural Split/Breaking | 23.39 MPa (Mean value to EN 12372:2006) (Lev = 17.49 MPa)  |
| LRV Range                          | Sawn 33.64   Capital 30.10   Flamed 17.84                  |
| Surface Roughness (Rz - µm)        | Sawn 53.04   Capital 134.28   Flamed 79.86                 |
| Compressive Strength (Mpa)         | 60.69 MPa (Mean value to EN 1926 : 2006 (Lev = 50.14 MPa)) |
| Water Absorption (%)               | 2.31% (Mean value to EN 13755 : 2008 (Hev = 2.36%))        |

| FURTHER INFORMATION    |   |
|------------------------|---|
| Cleaning & Maintenance | Available on request  |
| Contact Us             | For technical information on the design, specification and construction when utilising the product, contact Group Technical Services on 0370 411 2233 |





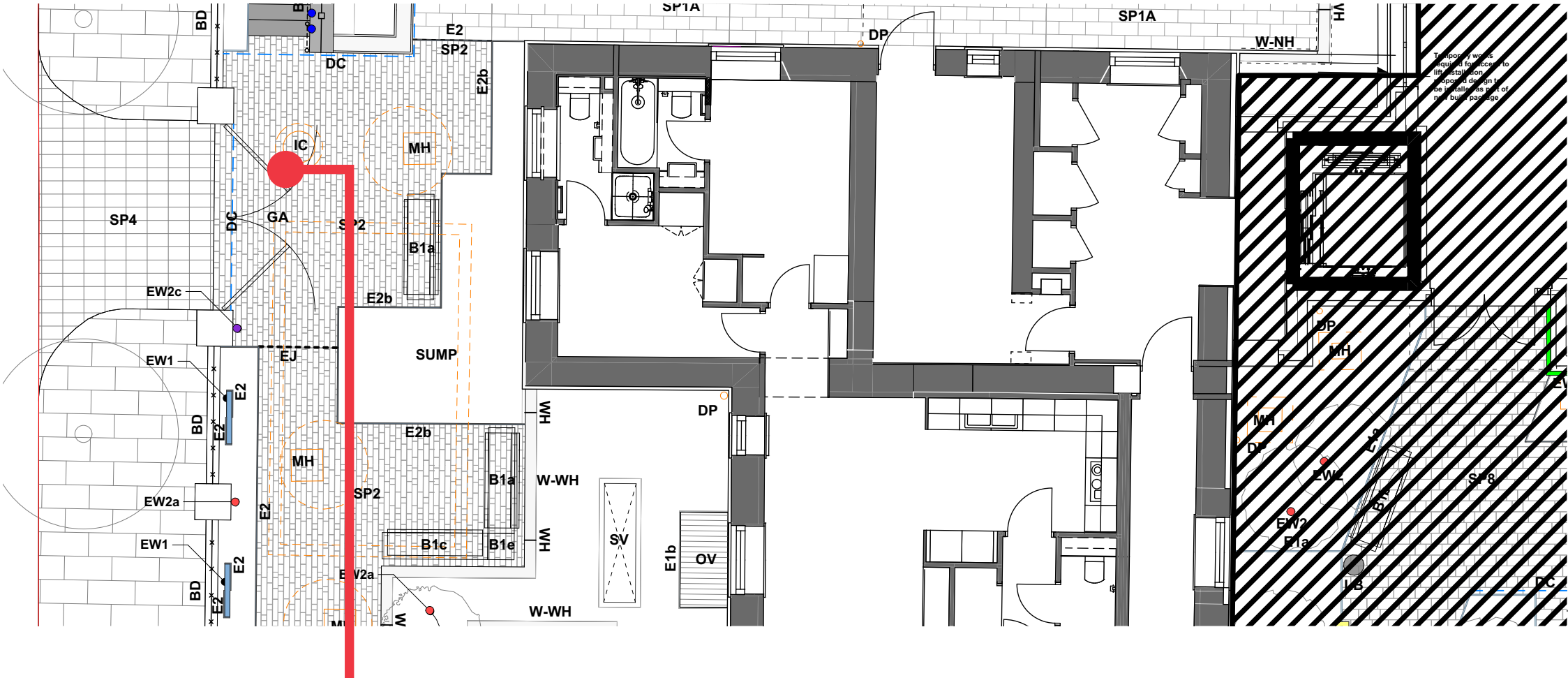
# Paving Material

## Communal Entrance Paving

Paving to Workhouse entrance area.  
Area highlighted as SP2 Type

SP2 Stone Paving Type 2 - Granite Sett  
Marshalls Chinese Granite Sett Paving (50mm)  
Callisto - Silver Grey - flamed (50%),  
Mimas - Red - flamed (20%),  
Larissa - Buff - fine picked (30%),  
100 x 200 (10%) 300 (30%) 400 (60%) mm

Sample colour mix as above shown below.  
Silver blue grey granite provides an overall colour  
which is highlighted with a buff & red colour which  
reflects the yellow & red brickwork that exists within  
the workhouse.



Sample batch of granite setts



Sample laid out on site to show mix of granite Setts.



Sample laid out on site next to workhouse plinth.



The workhouse consists of yellow stock and red bricks.



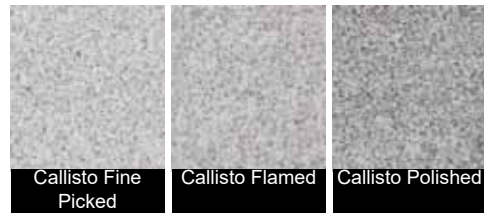
# Paving Material



Landscape House, Premier Way,  
Lowfields Business Park,  
Elland HX5 9HT  
Tel: 03704 11 22 33

T: 01422 312000  
E: [grouptechnicalservices@marshalls.co.uk](mailto:grouptechnicalservices@marshalls.co.uk)  
W: [www.marshalls.co.uk/commercial](http://www.marshalls.co.uk/commercial)  
Date Created: 12/02/24

## Callisto Granite



\*It should be noted that colour variations and markings are characteristic of Natural Stone. Inherent variations cannot be controlled nor the precise shade of stone guaranteed.

A silver stone with grey flecks, Marshalls' Callisto Granite can be used across a variety of applications. With options including bespoke street furniture and planter veneers, as well as kerbs, steps, edgings, water management solutions, paving and setts, it provides the hard-wearing yet attractive quality that granite is known for. Callisto comes in 3 finishes. Both the fine picked and flamed finishes are ideal for use in vehicular trafficked and pedestrian areas thanks to their non-slip, non-skid qualities, whereas the polished finish is better suited to street furniture, cladding or internal projects. Whether a small or large-scale project, Callisto Granite has the flexibility to be used entirely on its own or mixed with other colours from the extensive Marshalls range. All Marshalls granites are fully tested to the appropriate standards in the UK and where relevant UKCA marked in accordance with the latest legislation.

| DESCRIPTION                       |   |
|-----------------------------------|---|
| Appearance                        | Grey to pale grey with very fine pink and white hues  |
| Manufacturing Process             | Sawn  |
| Geological Type                   | Granite   |
| Quarry Location                   | Fujian Province, China  |
| Governing Manufacturing Standards | All data where relevant to be established in accordance with BS EN 1341 : 2012, BS EN 1342 : 2012 & BS EN 1343 : 2012 |
| Petrographical Description        | Grey to pale grey coarse grained fresh Granite  |
| UKCA Marking/DOP                  | <a href="http://www.marshalls.co.uk/declarations">www.marshalls.co.uk/declarations</a>                                |



Landscape House, Premier Way,  
Lowfields Business Park,  
Elland HX5 9HT  
Tel: 03704 11 22 33

T: 01422 312000  
E: [grouptechnicalservices@marshalls.co.uk](mailto:grouptechnicalservices@marshalls.co.uk)  
W: [www.marshalls.co.uk/commercial](http://www.marshalls.co.uk/commercial)  
Date Created: 12/02/24

## Callisto Granite

| PHYSICAL PROPERTIES                |  |
|------------------------------------|--|
| Tolerances on Work Dimensions (mm) | Paving Class 1 tolerances to all dimensions as standard, Setts Class 2 tolerances to all dimensions as standard, Kerbs Class 2 tolerances to all dimensions as standard, Others by agreement |
| Abrasion Resistance (mm)           | 16.5mm (Mean value to EN 1341 : 2012 (Hev = 17mm))   |
| Durability (Freeze-thaw)           | 17.6/14.5 MPa (Mean values to EN 12371 : 2006)   |
| Material Density                   | 2609 kg/m <sup>3</sup> (Mean value to EN 1936 : 2006)  |
| Open Porosity (%)                  | 1.07% (Mean value to EN 1936 : 2006)   |
| Slip Resistance (Dry)              | Polished 72   Flamed 84   Fine Picked 89   |
| Slip Resistance (Wet)              | Polished 43   Flamed 60   Fine Picked 57   |
| Transverse/Flexural Split/Breaking | 12.62 MPa (Mean value to EN 12372 : 2006 (Lev = 11.76 MPa))  |
| LRV Range                          | Polished 37.62   Flamed 39.18   Fine Picked 45.57  |
| Surface Roughness (Rz - µm)        | Polished 16   Flamed >75   Fine Picked >75   |
| Compressive Strength (Mpa)         | 105 MPa (Mean value to EN 1926 : 2006 (Lev = 97 MPa))  |
| Water Absorption (%)               | 0.35% (Mean value to EN 13755 : 2008 (Hev=0.4%))   |

| SUPPLY    |        |
|-----------|--------|
| Packaging | Crated |

| FURTHER INFORMATION    |   |
|------------------------|---|
| Cleaning & Maintenance | Available on request  |
| Contact Us             | For technical information on the design, specification and construction when utilising the product, contact Group Technical Services on 0370 411 2233 |



# Paving Material

**Marshalls**  
Creating Better Spaces

Landscape House, Premier Way,  
Lowfields Business Park,  
Elland HX5 9HT  
Tel: 03704 11 22 33

T: 01422 312000  
E: [grouptechnicalservices@marshalls.co.uk](mailto:grouptechnicalservices@marshalls.co.uk)  
W: [www.marshalls.co.uk/commercial](http://www.marshalls.co.uk/commercial)  
Date Created: 15/02/24

**Marshalls**  
Creating Better Spaces

Landscape House, Premier Way,  
Lowfields Business Park,  
Elland HX5 9HT  
Tel: 03704 11 22 33

T: 01422 312000  
E: [grouptechnicalservices@marshalls.co.uk](mailto:grouptechnicalservices@marshalls.co.uk)  
W: [www.marshalls.co.uk/commercial](http://www.marshalls.co.uk/commercial)  
Date Created: 15/02/24

## Mimas Granite



\*It should be noted that colour variations and markings are characteristic of Natural Stone. Inherent variations cannot be controlled nor the precise shade of stone guaranteed.

Marshalls supplies a comprehensive range of granites. Traditionally a tough, durable material, granite can be fashioned into a wide range of Landscape products to provide a very modern aesthetic. Marshalls' Mimas Granite is a red-grey granite available in three finishes - flamed, fine picked and polished. Strong enough for pedestrian and vehicular trafficked areas when used as paving, Mimas is also available as setts, water management, street furniture, kerbs, tactile or bespoke masonry features. Mimas Granite combines elegant aesthetics with the natural hard-wearing strength of granite. All Marshalls granites are fully tested to the appropriate standards in the UK and where relevant UKCA marked in accordance with the latest legislation.

| DESCRIPTION                       |   |
|-----------------------------------|---|
| Appearance                        | Red with grey and white inclusions  |
| Manufacturing Process             | Sawn  |
| Geological Type                   | Granite   |
| Quarry Location                   | Shandong Province, China  |
| Governing Manufacturing Standards | All data where relevant to be established in accordance with BS EN 1341 : 2012, BS EN 1342 : 2012 & BS EN 1343 : 2012 |
| Petrographical Description        | Pink and pale grey coarse grained Granite   |
| UKCA Marking/DOP                  | <a href="http://www.marshalls.co.uk/declarations">www.marshalls.co.uk/declarations</a>                                |



## Mimas Granite

| PHYSICAL PROPERTIES                |  |
|------------------------------------|--|
| Tolerances on Work Dimensions (mm) | Paving Class 1 tolerances to all dimensions as standard, Setts Class 2 tolerances to all dimensions as standard, Kerbs Class 2 tolerances to all dimensions as standard, Others by agreement |
| Abrasion Resistance (mm)           | 18.4mm (Mean value to EN 14157 : 2004 (Hev = 19.54mm))   |
| Durability (Freeze-thaw)           | 13.9/12.1 MPa (Mean values to EN 12371 : 2006)   |
| Material Density                   | 2600 kg/m <sup>3</sup> (Mean value to EN 1936 : 2006)  |
| Open Porosity (%)                  | 0.55% (Mean value to EN 1936 : 2006)   |
| Slip Resistance (Dry)              | Polished 70   Flamed 84   Fine Picked 90   |
| Slip Resistance (Wet)              | Polished 19   Flamed 58   Fine Picked 75   |
| Transverse/Flexural Split/Breaking | 11.7 MPa (Mean value to EN 12372 : 2006 (Lev = 10.7 MPa))  |
| LRV Range                          | Polished 27.08   Flamed 25.67   Fine Picked 34.18  |
| Surface Roughness (Rz - µm)        | Polished 3   Flamed 45.2   Fine Picked >75   |
| Compressive Strength (Mpa)         | 179 MPa (Mean value to EN 1926 : 2006 (Lev = 155.5 MPa))   |
| Water Absorption (%)               | 0.3% (Mean value to EN 13755 : 2002 (Hev = 0.3%))  |

| SUPPLY    |        |
|-----------|--------|
| Packaging | Crated |

| FURTHER INFORMATION    |   |
|------------------------|---|
| Cleaning & Maintenance | Available on request  |
| Contact Us             | For technical information on the design, specification and construction when utilising the product, contact Group Technical Services on 0370 411 2233 |





# Paving Material



Landscape House, Premier Way,  
Lowfields Business Park,  
Elland HX5 9HT  
Tel: 03704 11 22 33

T: 01422 312000  
E: [grouptechnicalservices@marshalls.co.uk](mailto:grouptechnicalservices@marshalls.co.uk)  
W: [www.marshalls.co.uk/commercial](http://www.marshalls.co.uk/commercial)  
Date Created: 12/02/24

## Larissa Granite



Larissa Fine Picked

\*It should be noted that colour variations and markings are characteristic of Natural Stone. Inherent variations cannot be controlled nor the precise shade of stone guaranteed.

Larissa Granite is a versatile and durable stone that offers hard-wearing performance and strength while adding elegance to a wide range of schemes. A light beige colour, Larissa Granite delivers the resilience that granite is known for. Suitable for pedestrian and vehicular trafficked areas, it is available across a wide range of product areas including paving, setts, kerbs, tactile, steps, water management and street furniture. All Marshalls granites are fully tested to the appropriate standards in the UK and where relevant UKCA marked in accordance with the latest legislation.

| DESCRIPTION                       |   |
|-----------------------------------|---|
| Appearance                        | Buff with black and white and fine silver inclusions  |
| Manufacturing Process             | Sawn  |
| Geological Type                   | Granite   |
| Quarry Location                   | Shandong Province, China  |
| Governing Manufacturing Standards | All data where relevant to be established in accordance with BS EN 1341 : 2012, BS EN 1342 : 2012 & BS EN 1343 : 2012 |
| Petrographical Description        | Off white to pale grey and spotted orange coarse grained granite  |
| UKCA Marking/DOP                  | <a href="http://www.marshalls.co.uk/declarations">www.marshalls.co.uk/declarations</a>                                |



Landscape House, Premier Way,  
Lowfields Business Park,  
Elland HX5 9HT  
Tel: 03704 11 22 33

T: 01422 312000  
E: [grouptechnicalservices@marshalls.co.uk](mailto:grouptechnicalservices@marshalls.co.uk)  
W: [www.marshalls.co.uk/commercial](http://www.marshalls.co.uk/commercial)  
Date Created: 12/02/24

## Larissa Granite

| PHYSICAL PROPERTIES                |  |
|------------------------------------|--|
| Tolerances on Work Dimensions (mm) | Paving Class 1 tolerances to all dimensions as standard, Setts Class 2 tolerances to all dimensions as standard, Kerbs Class 2 tolerances to all dimensions as standard, Others by agreement |
| Abrasion Resistance (mm)           | 16.5mm (Mean value to EN 14157 : 2004 (Hev = 16.5mm))  |
| Durability (Freeze-thaw)           | 11/12.2 MPa (Mean values to EN 12371 : 2006)   |
| Material Density                   | 2590 kg/m <sup>3</sup> (Mean value to EN 1936 : 2006)  |
| Open Porosity (%)                  | 1.15% (Mean value to EN 1936 : 2006)   |
| Slip Resistance (Dry)              | Fine Picked 91   |
| Slip Resistance (Wet)              | Fine Picked 77   |
| Transverse/Flexural Split/Breaking | 14.3 MPa (Mean value to EN 12372 : 2006 (Lev = 12.6 MPa))  |
| LRV Range                          | Fine Picked 59.05  |
| Surface Roughness (Rz - µm)        | Fine Picked >75  |
| Compressive Strength (Mpa)         | 169 MPa (Mean value to EN 1926 : 2006 (Lev = 133 MPa))   |
| Water Absorption (%)               | 0.4% (Mean value to EN 13755 : 2002 (Hev = 0.4%))  |

| SUPPLY    |        |
|-----------|--------|
| Packaging | Crated |

| FURTHER INFORMATION    |   |
|------------------------|---|
| Cleaning & Maintenance | Available on request  |
| Contact Us             | For technical information on the design, specification and construction when utilising the product, contact Group Technical Services on 0370 411 2233 |





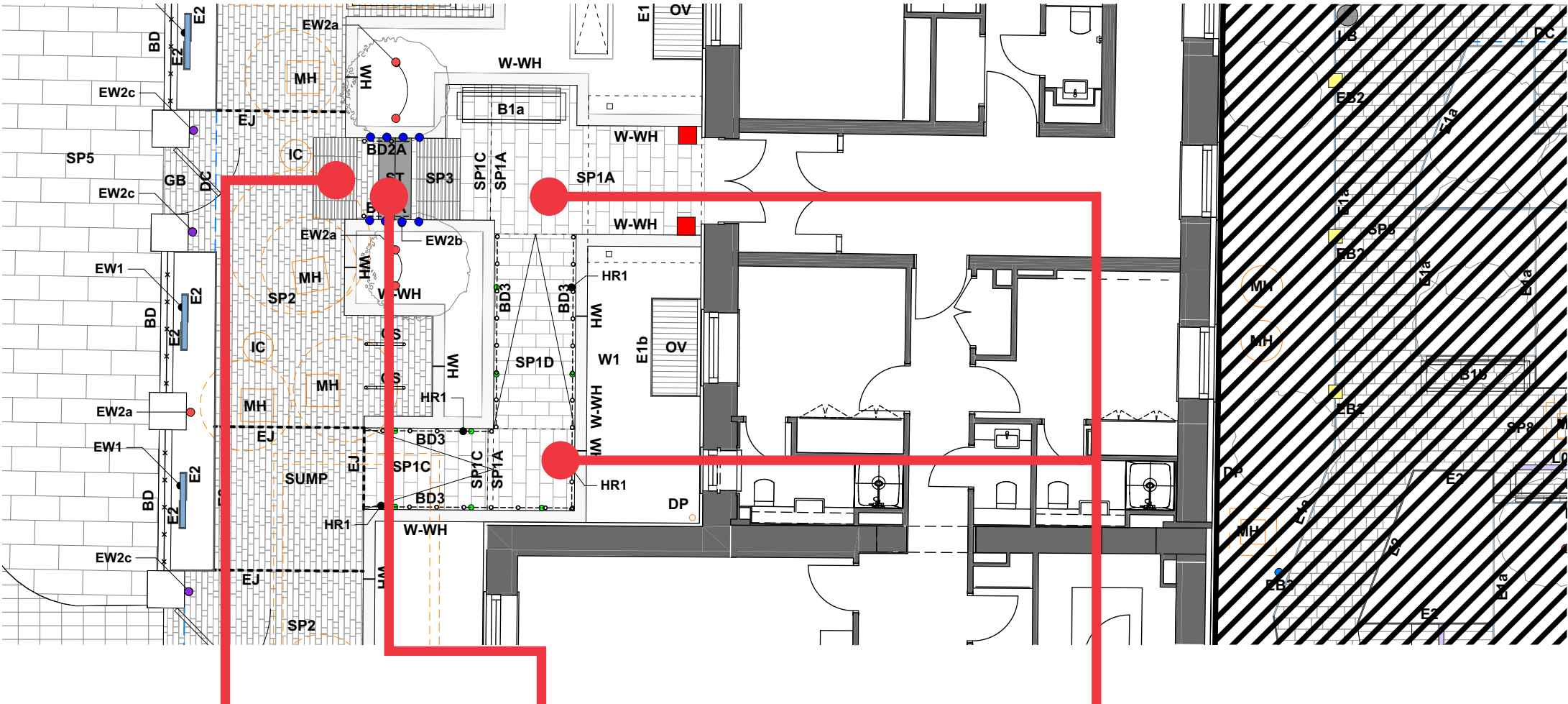
# Paving Material

## Stepped Areas

Paving to Workhouse entrance steps & North House steps

- ST Marshalls Granite Steps with nosing
- Marshalls Chinese Granite Sett Paving (50mm)
- Chinese Granite - Callisto Silver grey - flamed finished, 200(H) x 300(W) x 1000(L)mm
- Accessories: 50 x 50mm Dark grey granite Bullnose inset visibility strips to step nosings.

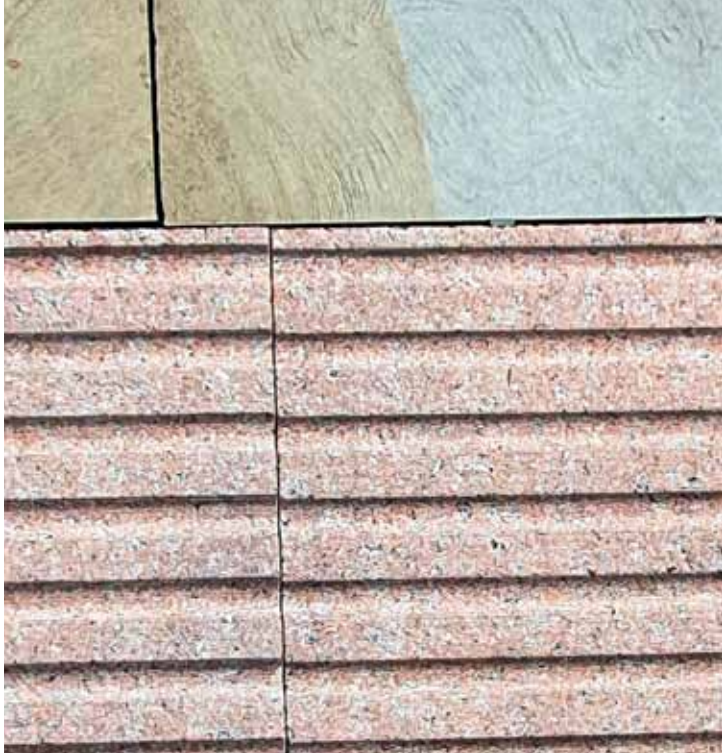
- SP3 Stone Paving Type 3 - Tactile
- Marshalls Chinese Granite Flag Paving (50mm)
- Tactile Paving, Mimas - Red - light sand blasted, 400 x 400mm.



Paving to Workhouse entrance and ramps

The workhouse entrance and ramp will incorporate the same material which is used to the northern secondary entrance:

- SP1 Stone Paving Type 1 - Yorkstone Flag
- Marshalls Yorkstone Flag Paving (50mm)
- Scoutmoor Sandstone, 200 x 600mm
- SP1A Pedestrian loading over podium on pedestal (main entrance area)
- SP1C Pedestrian loading - over existing ground
- SP1D Pedestrian loading - over podium



Material SP3 - Tactile paving safety warning before steps. Material creates contrast for visual imperment before steps.



Material ST area - Marshalls Granite steps



Material SP1 Workhouse entrance ramp - Yorkstone Paving



# Paving Material

---

LLEWELYN  
DAVIES