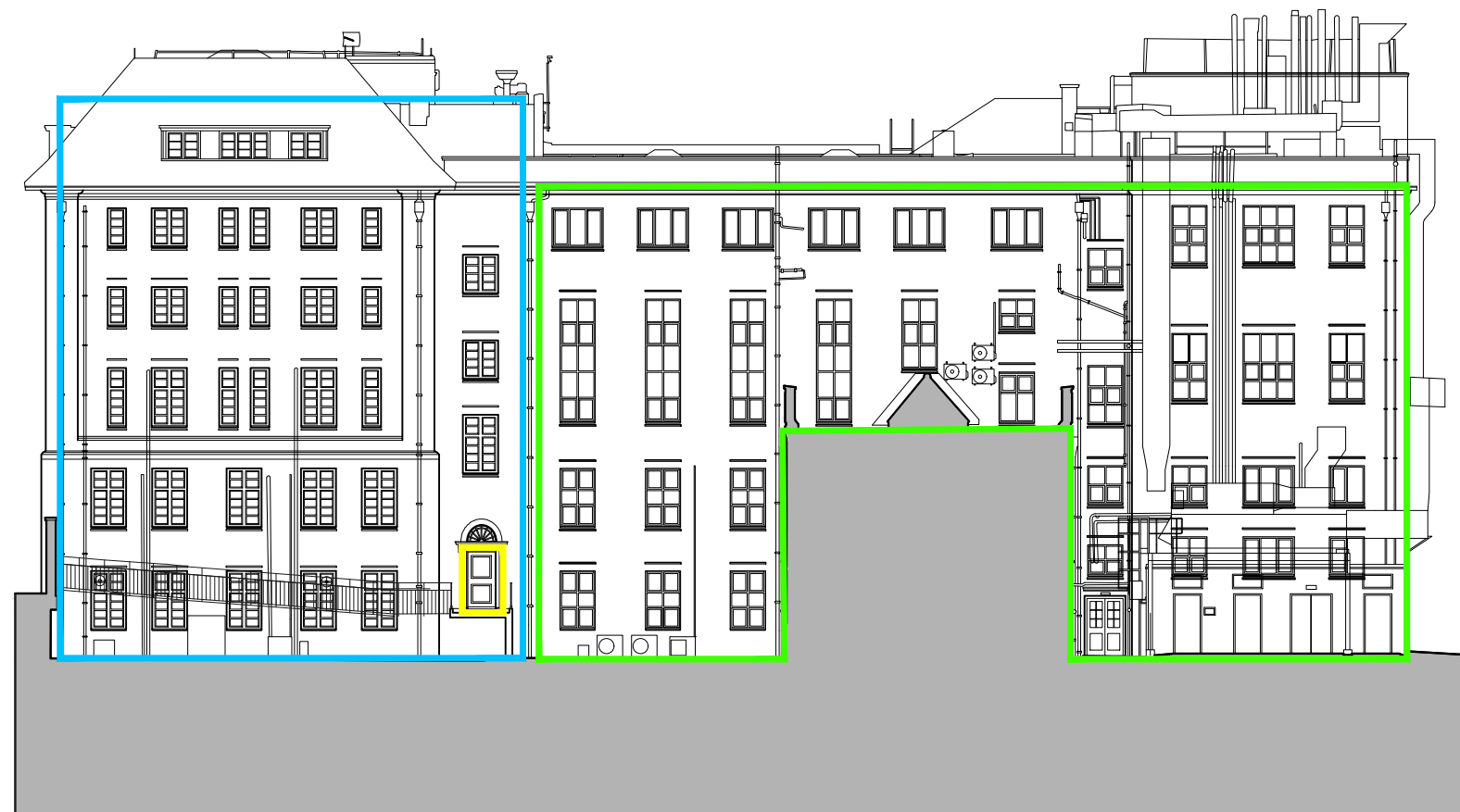


**KEY:**

<span style="color: green;">■</span>	<b>REPLACE - NEW DOUBLE GLAZED UNITS</b>
-	Remove existing steel windows and replace with new double glazed aluminium / steel framed windows. Allow for louvred panels where retained services pass through windows.
<span style="color: blue;">■</span>	<b>REPLACE AND REFURBISH</b>
-	Repair and refurbish existing timber frames
-	Replace existing steel windows with double glazed steel windows
-	Opening lights swing to match existing.
<span style="color: yellow;">■</span>	<b>RETAIN EXISTING WINDOWS</b>
-	No work needed.



**DRAWING NOTES**

1. filename: 1058-RVCHB-1401-Proposed Elevations.dwg
2. Do not scale this drawing in either paper or digital form. Use figured dimensions only. Detailed site survey to be carried out to establish tolerances. Figured dimensions are in mm. All dimensions shall be verified on site before proceeding with the work. The architect shall be notified of any discrepancies.
3. This drawing has been produced for sole use on this project and is not intended for use by any other person or for any other purpose. © Copyright RSS (U.K.)
4. All printed copies should be made at 100% of the original page size. Use scale bars, where included, to check that the drawing has been printed to the intended scale as identified in the drawing title block.
5. This drawing is not intended for construction unless specifically described as such.

**REVISIONS**

REV	DATE	STATUS
PL02	16.09.24	For Planning

Changes since last issue:  
Aluminium window fenestration adjusted to suit ventilation louvres and opening lights.



28 NAVIGATION ROAD LONDON E3 3TG		<b>rivingtonstreetstudio</b>				
T : 020 7739 8945 E : rss@rssa.co.uk						
job title <b>Royal Veterinary College Hobday Building - Aluminium Windows</b>						
drawing title <b>South Elevation</b>						
drawn by	job no.	suitability	revision			
JP	1058	S4	PL02			
scale	1:250@A3					
PROJECT	ORIGIN	VOLUME	LEVEL	TYPE	ROLE	NUMBER
RVCHB_	RSS	_00	_ZZ	_DR	_A	_1402