

22/03/24
Client Name - Capital 38
Job No. 4677

21 Bloomsbury Street Planning Conditions and Obligations 11

Project Team

CLIENT

Capital 38
Prince Albert House
2 Kingsmill Terrace
London, NW8 6BN

ARCHITECT

Stiff + Trevillion
16 Woodfield Road
London, W9 2BE

DEVELOPMENT MANAGER

Morgan Capital Partners LLP
25 Watling Street
London EC4M 9BR

COST CONSULTANT

Gleeds
95 New Cavendish St
London W1W 6XF

SERVICES ENGINEER + FIRE ENGINEER + BREEAM ASSESSOR + SUSTAINABILITY CONSULTANT + ACOUSTIC CONSULTANT

Sweco UK
2 Eldon St
London EC2M 7LS

STRUCTURAL ENGINEER + CIVIL ENGINEER

Heyne Tillett Steel
Chart House
16 Chart St, London N1 6DD

PLANNING CONSULTANT

Gerald Eve LLP
One Fitzroy, 6 Mortimer Street
London W1T 3JJ

VERIFIED VIEWS

Miller Hare
Mappin House
4 Winsley Street
London W1W 8HF

HERITAGE CONSULTANT

KMHeritage
PO Box 51
Harleston IP20 9YY

SUNLIGHT & DAYLIGHT CONSULTANT

Lumina
9 Heneage Street, Spitalfields,
London E1 5LJ

PRINCIPLE DESIGNER + FACADE ACCESS & MAINTENANCE

Orsa
Berkley Square House
London, W1J 6BD

Contents

- 1.0 Discharge of Condition 11 4
- Proposed GA Plans 5
- Detailed Plans 6-7



1.0

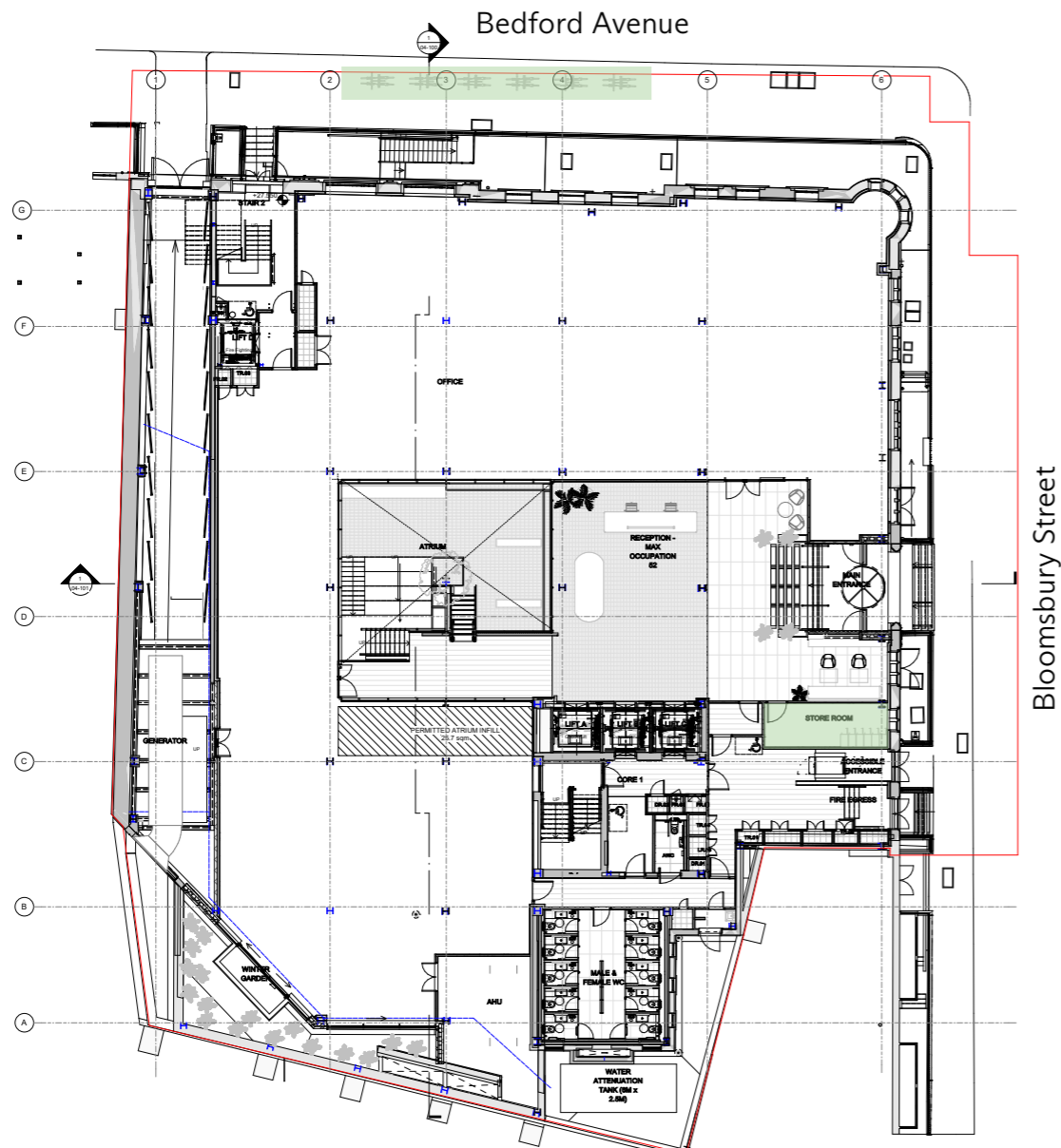
Condition 11

Discharge of Condition 11

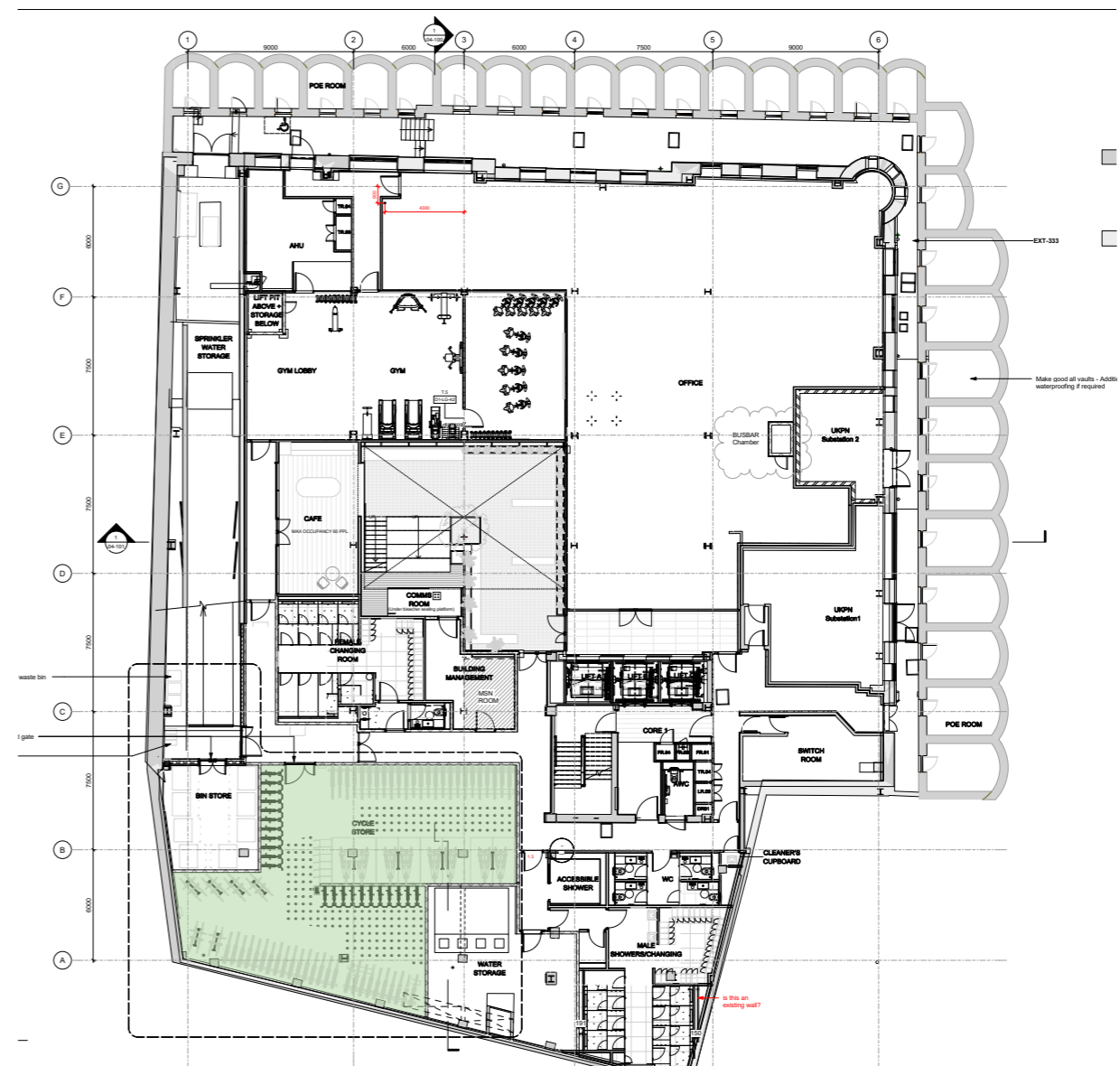
Prior to occupation of the development hereby permitted details of secure and covered cycle storage area for 162 cycles, of which at least 112 shall be two tier or Sheffield/M-shaped stands, shall be submitted to and approved by the local planning authority. The approved facilities shall thereafter be provided in its entirety prior to the first occupation of any of the new units, and permanently retained thereafter.

1.1 Condition 11

General Arrangement Plans - Cycle Space



Ground Floor Plan



Lower Ground Floor Plan

Designated Cycle Spaces

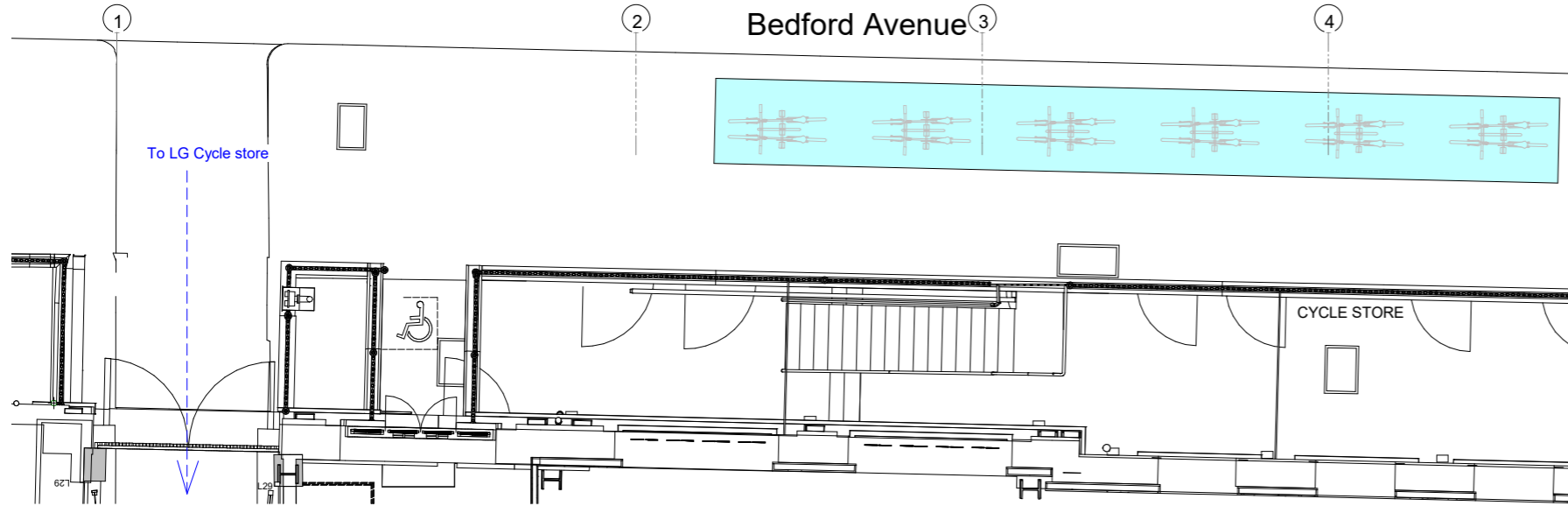
1.2 Condition 11



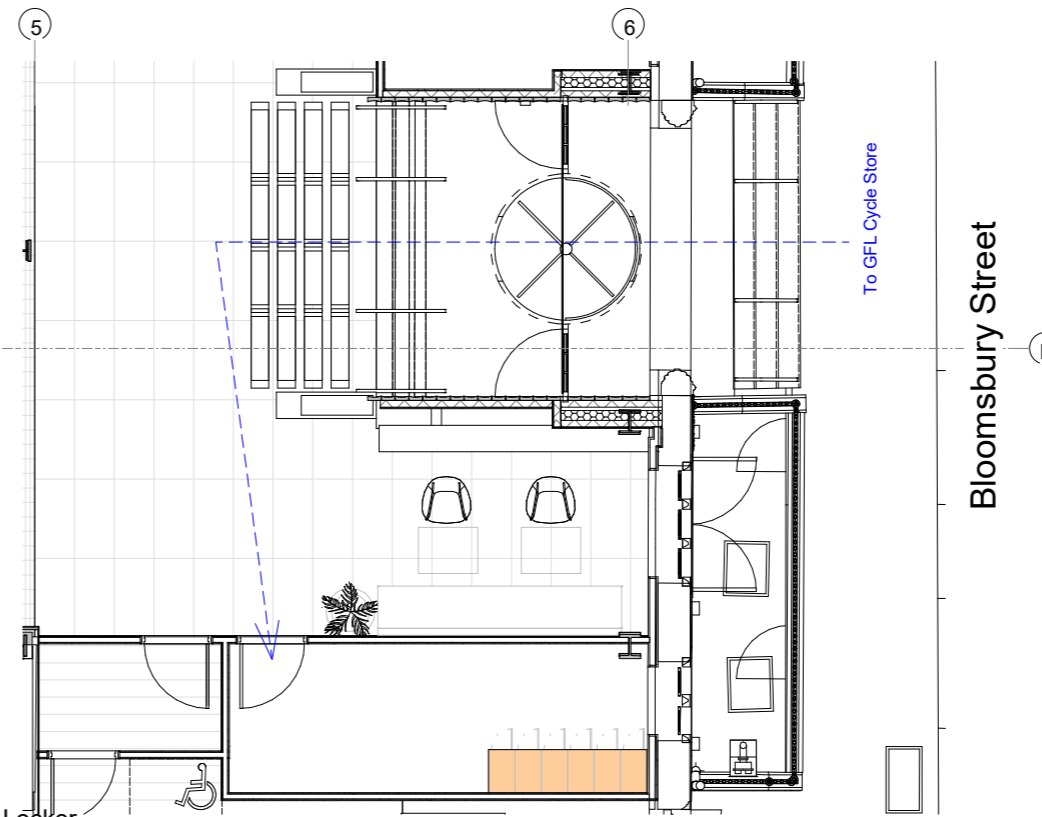
Adaptable (EXT-301) ■



Folding (EXT-321) ■



1 Ground Floor Plan - External CycleStand
1 : 50



2 Ground Floor Plan - Cycle Locker
1 : 50

REQUIREMENTS

Long Stay	158
Short Stay	12

BREAKDOWN

LG Floor

Adaptable (EXT-301)	8	■
Floor mounted (EXT-301)	8	■
Double Stack (EXT-311)	102	■
Wall mounted (EXT303)	26	■
Folding (EXT-321)	18	■

Core Planning Paking
Space Total : 118

Sum 162

Ground Floor

External (EXT-301)	12	■
Folding (EXT-321)	18	■

Condition 11



Adaptable (EXT-301) ■



Folding (EXT-321) ■



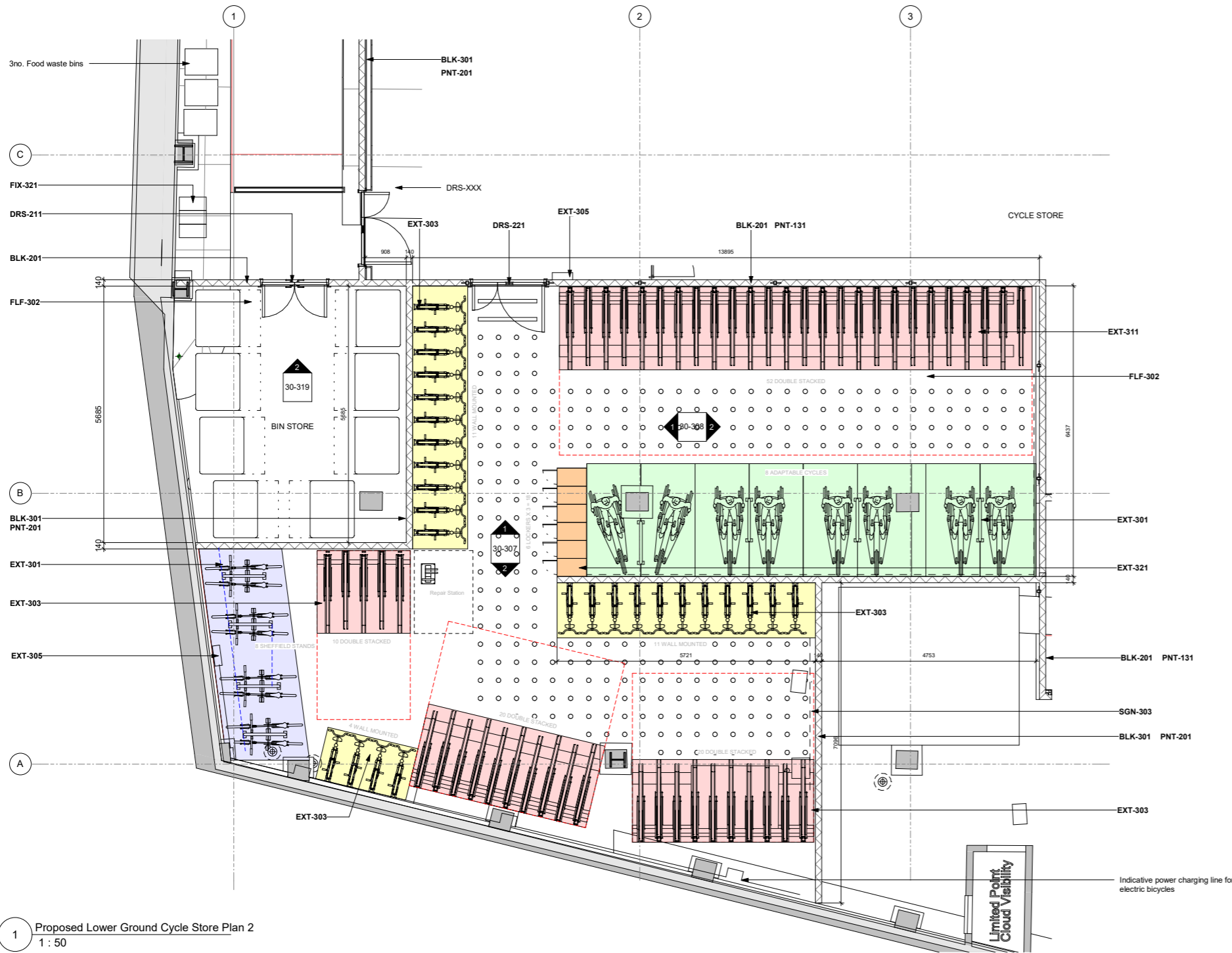
Wall mounted (EXT-303) ■



Floor mounted (EXT-301) ■



Double Stack (EXT-311) ■



1 Proposed Lower Ground Cycle Store Plan 2
1 : 50

REQUIREMENTS

Long Stay	158
Short Stay	12

BREAKDOWN

LG Floor

Adaptable (EXT-301)	8	■
Floor mounted (EXT-301)	8	■
Double Stack (EXT-311)	102	■
Wall mounted (EXT-303)	26	■
Folding (EXT-321)	18	■

Core Planning Paking
Space Total : 118

Sum **162**

Ground Floor

External (EXT-301)	12	■
Folding (EXT-321)	18	■

S + T

T: +44 (0)20 8960 5550
E: mail@stiffandtrevillion.com
16 Woodfield Road, London W9 2BE