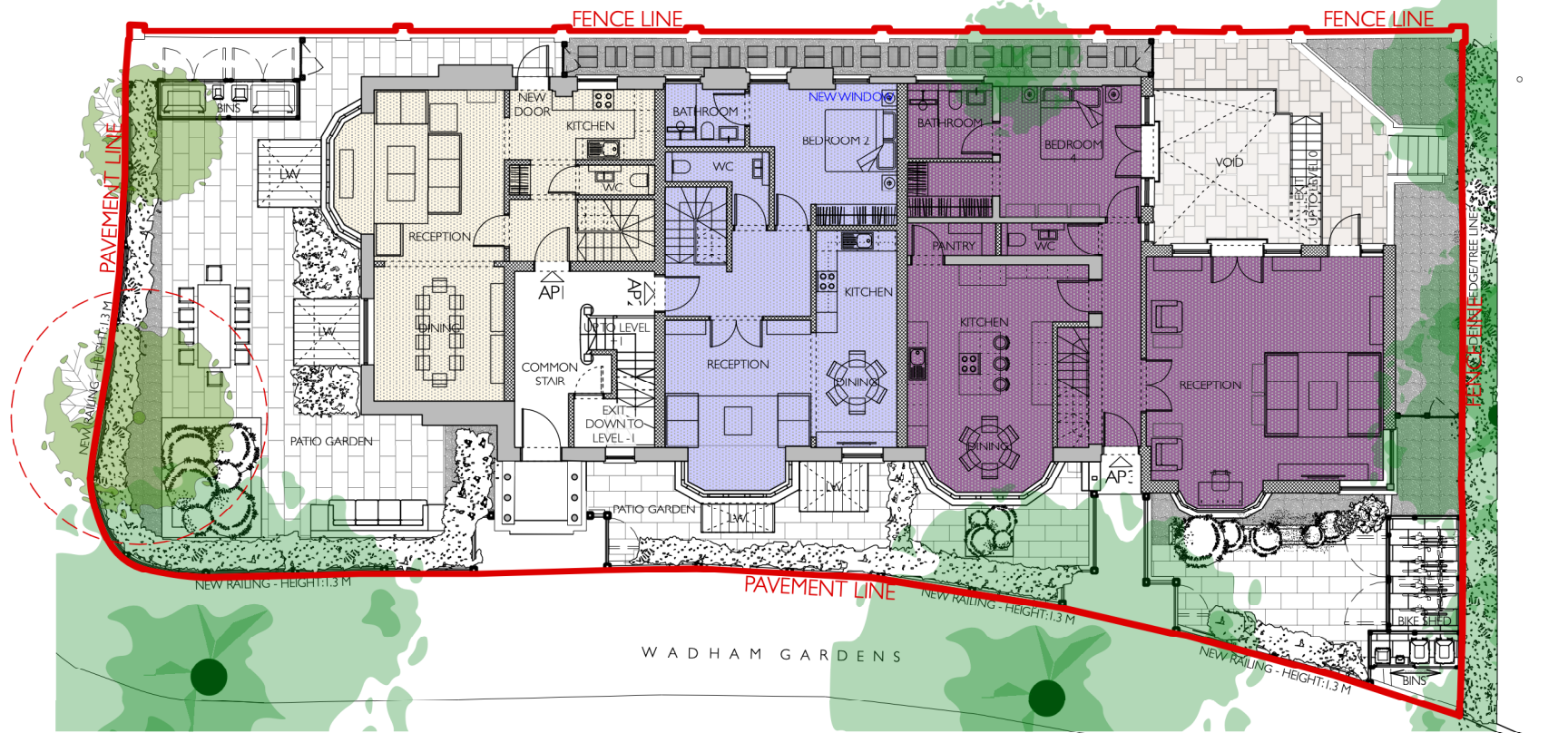
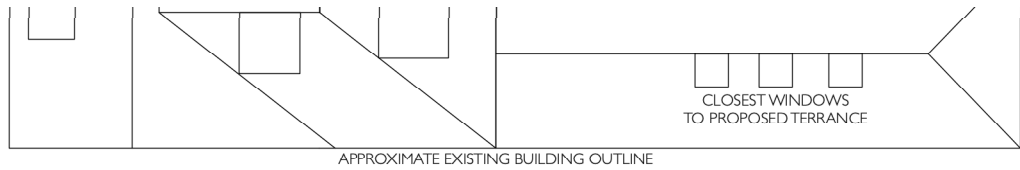
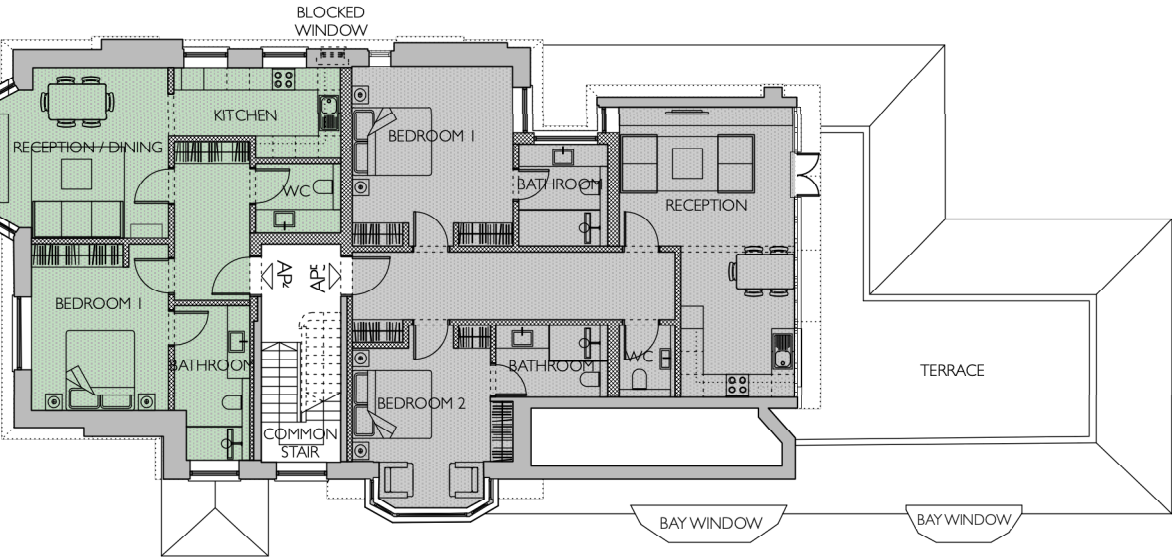


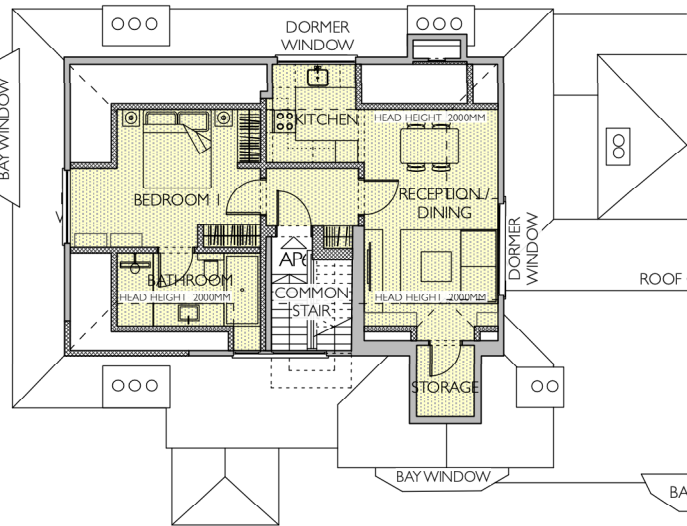
PROPOSED LEVEL -1 LOWER GROUND FLOOR



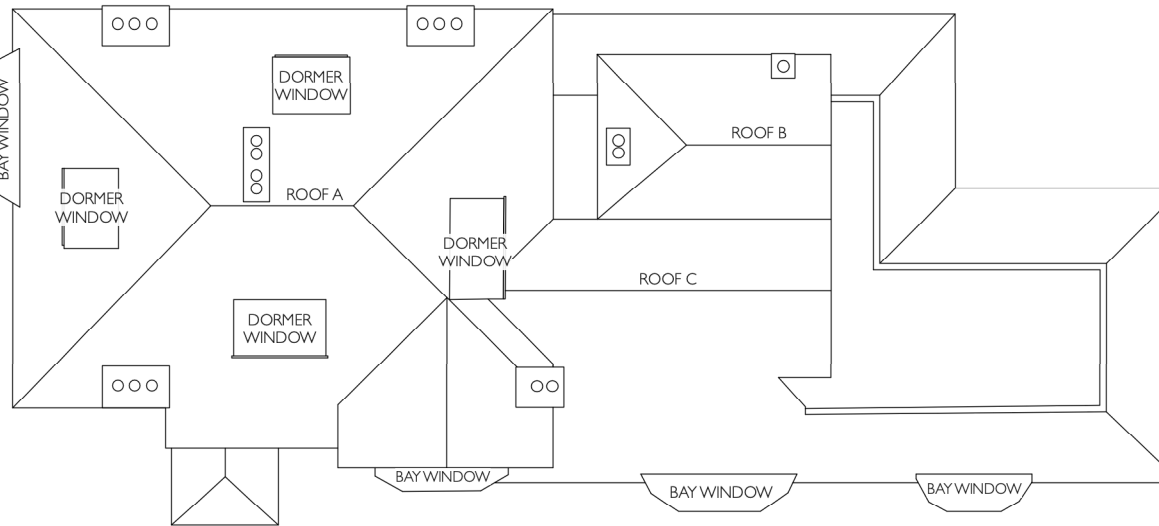
PROPOSED LEVEL 0 GROUND FLOOR



PROPOSED LEVEL +1 FIRST FLOOR



PROPOSED LEVEL +2 SECOND FLOOR



PROPOSED LEVEL +3 ROOF

GENERAL NOTES

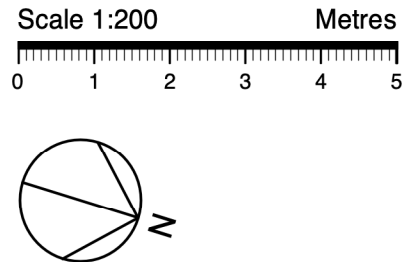
All dimensions are to be checked on site before commencement of works.

All sizes and dimensions to any structural elements are indicative only. See structural engineer's drawings for actual sizes/dimensions.

Sizes of and dimensions to any service elements are indicative only. See service engineer's drawings for actual sizes/dimensions.

This drawing to be read in conjunction with all relevant Architect's drawings, specifications and other consultants' information.

DO NOT SCALE FROM THIS DRAWING



GROSS INTERNAL AREA (GIA)

APARTMENT 1 - 2 BEDROOMS - 4 PEOPLE
-1 LEVEL LOWER GROUND: 71m²
0 LEVEL GROUND FLOOR: 61m²
TOTAL: 132m²

APARTMENT 2 - 3 BEDROOMS - 5 PEOPLE
-1 LEVEL LOWER GROUND: 75m²
0 LEVEL GROUND FLOOR: 75m²
TOTAL: 150m²

APARTMENT 3 (The Cottage) - 4 BEDROOMS - 7 PEOPLE
-1 LEVEL LOWER GROUND: 117m²
0 LEVEL GROUND FLOOR: 123m²
TOTAL: 240m²

APARTMENT 4 - 1 BEDROOM - 2 PEOPLE
+1 LEVEL FIRST FLOOR: 69m²
TOTAL: 69m²

APARTMENT 5 - 2 BEDROOMS - 4 PEOPLE
+1 LEVEL FIRST FLOOR: 102m²
TOTAL: 102m²

APARTMENT 6 - 1 BEDROOM - 2 PEOPLE
+2 LEVEL SECOND FLOOR: 60m²
TOTAL: 60m²

TOTAL = 753m²

REV:	DATE:	DESCRIPTION:	INITIALS:	1 WADHAM GARDENS PROPOSED DRAWINGS	
A	04/10/2018	General amendments to bike shed and fencing.	DP		
B	08/06/2022	General amendments to bins store doors.	JC	PROJECT:	Wadham Gardens
C	17/06/2024	General amendments for BRE daylight. - LGF Plan Bed 2 door/window opening - LGF Plan Bed 3 furniture arrangement. - AP3 foot of external step.	JC	CLIENT:	Marcus Cooper Group
				DRAWING:	Proposed Plans
				SCALE:	1:100@A1/1:200@A3
				DATE:	May-18
				CAD FILE:	1179-01 Proposed
				DRAWING NO:	1179-01 Proposed
				REV:	C
				HUB ARCHITECTS AND DESIGNERS LTD	
				15 Hoopers Yard London NW6 7EJ t: 020 7328 2576 f: 0207 624 7811 Email: info@hubarchitects.co.uk	