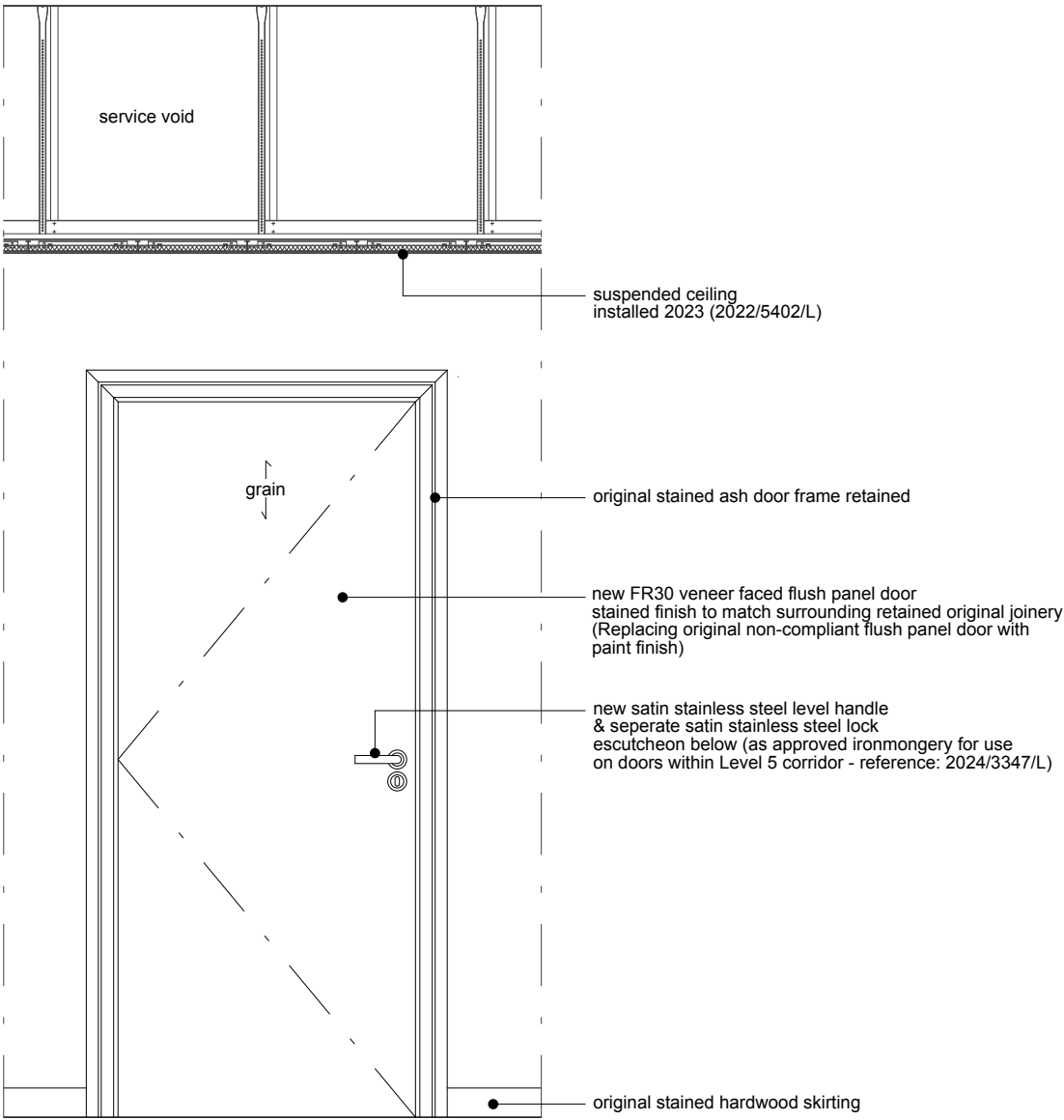
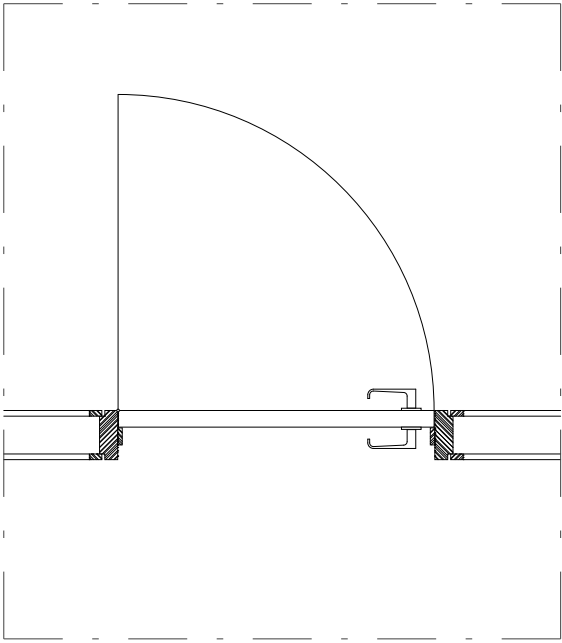


R

Office/Teaching Room FR30 single leaf door



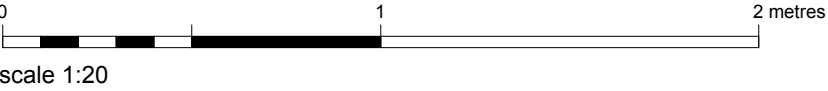
Corridor Elevation  
scale 1:20



Plan  
scale 1:20

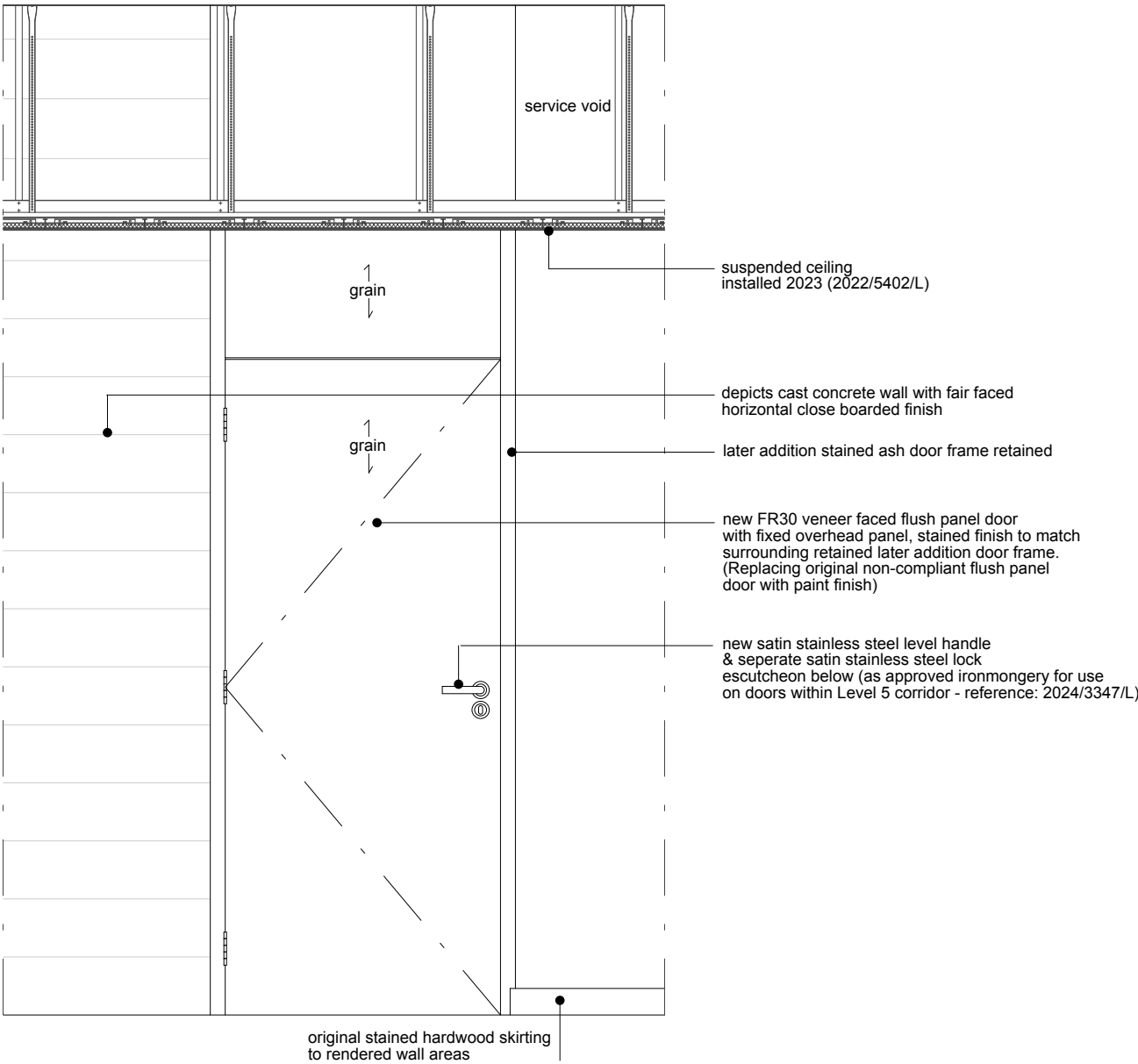


Door Type 'R' - Photo Reference  
New Stained Office/Teaching Room Doors

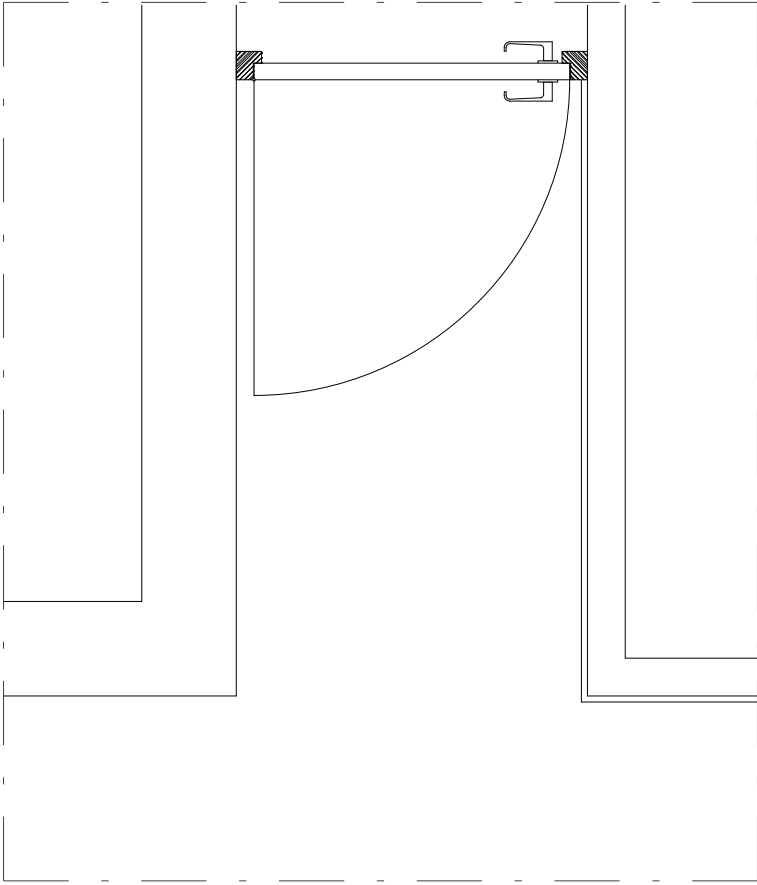


R1

Office/Teaching Room FR30 single leaf door with fixed overhead panel



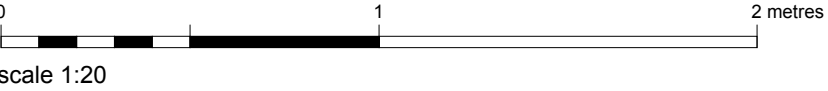
Corridor Elevation  
scale 1:20



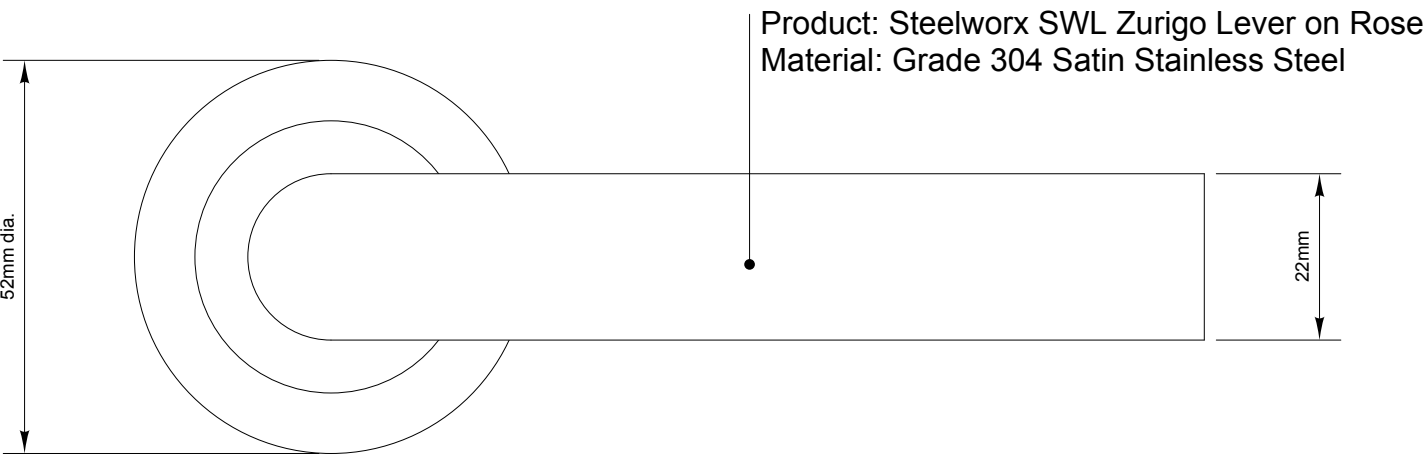
Plan  
scale 1:20



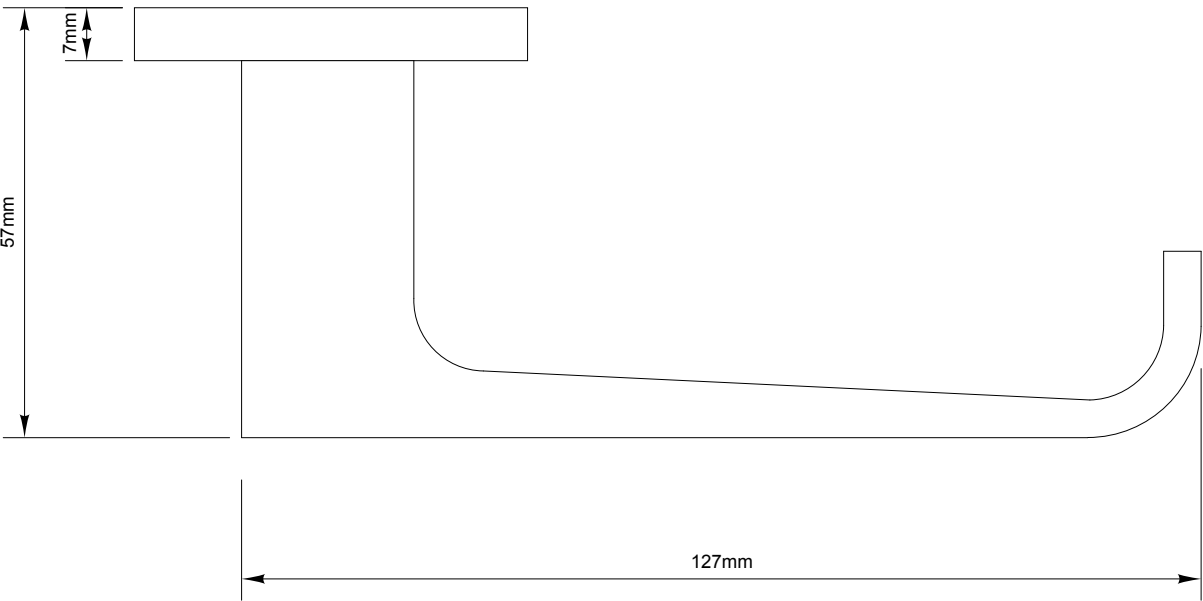
Door Type 'R1' - Photo Reference  
New Stained Office/Teaching Room Door  
with Fixed Overhead Panel



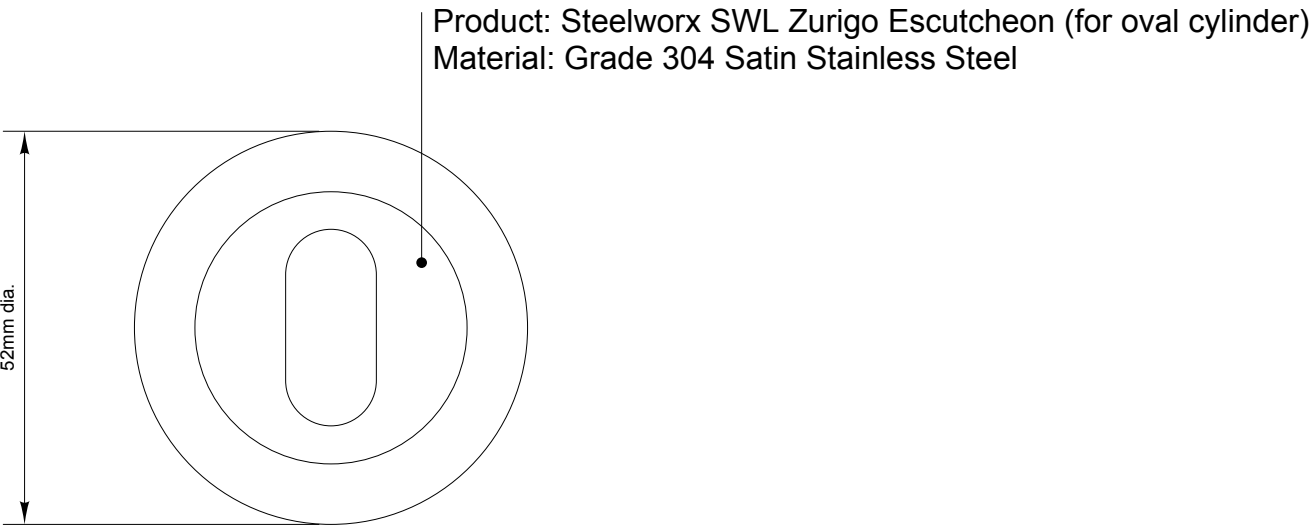
Proposed New Ironmongery - Door Types R & R1  
As approved for use on replacement office/teaching room doors within  
the Philips Building 5th floor corridor refurbishment - Ref: 2024/3347/L



Lever Handle - Elevation  
scale 1:1



Lever Handle - Plan  
scale 1:1



Lock Escutcheon - Elevation  
scale 1:1



Lock Escutcheon - Plan  
scale 1:1

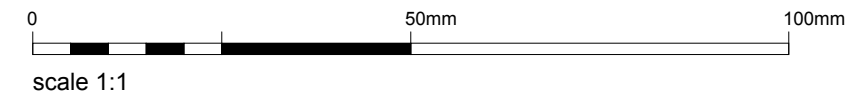


Photo Reference - Proposed Ironmongery

This drawing is to be read in conjunction with associated drawings:

EXISTING  
SOAS-PB-DT-EX-001 Rev A Corridor Door Types - Level 2, 3 & 4  
SOAS-PB-DT-EX-002 Rev A Corridor Door Types - Level 2, 3 & 4  
SOAS-PB-L2P-EX-010 Rev A Level 2 Plan Existing  
SOAS-PB-L3P-EX-010 Rev A Level 3 Plan Existing  
SOAS-PB-L4P-EX-010 Rev A Level 4 Plan Existing

PROPOSED  
SOAS-PB-DT-PR-001 Corridor Door Types - Level 2, 3 & 4  
SOAS-PB-L2P-PR-010 Level 2 Plan Proposed  
SOAS-PB-L3P-PR-010 Level 3 Plan Proposed  
SOAS-PB-L4P-PR-010 Level 4 Plan Proposed

Date \_\_\_\_\_ Rev \_\_\_\_\_

Neville Bruton Design

info@nb-design.co.uk  
copyright reserved

Client

SOAS  
Thornhaugh Street London WC1H 0XG

Drawing Title

Philips Building  
Corridor Door Types (Proposed) - Level 2, 3 & 4  
Sheet 1 of 2

Scale 1:20 @ A1

Date 09.10.2024

DO NOT SCALE FROM THIS DRAWING UNLESS USING THE SCALE BAR  
FOR IDENTIFICATION PURPOSES ONLY - NOT FOR CONSTRUCTION  
ALL DIMENSIONS TO BE CHECKED ON SITE AND USED  
IN PREFERENCE TO THOSE GIVEN OR SCALED FROM  
THIS DRAWING

Drawing N°

SOAS-PB-DT-PR-001

Revision letter

--	--	--	--	--	--	--	--