

Fire statement form

Application information	
1. Site address line 1	10 Pratt Mews
Site address line 2	
Site address line 3	
Town	Camden
County	London
Site postcode (optional)	NW1 0AD
2. Description of proposed development including any change of use (as stated on the application form):	<p>ERECTION OF ROOF EXTENSION TO CREATE SECOND FLOOR LEVEL, WITH ASSOCIATED INSTALLATION OF ROOFLIGHTS AND ALTERATIONS TO REAR ELEVATION.</p> <p>THERE IS NO CHANGE OF USE</p>
<p>3. Name of person completing the fire statement (as section 15.), relevant qualifications and experience.</p> <p>Guide: no more than 200 words</p>	<p>Full Name: Gerry McGee</p> <p>Current Position at Avondale Construction Limited: Construction Director</p> <p>Qualification:</p> <ul style="list-style-type: none"> Fellow Member of Chartered Institute of Building (FCIOB) Understanding of CDM regulations <p>Experience:</p> <ul style="list-style-type: none"> Senior professional with more than 40 years of experience within Construction Industry Provide a lead role in the Pre-construction, Tendering, Business development, and Operational delivery. Oversee, Promote and maintain all aspects of Health and Safety protocols on construction site, including site inspection and adherence to building and safety regulations and HSE rules and compliance. Analyse, manage and mitigate risks on construction projects. Prevent and manage challenges including crises and disagreements that occur on the construction sites. Hire and manage a project team including construction staff. Review the work progress regularly incl. site visits and Director Audits Manage communication between Clients, Contractors, Subcontractors, Architects, Planners, Consultants, Supervisors, Quantity surveyors and other specialists

<p>4. State what, if any, consultation has been undertaken on issues relating to the fire safety of the development; and what account has been taken of this.</p> <p>Guide: no more than 200 words</p>	<p>Yes, we are consulting with regards to fire escape, allocation of fire points / Extinguishers, Fire escape signage, Fire alarm system, Inspection and testing of systems, Fire assembly point, Fire Tender access and requirements, Use of fire-resistant material like Fire doors, Fire rated plasterboard partitions and ceilings.</p>
---	---

5. Site layout plan with block numbering as per building schedule referred to in 6.
(consistent with other plans drawings and information submitted in connection with the application)

Site layout plan is:
inserted in the form

The principles, concepts and approach relating to fire safety that have been applied to the development

6. Building schedule

Site information				Building information			Resident safety information		
a) block no. as per site layout plan above	b) • block height (m) • number of storeys excluding those below ground level • number of storeys including those below ground level	c) proposed use (one per line)	d) location of use within block by storey	e) standards relating to fire safety/ approach applied	f) balconies	g) external wall systems	h) approach to evacuation	i) automatic suppression	j) accessible housing provided
Block no. is 10 Pratt Mews.	block height (m): 9.5 Meter	Office use throughout the building	Whole building will be used for	Approved document B vol 2	no balconies	class A2-s1, d0 or better	simultaneous	none	N/A non resi

			Commercial office use only by one company						
	number of storeys excluding those below ground level: Three.	office, research and development		Choose an item.	Choose an item.	Choose an item.	Choose an item.	Choose an item.	Choose an item.
	number of storeys including those below ground level: Three.	Choose an item.		Choose an item.	Choose an item.	Choose an item.	Choose an item.	Choose an item.	Choose an item.
		Choose an item.		Choose an item.	Choose an item.	Choose an item.	Choose an item.	Choose an item.	Choose an item.
		Choose an item.		Choose an item.	Choose an item.	Choose an item.	Choose an item.	Choose an item.	Choose an item.

7. Specific technical complexities

Explain any specific technical complexities in terms of fire safety (for example green walls) and/or departures from information in building schedule above

Guide: no more than 500 words

None

8. Issues which might affect the fire safety of the development

Explain how any issues which might affect the fire safety of the development have been addressed.

Guide: no more than 500 words

We will maintain All standards relating to Approved document B vol 2. There will be no issues which will affect the fire safety of the development.

9. Local development document policies relating to fire safety

Explain how any policies relating to fire safety in relevant local development documents have been taken into account.

Guide: no more than 500 words

None as the surrounding area is developed.

Emergency road vehicle access and water supplies for firefighting purposes

10. Fire service site plan

Explanation of fire service site plan(s) provided in 14. including what guidance documents have informed the proposed arrangements for fire service access and facilities?

Guide: no more than 200 words

Nearest Fire Hydrant location is outside no. 4 Pratt Street as shown in Image below.

Guidance document: <https://dataservices.riscauthority.co.uk/map/index>

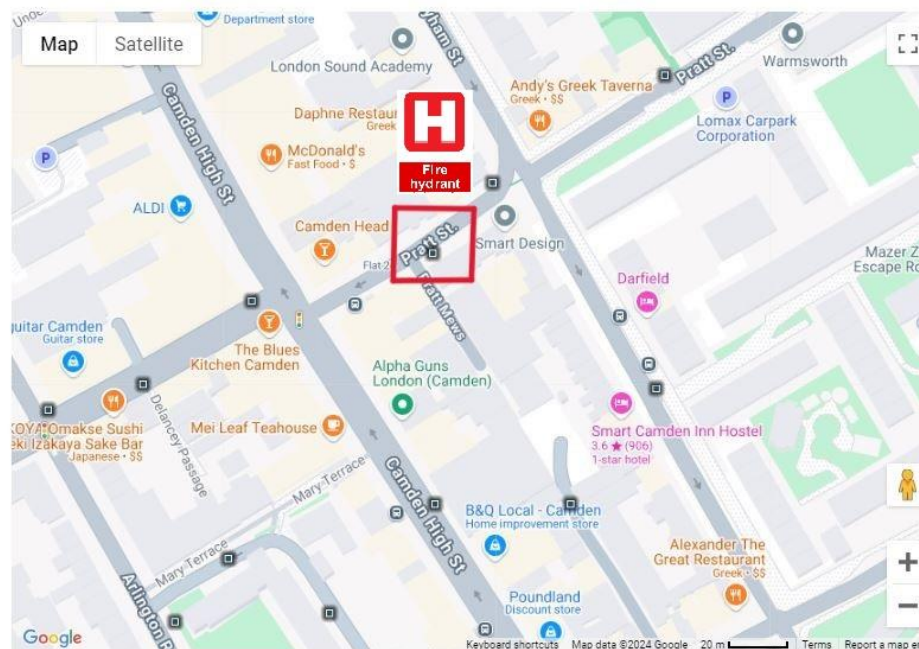


Hydrant Mapping Tool

Enter a postcode or partial postcode in the box below and press "Show Hydrants" to display them on the map. You need to include postcode spaces, however, if you wish to limit search to exact postcode district include a hyphen at the end of the district e.g. for N1 write N1-. There is a maximum limit of 5000 hydrants.

[Show Hydrants](#)

2462 hydrant(s) found.
[Clear Markers](#)



11. Emergency road vehicle access

Specify emergency road vehicle access to the site entrances indicated on the site plan

Guide: no more than 200 words

Pratt Mews

Is the emergency vehicle tracking route within the site to the siting points for appliances clear and unobstructed?
yes

12. Siting of fire appliances

Guide: no more than 200 words

Fire appliances can be sited either outside 4 Pratt Street for Fire Hydrants and / or on 10 Pratt Mews property

13. Suitability of water supply for the scale of development proposed

Guide: no more than 200 words


Standard water supply pressure from the Fire Hydrant is suitable for fire services

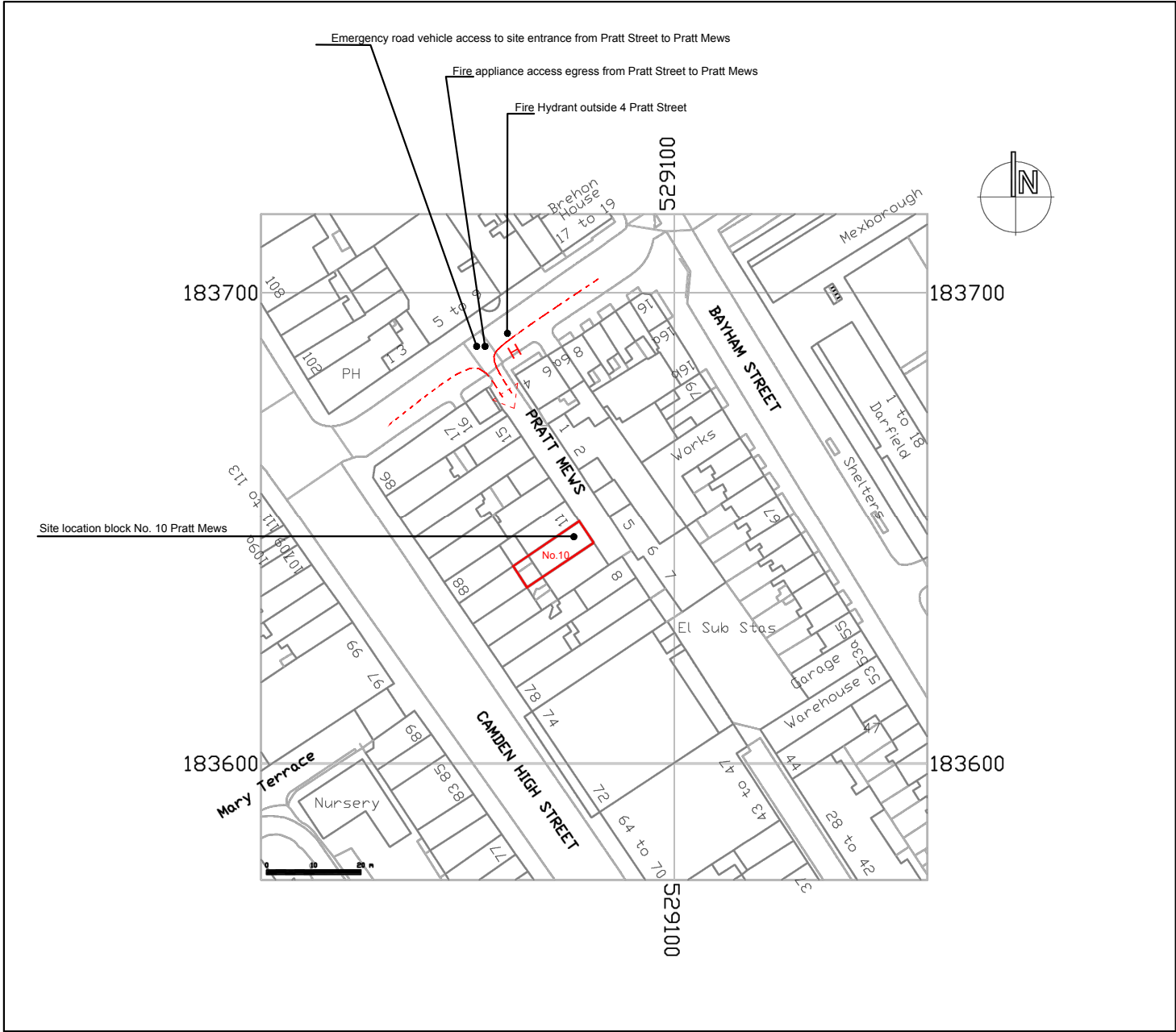
Nature of water supply:
hydrant- public

Does the proposed development rely on existing hydrants and if so are they currently usable / operable?
yes

14. Fire service site plan

Fire service site plan is:
inserted in the form

Fire statement completed by	
15. Signature	Gerry McGee 
16. Date	09/10/2024





Hydrant Mapping Tool

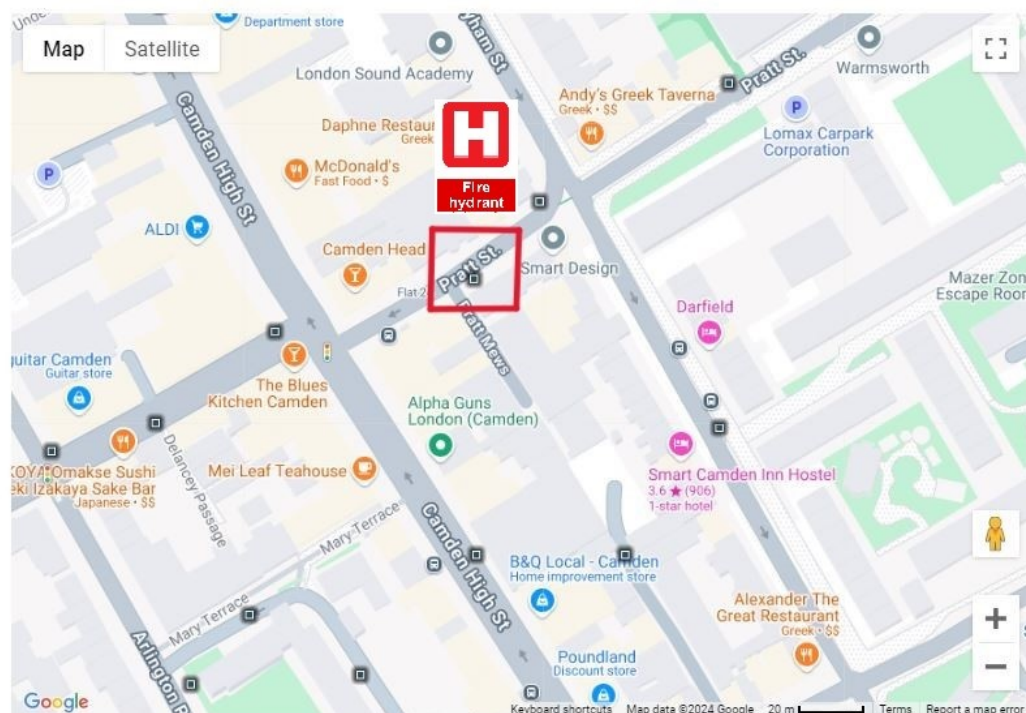
Enter a postcode or partial postcode in the box below and press "Show Hydrants" to display them on the map. You need to include postcode spaces, however, if you wish to limit search to exact postcode district include a hyphen at the end of the district e.g. for N1 write N1-. There is a maximum limit of 5000 hydrants.

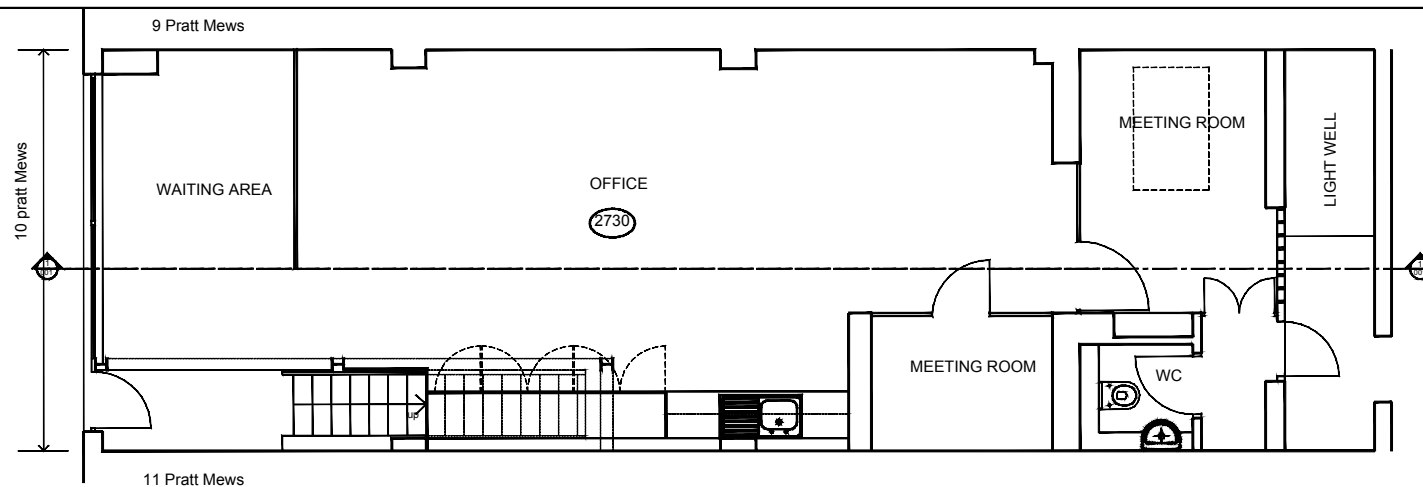
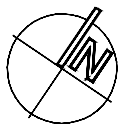
Show Hydrants

NW1

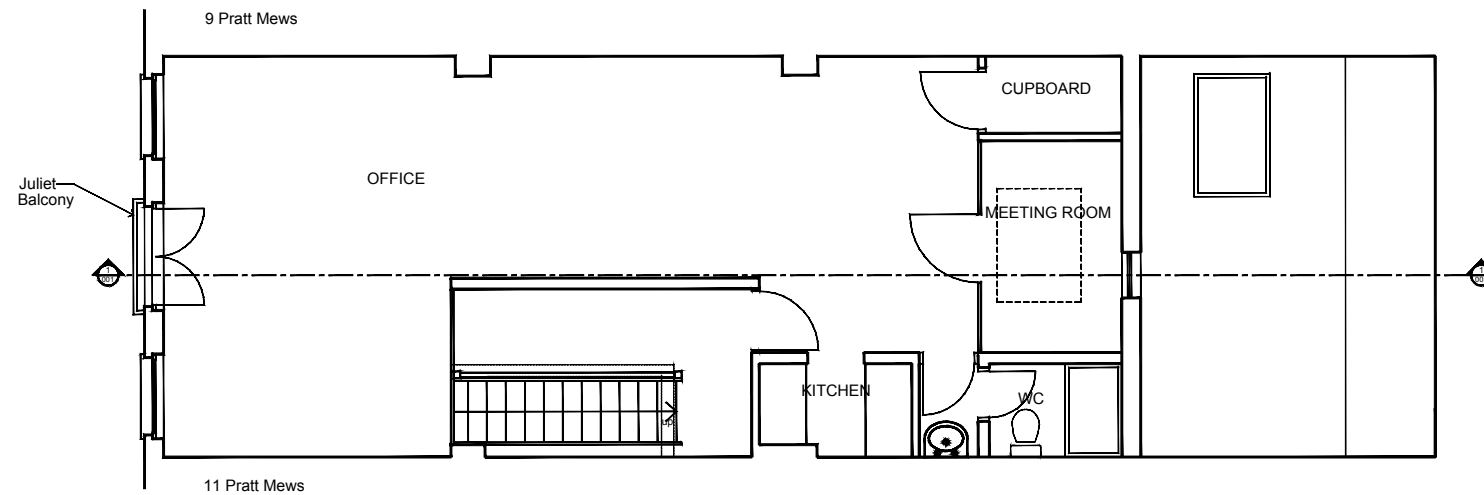
2462 hydrant(s) found.

Clear Markers

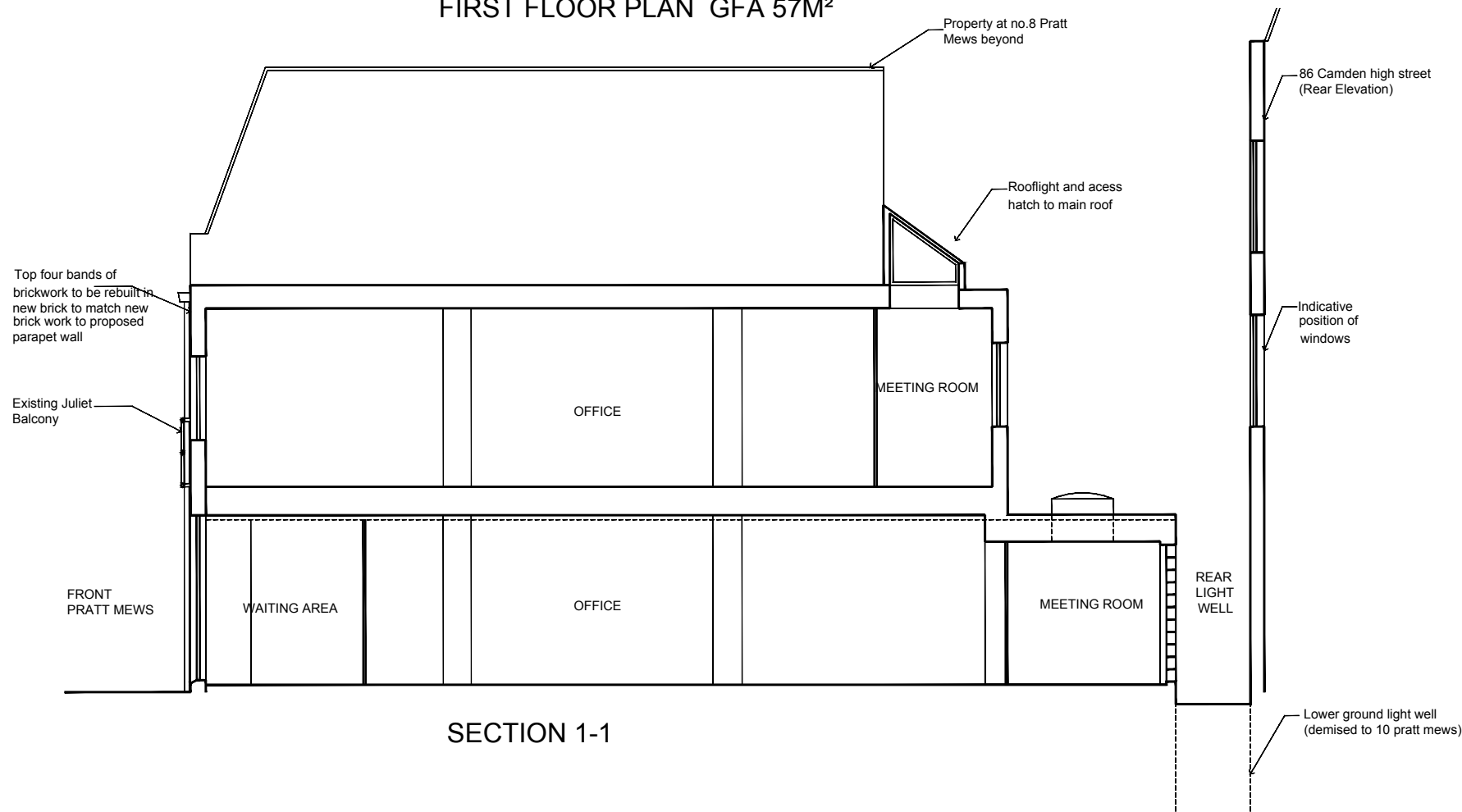








GROUND FLOOR PLAN GFA 75.7M²



FIRST FLOOR PLAN GFA 57M²



SECTION 1-1

<div><div>Studio Basheva ARCHITECTURE</div><div>39 Fairfax Road London NW6 4EL www.studiobasheva.com info@studiobasheva.com T +44 (0)208 133 7125</div></div> <div> RIBA  RTPI </div>	10 Pratt Mews		I.P.M. PERSONAL PENSION TRUSTEES LIMITED	
	Existing plans and section through			
	1: 100 @ A3	Sep 2024	KB	2403_P_EX_P_S_01
	© copyright Studio Basheva, all rights reserved			

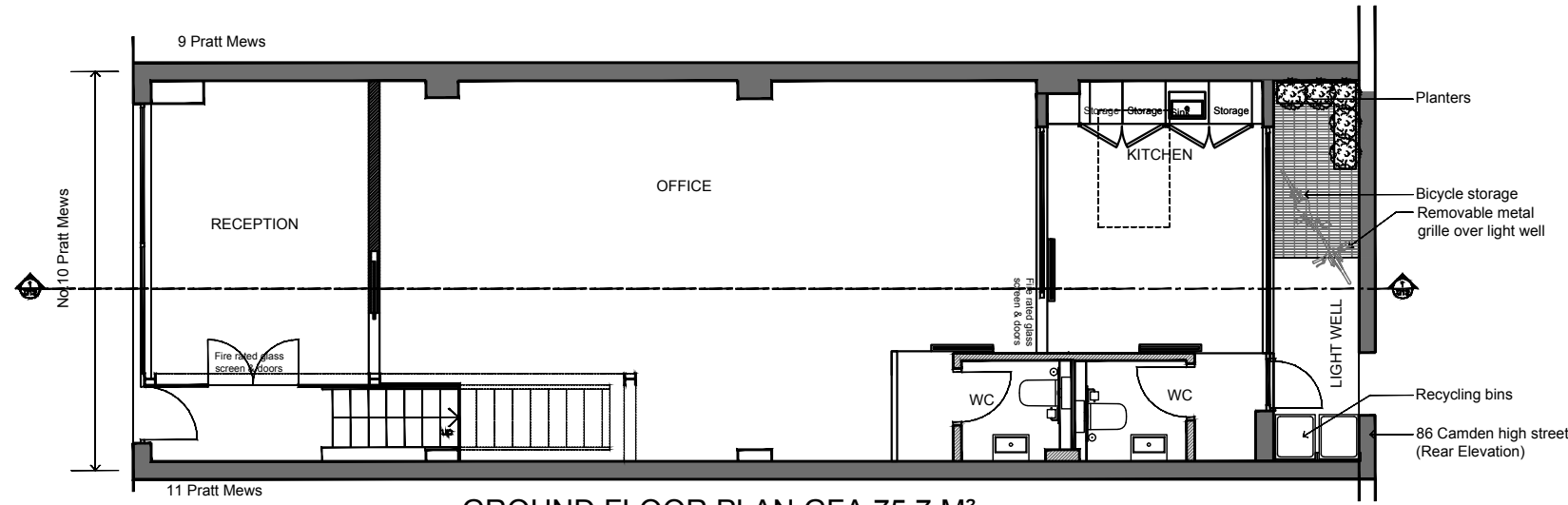
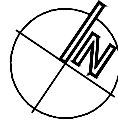
Revision	Date	Notes
-	20.09.2024	KB Planning Application

PLANNING

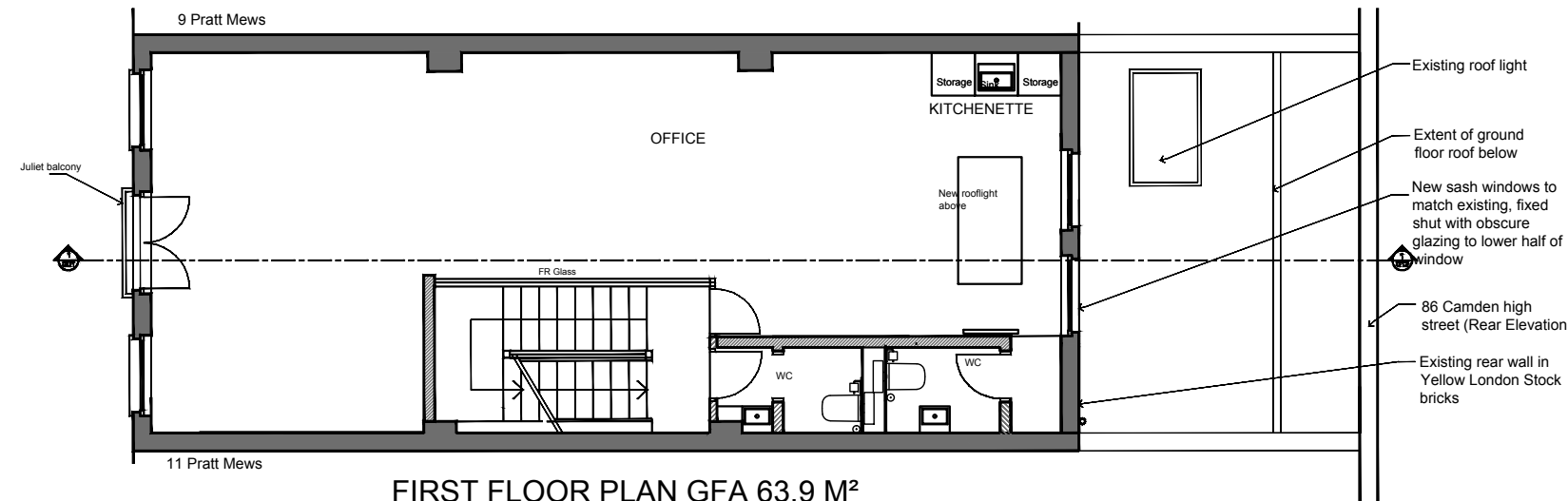
Drawing Status:
Unless otherwise stated, this drawing is for INFORMATION ONLY
All dimensions should be checked on site.

1 m 2 m 5 m

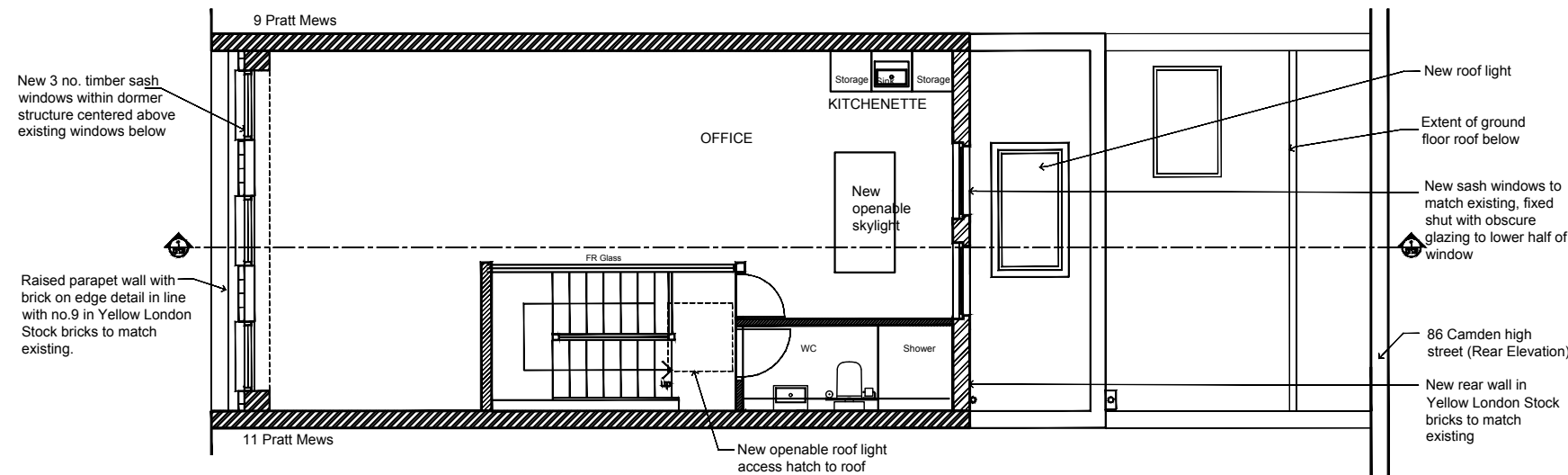
SCALE 1: 100 @ A3



GROUND FLOOR PLAN GFA 75.7 M²



FIRST FLOOR PLAN GFA 63.9 M²



SECOND FLOOR PLAN GFA 53 M²