

DATA SHEET

[www.environgroup.uk](http://www.environgroup.uk)

**EG-U156-FJ13**

**24 September 2024**

Acoustic enclosure for AC Split Systems

CUSTOMER: <b>Quantum Acoustics</b>	SITE / LOCATION / REFERENCE <b>TBC</b>
---------------------------------------	---

**ORIGINAL EQUIPMENT MANUFACTURERS PUBLISHED DATA**  
MAKE, MODEL, DIMENSIONS, AIR FLOW & SOUND PRESSURE LEVEL @1.0M FREE FIELD

MAKE			MODEL			AIR IN		AIR OUT
<b>Fujitsu</b>			<b>AOYG18KBTA2</b>			<b>H - 2 Side</b>		<b>H - Front</b>
WIDTH (MM)	DEPTH (MM)	HEIGHT (MM)	AIRFLOW (M <sup>3</sup> S <sup>-1</sup> )			DISTANCE (M)		SPW dB(A)
<b>940</b>	<b>375</b>	<b>692</b>	<b>0.561</b>			<b>1</b>		<b>50</b>
INNER CUBE DIMENSION			ENCLOSURE DETAIL					
WIDTH (MM)	DEPTH (MM)	HEIGHT (MM)	WIDTH (MM)	DEPTH (MM)	HEIGHT (MM)			
<b>1050</b>	<b>450</b>	<b>880</b>	<b>1650</b>	<b>950</b>	<b>945</b>			
AIRFLOW (M <sup>3</sup> S <sup>-1</sup> )	DISTANCE (M)	SPL dB(A)	AIRFLOW (M <sup>3</sup> S <sup>-1</sup> )	DISTANCE (M)	SPL dB(A)			
<b>0.56</b>	<b>1.0</b>	<b>50</b>	<b>0.56</b>	<b>1.0</b>	<b>24</b>			
INLET AIRWAYS			DESIGN CRITERIA					
WIDTH (MM)	HEIGHT (MM)	NO.	UNIT SIZE	INTLET	OUTLET			
<b>225</b>	<b>880</b>	<b>1</b>	<b>OK</b>	<b>OK</b>	<b>OK</b>			
OUTLET AIRWAYS			AIRFLOW INFORMATION					
WIDTH (MM)	HEIGHT (MM)	NO.	PD (NM <sup>2</sup> )	INLET (MS <sup>-1</sup> )	OUTLET (MS <sup>-1</sup> )			
<b>225</b>	<b>880</b>	<b>1</b>	<b>10</b>	<b>2.8</b>	<b>2.8</b>			

**ENCLOSURE INFORMATION**

INLET AIRWAY  
OUTLET AIRWAY  
EXTERNAL SIZE  
INDICATIVE NOISE LEVEL

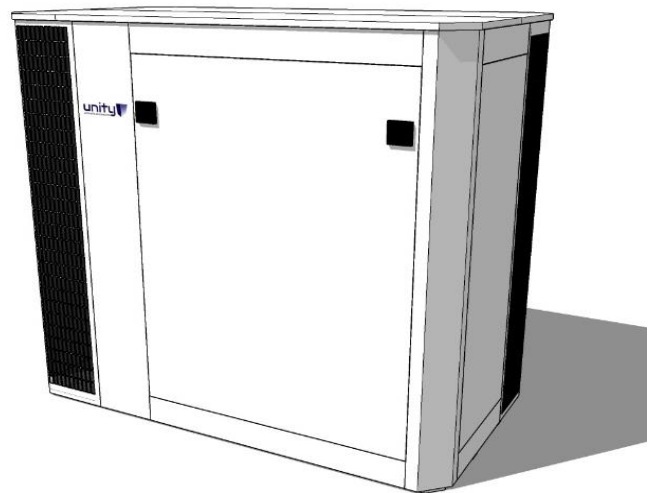
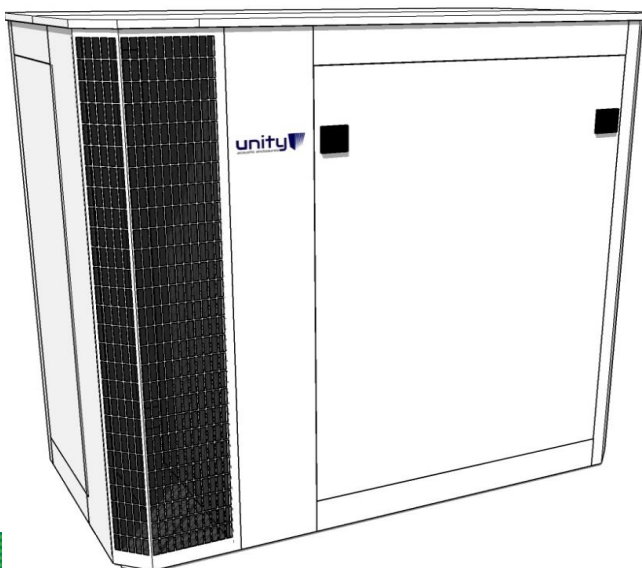
WIDTH (MM)	DEPTH (MM)	HEIGHT (MM)
<b>225</b>		<b>880</b>
<b>225</b>		<b>880</b>
<b>1650</b>	<b>950</b>	<b>945</b>
<b>24</b>	<b>**SPW dB(A) SOUND PRESSURE</b>	

NOTES CONCERNING ENCLOSURE DESIGN

**\*\*Minimum Space Required in front of airways - 300mm\*\***

Unity Access Panels Lift Off or Hinged for Maintenance/Service

\*\* Noise level above based on Free Field condition - actual noise levels will be dependant on site conditions

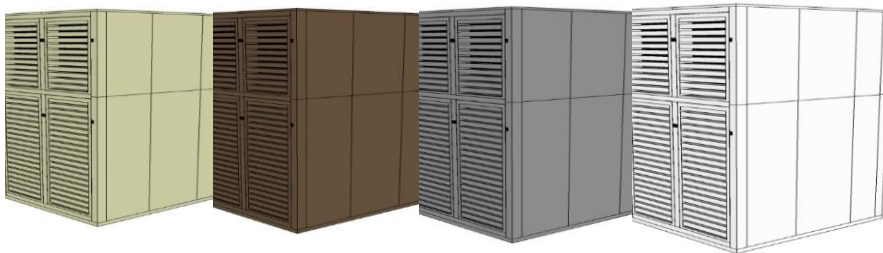


**DATA SHEET**

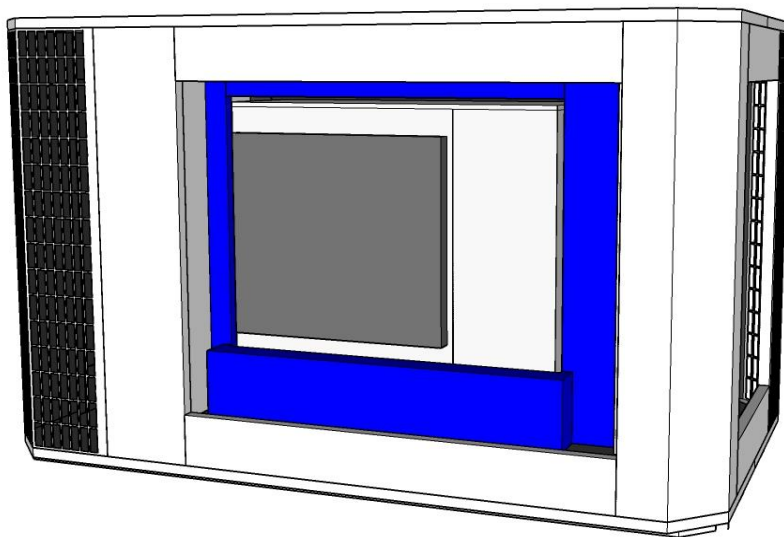
**EG-U156-FJ13**

Acoustic enclosure for AC Split Systems

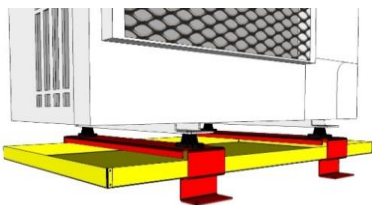
**24 September 2024**



**Exterior Colour**  
Any RAL/BS Colour  
Special Finishes Available

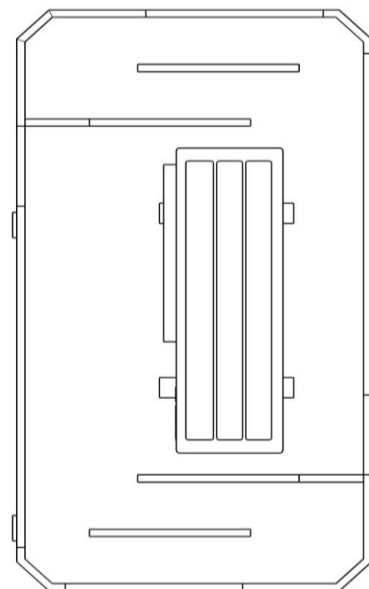


Service/Maintenance Access



OPTIONAL EXTRAS

- Anti Vibration Mounts
- Condensate Drain Pan
- Drain Pan Heater Tape
- Invisible' Wall Mounting Frame



Balanced Air Flow  
Internal Plenum Seals stop  
Air Recirculation

