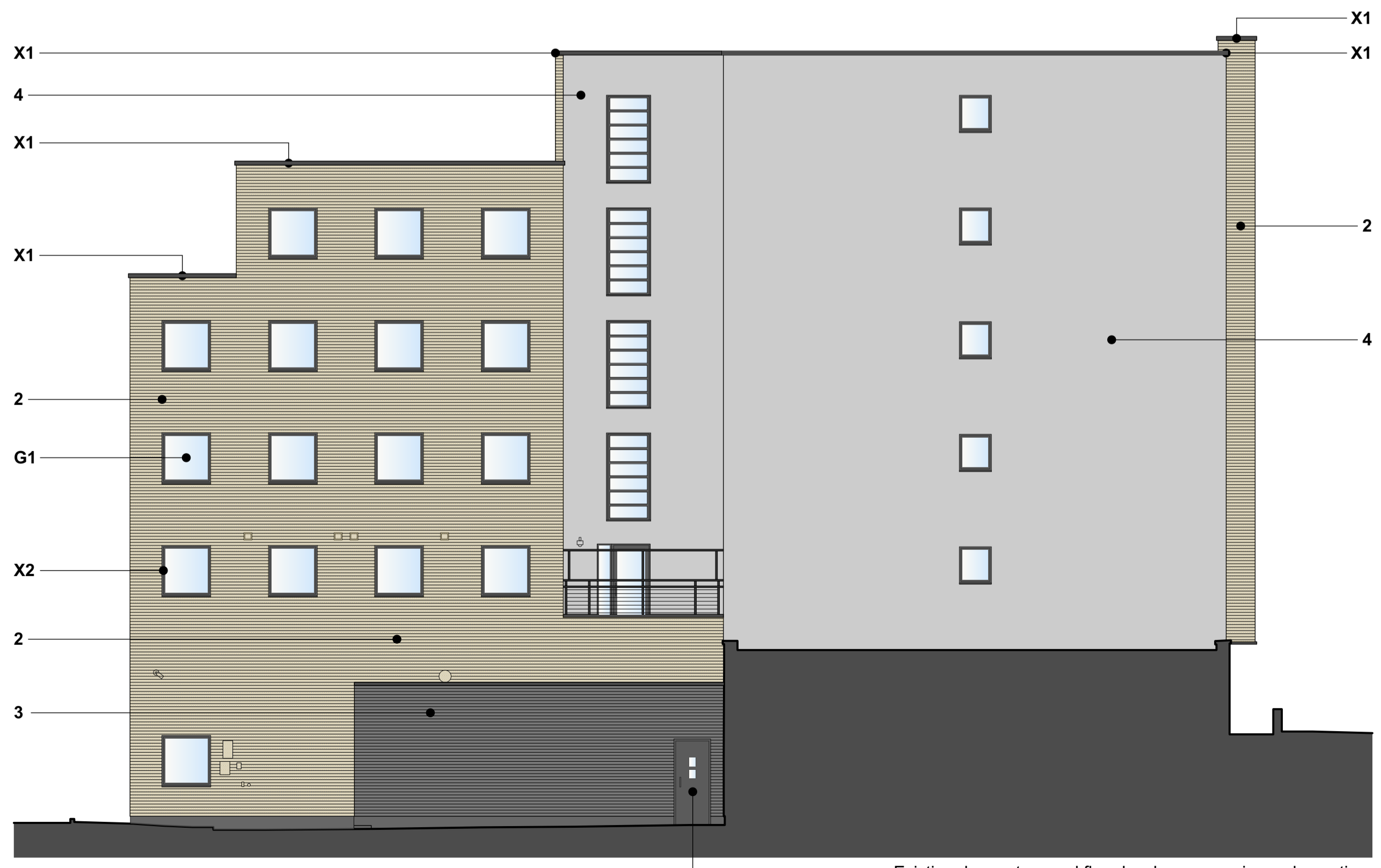
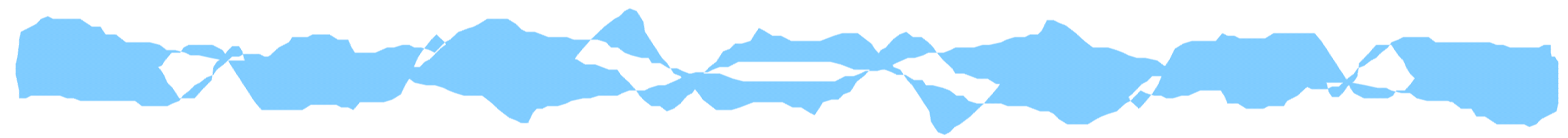
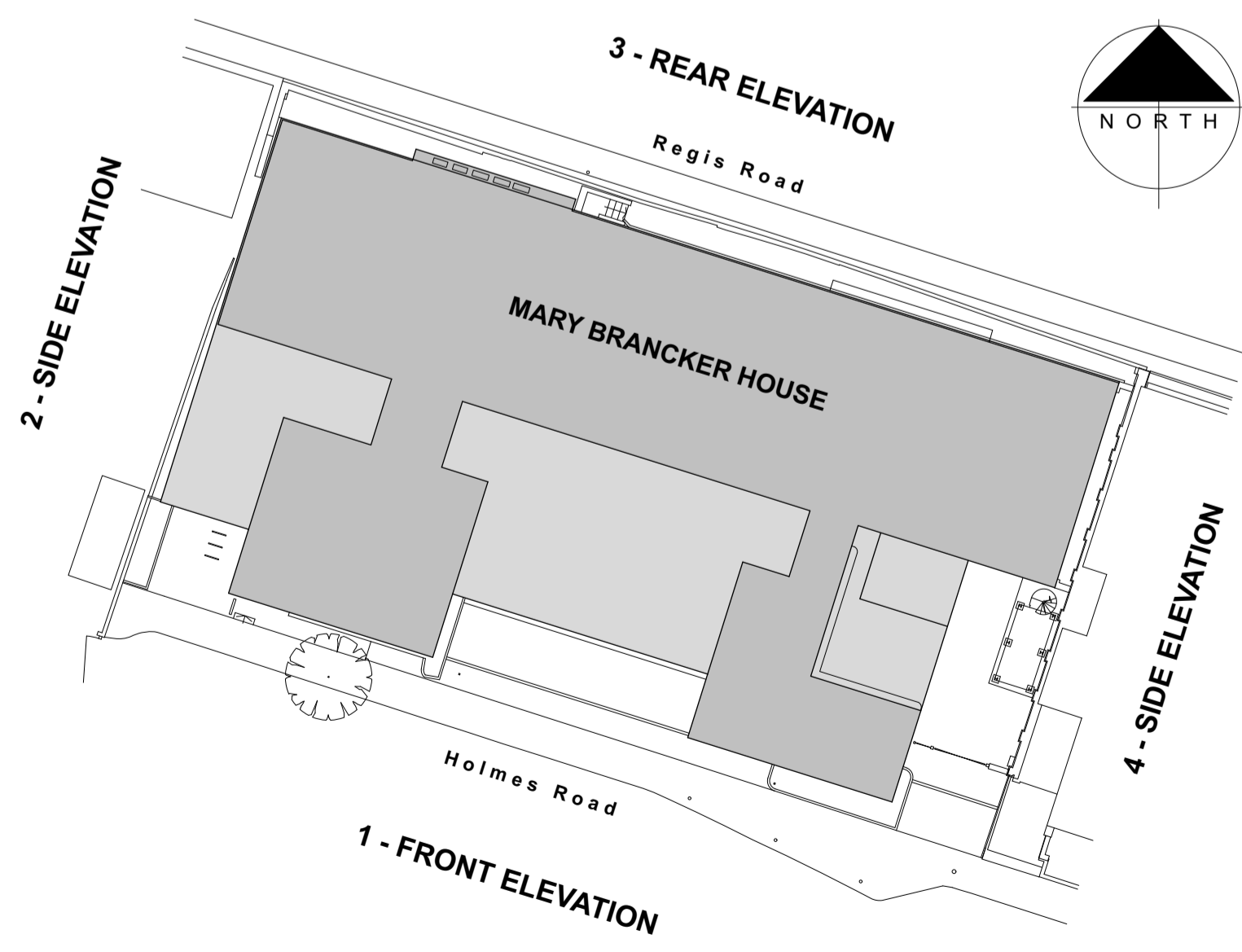


REAR ELEVATION - Regis Road.
Elevation E1.



SIDE ELEVATION.
Elevation E2.



KEY PLAN.

This drawing is the copyright of Axiom Architects. It is for planning application purposes only and may not be reproduced in whole or in part without permission. Drawings lodged for planning approval may be reproduced by the Planning Authority in accordance with the 'Copyright (Material Open to Public Inspection) (Marking of Copies of Plans and Drawings) Order 1990' and must carry the relevant copyright restriction note. Scaling from this drawing should only be carried out from a print at the scale and size specified within the title block. Responsibility for ensuring correct size reproduction remains with the reader.

DRAWING FOR ILLUSTRATIVE PURPOSES ONLY. SUBJECT TO SITE MEASUREMENT.

WALL TYPE / MATERIAL REFERENCES :

	WALL TYPE 1, (B1) FACE BLOCKWORK. RETAINED.
	WALL TYPE 2, (B2) MECH SLIP - BRICK SLIP. GOLDEN PURPLE.
	WALL TYPE 3, (B3) MECH SLIP - BRICK SLIP. EBONY BLACK.
	WALL TYPE 4, (R1) RENDER SYSTEM. GREY/GRAPHITE.

MATERIALS KEY :

- MASONRY** - Bricks laid in Stretcher bond, with natural mortar.
- 1: (B1) Existing Masonry blockwork walls at ground floor - RETAINED.
 - 2: (B2) BRICK SLIPS - Ibstock Mechslip, Golden Purple.
 - 3: (B3) BRICK SLIPS - Ibstock Mechslip, Ebony Black.
- RENDER.**
- 4: (R1) Silicone render system - colour option: Stone Grey/Graphite.
- WINDOW UNITS.**
- G1: Window frames and window glazing - RETAINED.
- MISCELLANEOUS.**
- X1: Parapet capping - Pressed Aluminium profile.
 - X2: 2mm PPC Aluminium feature channels / flashings / cover trims.

Rev	Date	Description	By	Chk
B	3.10.24	Elevational treatments updated.	dh	

AXIOM ARCHITECTS
1 Brooklands Yard Southover High Street Lewes East Sussex BN7 1HU
Tel. 01273 479434 www.axiomarchitects.co.uk

Client
M.CLARKE.

Project
UNITE STUDENTS, MARY BRANCKER HOUSE,
54-74 HOLMES ROAD,
LONDON, NW5 3AQ.

Drawing
PROPOSED ELEVATIONS.

Sheet 2 of 2.

Scale	Status	Date	Drawn	Checked
1:100 @ A1	PLANNING	21.5.24	dh	

Drawing No. **6233-P105** **Revision**

6233-P105 **B**