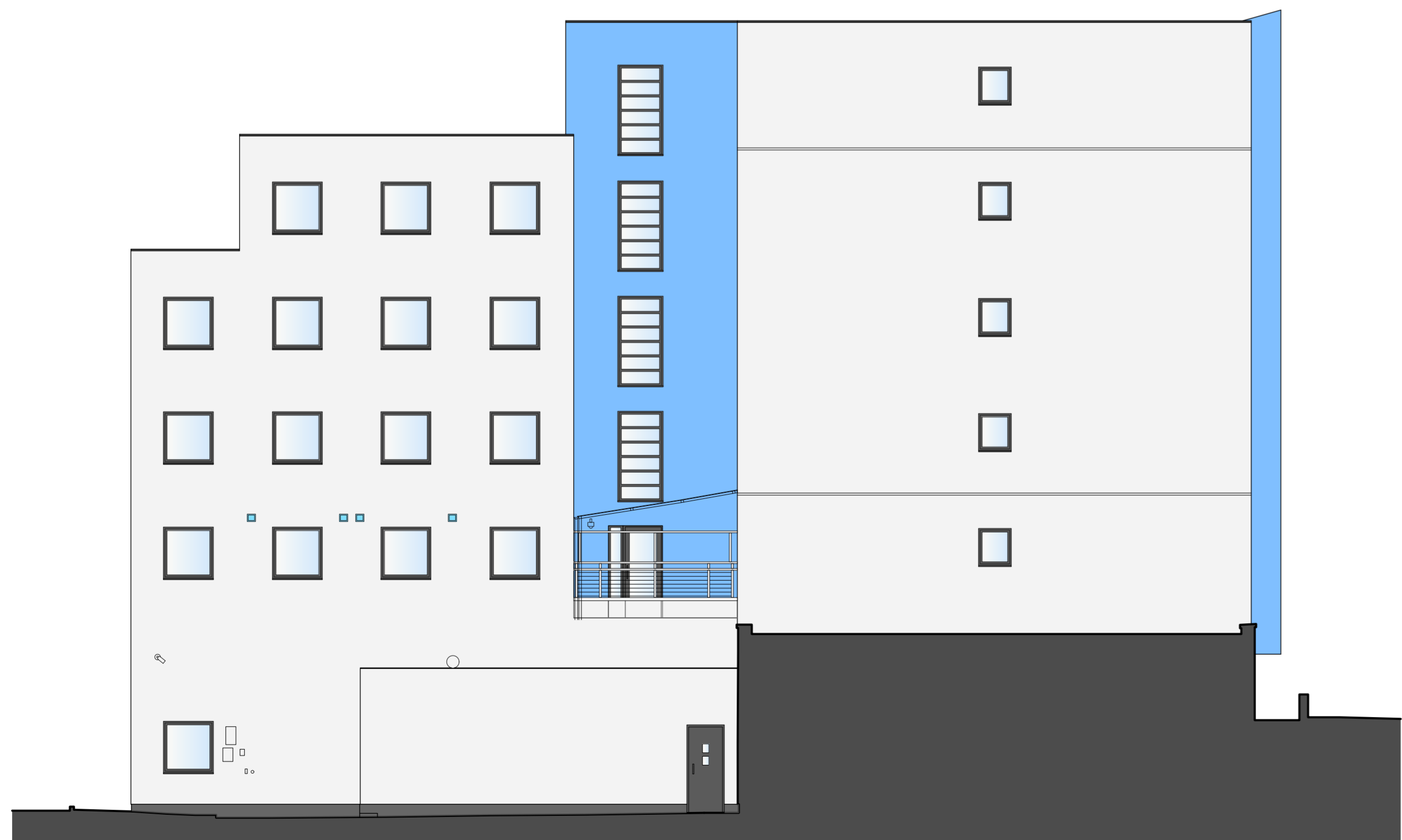


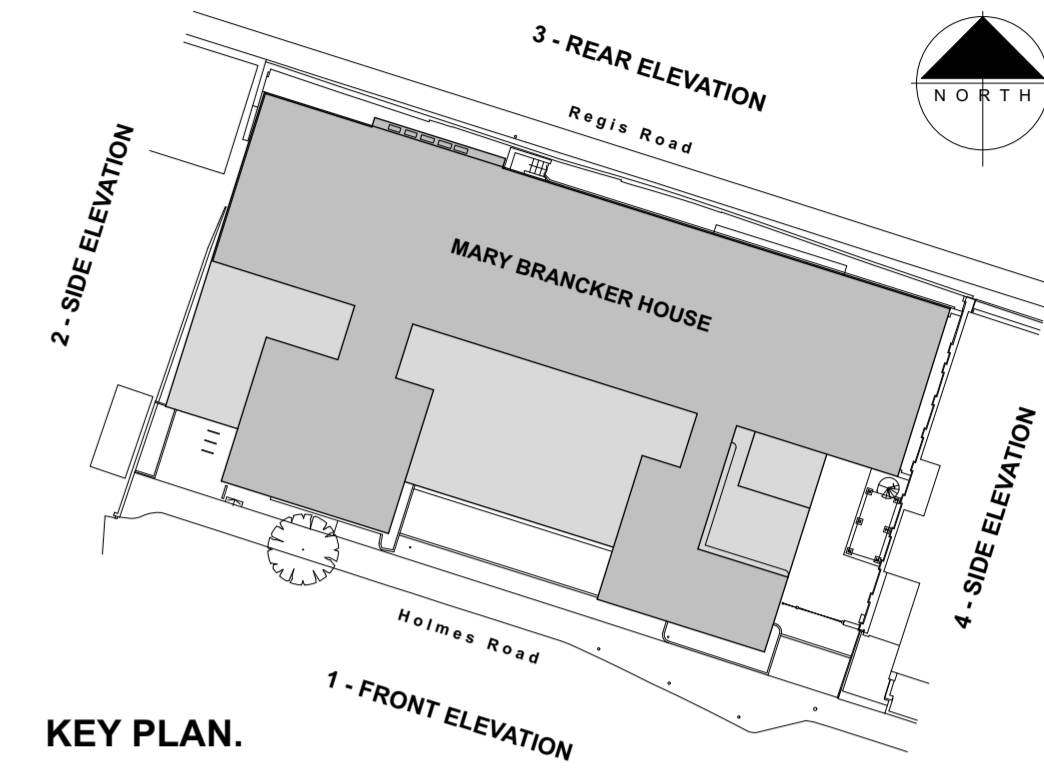
**3 - REAR ELEVATION - Regis Road.**  
Elevation E1.



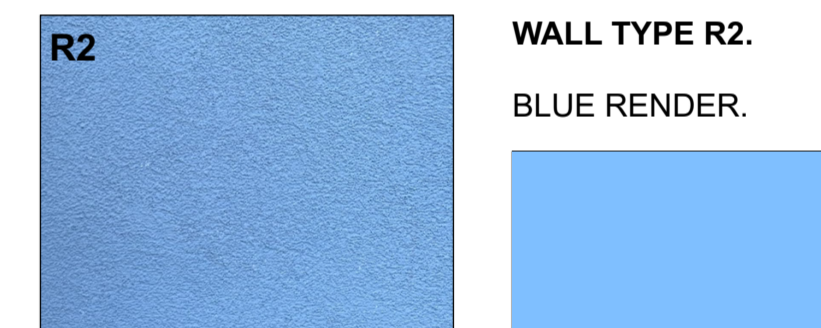
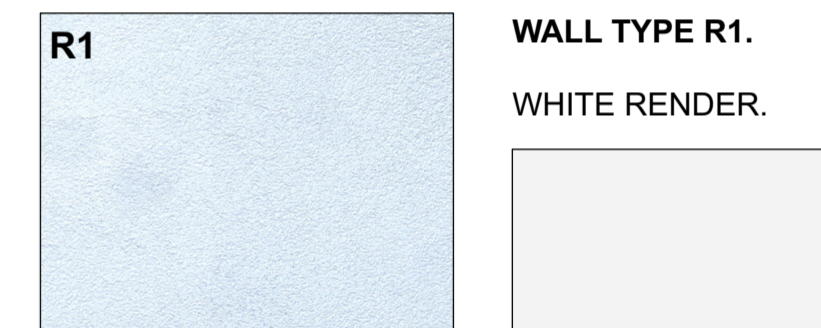
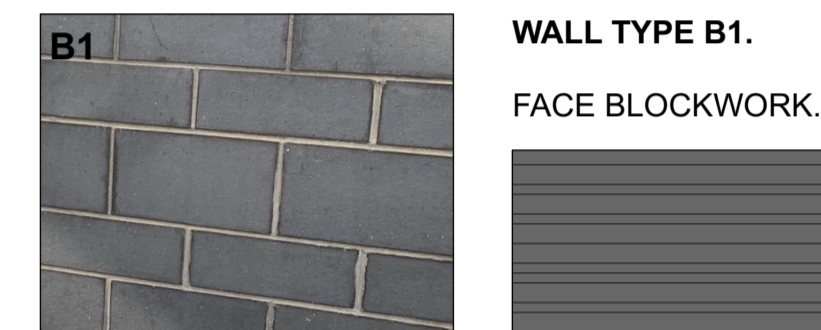
**4 - SIDE ELEVATION.**  
Elevation E2.

This drawing is the copyright of Axiom Architects. It is for planning application purposes only and may not be reproduced in whole or in part without permission. Drawings lodged for planning approval may be reproduced by the Planning Authority in accordance with the "Copyright (Material Open to Public Inspection) (Marking of Copies of Plans and Drawings) Order 1997" and must carry the relevant copyright restriction note. Scaling from this drawing should only be carried out from a print at the scale and size specified within the title block. Responsibility for ensuring correct size reproduction remains with the reader.

**DRAWING FOR ILLUSTRATIVE PURPOSES ONLY. SUBJECT TO SITE MEASUREMENT.**



**WALL TYPE / MATERIAL REFERENCES :**



Rev	Date	Description	By	Chk
-----	------	-------------	----	-----

**AXIOM ARCHITECTS**  
 1 Brooklands Yard Southover High Street Lewes East Sussex BN7 1HU  
 Tel. 01273 479434 www.axiomarchitects.co.uk

**Client**  
M. CLARKE.

**Project**  
UNITE STUDENTS, MARY BRANKER HOUSE,  
54-74 HOLMES ROAD,  
LONDON, NW5 3AQ.

**Drawing**  
EXISTING ELEVATIONS.

**Sheet 2 of 2.**

Scale	Status	Date	Drawn	Checked
1:100 @ A1	PLANNING	21.5.24	dh	
Drawing No.	Revision			

**6233-P101**