

IMPORTANT STATEMENT:
 All metalwork is part of EXC 2 in accordance with BS EN 1090-2 & BS EN ISO 15609
 - All design is to be checked & confirmed by the architect/main contractor and verified onsite before commencing any work.
 - This drawing is to be read in conjunction with all other relevant engineers' & architect's drawings & specifications for the project

FABRICATION TOLERANCES:
 Alignment +/- 2mm
 Hole ovalisation +/- 1mm
 Section deviation +/- 1mm over 1m span section
 Erection Tolerance for fabrication +/- 2mm
 Welding works to be as per welding procedure specification
 All finished items are to be part marked & stamped
 Always follow the instructions in manufacturer's installation spec.
 All sharp edges are to be removed before site installation

SITE TORQUE TOLERANCES:
 All tolerances noted are in accordance with BS EN 1090-2 D1
 Standard torque tolerance = 2mm
 M12 8.8; min torque = 88Nm
 M16 8.8; min torque = 90Nm
 M20 8.8; min torque = 110Nm
 M24 8.8; min torque = 88Nm
 Unless otherwise stated by the manufacturer

DESIGN LOADINGS:
 Railing barrier load = 0.74kN

MATERIALS:

- Support Posts - 50x10mm Flat Bar, S275JR
- Infill Panel Perimeter Rail - 50x8mm Flat Bar, S275JR
- Panel Infills - 40x8mm Flat Bar, S275JR
- Gate Support Posts - 80x8 SHS, S235JR
- Gate Perimeter Frame - 80x40x4 RHS, S235JR
- Gate Infills - 50x8mm Flat Bar, S275JR
- Posts Caps & Hinge Covers - 3mm Plate, S275JR

FIXINGS & FITTINGS:

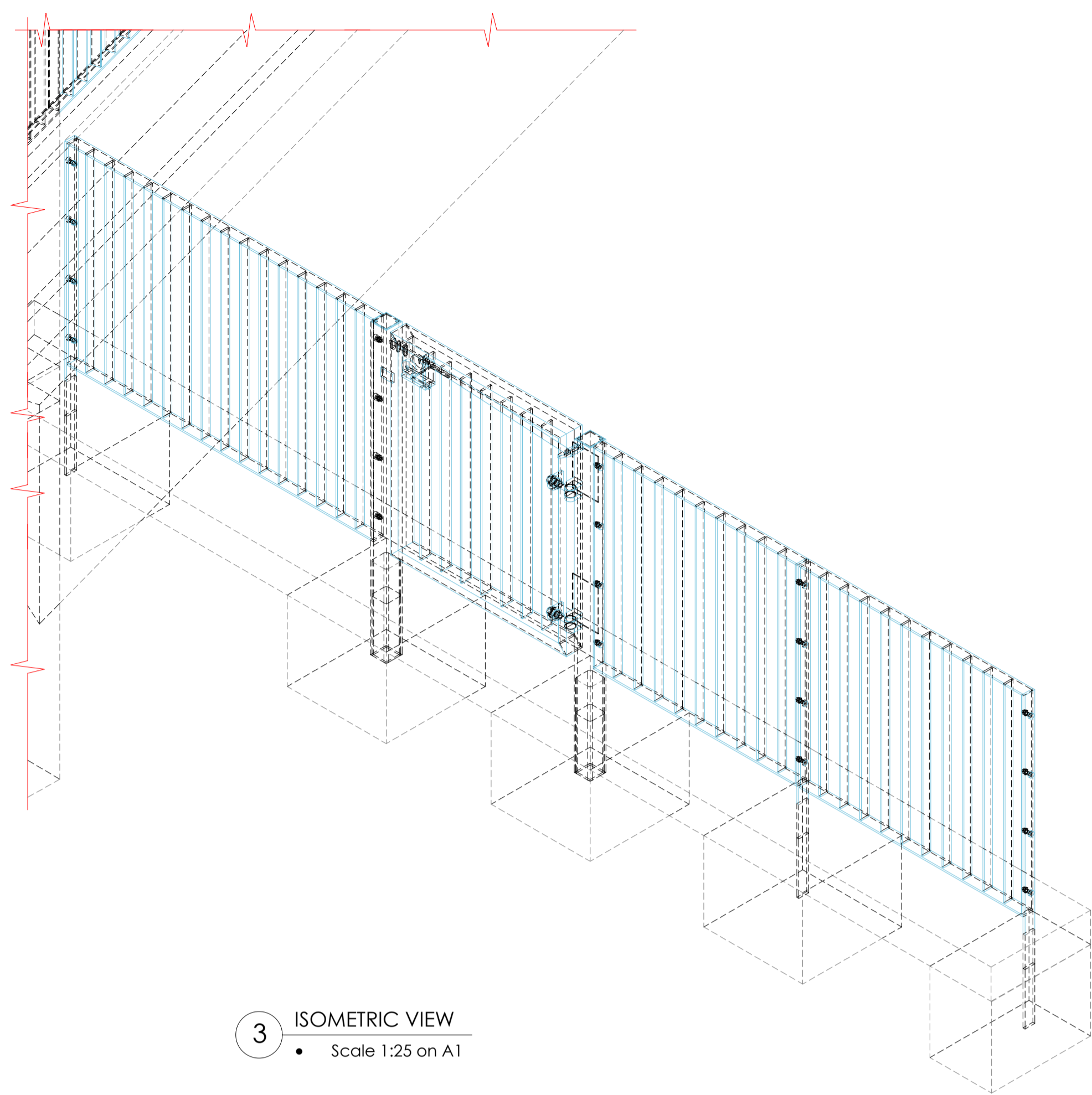
- Hinges - BRUNDELE weld-on hinges
- Drop Bolt - BRUNDELE weld-on 530mm drop bolt (anti-vandal)
- Gas Strut - weld-on item
- Maglock Infill Panel to Post Conn - M10x35 Pan Head fixing, SS
- Post Base Conn - dig & concreted in to -410mm from FFL

FINISHES:

- Steel elements to be Primer powder coating followed by PPC to RAL 9010 (Pure White), Matt Glass +/- 30%

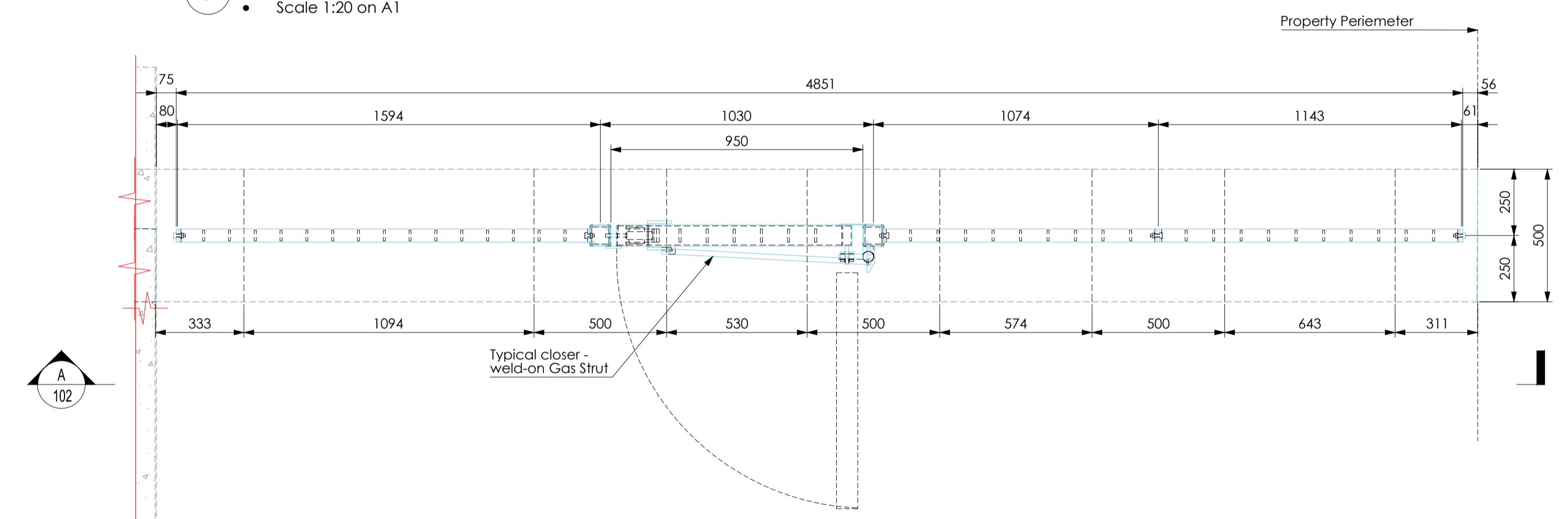
DRAWING REFERENCES:

- Landscape Architect: 246A-310-123

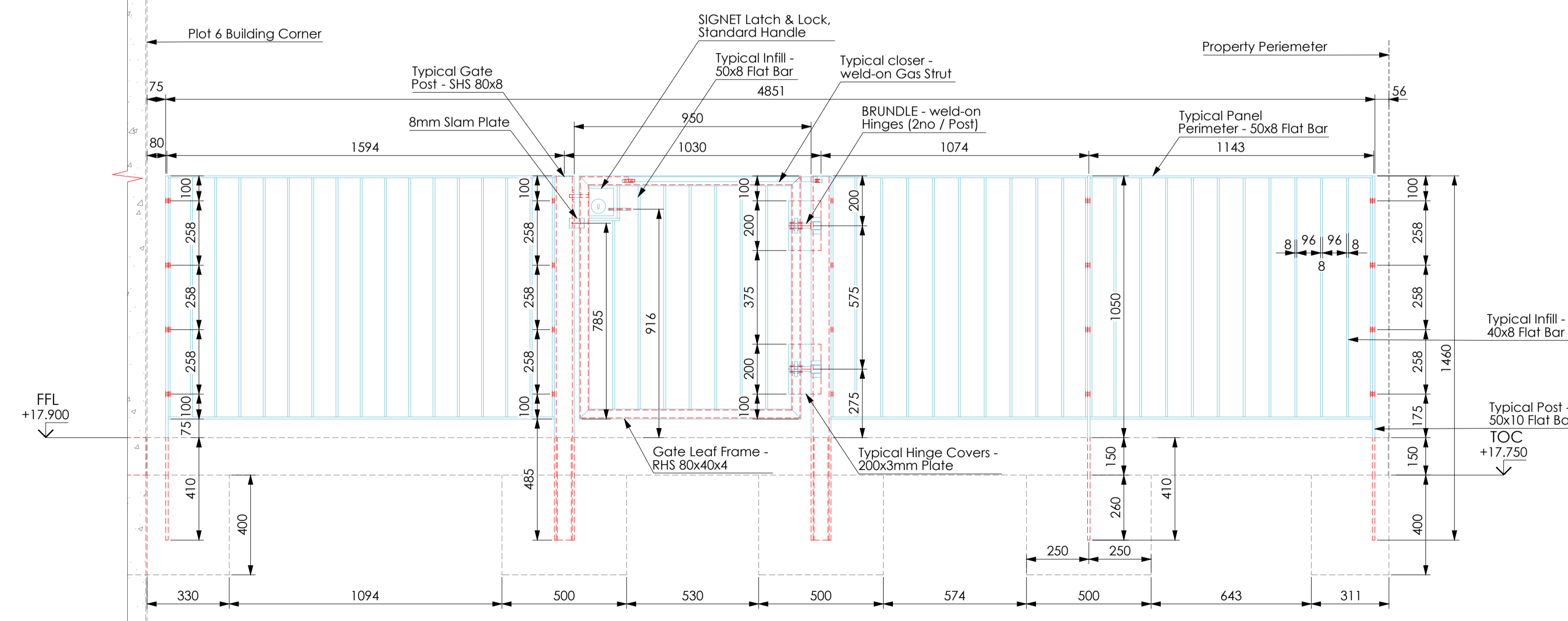


3 ISOMETRIC VIEW
 • Scale 1:25 on A1

1 PLAN LAYOUT
 • Scale 1:20 on A1



2 ELEVATION 'AA'
 • Scale 1:20 on A1



Approval

P01	Initial Issue - Status 2	CD	22.08.24
REV	Reason for Issue	Drawn	Date



Project: **CENTRAL SOMERS TOWN**

Drawing Title:
ARCHITECTURAL METALWORK - Plot 6 Adjacent Garden Railings Typical Details

Drawn By: CMD Scale: N/A Dwg Size: A1 Date: 22/08/2024

Drawing Status: **2 - FOR REVIEW & COMMENTS** Revision: **P01**

DWG No: **54CB02-CRD-XX-UGF-DR-X-0004** If in doubt ask

This drawing is the property of PC Cooney and should not be copied or reproduced without PC Cooney's consent