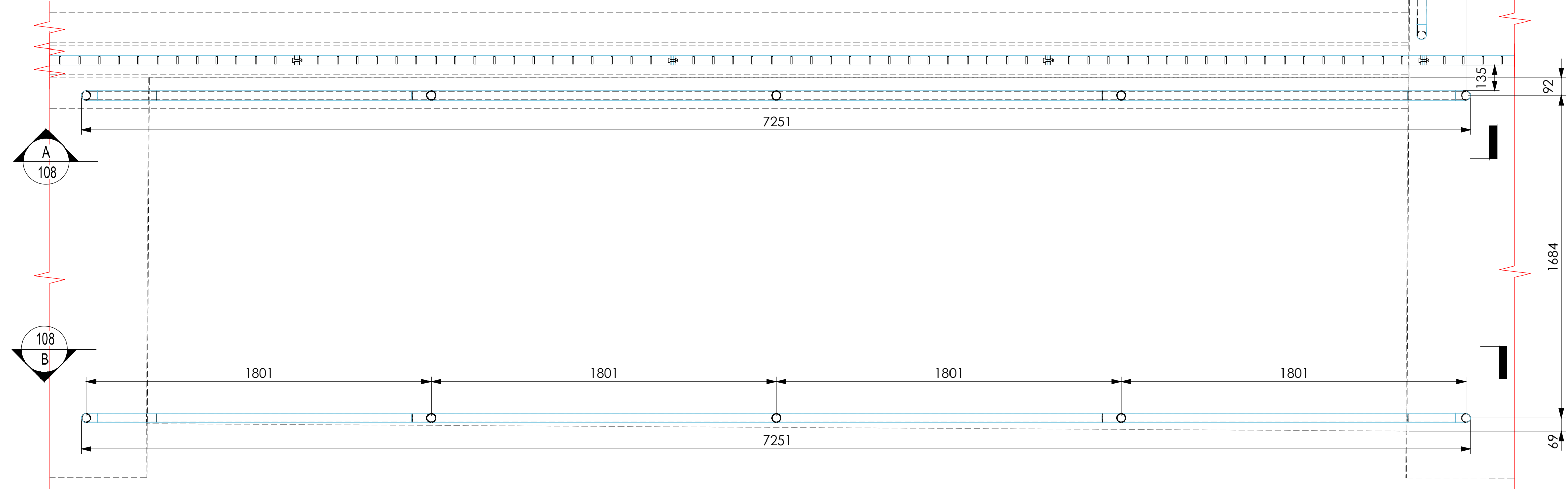
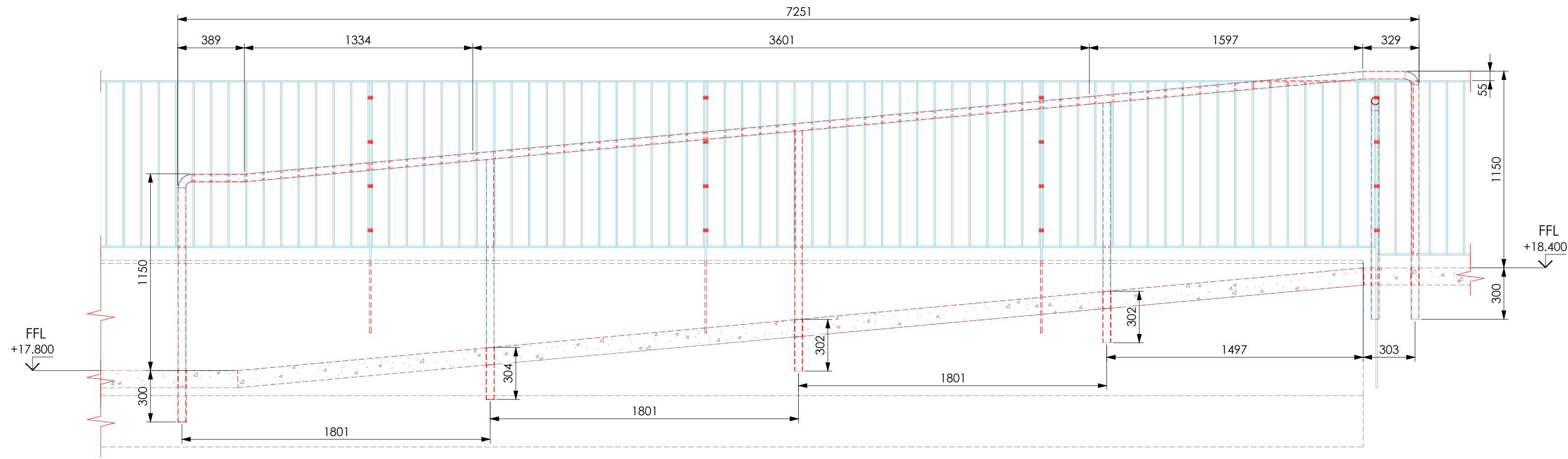


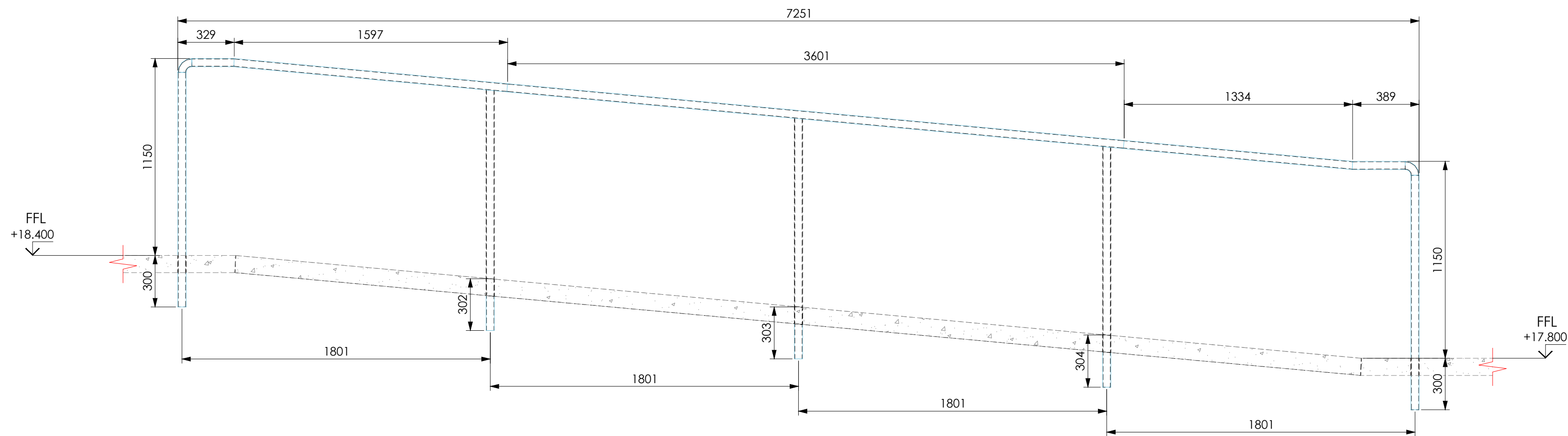
3 ISOMETRIC VIEW
• Scale 1:15 on A1



1 PLAN LAYOUT
• Scale 1:15 on A1



2 ELEVATION 'AA'
• Scale 1:15 on A1



3 ELEVATION 'BB'
• Scale 1:15 on A1

IMPORTANT STATEMENT:

All metalwork is part of EXC 2 in accordance with BS EN 1090-2 & BS EN ISO 15609
- All design is to be checked & confirmed by the architect/main contractor and verified onsite before commencing any work.
- This drawing is to be read in conjunction with all other relevant engineer's & architect's drawings & specifications for the project

FABRICATION TOLERANCES:

Alignment +/- 2mm
Hole ovalisation +/- 1mm
Section deviation +/- 1mm over 1m span section
Erection Tolerance for fabrication +/- 2mm
Welding works to be as per welding procedure specification
All finished items are to be part marked & stamped
Always follow the instructions in manufacturer's installation spec.
All sharp edges are to be removed before site installation

SITE TORQUE TOLERANCES:

All tolerances noted are in accordance with BS EN 1090-2 D1
Standard torque tolerance = 2mm
M12 8.8: min torque = 88Nm
M16 8.8: min torque = 90Nm
M20 8.8: min torque = 110Nm
M24 8.8: min torque = 88Nm

Unless otherwise stated by the manufacturer

DESIGN LOADINGS:

Railing barrier load = 0.74kN

MATERIALS:

- Handrails & Posts - Ø48.3x3mm CHS. S275JR

FIXINGS & Fittings:

- Post Base Conn - dig & concreted in to -300mm & -450mm from FFL

FINISHES:

- Steel elements to be Primer powder coating followed by PPC to RAL 9010 (Pure White), Matt Glass +/- 30%

DRAWING REFERENCES:

- Landscape Architect: 246A-310-119

Approval

P01	Initial issue - Status 2	CD	22.08.24
REV	Reason for Issue	Drawn	Date

Client:

**MORGAN
SINDALL**

Project: CENTRAL SOMERS TOWN

Drawing Title:
ARCHITECTURAL METALWORK - Ramp Handrails
Typical Details

Drawn By: CMD Scale: N/A Dwg Size: A1 Date: 22/08/2024

Drawing Status: 2 - FOR REVIEW & COMMENTS Revision: P01

DWG No: 54CB02-CRD-XX-UGF-DR-X-0007
If in doubt ask

This drawing is the property of PC Cooney and should not be copied or reproduced without PC Cooney's consent