

# RADISSON BLU HOTEL

2817 mm

4200 mm Area Available

175 mm

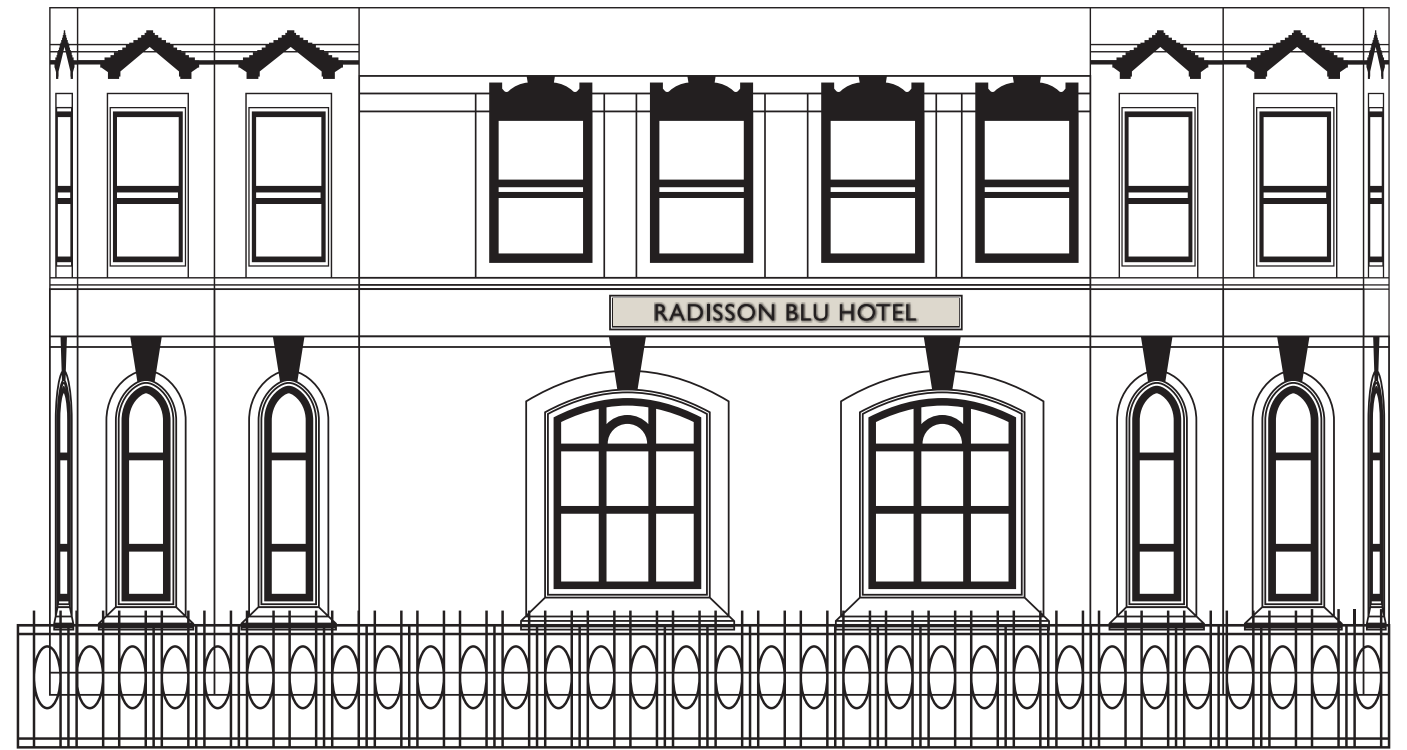
300 mm Area Available

**EX04 - SIDE LOGO (BLOOMSBURY ST)**  
BUILT-UP FLAT FACES 0.9MM BRUSHED STAINLESS STEEL P/C RAL 9005 WITH 40MM DEEP RETURNS AND FITTED WITH 10MM WHITE FOAMEX BACKTRYS.  
SCALE 1:20 @A3





EXISTING ELEVATION (BLOOMSBURY ST)  
SCALE 1:80 @A3



PROPOSED ELEVATION (BLOOMSBURY ST)  
SCALE 1:80 @A3