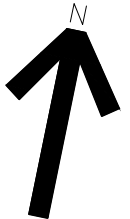


LIGHTING NOTES:

- 1.1 - CHENDELIER LED - NON DIM
1.2 - LED WARDROBE -NON DIM
1.3 - COVING LED - NON DIM(OMITTED)
2.1 - PENDANT LIGHT - NON DIM
2.2 - CORNICE LED - NON DIM(OMITTED)
2.3 - CABINET LED - NON DIM
3.1 - CHANDELIER
3.2 - CABINET LED - NON DIM
3.3 - COVING LED - NON DIM(OMITTED)
4.1 - TRIMLESS LED DONWLIGHTS - DIM
4.2 - CABINET LED - NON DIM
4.3 - CEILING PERIMETER LED - NON DIM
4.4 - VERTICAL LED - IP 65

- 5.1 - CHANDELIER
5.2 - COVING LED - NON DIM(OMITTED)
5.3 - TRIMLESS LED DOWNLIGHT - NON DIM
5.4 - WARDROBE LED SENSOR CONTROLLED
5.5 - VERTICAL/CABINET LED - NON DIM
6.1 - CHANDELIER
6.2 - WARDROBE LED SENDOR CONTROLLED
6.3 - COVING LED - NON DIM(OMITTED)
7.1 - TRIMLESS LED DOWNLIGHTS - NON DIM
7.2 - CEILING PERIMETER LED - NON DIM
7.3 - CABINET LED - NON DIM
7.4 - VERTICAL LED IP 65 - NON DIM
7.6 - CEILING PERIMETER LED - NON DIM

SCALE: 0 1 2 3 4 5m



General Notes

- 1.This drawing and associated drawings set out the aesthetic concept only and indicate preliminary and outline technical & material reference only.
2.All current LOCAL standards, Building Regulations, Specifications, Planning, Fire Health and Safety codes to be followed by each works contractor/supplier
3.Each supplier/sub contractor will be responsible for checking all site dimensions and conditions, taking setting out points and attainment of proper alignment and levels.
4. figured dimensions are to be taken in preference to those scaled. The contractor is to verify all dimensions and conditions on site

LEGEND

- M MASTER SWITCH
LIGHT SWITCH
TRIMLESS RECESSED LED DOWNLIGHTS
TRIMLESS RECESSED LED TRACK LIGHT
ABOVE CEILING INSTALLED IN ALUMINUM CHANNEL
CHANDELIER
S CONTROLLED BY SENSOR
RECESSED IN CHANNEL
X GROUP NUMBER

DB DISTRIBUTION BOARD

NOTE:
ALL LIGHTING FIXTURES - LED
ABOVE SUSPENDED CEILINGS - FIRE RATED
WET AREAS - IP RATED

| | | |
|-----|--------------------|-------|
| R1 | COVING LED OMITTED | 09/10 |
| No. | Revision/Issue | Date |

Firm Name and Address

SPEC GROUP
SOLAR HOUSE
915 HIGH ROAD
N12 8QJ
LONDON

Project Name and Address

5 CUMBERLAND TERRACE

| | | |
|-------|--------------------------|-----------|
| Title | PROPOSED LIGHTING LAYOUT | Drawing # |
| Date | 18/06/2024 | 150 |
| Scale | 1:20 @ A1 | |