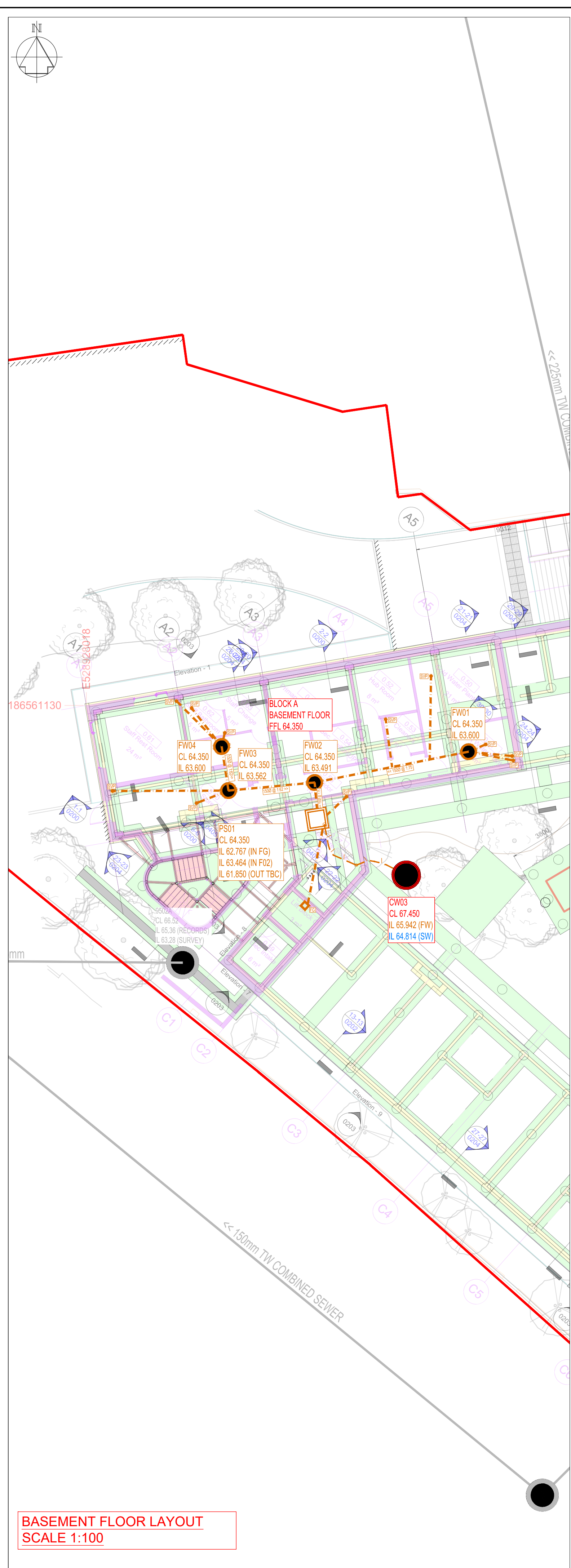


GROUND FLOOR LAYOUT
SCALE 1:100

MANHOLE SCHEDULES

Foul Water Schedule										
Manhole Number	Coordinates		Pipe			Manhole Size	Types			
	Easting	Northing	Cover Level	Invert Level	Depth to Invert		Manhole	Type D	Cover	
FW01	528947.876	186558.728	64.350	63.600	0.750	150	450	Type D	Double Seal and recessed	
FW02	528939.879	186557.126	64.350	63.491	0.859	150	450	Type D	Double Seal and recessed	
FW03	528935.386	186556.720	64.350	63.562	0.788	150	450	Type D	Double Seal and recessed	
FW04	528935.047	186558.996	64.350	63.600	0.750	150	450	Type D	Double Seal and recessed	
PS01	528939.999	186555.229	64.350	61.850	2.500	Rising Main	Packaged Pump Station. See notes opposite		Double Seal and recessed	
FW05	528970.141	186551.350	67.330	65.980	1.350	150	600	Type D	B125	
FW06	528970.558	186548.990	67.330	65.948	1.382	150	600	Type D	B125	
FW07	528971.704	186542.486	67.600	65.904	1.696	150	600	Type D	B125	
FW08	528972.128	186540.084	67.600	65.887	1.713	150	600	Type D	B125	
FW09	528972.847	186536.007	67.600	65.859	1.741	150	600	Type D	B125	
FW10	528974.332	186527.586	67.800	65.802	1.998	150	600	Type D	B125	
FW11	528966.135	186518.382	67.350	65.719	1.631	150	600	Type D	B125	
FW12	528963.454	186520.754	67.212	65.695	1.517	150	600	Type D	B125	
FW13	528960.013	186523.798	67.075	65.664	1.411	150	600	Type D	B125	
FW14	528958.220	186525.409	67.000	65.587	1.413	150	600	Type D	B125	
FW15	528953.660	186529.419	66.800	65.267	1.533	150	600	Type D	B125	
FW16	528950.540	186532.179	66.800	65.048	1.552	150	600	Type D	B125	
FW17	528943.553	186538.360	66.156	64.557	1.599	150	600	Type D	B125	
FW18	528940.991	186540.628	65.993	64.377	1.616	150	600	Type D	B125	
FW19	528945.956	186554.664	67.450	65.984	1.466	150	600	Type D	B125	
FW20	528954.527	186556.174	67.450	66.100	1.350	150	600	Type D	B125	
CW01	528931.035	186547.776	64.750	63.280	1.470	225	600	Type D	B125	
CW02	528936.949	186543.530	65.300	63.312	1.988	225	600	Type D	B125	
CW03	528944.638	186552.310	67.450	64.414	3.036	225	1200	Type B	B125	

Surface Water Schedule										
Manhole Number	Coordinates		Pipe			Manhole Size	Types			
	Easting	Northing	Cover Level	Invert Level	Depth to Invert		Manhole	Type D	Cover	
SW01	528950.359	186544.519	67.490	66.200	1.290	225	600	Type D	B125	
SW02	528961.060	186535.051	67.490	66.136	1.354	225	600	Type D	B125	
SW03	528963.304	186537.587	67.490	66.121	1.369	225	600	Type D	B125	
SW04	528960.907	186551.183	67.490	66.059	1.431	225	600	Type D	B125	
SW05	528958.891	186552.116	67.450	65.049	2.401	225	600	Type D - Catchpit	B125	
SW06	528968.902	186528.114	67.490	66.200	1.290	225	600	Type D	B125	
SW07	528942.897	186555.806	67.490	66.200	1.290	225	600	Type D	B125	
SW08	528957.039	186558.300	67.490	66.136	1.354	225	600	Type D	B125	
SW09	528961.148	186559.025	67.490	66.200	1.290	225	600	Type D	B125	
SW10	528939.297	186564.720	67.450	64.656	2.794	150	1200	Type B - Hydrobrake Manhole	B125	
SW11	528926.088	186562.356	64.400	63.486	0.914	150	450	Type D - Catchpit	B125	
SW12	528927.339	186556.713	64.400	62.828	1.572	150	1200	Type B - Hydrobrake Manhole	B125	
SW13	528923.371	186553.981	64.580	62.796	1.784	225	450	Type D	B125	
SW14	528923.950	186575.319	64.520	63.573	0.947	150	600	Type D	D400	



BASEMENT FLOOR LAYOUT
SCALE 1:100

GENERAL NOTES

G1. DO NOT SCALE THIS DRAWING.

G2. ANY DIMENSIONAL DISCREPANCIES SHOULD BE NOTIFIED TO THE ENGINEER IMMEDIATELY.

G3. ALL DIMENSIONS ARE IN MILLIMETRES - (mm)
ALL LEVELS ARE IN METRES - (m) AND ARE ABOVE ORDNANCE DATUM AT NEWLYN, CORNWALL UNLESS NOTED OTHERWISE.

G4. NORTH SHOWN INDICATIVE ONLY.

G5. THIS DRAWING IS TO BE READ IN CONJUNCTION WITH ALL RELEVANT SPECIFICATIONS, DRAWINGS, DETAILS AND OTHER DESIGN INFORMATION.

G6. ALL DRAWINGS AND WRITTEN MATERIAL CONTAINED WITHIN, CONSTITUTE ORIGINAL AND UNPUBLISHED WORK OF THE ENGINEER AND MAY NOT BE DUPLICATED, USED, REPRODUCED OR DISCLOSED WITHOUT WRITTEN CONSENT OR EXPRESS PERMISSION FROM THE ENGINEER.

G7. ALL INFORMATION CONTAINED IN THIS DOCUMENT IS COPYRIGHT ©

G8. WHERE THE CONTRACTOR UNDERTAKES OR ENGAGES A THIRD PARTY TO UNDERTAKE TEMPORARY WORKS DESIGN, OR VARIES THE PELL FRISCHMANN DESIGN IN ANY WAY, THEN THE CONTRACTOR WILL TAKE FULL RESPONSIBILITY AND LIABILITY FOR ALL DESIGN ASPECTS, INCLUDING A DESIGN RISK ASSESSMENT. THE CONTRACTOR SHALL INFORM PELL FRISCHMANN OF ANY PROPOSED VARIANCES TO THE DESIGN.

EXISTING DRAINAGE KEY:

THAMES WATER COMBINED WATER SEWER

PROPOSED DRAINAGE KEY:

PROPOSED SURFACE WATER SEWER

PROPOSED FOUL WATER SEWER

PUMPED MAIN BY OTHERS

PROPOSED COMBINED WATER SEWER

EXISTING SEWER TO BE ABANDONED

PROPOSED RWP

PROPOSED SVP

PROPOSED SURFACE WATER ATTENUATION

PROPOSED DRAINAGE CHANNEL

PROPOSED GULLY

PROPOSED SURFACE WATER DESIGN

SURFACE WATER DESIGN BASED ON RESTRICTED DISCHARGE OF 5 L/S, SPLIT 4.5 L/S FOR HIGH LEVEL AND 0.5 L/S FOR LOW LEVEL.

- ATTENUATION PROVIDED TO ENSURE NO FLOODING FOR 1:100 YEAR EVENT +40% CLIMATE CHANGE.

- STORAGE PROVIDED IN UNDERGROUND BOX CRATES FOR A VOLUME OF 42.18m³.

PROPOSED FOUL WATER DESIGN

- FOUL WATER DESIGN BASED ON GRAVITY NETWORK AT GF LEVEL AND A PUMPED OUTFALL FROM BASEMENT LEVEL.

- BASED ON 14 No. DOUBLE OCCUPANCY ROOMS @ 150L/HD WILL REQUIRE 4.200 LD EMERGENCY STORAGE IN ACCORDANCE WITH BUILDING REGS PART H. PACKAGE PUMP STATION TO BE MAXI TWIN SERIES 1.5m Ø BY 2.5m DEEP TP PROVIDE 4.400 LTRS STORAGE SUPPLIED BY DIRECT PUMPS AND TANKS LTD. PUMP TO BE FITTED WITH DUAL PUMPS AND HIGH LEVEL ALARM. CONTRACTOR TO CONFIRM ACTUAL PUMP SPECIFICATION WITH MANUFACTURER.

- CONTRACTOR CAN SOURCE OWN PACKAGED PUMP STATION TO BE SPECIFIED BY MANUFACTURER AND WILL NEED TO PROVIDE 24 HR EMERGENCY STORAGE IN ACCORDANCE WITH PARA. 2.3 BUILDING REGS PART H. PF WILL NEED TO APPROVE PUMP SPECIFICATION.

EXISTING DRAINAGE SHOWN HAS BEEN PLOTTED AND INTERPOLATED FROM THAMES WATER SEWER RECORDS, TOPOGRAPHICAL SURVEY AND CCTV SURVEY (WHERE AVAILABLE). CONTRACTOR TO VERIFY ALL DRAINAGE ON SITE (PRIOR TO COMMENCEMENT OF WORKS).

P07 Basement drainage amended + SW in courtyard filled
P06 SW10, CW03 and attenuation levels amended
P05 Update to suit Arboricultural comments
P04 Update to suit Arboricultural comments
P03 Updated to suit crane base location
P02 Updated to suit latest building and landscape layouts
P01 DRAFT ISSUE - For Co-ordination
REV DESCRIPTION DRN CHK APP DATE

SP RH RH 05.08.24
RH MF 03.07.24
RH MF 02.07.24
RH MF 17.05.24
RH MF 25.04.24
SP MF 22.03.24
SP MF 21.12.23

Pell Frischmann

4th FLOOR, THE POYNT, WOLLATON STREET, NOTTINGHAM NG1 9PW
Telephone +44 (0)115 784 8860
Email: photography@pellfrischmann.com
www.pellfrischmann.com

Architect/Client/Contractor

MORGAN SINDALL

Project

CAMDEN HOSTEL

CHESTER ROAD

Drawing Title

PROPOSED DRAINAGE LAYOUT

Drawing Status

PRELIMINARY

Name	Date	Status Code
JN	15.12.23	S0
JN	15.12.23	Scale
JN	15.12.23	1:100
RH	15.12.23	Revision
RH	15.12.23	P07

Drawing No.

CH0011-PEF-CH-XX-DR-C-0550

© Pell Frischmann Consultants (AO 1189841)