

REV	DATE	BY	CHK	ISSUED
01	21.08.23	DN	CS	Post Pre-App update
02	31.08.23	DN	CS	Post Pre-App update
03	05.09.23	DN	CS	Post Pre-App issue
04	12.10.23	DN	CS	Updated Pre-App issue
05	15.12.23	DN	CS	Updated Pre-App issue
06	19.01.24	DN	CS	Updated Pre-App issue
07	28.03.24	AA	DN	Planning Issue
08	31.05.24	AA	DN	Revised Issue
09	09.10.24	AA	DN	Revised Issue

0 1m 2m 3m 4m 5m  
1:100

#### NOTES

#### DRAWING KEY

- Site Boundary Approximate
- Habitable Rooms
- Bathrooms / Shower / WC's
- Access / Utility
- Storage
- Refuse / Recycling & Cycle Store
- Porous Paved Areas
- Outdoor Amenity (Lawned Area)
- Planted Areas
- Proposed Building Footprint Submitted in Planning Application
- No.63 Netherhall Gardens Front Elevation Building Line

#### Area Schedule

Level	01	00	-01	Total
GIA Approx	44.8 sqM / 482.2 sqFt	44.8 sqM / 482.2 sqFt	44 sqM / 473.6 sqFt	133.6 sqM / 1,442 sqFt

All existing drawings & information based on measured survey drawings provided by ABA Surveys Ltd received 22.12.22 & 09.01.23

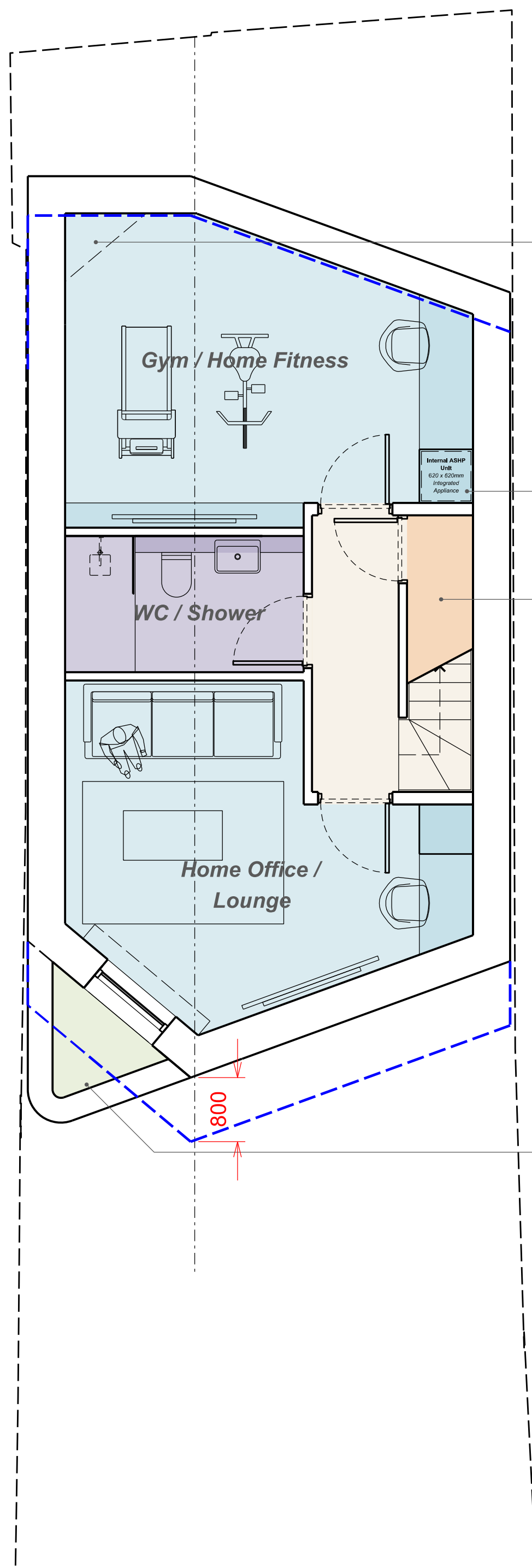
## SMITH & NEWTON ARCHITECTS

RIBA CHARTERED PRACTICE  
A 9 Shepherd's Lane, Homerton, London E9 6JJ  
T +44 (0)20 8520 3867  
E info@smith-newton.com W www.smith-newton.com

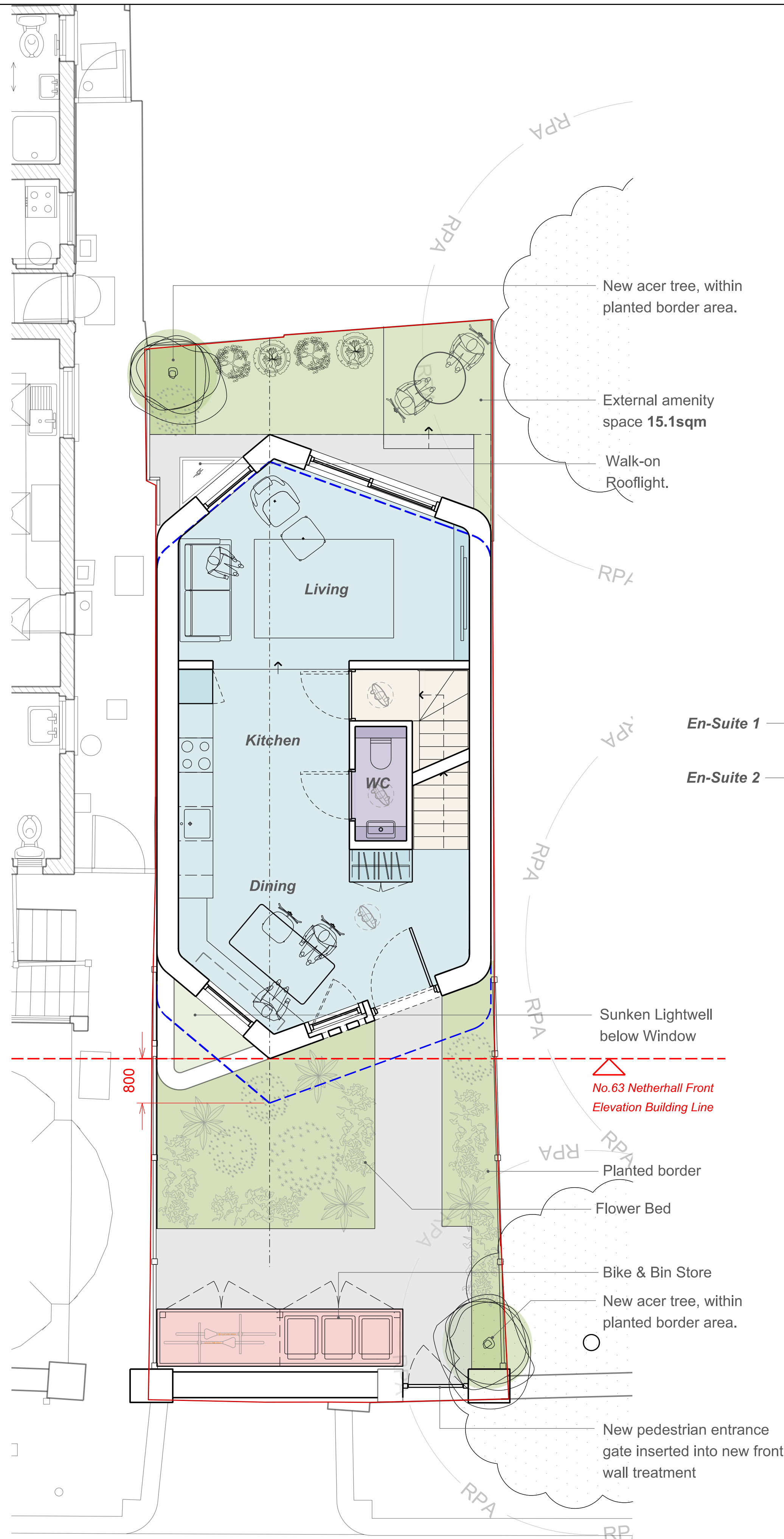
Project  
**NETHERHALL**  
Drawing Title  
**GA Plans Matrix Proposed**

Status  
**Planning**  
Scale(s) at A3  
**1:100**

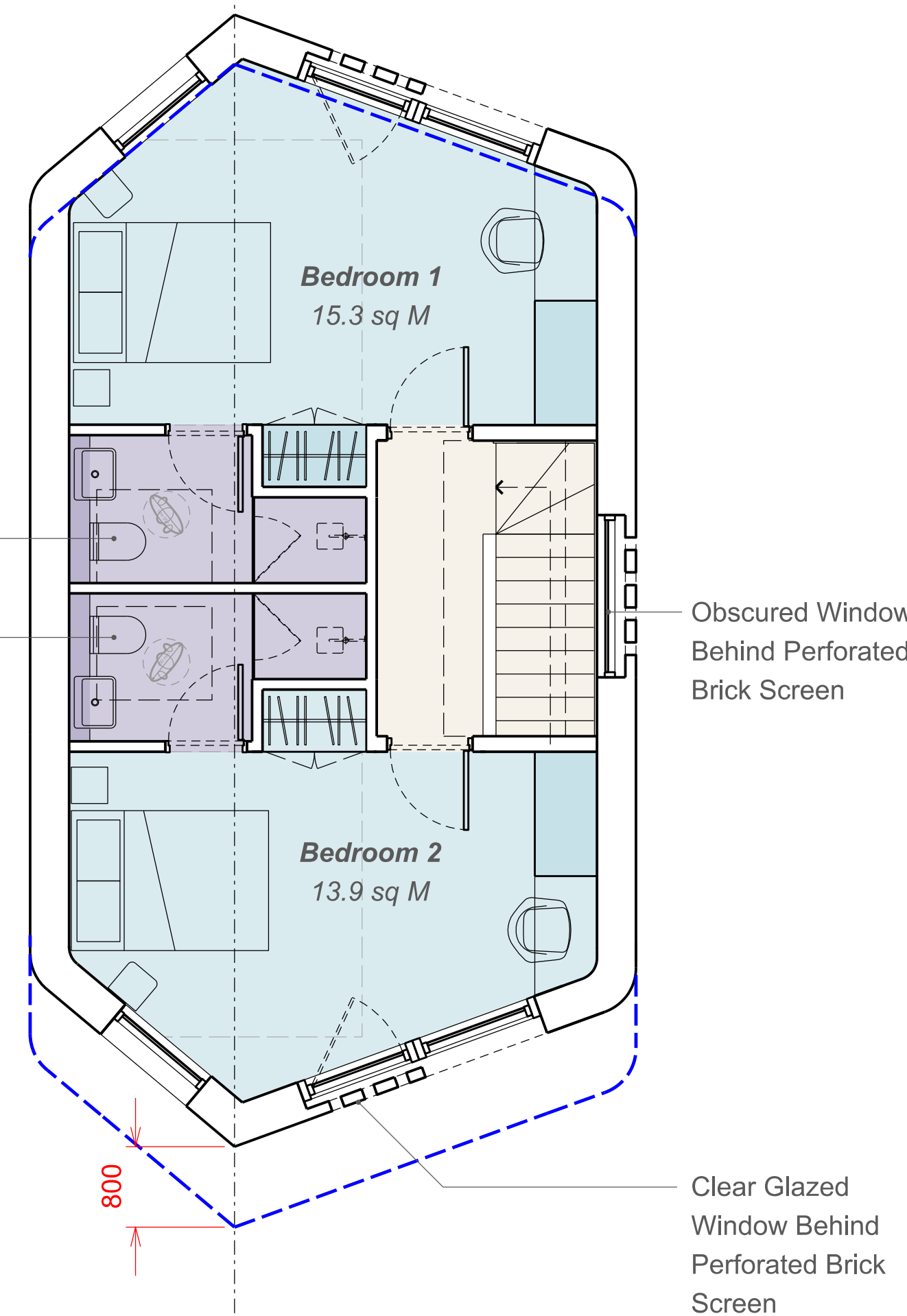
DRAWING  
**0736-03-0250**  
REVISION  
**09**



**LOWER GROUND FLOOR**  
Level -01



**GROUND FLOOR**  
Level 00



**FIRST FLOOR PLAN**  
Level 01