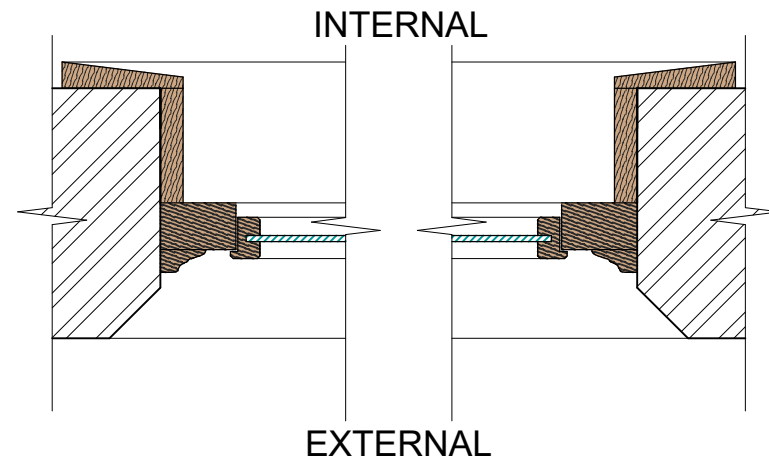
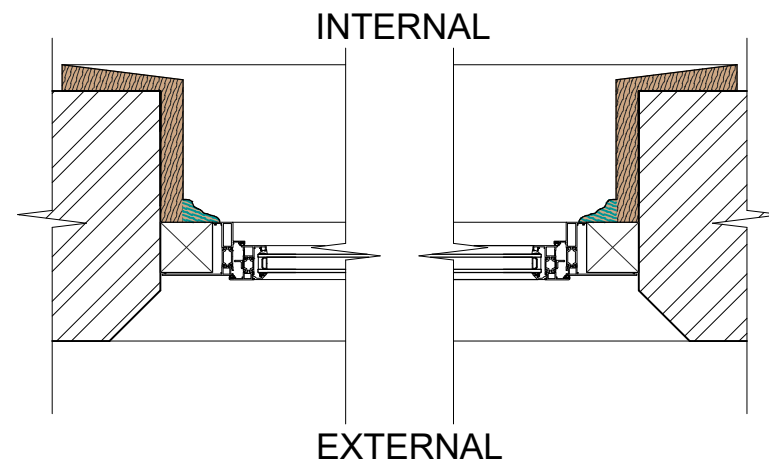
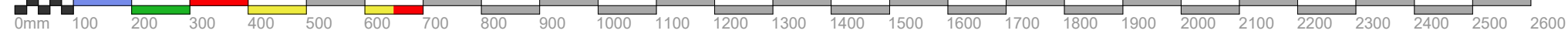


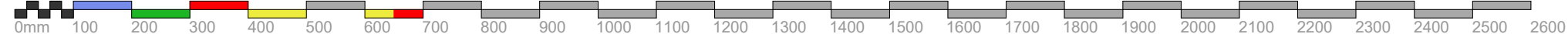
THE USE OF THIS DATA/DRAWING BY THE RECIPIENT ACTS AS AN AGREEMENT OF THE FOLLOWING STATEMENTS.
 IF YOU DO NOT AGREE WITH ANY OF THE FOLLOWING INFORMATION SUPPLIED TO YOU PLEASE DO NOT USE THE DATA/DRAWING AND REPORT ANY DISCREPANCIES IN WRITING TO CS2 BEFORE PROCEEDING.
 ALL DRAWINGS ARE BASED UPON SITE INFORMATION SUPPLIED BY THIRD PARTIES/SUB CONTRACTORS AND AS SUCH THEIR ACCURACY CANNOT BE GUARANTEED.
 ALL FEATURES ARE APPROXIMATE AND SUBJECT TO CLARIFICATION BY STATUTORY SERVICE ENQUIRIES AND CONFIRMATION OF THE LEGAL BOUNDARIES.
 CHECK ALL DIMENSIONS ON SITE.
 DO NOT SCALE THE DRAWING.
 USE FIGURED DIMENSIONS IN ALL CASES.
 ALL DIMENSIONS TO BE IN METRIC STANDARDS UNLESS STATED OTHERWISE.



EXISTING JAMB DETAIL - MISC WINDOWS 1-18, 1-19 & 1-20 1:10



PROPOSED JAMB DETAIL - MISC WINDOWS 1-18, 1-19 & 1-20 1:10



SPECIFICATION:

PROPOSED WINDOWS HIGHLIGHTED IN GREEN ARE THOSE INTENDING TO BE REPLACED WITH 'THE HERITAGE WINDOW COMPANY' CONSERVATION RANGE OF SLIDING SASH WINDOW SYSTEMS AS PER THEIR SECTIONAL DETAILS.
 WINDOWS TO HAVE MATCHING APPEARANCE IN FRAME SIZE, DEPTH, DIMENSIONS, OPENING SECTIONS AND RECESSED INSTALLATION TO THE EXTERNAL BRICKWORK FACE TO MATCH CURRENT WINDOW POSITIONS.
 TIMBER INFILL SURROUND TO BE MADE GOOD AND DECORATED TO MATCH EXISTING

SAMPLE PHOTOGRAPHS OF THE CONSERVATION RANGE:

A	Initial issue	08-10-2024	PTM
REV	DESCRIPTION	DATE	INITIAL

STAGE:

PLANNING



CS2 Spectrum Building, Bond Street,
 Bristol, BS1 3LG
 T 0117 929 0692
 E otimms@CS2.co.uk

PROJECT:

Denmoss House
 Camden High Street
 London, NW1 0LU

TITLE:

Jamb Details - Sheet 5 of 7

DRAWN: PTM	CHECKED: AR	DATE: AUGUST 2024
----------------------	-----------------------	-----------------------------

SCALE: 1:10 @ A3	DWG NO: 3248-014	REVISION: A
----------------------------	----------------------------	-----------------------