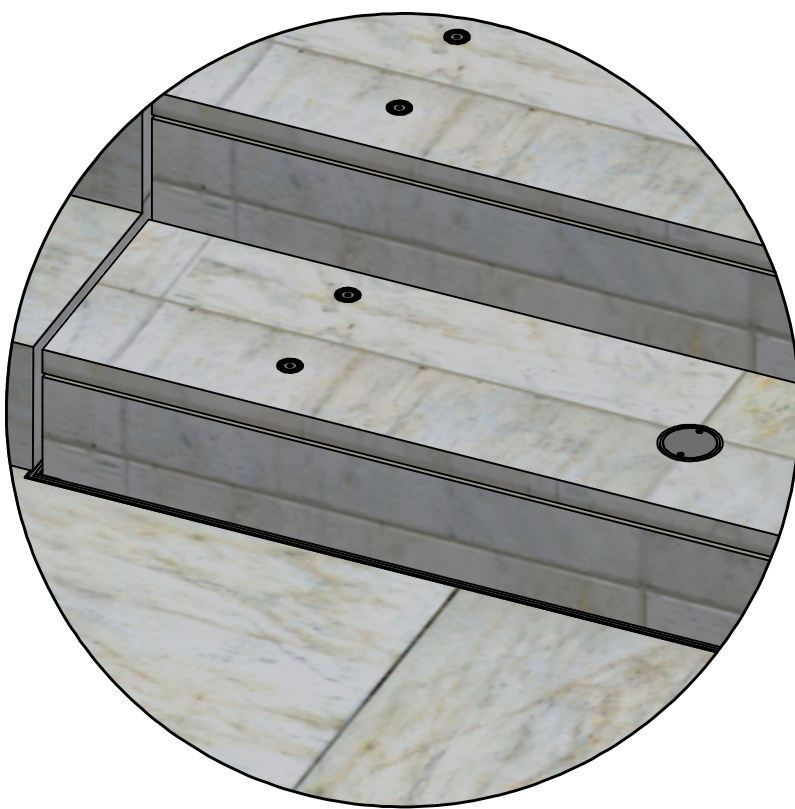
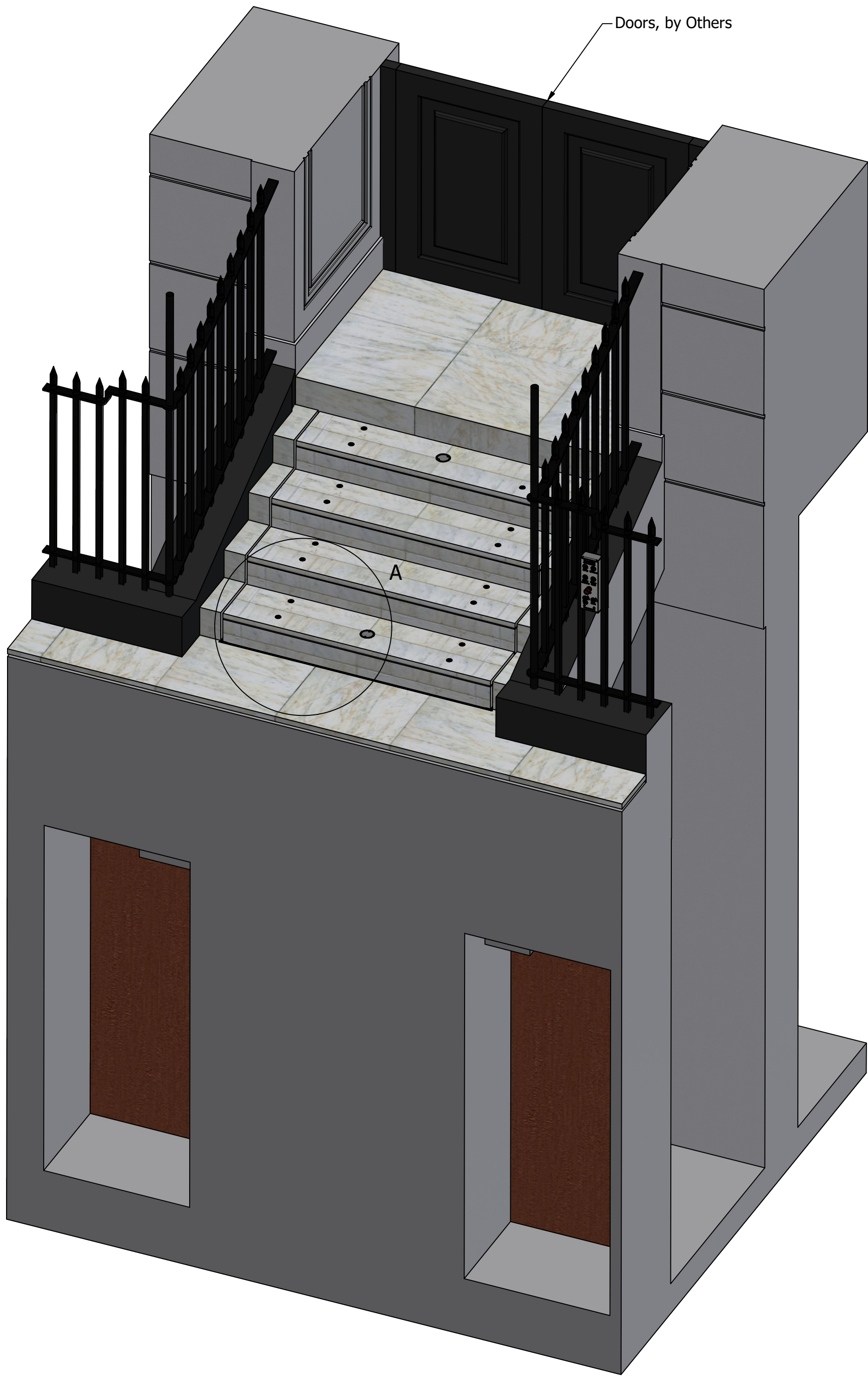


Sesame Laser Scanner installed on the ceiling above the Upper Landing Area to protect pedestrians during Sesame Lift Operation. (details on last page)

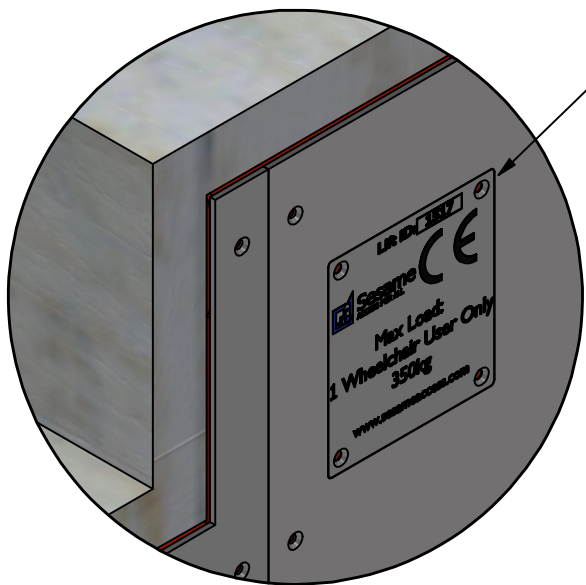


Lift Home (1 : 18)

Doors, by Others

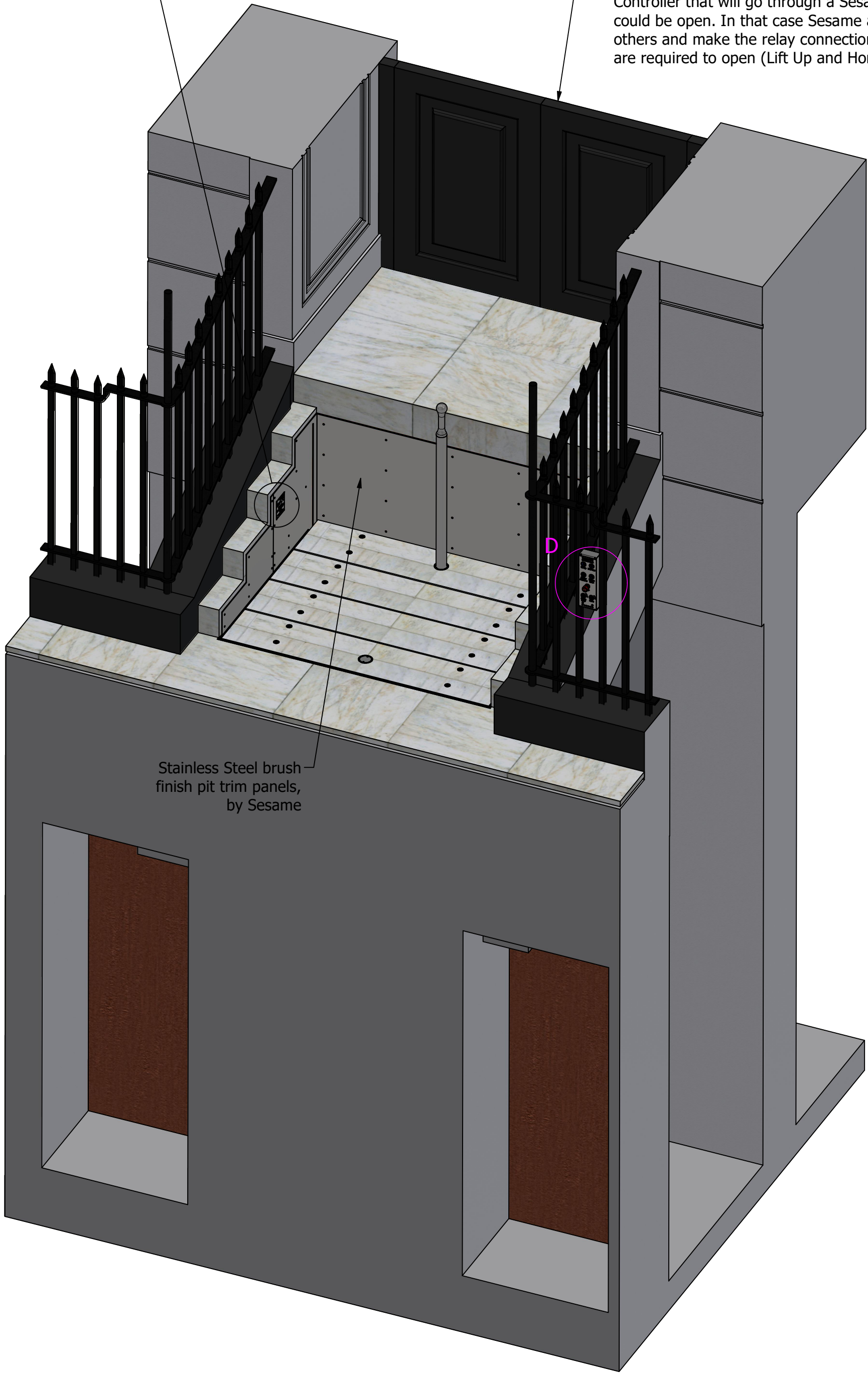


A (1 : 8)



Stainless Steel brush finish pit trim panels, by Sesame

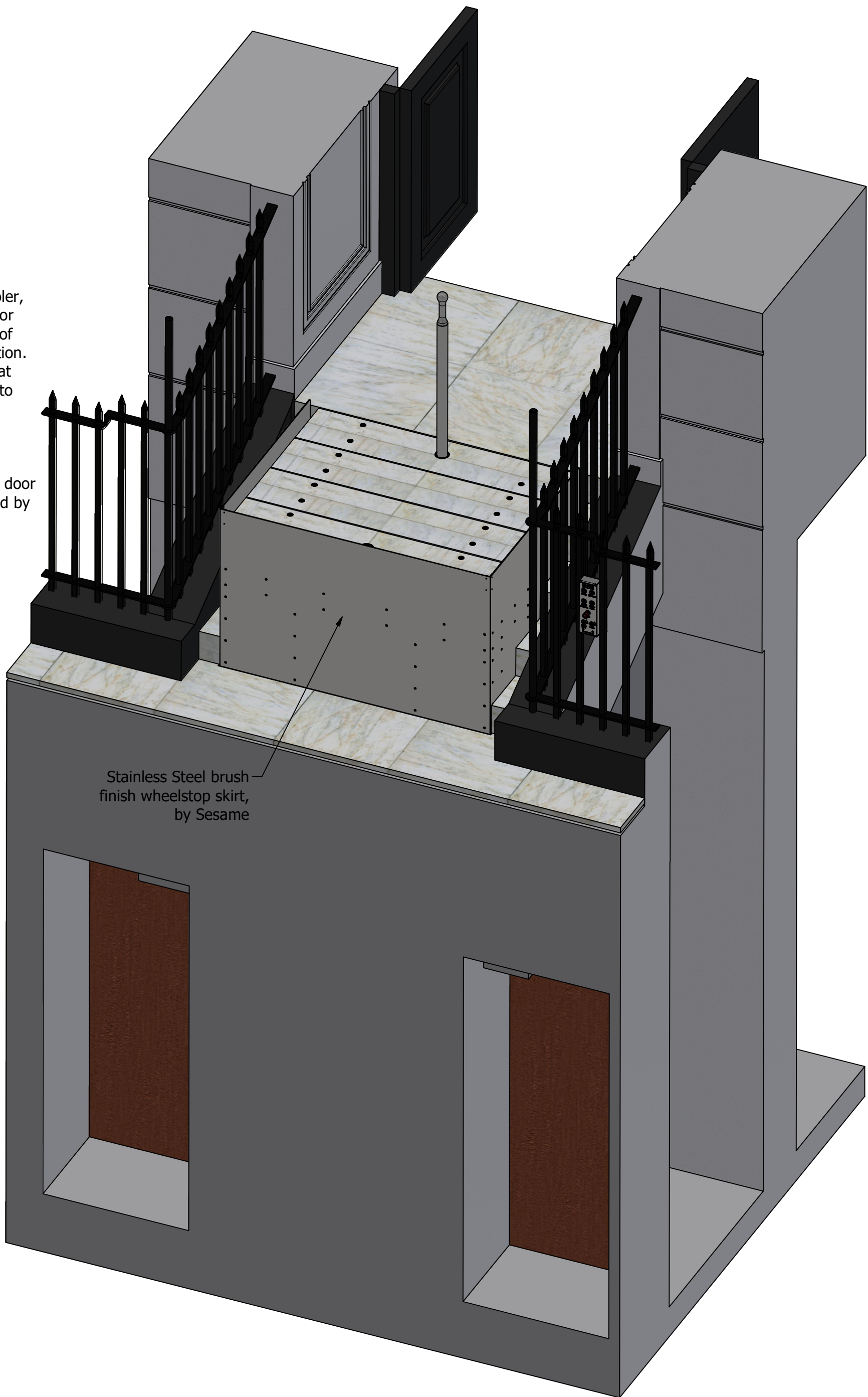
Lift Down (1 : 18)



Stainless Steel brush finish pit trim panels, by Sesame

The Upper Door needs to be Connected to the Sesame Lift Controller, to avoid opening the door when the lift is in use, as the Upper Door needs to be closed and locked when the lift is in operation, apart of the times when Sesame Lift is in its Home Position or Lift Up Position. *A volt free contact provided by the door company, that will trigger Sesame software to operate Sesame Lift System (as per user requested function), knowing that the Upepr Landing is protected by a closed and locked door. *Also a pair of wires from the door company to Sesame System Controller that will go through a Sesame relay to indicate that the door could be open. In that case Sesame are using the voltage provided by others and make the relay connection at the time when the doors are required to open (Lift Up and Home Positions).

Lift Up (1 : 18)



Stainless Steel brush finish wheelstop skirt, by Sesame

D (1 : 4)



Do not use these drawings to form a pit, Sesame's detailed design must be completed and approved before any pits are formed.

BS:6440:2011, 8.3 - Adjacent surfaces
For adjacent surfaces 10mm or less from any part of the carrier, any projections on the surface shall be as follows:-
a) If they include projections up to 1.5mm, they may have square corners
b) If they include projections from 1.5mm up to 5mm they shall have a minimum of 15 degrees vertical chamfers on all edges
Adjacent surfaces greater than 10mm and less than 100mm from the carrier shall have a sensitive edge, photo cell or light curtain located along any affected sides.
Note there is a risk of crushing if the part of the structure is less than 100mm to an adjacent surface.
To remove any crush zone risk there should be a distance of 300mm or more between the carrier and the crush zone.

PLEASE NOTE THAT THE SESAME LIFT (RISERS AND TREADS) NEEDS TO BE CLAD FIRST, BEFORE THE SITE CLADDING IS PUT AROUND THE SESAME SYSTEM.
IF THE AREA AROUND THE SESAME SYSTEM IS CLAD PRIOR TO THE SESAME LIFT, SESAME SYSTEM LTD. WILL TAKE NO RESPONSIBILITY FOR MISALIGNMENTS OF ALL CLADDING.

Client/Architect/Stonemason to specify the Treads Nosing's or Anti Slip Strips on the Treads to match the surrounding steps cladding details.

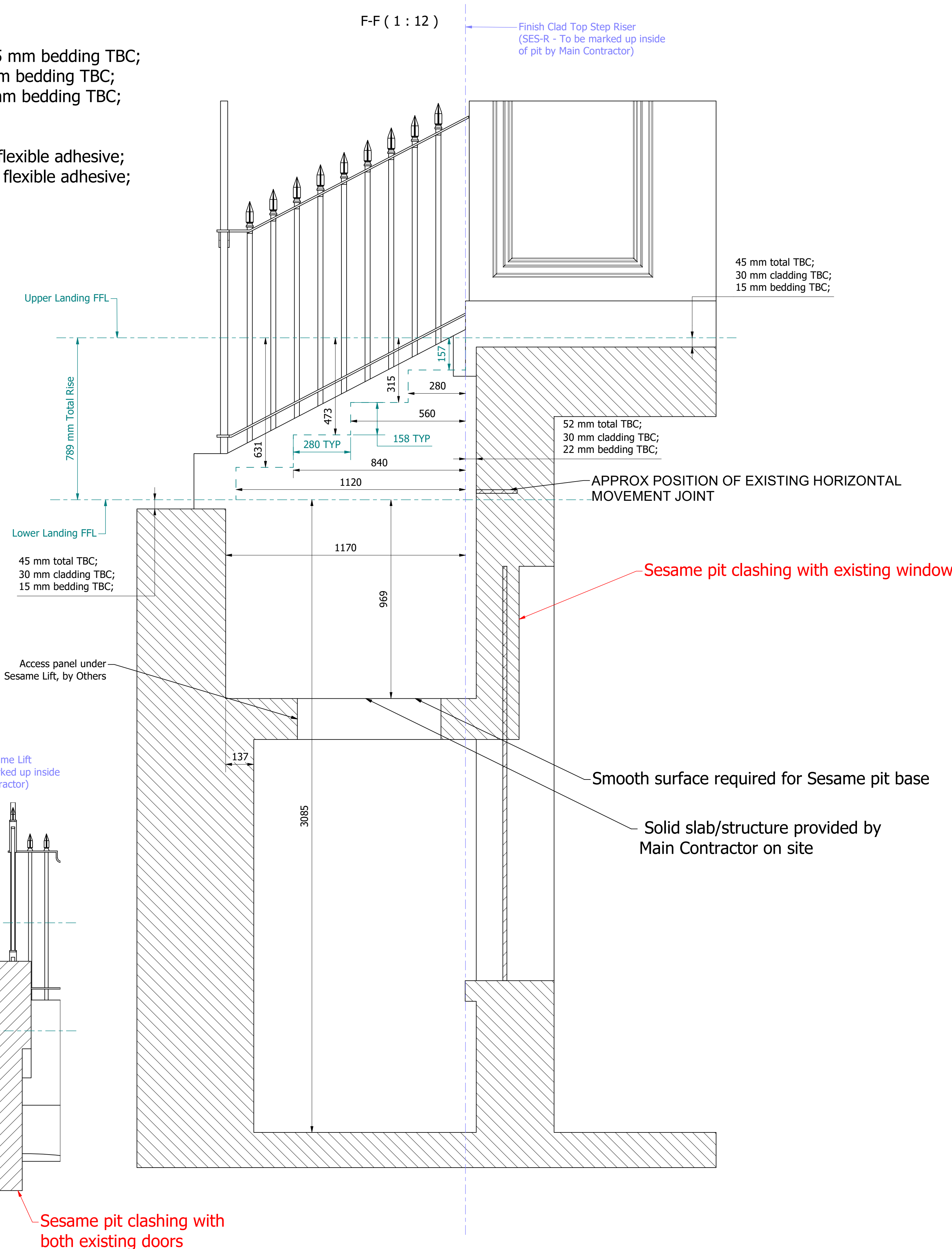
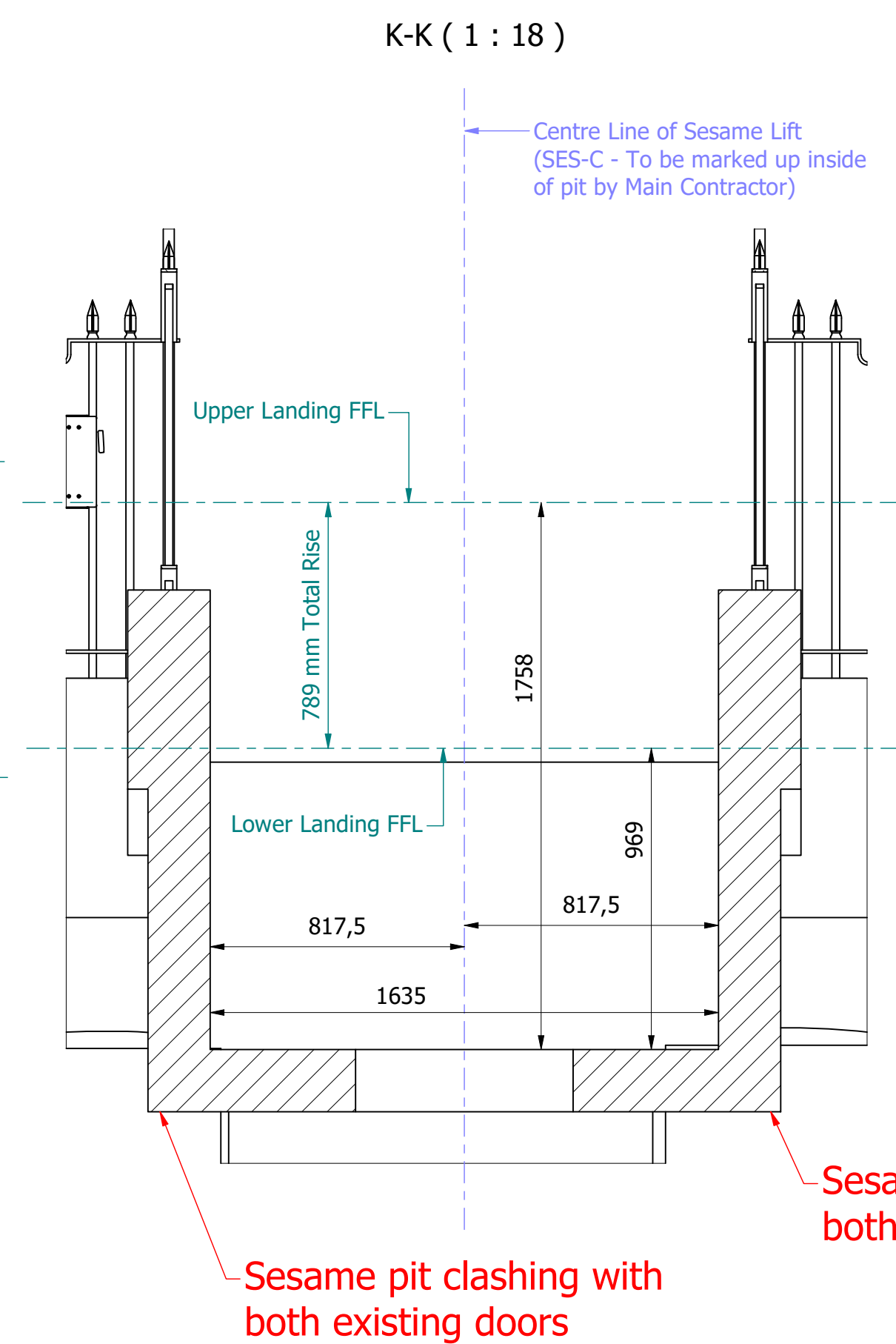
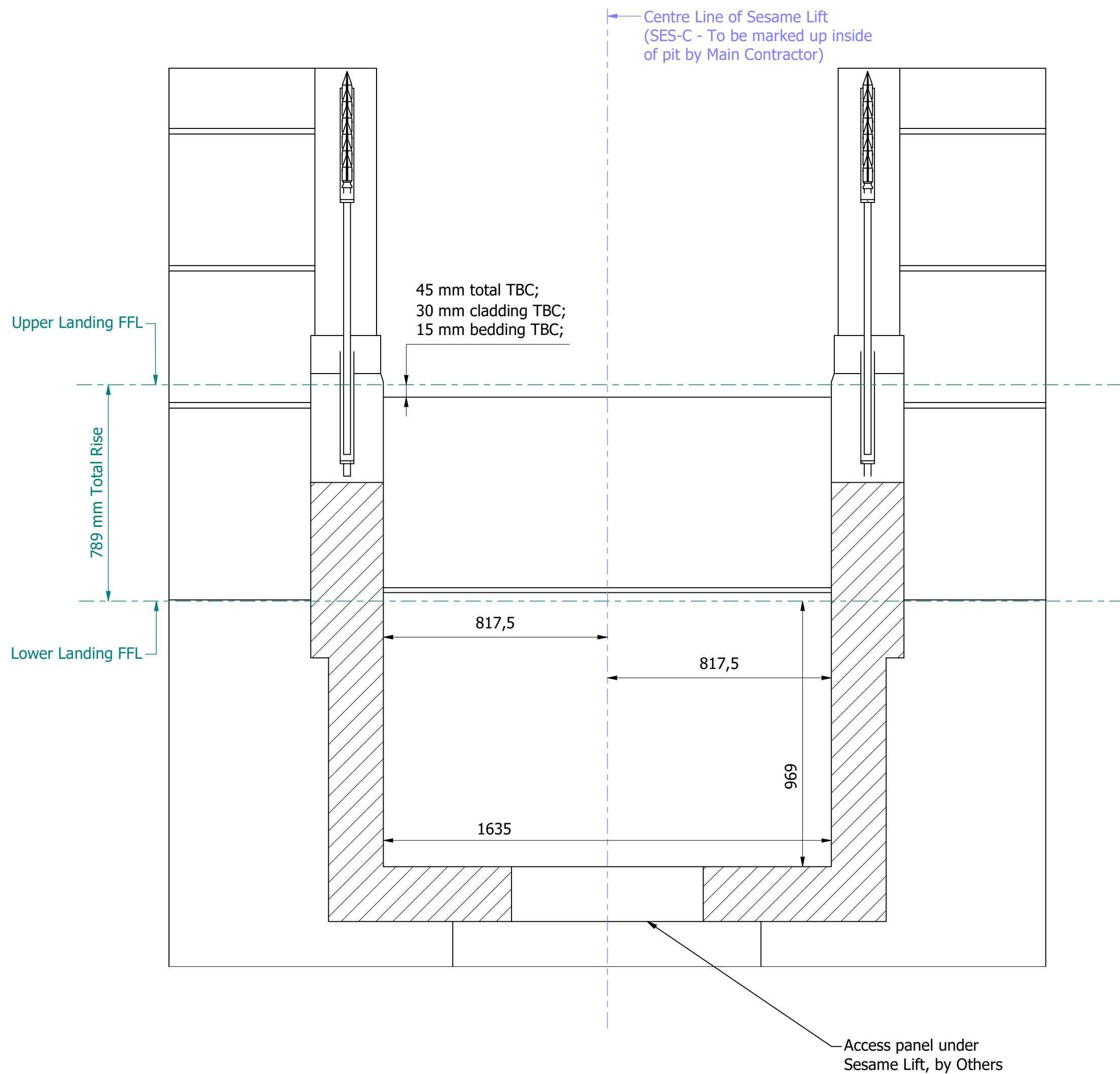
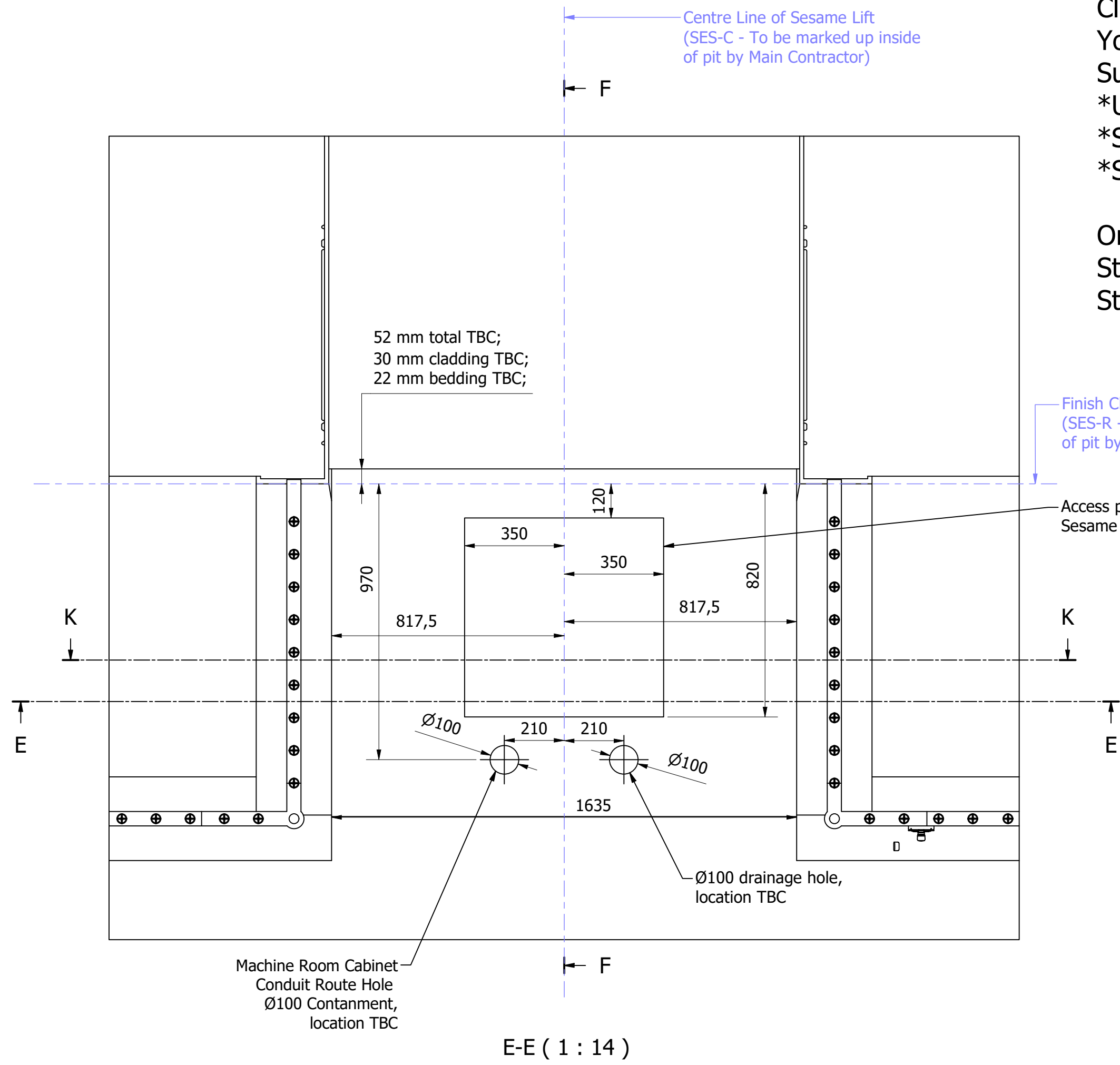
Changes since Rev_0:
- Approx location of movement joint added as per drawing provided;
- Exact position of fixing points added;

Colours on the drawing are for representation only.


This drawing and the information it contains is the property of Sesame Access Systems, LTD. and must not be copied or issued to any third party	Designed by K. Porwol	Checked by S.J.Lyons	Date 19/09/2024	Project Name: 1517.Bloomsbury Way No.24-28	Status Information	Revision 1
				Description 3D Layout	Job Number 1517	Sheet 1 / 6

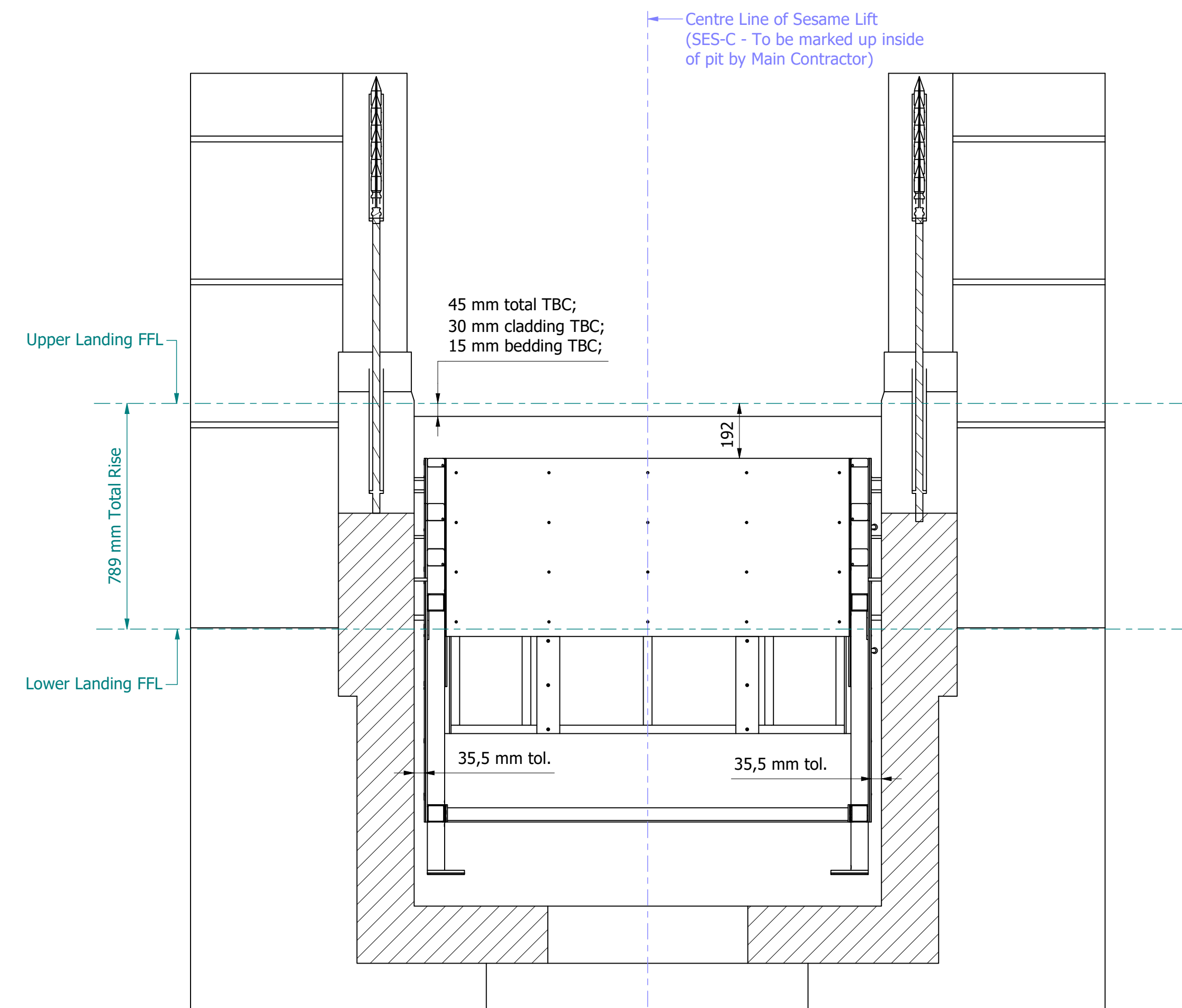
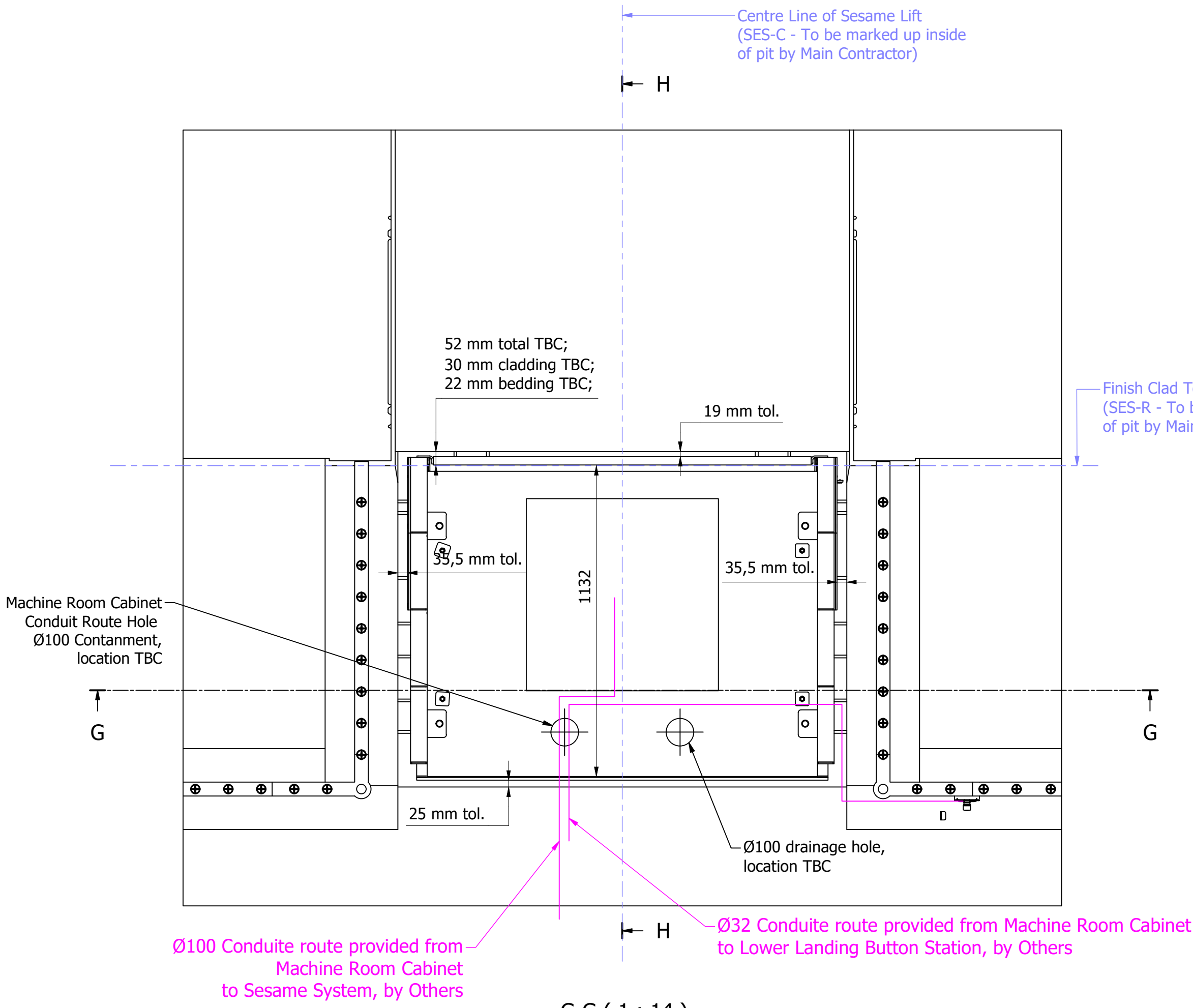
Cladding used in project:
York Stone
Surrounding Sesame System:
*Upper Landing: 30 mm cladding TBC + 15 mm bedding TBC;
*Step Risers: 30 mm cladding TBC + 15 mm bedding TBC;
*Step Treads: 30 mm cladding TBC + 15 mm bedding TBC;

On Sesame System:
Step Risers: 30 mm cladding TBC + 5 mm flexible adhesive;
Step Treads: 30 mm cladding TBC + 5 mm flexible adhesive;

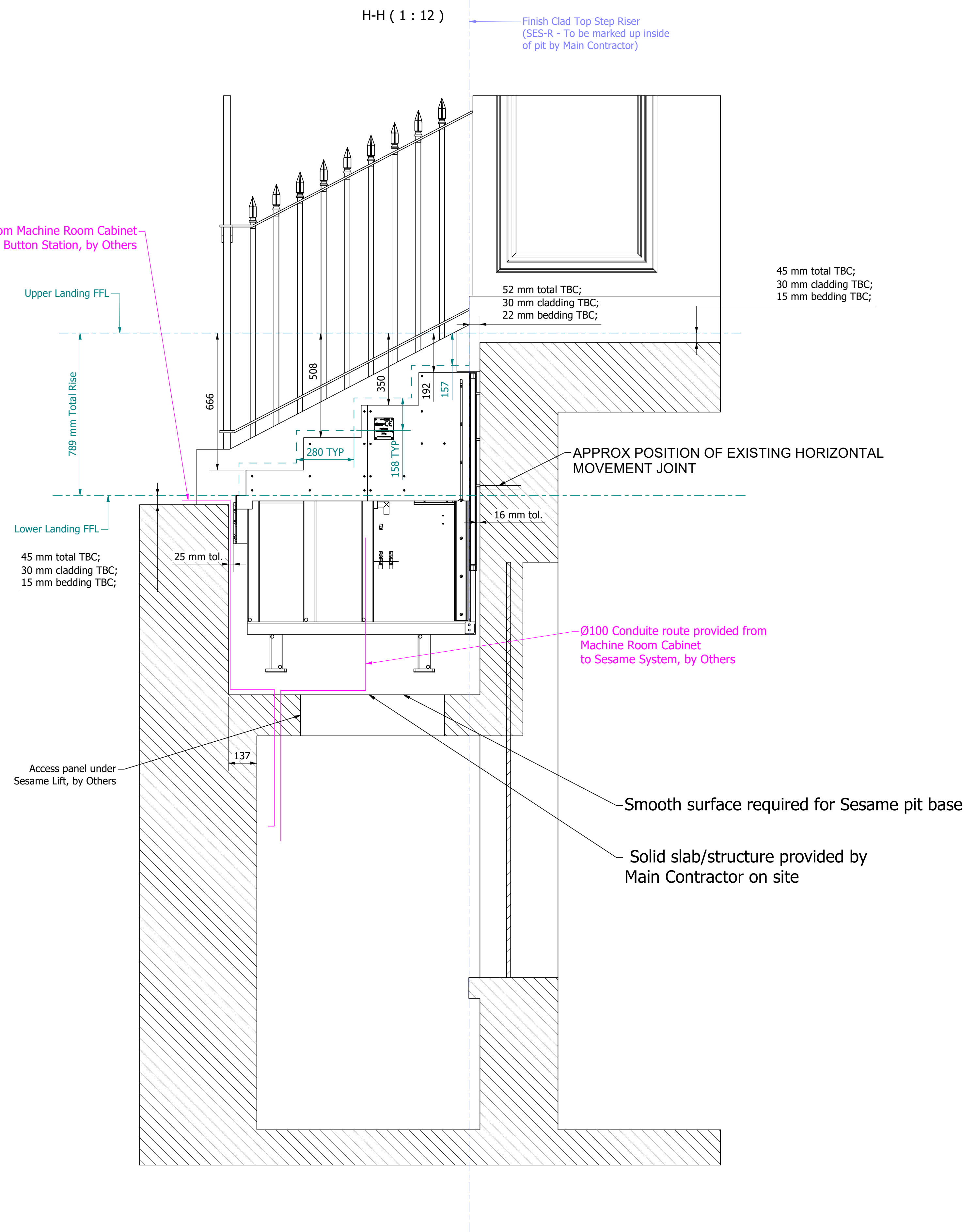


Do not use these drawings to form a pit, Sesame's detailed design must be completed and approved before any pits are formed.


This drawing and the information it contains is the property of Sesame Access Systems, LTD. and must not be copied or issued to any third party	Designed by K. Porwol	Checked by S.J.Lyons	Date 19/09/2024	Project Name: 1517.Bloomsbury Way No.24-28	Status Information	Revision 1
				Description Sesame Pit Requirements	Job Number 1517	Sheet 2 / 6

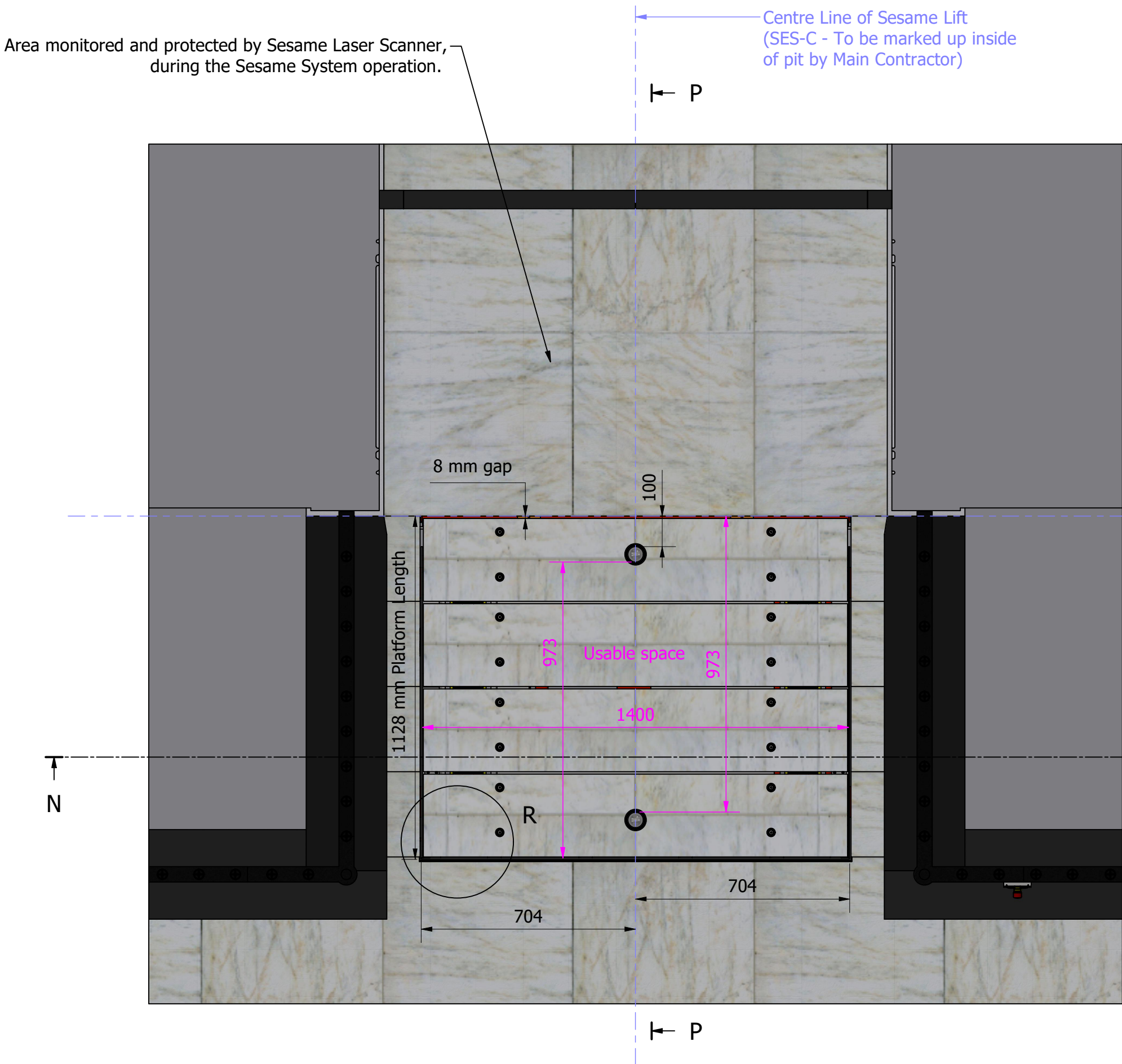


Ø32 Conduite route provided from Machine Room Cabinet
to Lower Landing Button Station, by Others

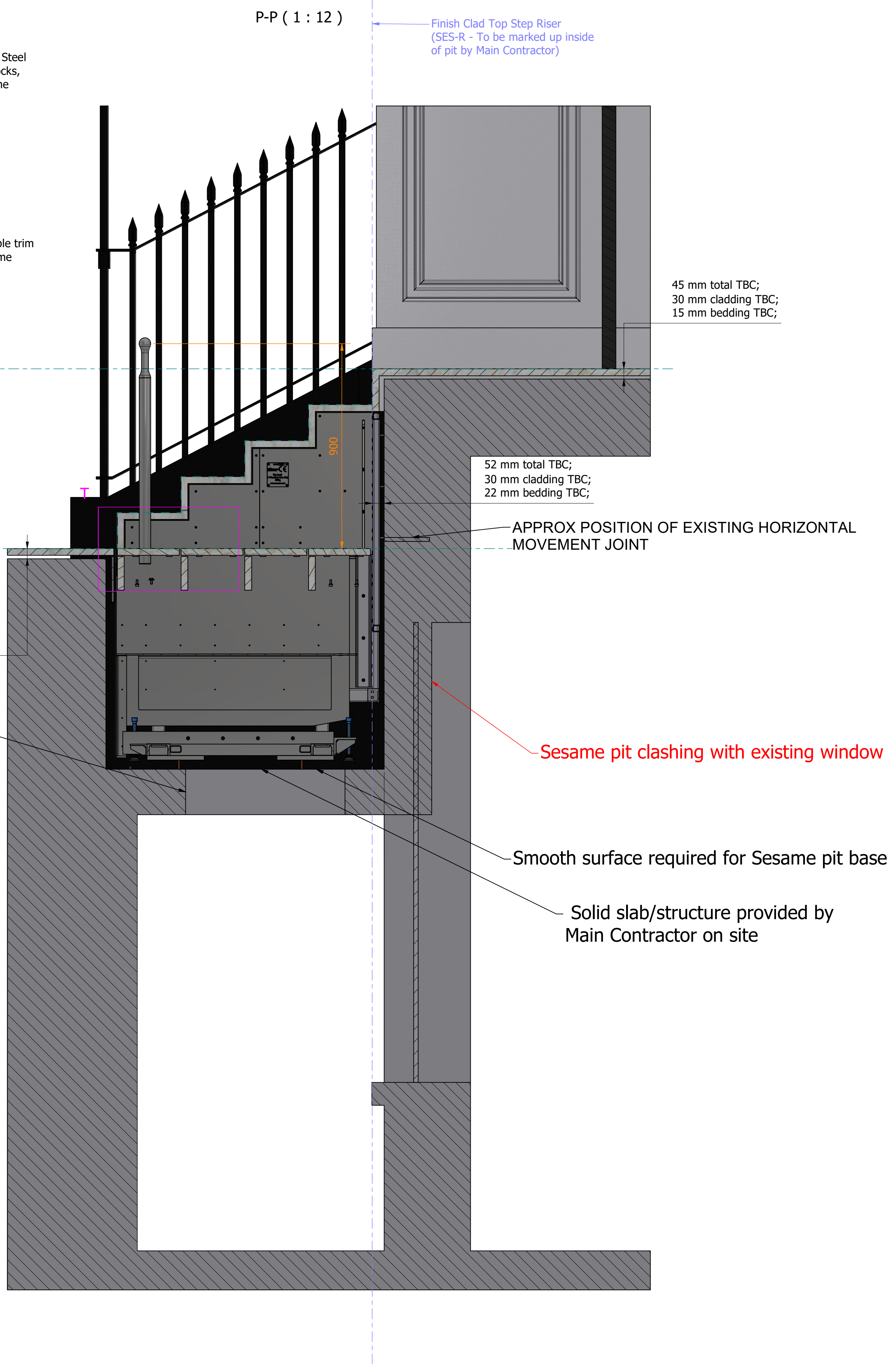
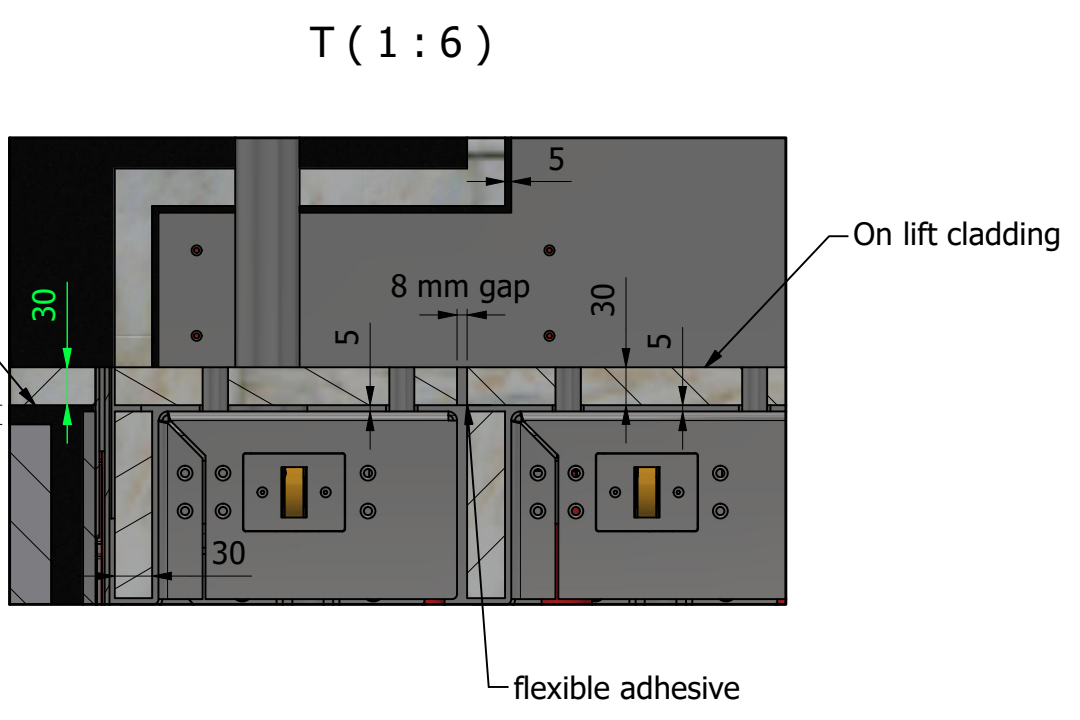
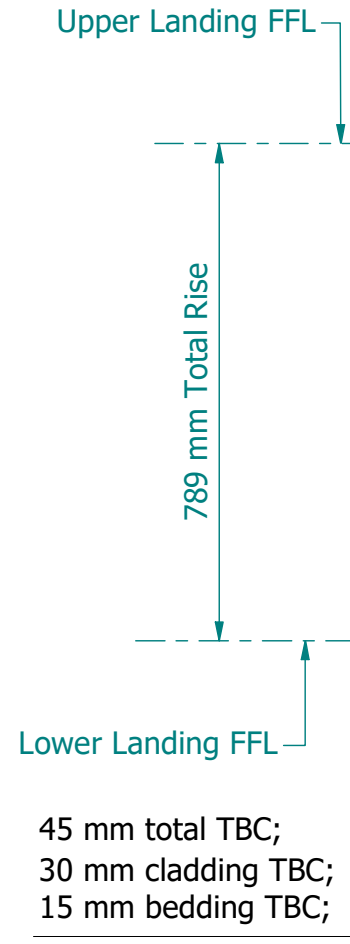
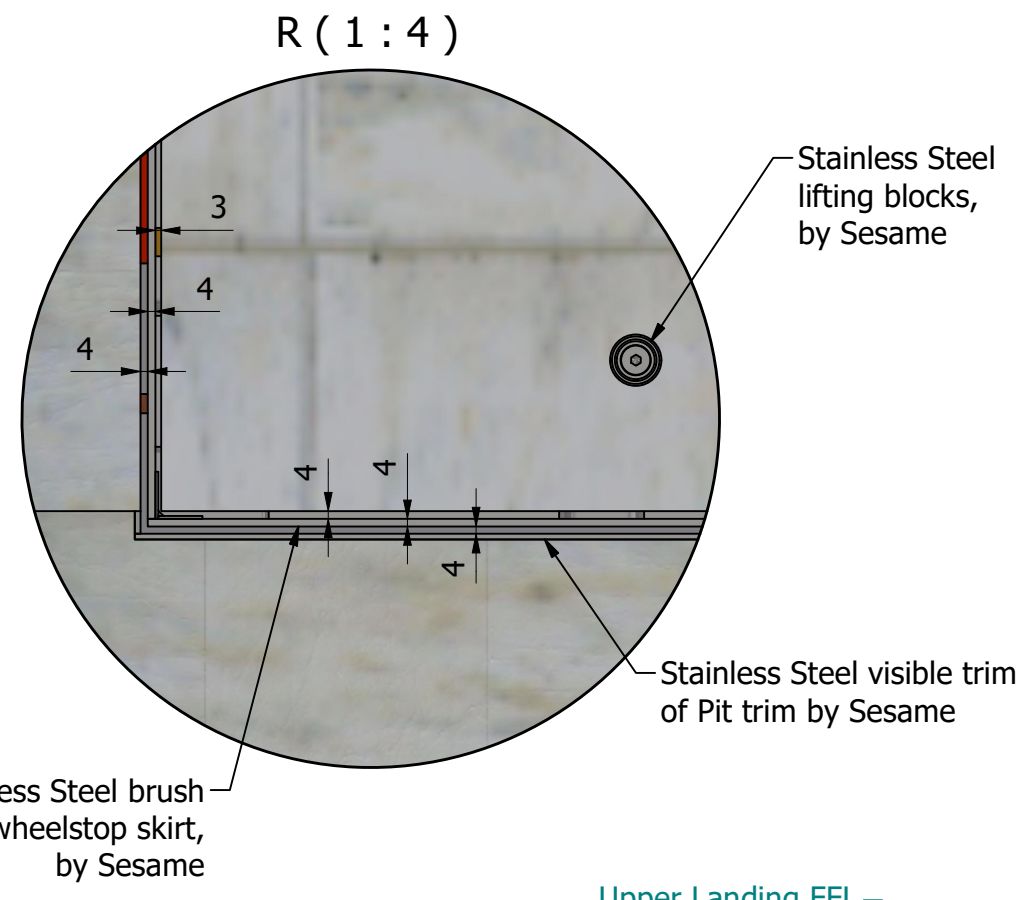
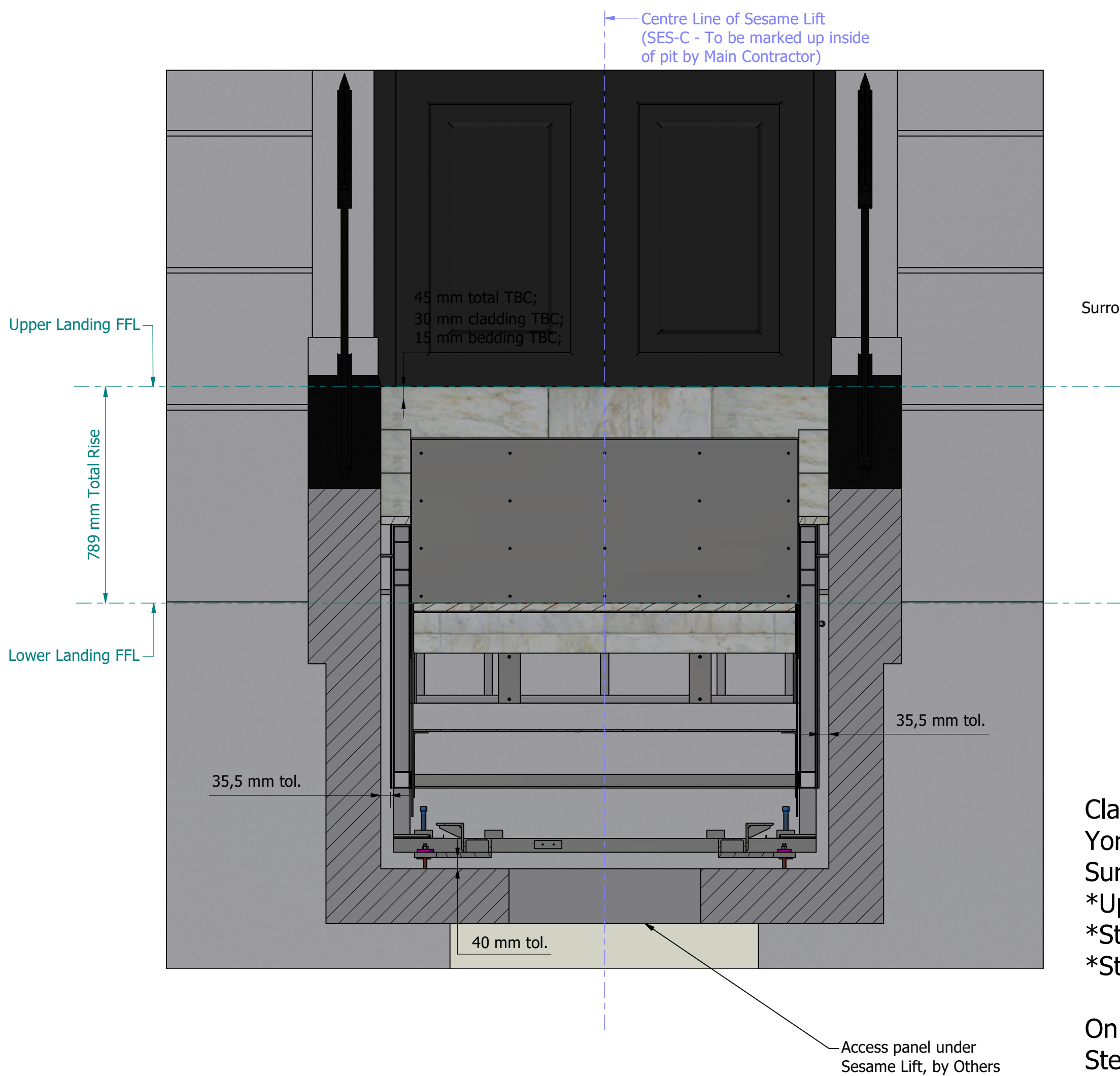


Do not use these drawings to form
a pit, Sesame's detailed design
must be completed and approved
before any pits are formed.

This drawing and the information it contains is the property of Sesame Access Systems LTD, and must not be copied or issued to any third party	Designed by K. Porwol	Checked by S.J.Lyons	Date 19/09/2024	Project Name: 1517.Bloomsbury Way No.24-28	Status Information	Revision 1
				Description Pit Trim Installation	Job Number 1517	Sheet 3 / 6




N-N (1 : 14)



Cladding used in project:
York Stone
Surrounding Sesame System:
*Upper Landing: 30 mm cladding TBC + 15 mm bedding TBC;
*Step Risers: 30 mm cladding TBC + 15 mm bedding TBC;
*Step Treads: 30 mm cladding TBC + 15 mm bedding TBC;

On Sesame System:
Step Risers: 30 mm cladding TBC + 5 mm flexible adhesive;
Step Treads: 30 mm cladding TBC + 5 mm flexible adhesive;

Colours on the drawing are for representation only.

This drawing and the information it contains is the property of Sesame Access Systems LTD. and must not be copied or issued to any third party	Designed by K. Porwol	Checked by S.J.Lyons	Date 19/09/2024	Project Name: 1517.Bloomsbury Way No.24-28	Status Information	Revision 1
	 Sesame ACCESS FOR ALL Sesame ACCESS FOR ALL Unit 1, Cumberland Works Winterset Business Park Surrey, KT14 7LP Tel: +44 (0)1739 440088 Fax: +44 (0)870 705252 Email: foral@sesameaccess.com Web: www.sesameaccess.com			Description Sesame System Layout	Job Number 1517	Sheet 5 / 6

Technical drawing of the Sesame Access Lower Landing Button Station, showing front, side, and base views with dimensions and callouts.

Front View Dimensions:

- Width: 145
- Height: 307
- Mounting Depth: 53
- Panel Depth: 36
- Mounting Flange: 4

Buttons and Labels:

- Press and Hold Controls
- Lift Up
- E-Stop
- Lift Down
- Back to Stairs
- Call for Assistance
- Em. Lift Lower
- Lift On
- www.sesameaccess.com

Callouts:

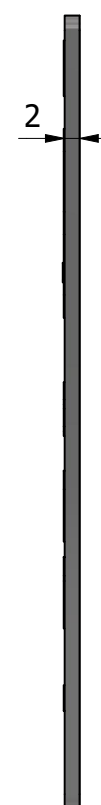
- Max. 1100 mm from FFL
- Min. 900 mm from FFL
- Stainless Steel Brush Finish Lower Landing Button Station, by Sesame
- Existing fence representation TBC
- Conduit route hole

Base View Dimensions:

- Width: 90
- Height: 56
- Mounting Depth: 53
- Panel Depth: 36
- Mounting Flange: 4
- Conduit route hole: Ø16

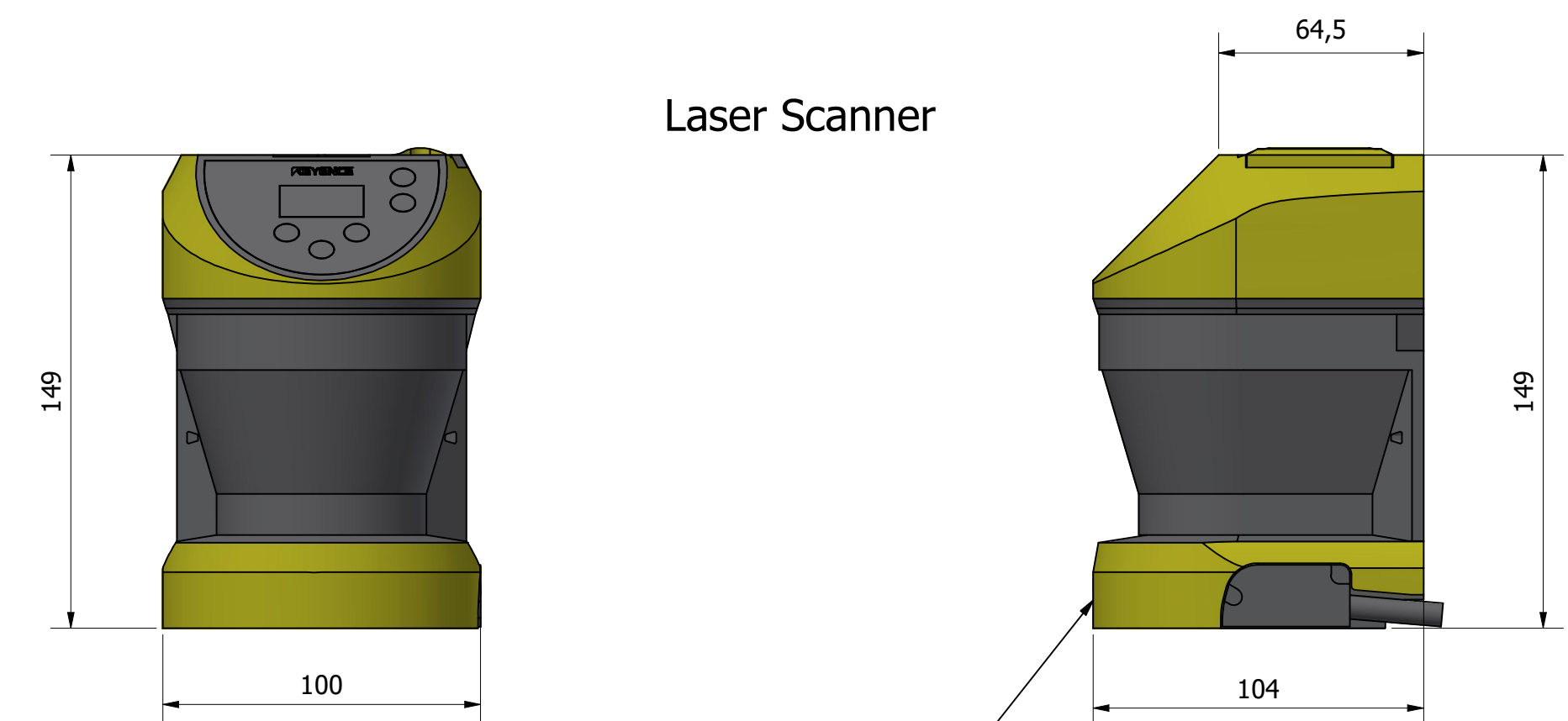
The manufacturing time from drawings approval for these Buttons Stations is 12 weeks.

Diagram of the Sesame Access for All lift ID plate. The plate is rectangular with a dark gray background and white text and graphics. It features four mounting holes (two at the top, two at the bottom). The text includes "Lift ID: 1517" in a white box, the Sesame logo (a blue stylized "S" with a white "E" inside), "ACCESS FOR ALL" in white, and "CE" in large white letters. Below this, it says "Max Load: 1 Wheelchair User Only 350kg" in large white text, and "www.sesameaccess.com" at the bottom. Dimensions are shown: a vertical dimension of 105 on the left and a horizontal dimension of 93 at the bottom.

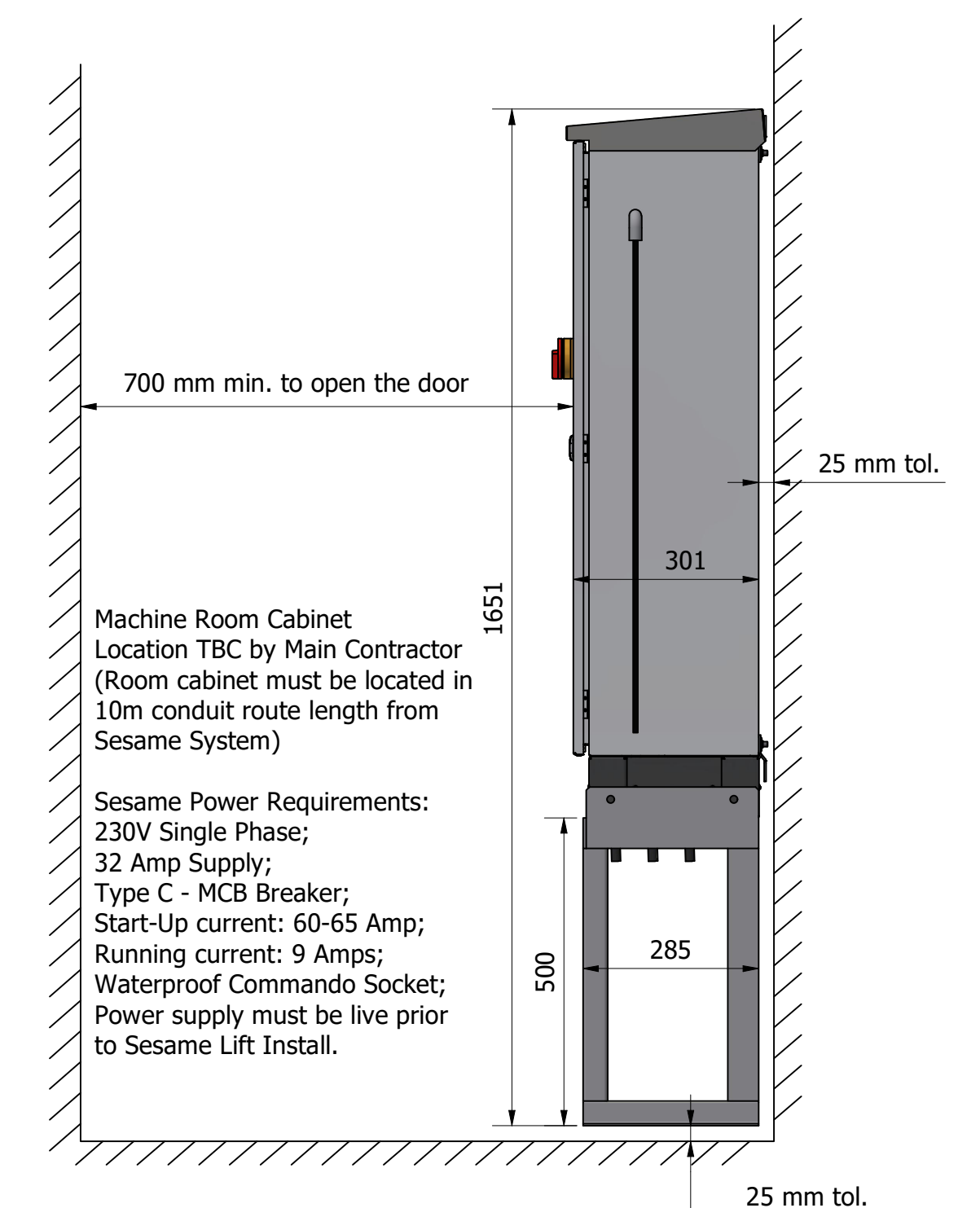
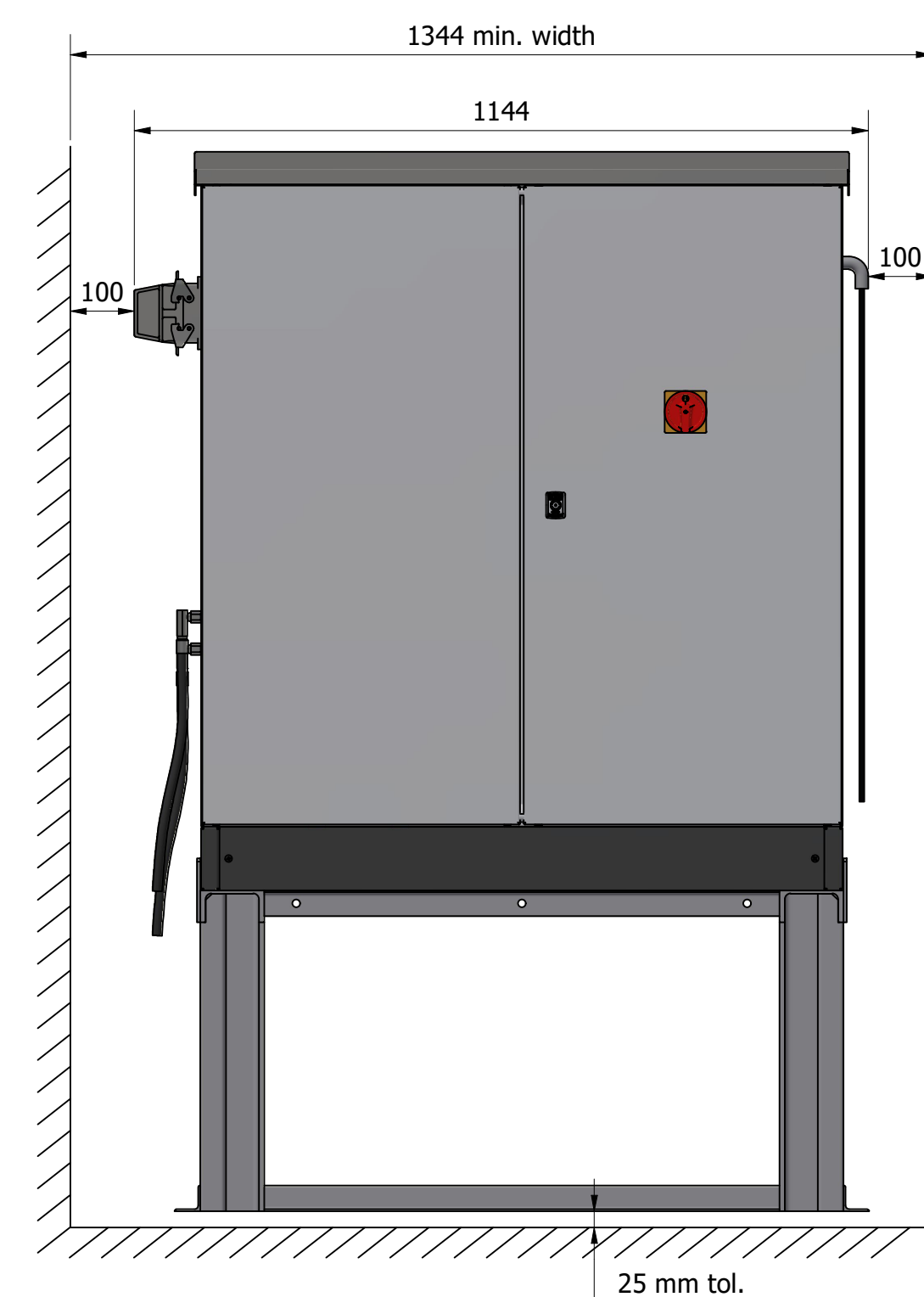


[Home](#) > [Doorbells](#) > [DC915N](#) > [Data Sheet](#)


Wireless portable doorbell with range extender, sleep mode and push button – White



Sesame Laser Scanner installed on the ceiling above the Upper Landing Area to protect pedestrians during Sesame Lift Operation.



Colours on the drawing are for representation only.

This drawing and the information it contains is the property of Sesame Access Systems LTD, and must not be copied or issued to any third party	Designed by K. Porwol	Checked by S.J.Lyons	Date 19/09/2024	Project Name: 1517.Bloomsbury Way No.24-28		Status Information	Revision 1
	 Sesame ACCESS FOR ALL Unit 1, Cumberland Works Watnall Business Park Sunny, K174 7JF Tel: +44 (0)1710 440088 Fax: +44 (0)870 705352 Email: foal@sesameaccess.com www.sesameaccess.com			Description Button Station and Hydraulic & Electric requirement	Job Number 1517	Sheet 6 / 6	