

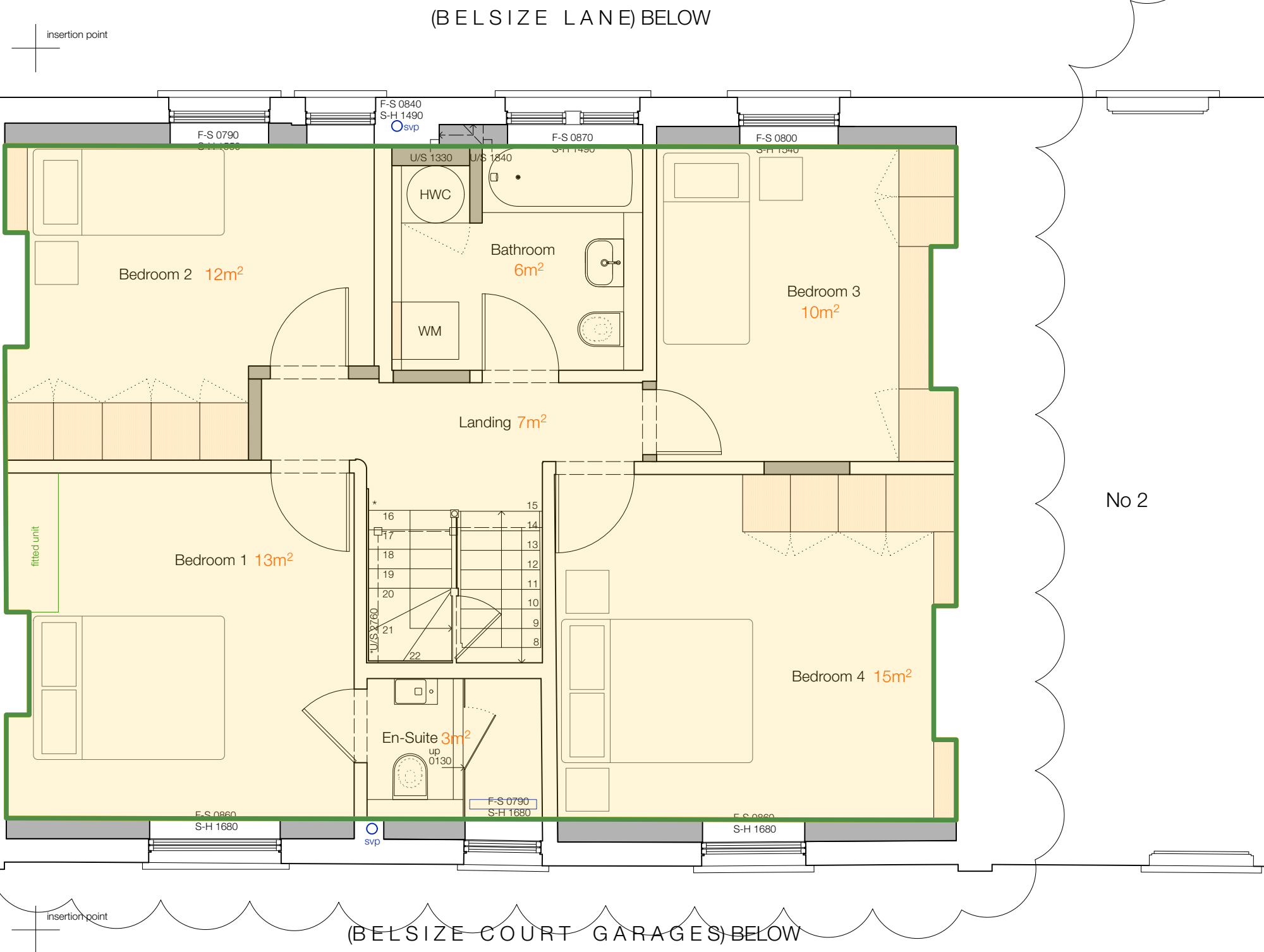
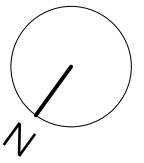
**KEY:**

- ▽ Floor Level
- △ Ceiling Level
- svp Soil and Vent Pipe
- rwp Rain Water Pipe
- ic Inspection Cover
- cl Cover Level
- u/s Underside Height
- BH 2000 Beam Height
- AH 2500 Arch Head
- SPR 1800 Spring Point
- FS 0780 Floor to Sill
- SH 1850 Sill to Head
- Drainage
- - - Boundary Line
- - - Above
- New Structure(130mm)/Insulation(215mm)
- Joinery
- Free-standing Furniture
- ▭ Radiator
- ⊙ Section Marker

- Upper Floor Flat GIA
- Area at 2.5m high and above

Total Upper Floor Flat GIA on FF: 66m<sup>2</sup>  
 Upper Floor Flat GIA on FF at 2.5m high and above: 66m<sup>2</sup>

Total GIA of Upper Floor Flat: 100m<sup>2</sup>  
 Total GIA of Upper Floor Flat at 2.5m high and above: = 75% of GIA  
 Refer to P100, P110 & P120



<p><b>SANYA POLESCUK ARCHITECTS</b>                  8a BELSIZE COURT GARAGES LONDON NW3 5AJ                  T:0207 431 8580 e-mail:enquiries@polescukarchitects.com</p>	<p><b>NO: P110</b></p> <p><b>REV: PL2</b></p> <p><b>DATE: 01 October 2024</b></p>
<p><b>TITLE: First Floor Plan (as built)</b></p>	
<p><b>PROJECT: 4 Belsize Court Garages, London</b></p>	
<p><b>PAPER: A3</b></p>	
<p><b>SCALE: 1:50</b></p>	