

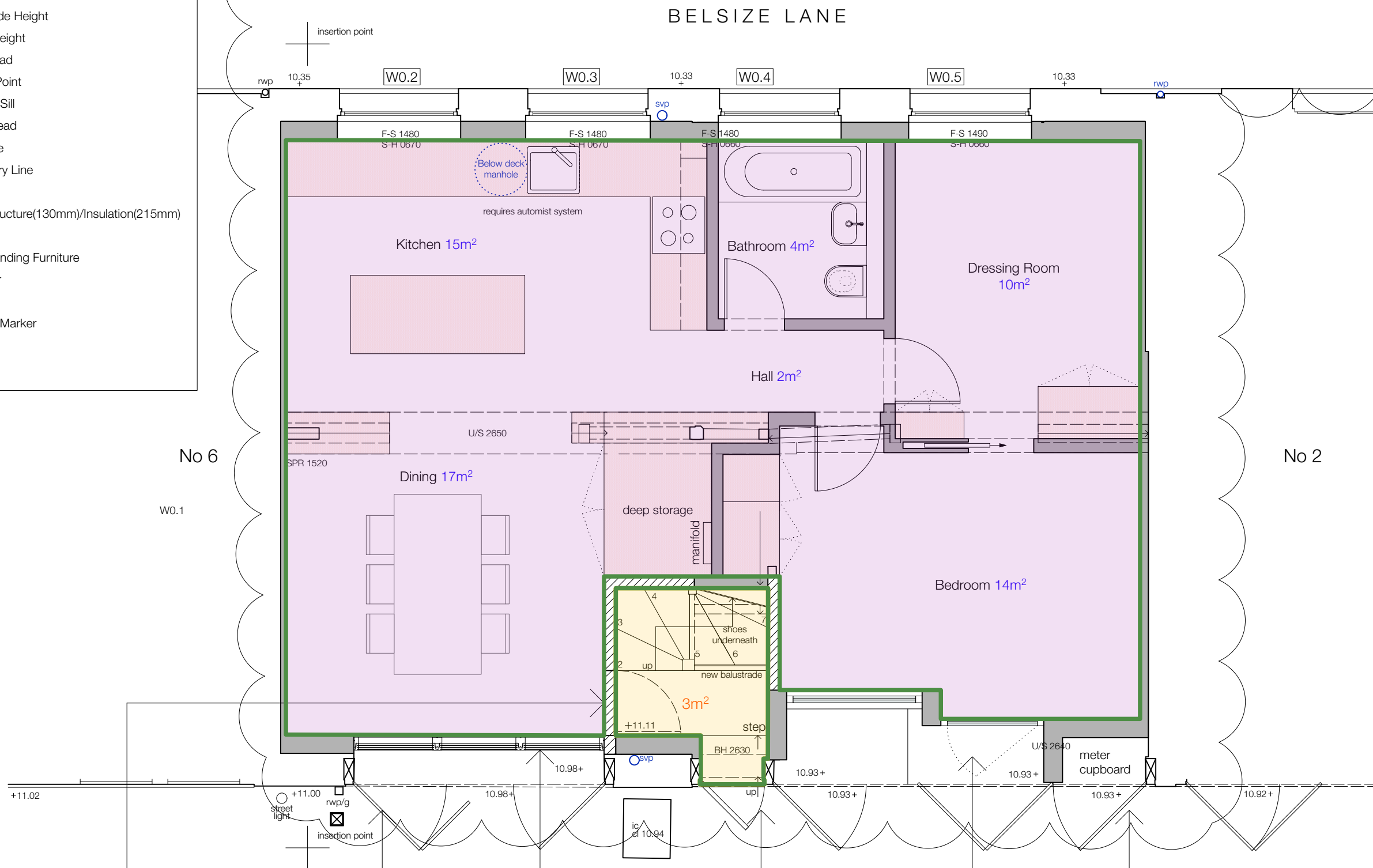
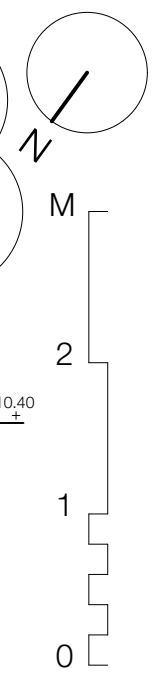
**KEY:**

- ▽ Floor Level
- △ Ceiling Level
- svp Soil and Vent Pipe
- rwp Rain Water Pipe
- ic Inspection Cover
- cl Cover Level
- u/s Underside Height
- BH 2000 Beam Height
- AH 2500 Arch Head
- SPR 1800 Spring Point
- FS 0780 Floor to Sill
- SH 1850 Sill to Head
- Drainage
- - - Boundary Line
- - - Above
- New Structure(130mm)/Insulation(215mm)
- Joinery
- Free-standing Furniture
- ▭ Radiator
- ⊙ Section Marker

- Ground Floor Flat GIA
- Upper Floor Flat GIA
- Area at 2.5m high and above

Total Ground Floor Flat GIA : 65m<sup>2</sup>  
 Ground Floor Flat GIA at 2.5m high and above = 100% of GIA

Total GIA of Upper Floor Flat: 100m<sup>2</sup>  
 Total GIA of Upper Floor Flat at 2.5m high and above: = 75% of GIA  
 Refer to P100, P110 & P120



Blocked door opening.

Existing Garage Doors Retained

Entrance to the Ground Floor Flat through the glazed door.

New insulated door. Entrance to the Upper Floor Flat

External Bike Store Behind Garage Doors

Existing Garage Doors Retained

**BELSIZE COURT GARAGES**

<b>SANYA POLESCUK ARCHITECTS</b> 8a BELSIZE COURT GARAGES LONDON NW3 5AJ T:0207 431 8580 e-mail:enquiries@polescukarchitects.com	REV: PL2	NO: P100	DATE: 01 October 2024	PAPER: A3	SCALE: 1:50	TITLE: Ground Floor Plan (as built)
PROJECT: 4 Belsize Court Garages, London						