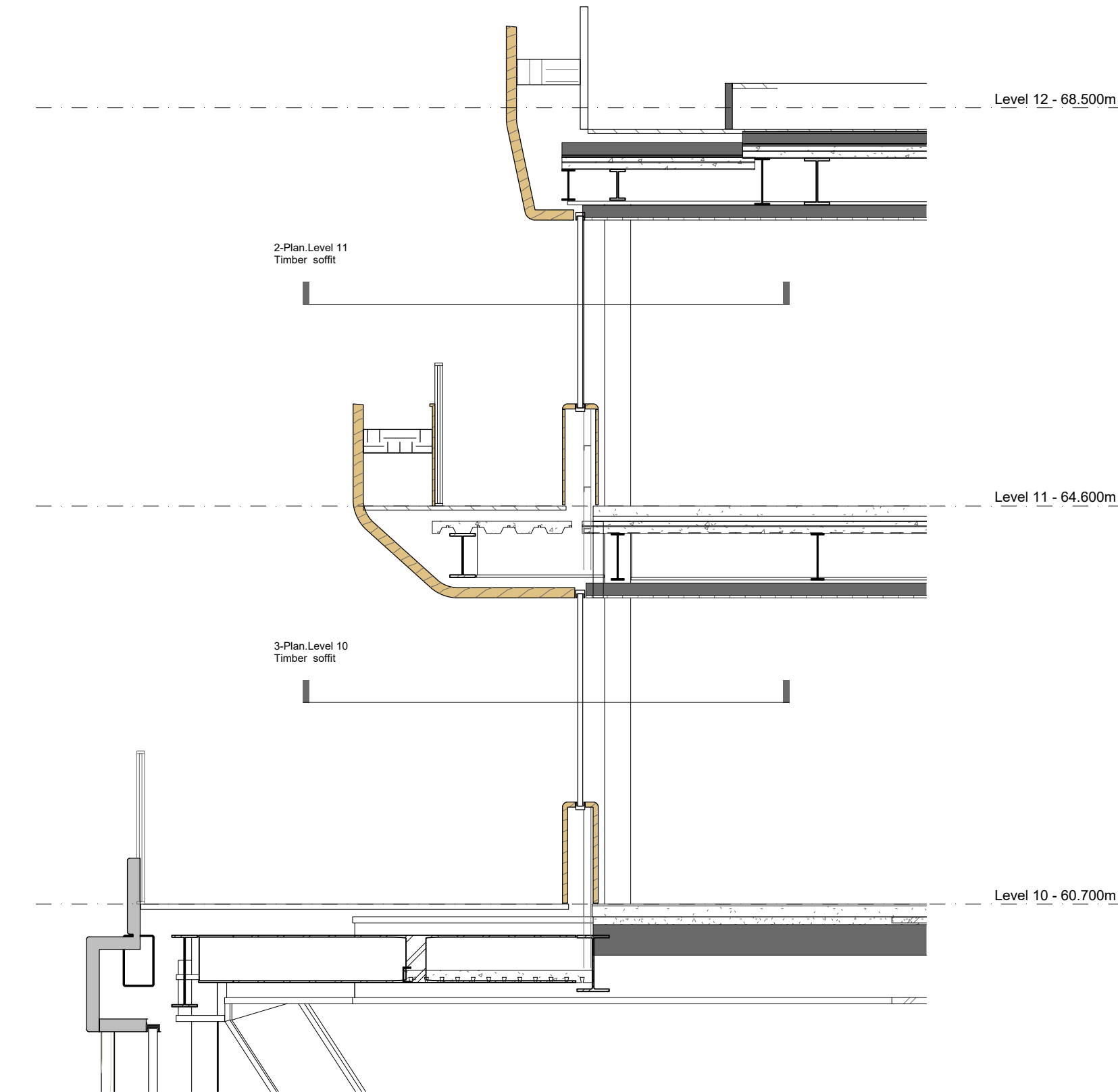
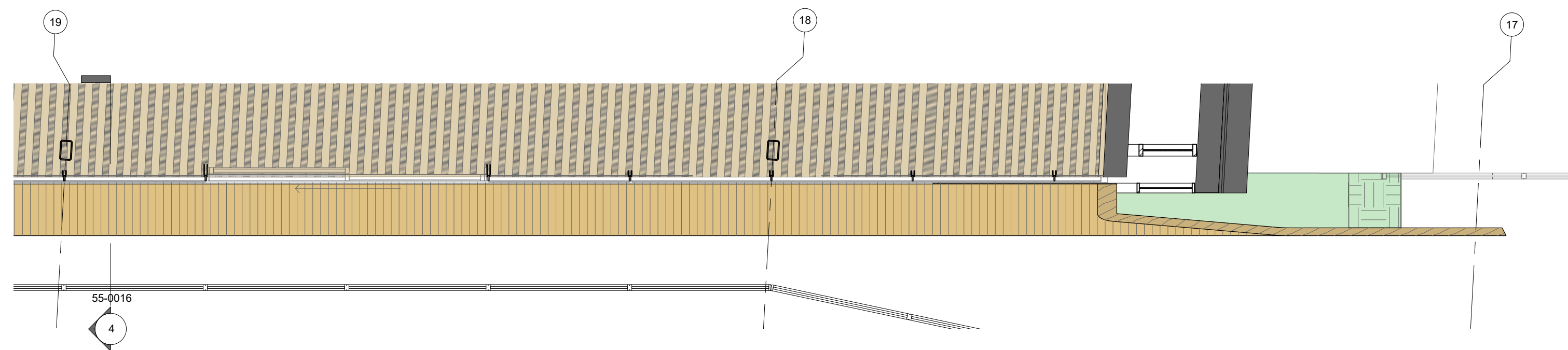


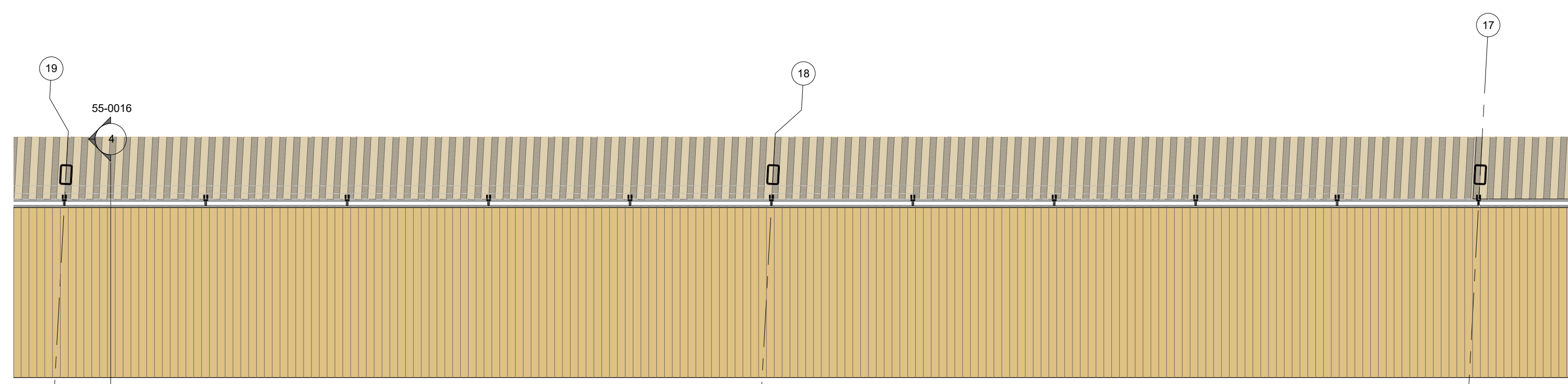
① West Elevation - Timber Roof Soffit



④ Section - Timber Roof Soffit



② Plan - Level 11 - Timber Soffit



③ Plan - Level 10 - Timber Soffit

General Notes

THIS DRAWING IS FOR DESIGN INTENT PURPOSES ONLY. NOT FOR CONSTRUCTION.

HEATHERWICK STUDIO TAKE NO RESPONSIBILITY FOR ANY DIMENSIONS OBTAINED BY MEASURING OR SCALING FROM THIS DRAWING.

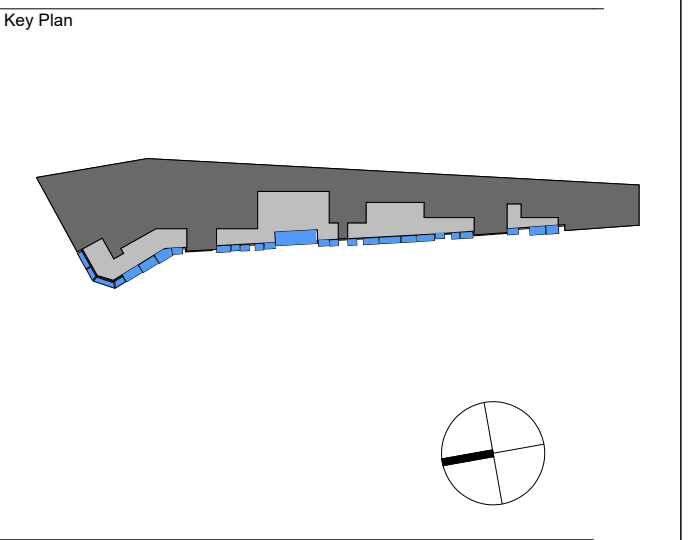
ALL DIMENSIONS AND LEVELS ARE TO BE CHECKED ON SITE BEFORE PROCEEDING.

THIS DRAWING MUST BE READ IN CONJUNCTION WITH RELEVANT CONSULTANT AND SPECIALIST DRAWINGS.

ALL STRUCTURE, MEP, LIGHTING, PLANTING CIVILS & DRAINAGE ARE INDICATIVE ONLY. THE SIZING OF STRUCTURAL AND SERVICES ELEMENTS MUST BE CHECKED AGAINST THE RELEVANT ENGINEERS DRAWINGS.

THIS DRAWING IS THE COPYRIGHT OF HEATHERWICK STUDIO AND IS NOT TO BE REPRODUCED IN ANY FORM WITHOUT PRIOR WRITTEN CONSENT.

GROUND FLOOR FACADE DRAWN BY HEATHERWICK STUDIO. ALL OTHER ELEMENTS OF THE DRAWINGS ARE PREPARED BY BDP AS ORIGINALLY SUBMITTED IN THE 2017 RESERVED MATTERS APPLICATION AND SUBSEQUENT NON-MATERIAL AMENDMENTS. HEATHERWICK STUDIO SHALL HAVE NO LIABILITY WHATSOEVER FOR ANY ERRORS, DEFECTS AND/OR DEFICIENCIES IN BDP DRAWINGS OR BASE BUILD INFORMATION.



- Sheet Notes**
- Key**
- 1 Steel Mullion
 - 2 Timber Mullion
 - 3 Black Painted Metal Structure
 - 4 Black Metal Cladding
 - 5 Pre-cast Concrete Spandrel
 - 6 Main Facade Glazing Panel
 - 7 Back Painted Dark Grey Glass Panel
 - 8 Steel Balustrade with Wabnet Wire Mesh Panels
 - 9 Roof Facade Glazing Panel
 - 10 Timber Wall Cladding
 - 11 GRC rainscreen cladding skirting
 - 12 Weathering Steel Cladding
 - 13 Glass Balustrade
 - 14 Ground Facade Glazing Panel
 - 15 Dark Grey Metal Louvre Screen
 - 16 Glassfibre Reinforced Concrete Cladding
 - 17 Anodised Aluminium Architectural Louvres in Varied Bronze Tones
 - 18 Mass Timber Portal Frame
 - 19 Wabnet Wire Mesh Panels
 - 20 Operable Timber Mullion
 - 21 Dark Grey Metal Panel
 - 22 Bronze Colour Metal Cladding Louvre
 - 23 South Anchor Glazed Sliding and Fixed Panels
 - 24 Intergrated Louvre in Spandrel Soffit
 - 25 Timber Hook Panels
- D1 Glass Sliding Door
D2 Dark Grey Metal Louvre Door
D3 Glass Hinged Door
D4 Glazed Garden Maintenance Door
D5 Glazed Garden Accessible Door
D6 Dark Grey Back Painted Glass Door
D7 Weathering Steel Door
D8 Weathered Steel Structure & Vertical Bilfolding Doors
D9 Bilfolding Doors
- Note: Please see Gillespies Drawing Ref: KXC-A-001-T-GIL-01-0011 for Garden Planting Design.

Sheet Notes

Note: For further information on Materials refer to Detailed Information Pack 1
For further information on External Lighting refer to Detailed Information Pack 2

SCALE BAR 1:50

DATE	DESCRIPTION
P01 16/03/22	Issue for Planning

UK-LON-KGX1

GOOGLE INC
16-21 Stables Street
London, N1C 4AB
TEL: +44 (0)203 6940200

Project Name

Documentation

Development Zone A
Kings Cross Central
York Way
London

Sheet Name

Roof Facade - Timber Trays

Project No.	Sheet No.
KXC	HS-RP-XX-AS-T- 55-0016

Date Drawn	Rev Date	Revision
11/03/22	16/03/22	P01

Heatherwick studio

55 Argyle Street, London W1H 8EE | T: +44 (0) 20 7833 8800
studio@heatherwick.com | heatherwick.com

General Notes

THIS DRAWING IS FOR DESIGN INTENT PURPOSES ONLY. NOT FOR CONSTRUCTION.

HEATHERWICK STUDIO TAKE NO RESPONSIBILITY FOR ANY DIMENSIONS OBTAINED BY MEASURING OR SCALING FROM THIS DRAWING.

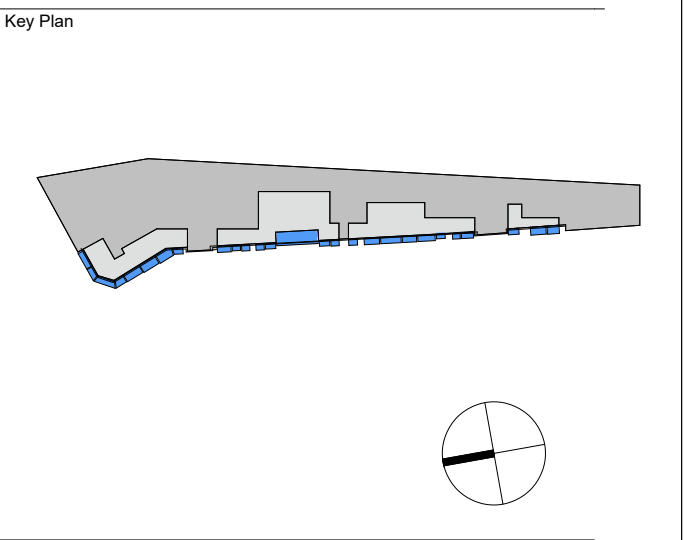
ALL DIMENSIONS AND LEVELS ARE TO BE CHECKED ON SITE BEFORE PROCEEDING.

THIS DRAWING MUST BE READ IN CONJUNCTION WITH RELEVANT CONSULTANT AND SPECIALIST DRAWINGS.

ALL STRUCTURE, MEP, LIGHTING, PLANTING CIVILS & DRAINAGE ARE INDICATIVE ONLY. THE SIZES OF STRUCTURAL AND SERVICES ELEMENTS MUST BE CHECKED AGAINST THE RELEVANT ENGINEERS DRAWINGS.

THIS DRAWING IS THE COPYRIGHT OF HEATHERWICK STUDIO AND IS NOT TO BE REPRODUCED IN ANY FORM WITHOUT PRIOR WRITTEN CONSENT.

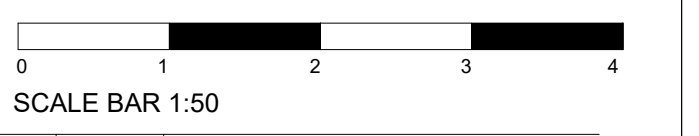
GROUND FLOOR FACADE DRAWN BY HEATHERWICK STUDIO. ALL OTHER ELEMENTS OF THE DRAWINGS ARE PREPARED BY BDP AS ORIGINALLY SUBMITTED IN THE 2017 RESERVED MATTERS APPLICATION AND SUBSEQUENT NON-MATERIAL AMENDMENTS. HEATHERWICK STUDIO SHALL HAVE NO LIABILITY WHATSOEVER FOR ANY ERRORS, DEFECTS AND/OR DEFICIENCIES IN BDP DRAWINGS OR BASE BUILD INFORMATION.



- Sheet Notes**
- 1 Steel Mullion
 - 2 Black Painted Metal Structure
 - 3 Black Painted Metal Structure
 - 4 Black Metal Cladding
 - 5 Pre-cast Concrete Spandrel
 - 6 Main Facade Glazing Panel
 - 7 Back Painted Dark Grey Glass Panel
 - 8 Steel Balustrade with Webnet Wire Mesh Panels
 - 9 Roof Facade Glazing Panel
 - 10 Timber Wall Cladding
 - 11 GRC rainscreen clad skirting
 - 12 Weathering Steel Cladding
 - 13 Glass Balustrade
 - 14 Dark Grey Metal Louvre Screen
 - 15 Ground Facade Glazing Panel
 - 16 Glass Fibre Reinforced Concrete Cladding
 - 17 Anodised Aluminium Architectural Louvres in Varied Bronze Tones
 - 18 Mass Timber Portal Frame
 - 19 Webnet Wire Mesh Panels
 - 20 Operable Timber Mullion
 - 21 Dark Grey Metal Panel
 - 22 Bronze Colour Metal Cladding Louvre
 - 23 South Anchor Glazed Sliding and Fixed Panels
 - 24 Integrated Louvre in Spandrel Soffit
 - 25 Timber hook on panels

- Sheet Notes**
- D1 Glass Sliding Door
 - D2 Dark Grey Metal Louvre Door
 - D3 Glass Hinged Door
 - D4 Glazed Garden Maintenance Door
 - D5 Glazed Garden Accessible Door
 - D6 Dark Grey Backpainted Glass Door
 - D7 Weathering Steel Door
 - D8 Weathered Steel Structure & Vertical Blfolding Doors
 - D9 Blfolding Doors

Note: Please see Gillespies Drawing Ref: KXC-A-001-T-GIL-01-00011 for Garden Planting Design.



REV	DATE	DESCRIPTION
P01	16/03/22	Issue for Planning



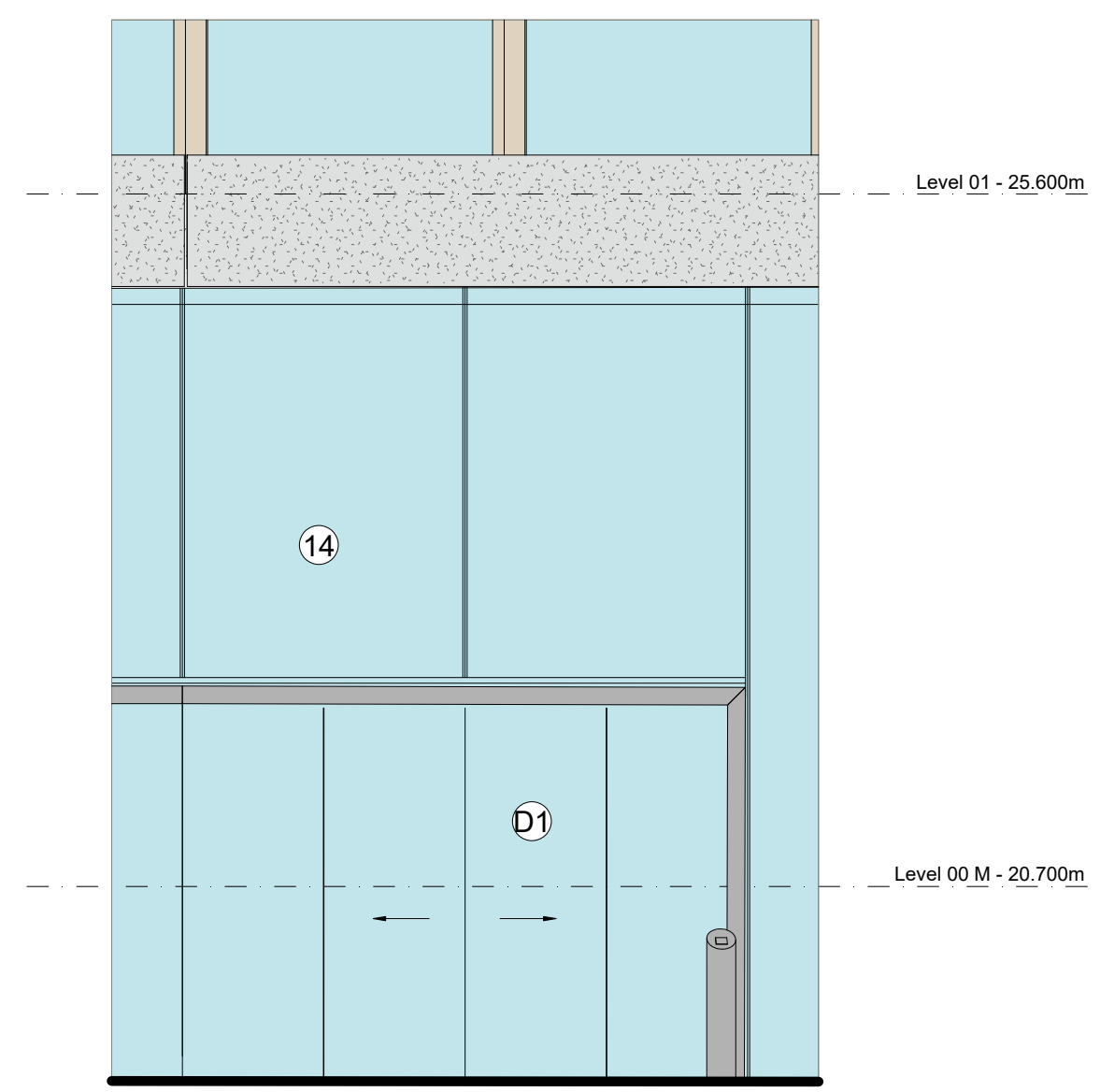
Project Name
Documentation

Development Zone A
Kings Cross Central
York Way
London

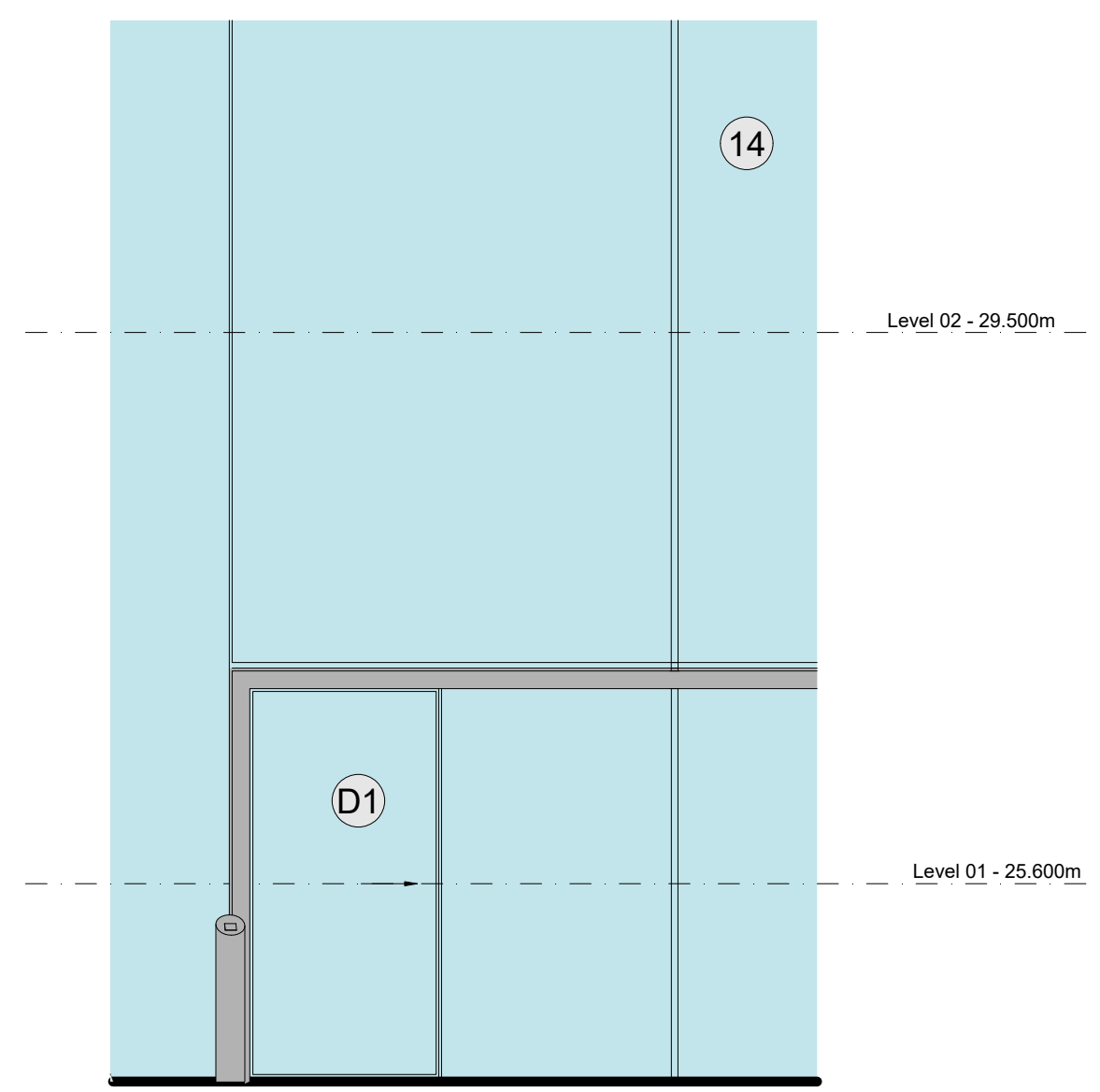
Sheet Name
External Door Types - Sheet 1

Project No.	Sheet No.	
KXC	HS-XX-XX-AS-T-	55-0017
Status	For Approval	
Date Drawn	Rev Date	Revision
03/11/22	16/03/22	P01
Size	Scale	Drawn By
A1	1:50	MO
		Checked
		JC

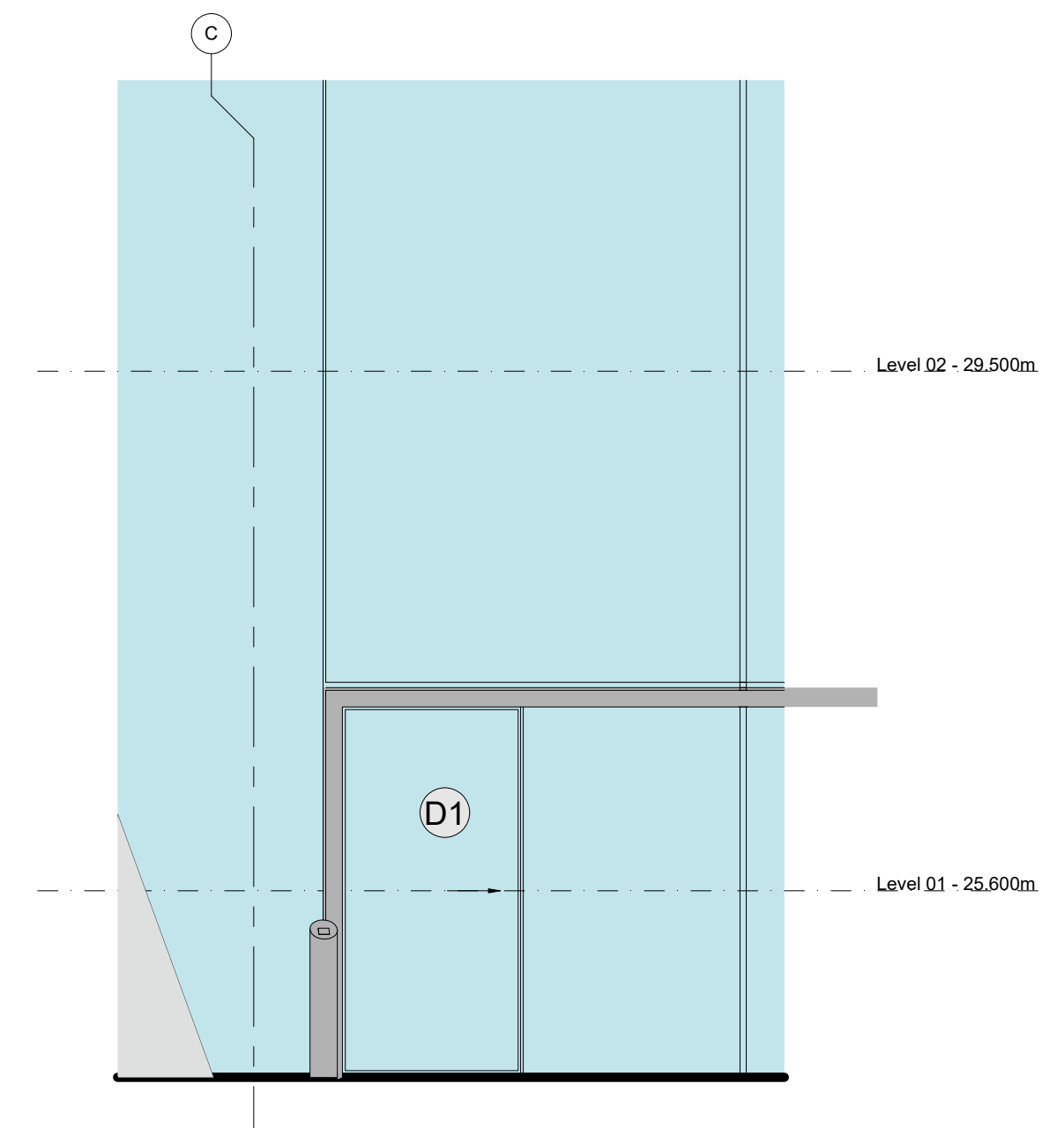
Heatherwick studio
55 Argyle Street, London WC1H 8EE | T: +44 (0) 20 7833 8800
studio@heatherwick.com | heatherwick.com



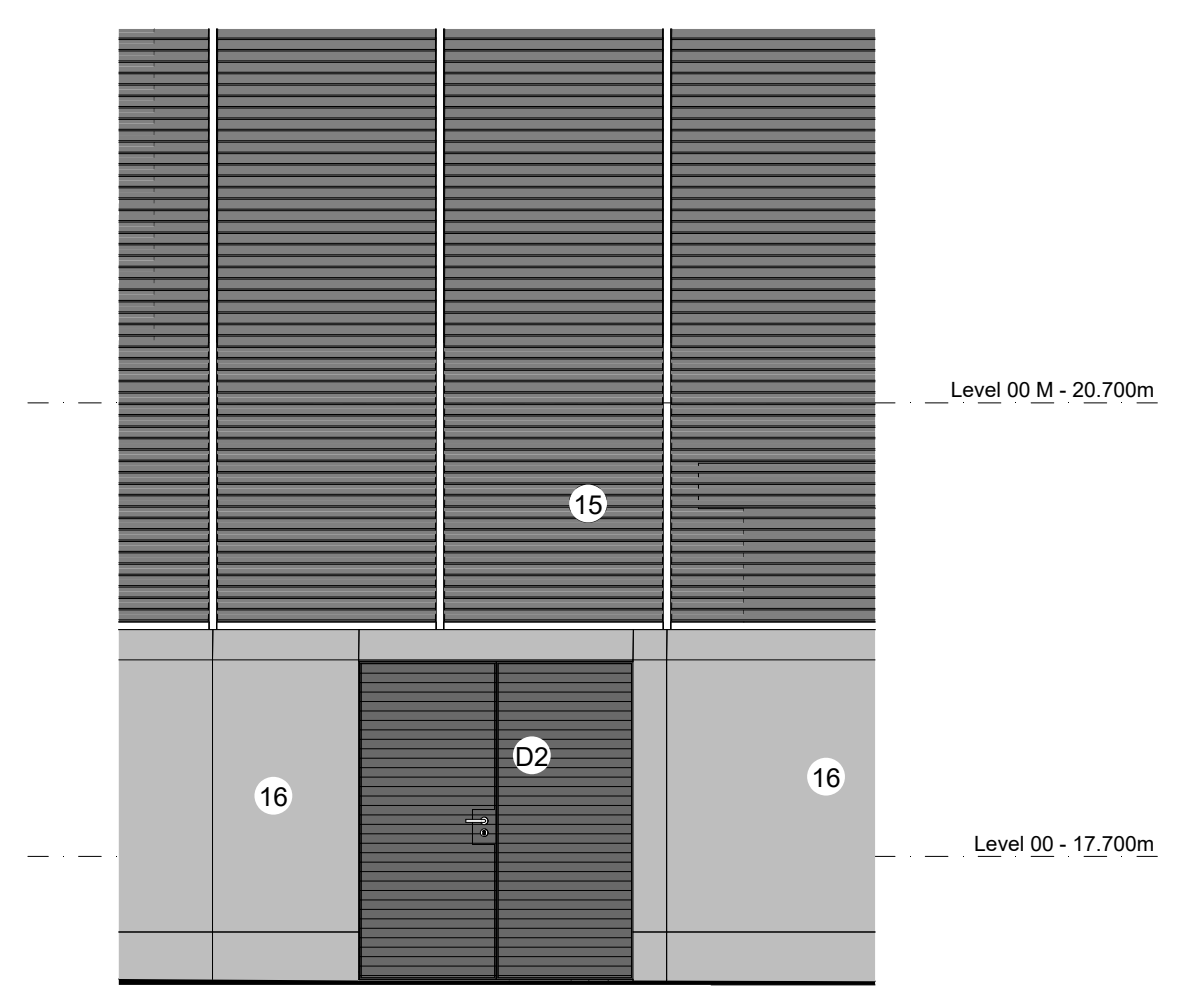
6 Elevation - Main Entrance



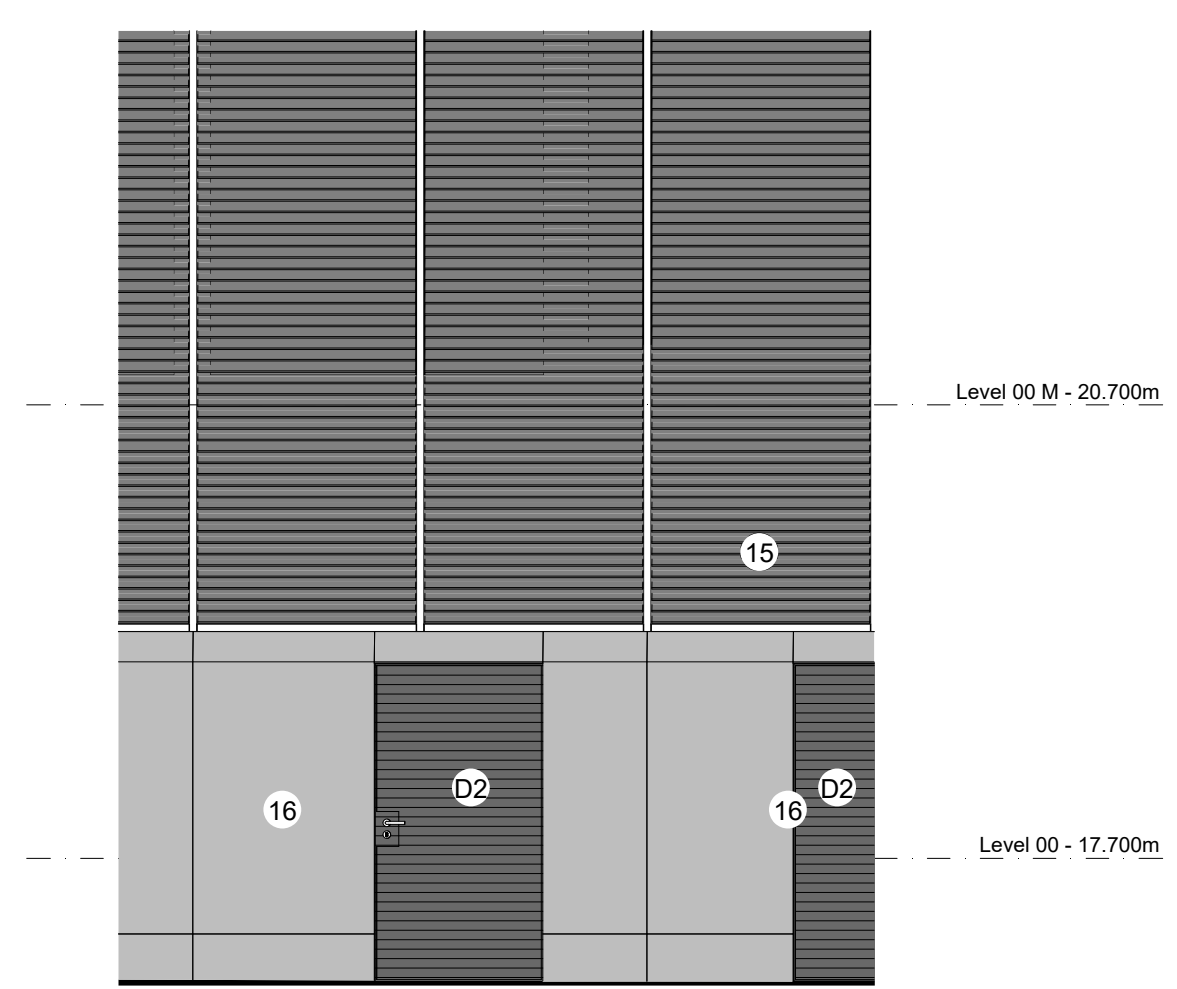
4 Elevation - Event Centre Entrance



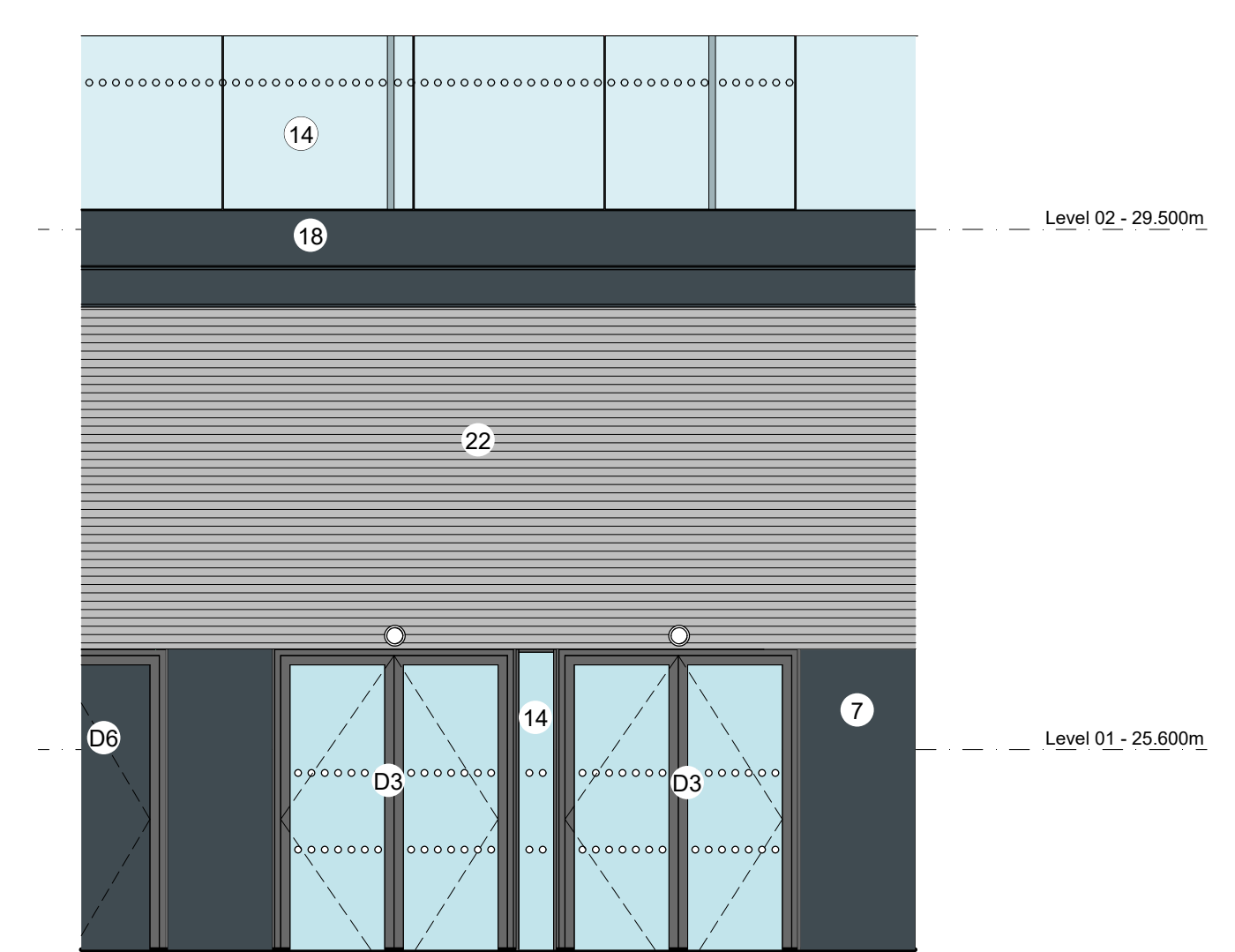
2 Elevation - Main North Entrance



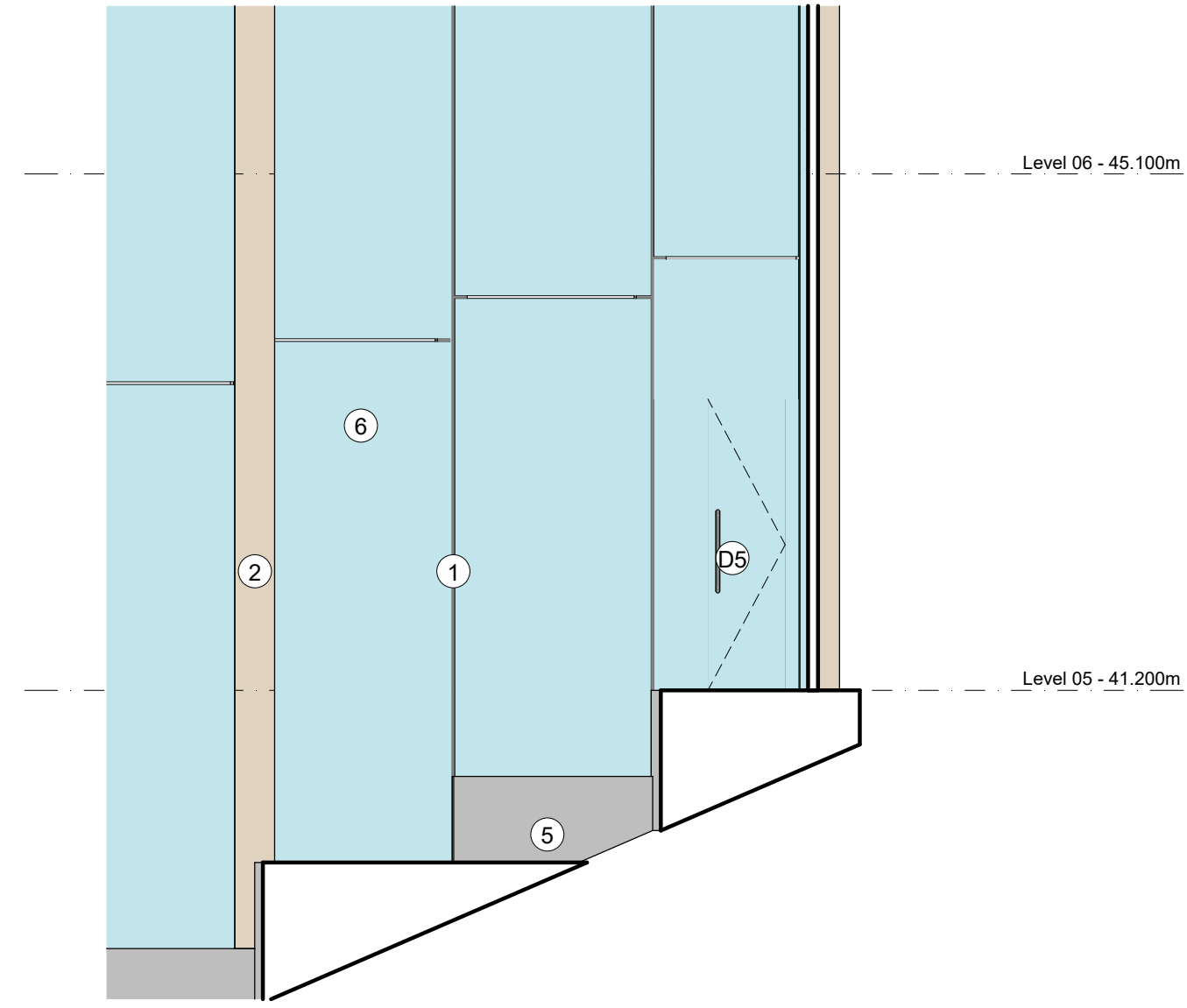
5 Elevation - Door Type G - East



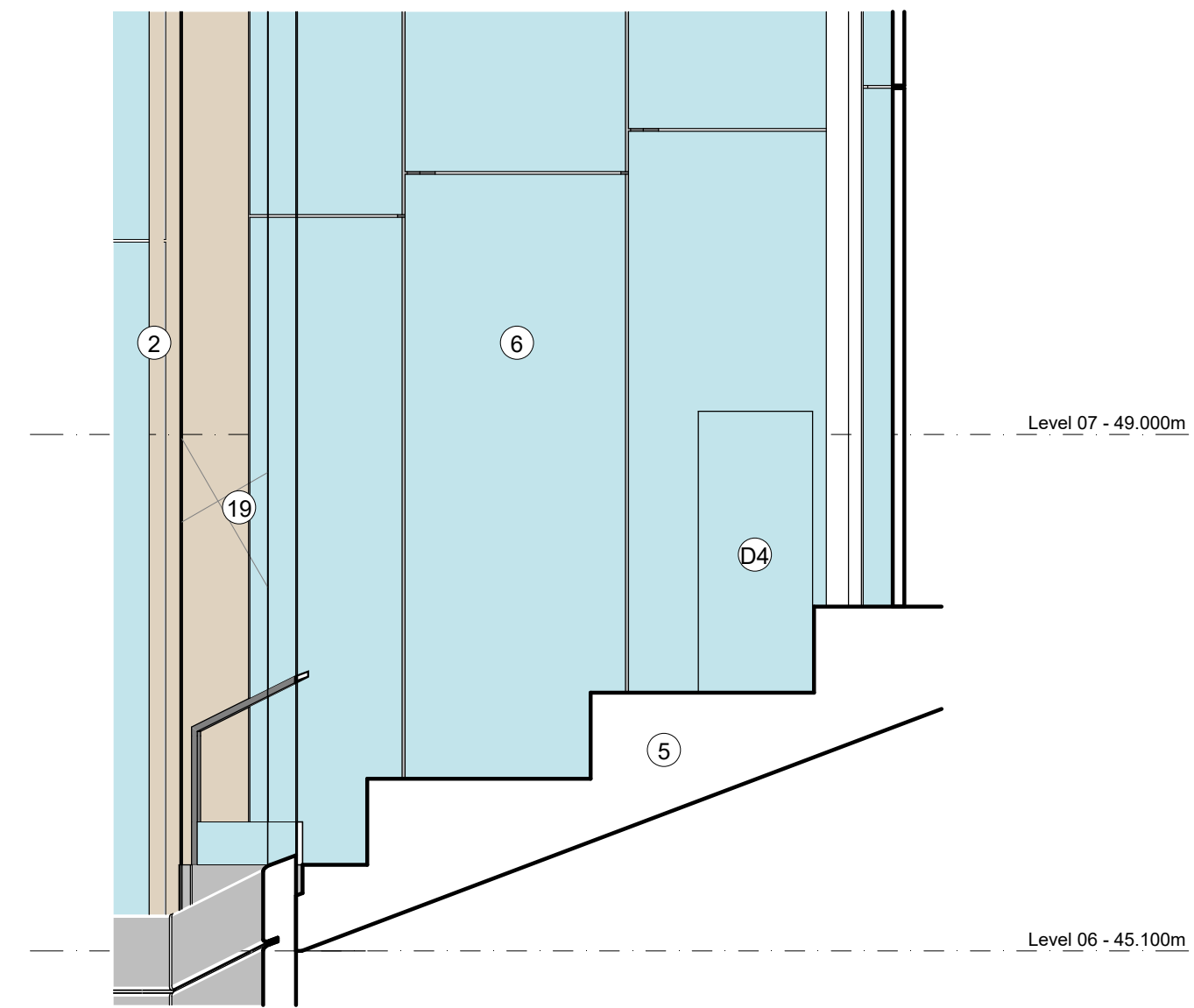
3 Elevation - Door Type H - East



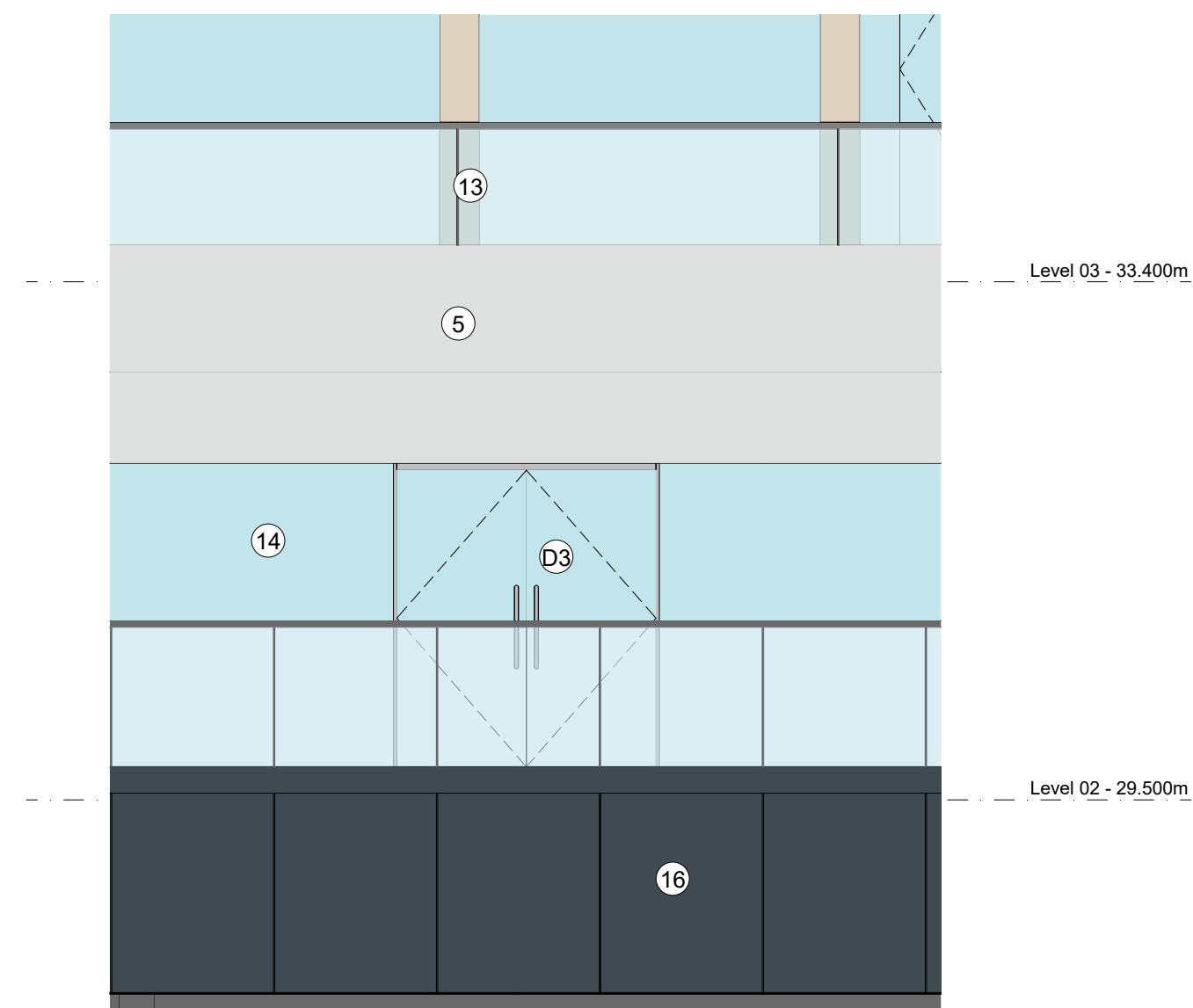
1 Elevation - Door Type I



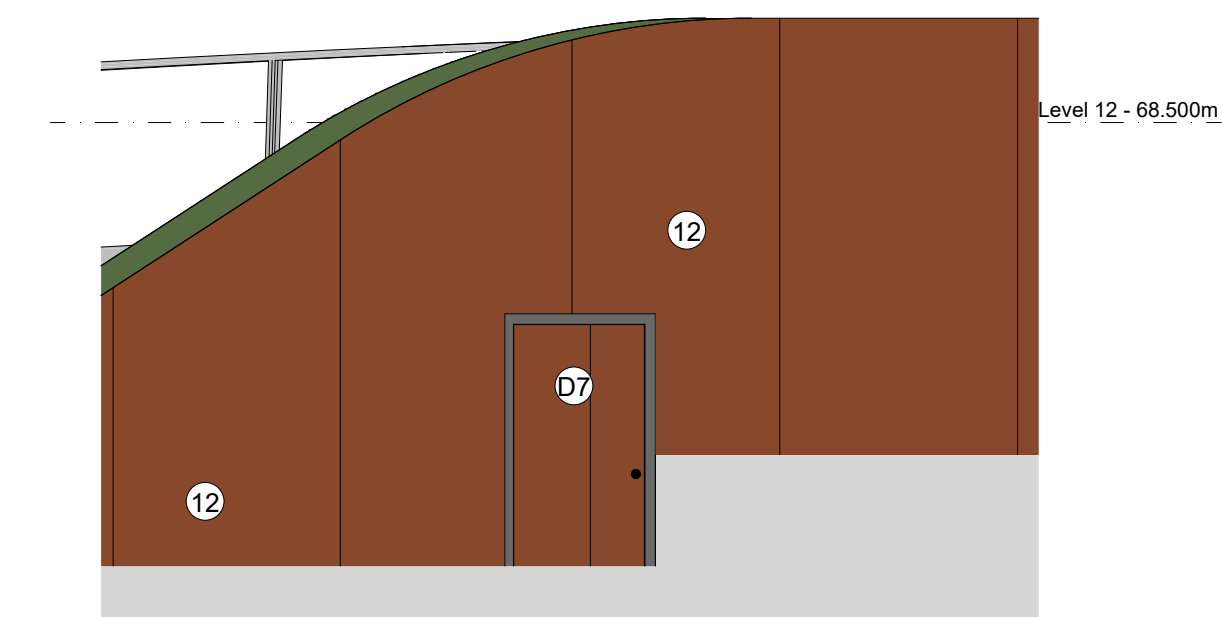
4 Elevation - Rectangular Garden Door



2 Elevation - Triangular Garden Door

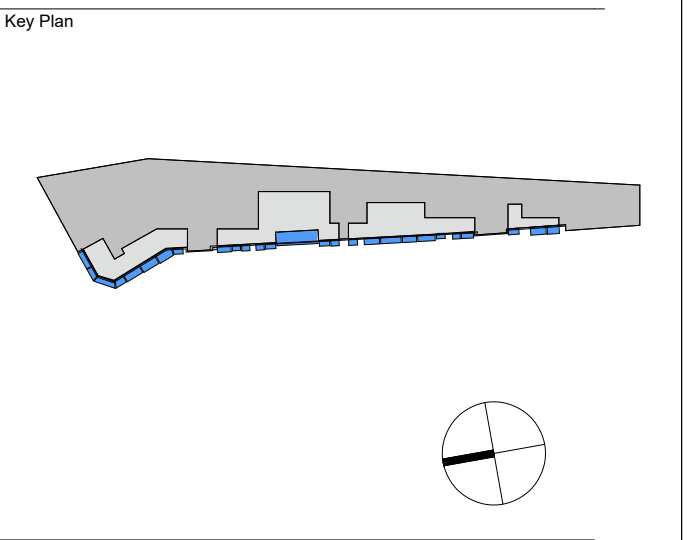


3 Elevation - Door



1 Elevation - Roof door

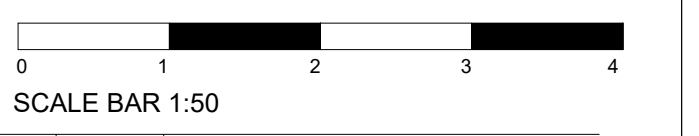
General Notes
 THIS DRAWING IS FOR DESIGN INTENT PURPOSES ONLY. NOT FOR CONSTRUCTION.
 HEATHERWICK STUDIO TAKE NO RESPONSIBILITY FOR ANY DIMENSIONS OBTAINED BY MEASURING OR SCALING FROM THIS DRAWING.
 ALL DIMENSIONS AND LEVELS ARE TO BE CHECKED ON SITE BEFORE PROCEEDING.
 THIS DRAWING MUST BE READ IN CONJUNCTION WITH RELEVANT CONSULTANT AND SPECIALIST DRAWINGS.
 ALL STRUCTURE, MEP, LIGHTING, PLANTING CIVILS & DRAINAGE ARE INDICATIVE ONLY. THE SIZES OF STRUCTURAL AND SERVICES ELEMENTS MUST BE CHECKED AGAINST THE RELEVANT ENGINEERS DRAWINGS.
 THIS DRAWING IS THE COPYRIGHT OF HEATHERWICK STUDIO AND IS NOT TO BE REPRODUCED IN ANY FORM WITHOUT PRIOR WRITTEN CONSENT.
 GROUND FLOOR FACADE DRAWN BY HEATHERWICK STUDIO. ALL OTHER ELEMENTS OF THE DRAWINGS ARE PREPARED BY BDP AS ORIGINALLY SUBMITTED IN THE 2017 RESERVED MATTERS APPLICATION AND SUBSEQUENT NON-MATERIAL AMENDMENTS. HEATHERWICK STUDIO SHALL HAVE NO LIABILITY WHATSOEVER FOR ANY ERRORS, DEFECTS AND/OR DEFICIENCIES IN BDP DRAWINGS OR BASE BUILD INFORMATION.



- Sheet Notes**
- 1 Steel Mullion
 - 2 Timber Mullion
 - 3 Black Painted Metal Structure
 - 4 Black Metal Cladding
 - 5 Pre-cast Concrete Spandrel
 - 6 Main Facade Glazing Panel
 - 7 Back Painted Dark Grey Glass Panel
 - 8 Steel Balustrade with Webnet Wire Mesh Panels
 - 9 Roof Facade Glazing Panel
 - 10 Timber Wall Cladding
 - 11 GRC rainscreen clad skirting
 - 12 Weathering Steel Cladding
 - 13 Glass Balustrade
 - 14 Ground Facade Glazing Panel
 - 15 Dark Grey Metal Louvre Screen
 - 16 Glass Fibre Reinforced Concrete Cladding
 - 17 Anodised Aluminium Architectural Louvres in Varied Bronze Tones
 - 18 Mass Timber Portal Frame
 - 19 Webnet Wire Mesh Panels
 - 20 Operable Timber Mullion
 - 21 Dark Grey Metal Panel
 - 22 Bronze Colour Metal Cladding Louvre
 - 23 South Anchor Glazed Sliding and Fixed Panels
 - 24 Integrated Louvre in Spandrel Soffit
 - 25 Timber hook on panels

- Sheet Notes**
- D1 Glass Sliding Door
 - D2 Dark Grey Metal Louvre Door
 - D3 Glass Hinged Door
 - D4 Glazed Garden Maintenance Door
 - D5 Glazed Garden Accessible Door
 - D6 Dark Grey Backpainted Glass Door
 - D7 Weathering Steel Door
 - D8 Weathered Steel Structure & Vertical Blfolding Doors
 - D9 Blfolding Doors

Note: Please see Gillespies Drawing Ref: KXC-A-001-T-GIL-81-00011 for Garden Planting Design.



REV	DATE	DESCRIPTION
P01	16/03/22	Issue for Planning

REV	DATE	DESCRIPTION
P01	16/03/22	Issue for Planning



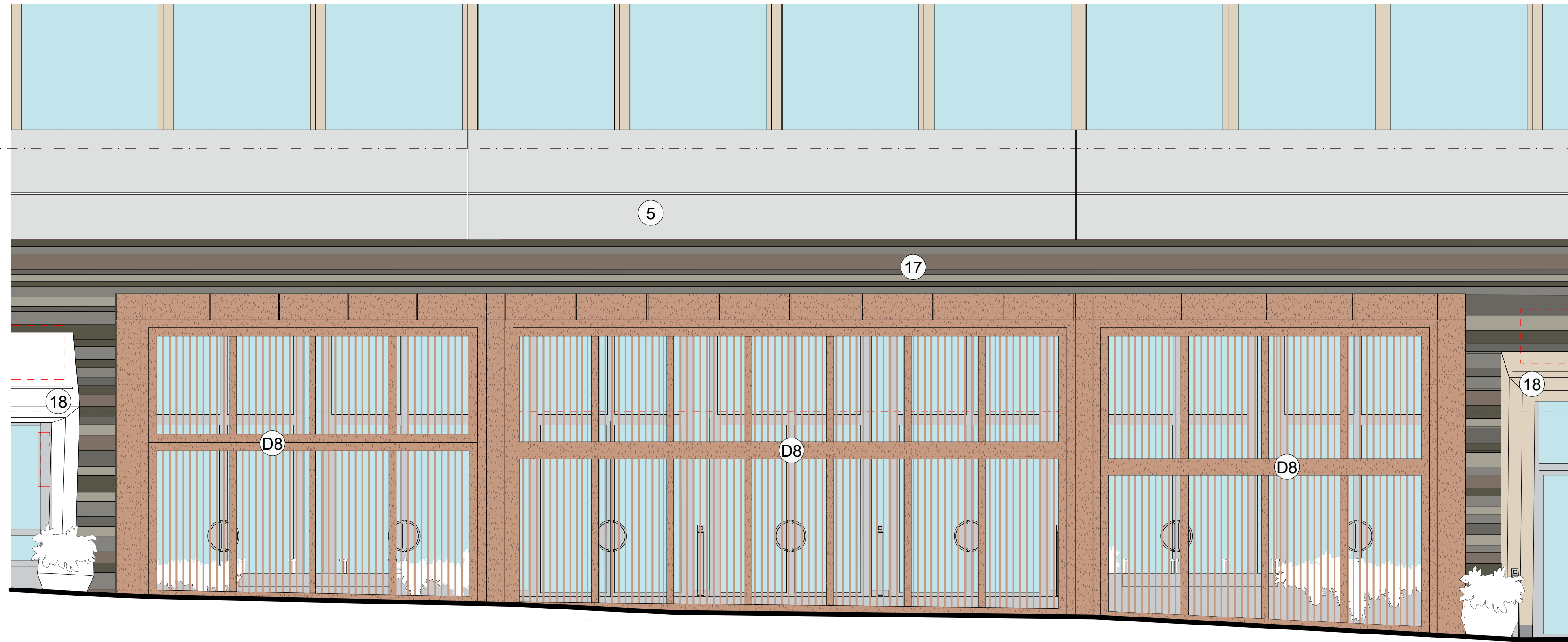
Project Name
Documentation
 Development Zone A
 Kings Cross Central
 York Way
 London

Sheet Name
 External Door Types - Sheet 2

Project No.	Sheet No.	
KXC	HS-XX-XX-AS-T-	55-0018
Status	For Approval	

Date Drawn	03/11/22	Rev Date	16/03/22	Revision	P01
Size	A1	Scale	1:50	Drawn By	MO
				Checked	JC

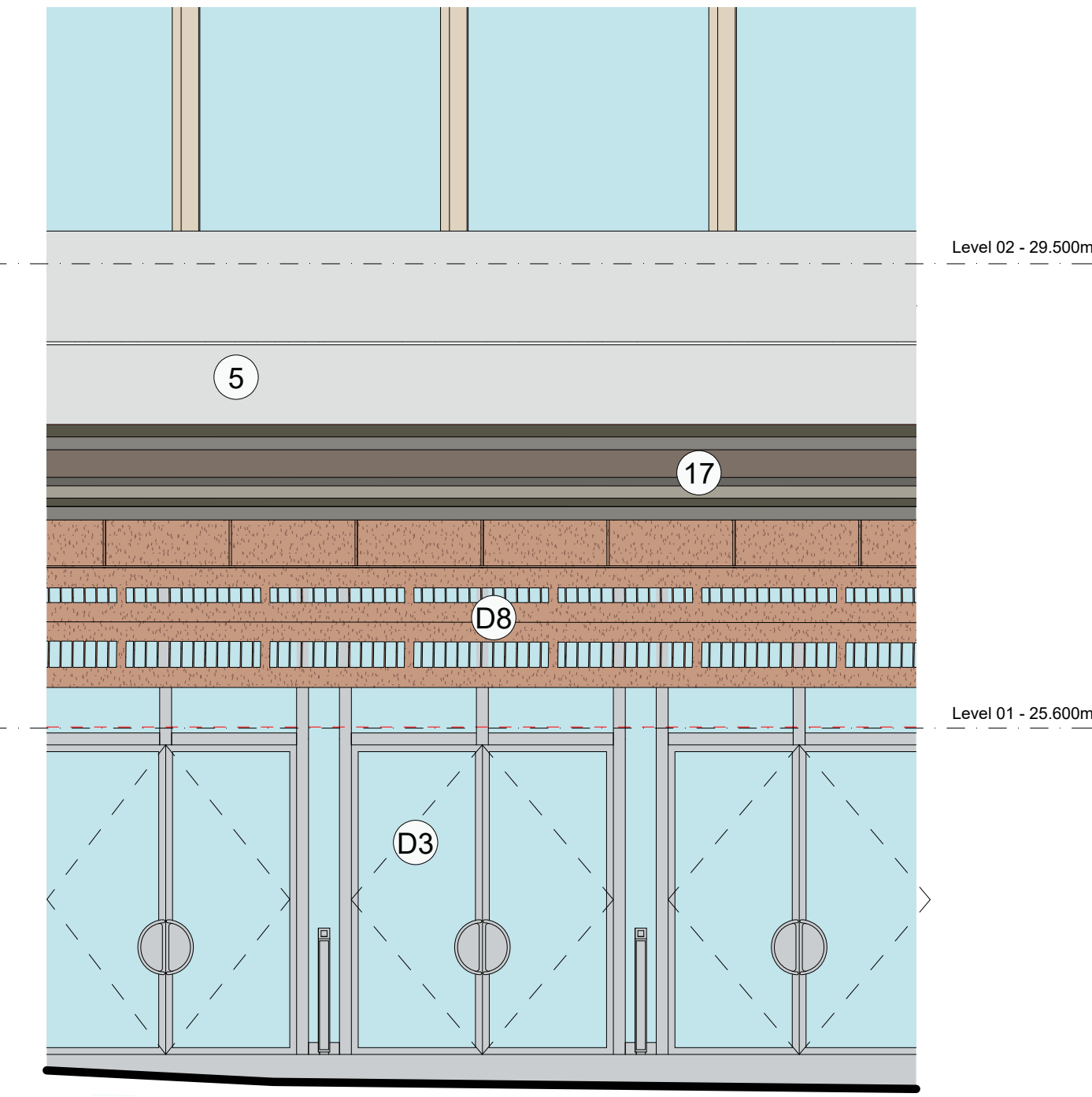
Heatherwick studio
 55 Argyle Street, London WC1H 8EE | T: +44 (0) 20 7833 8800
 studio@heatherwick.com | heatherwick.com



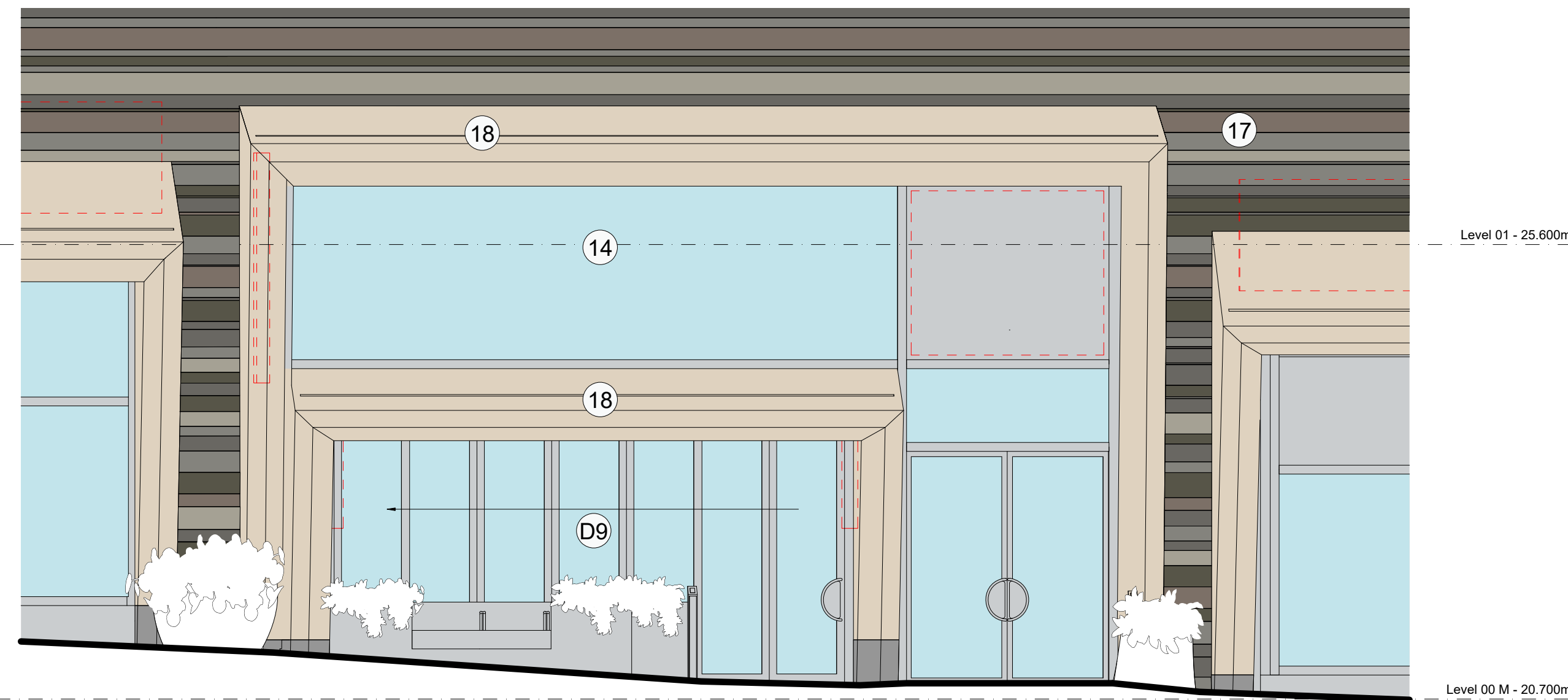
4 Elevation - Market Hall Gate Left

5 Elevation - Market Hall Gate Central

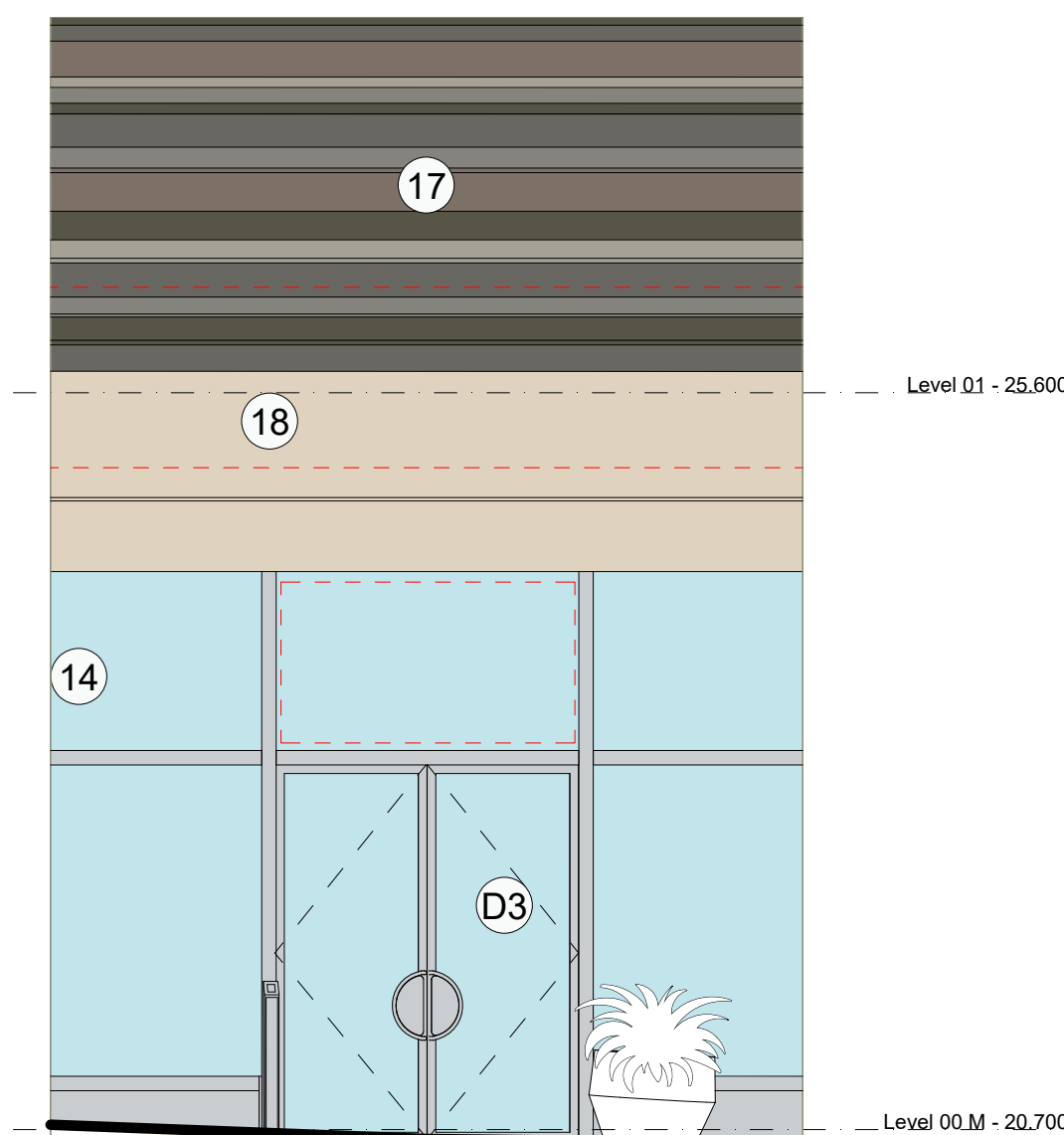
6 Elevation - Market Hall Gate Right



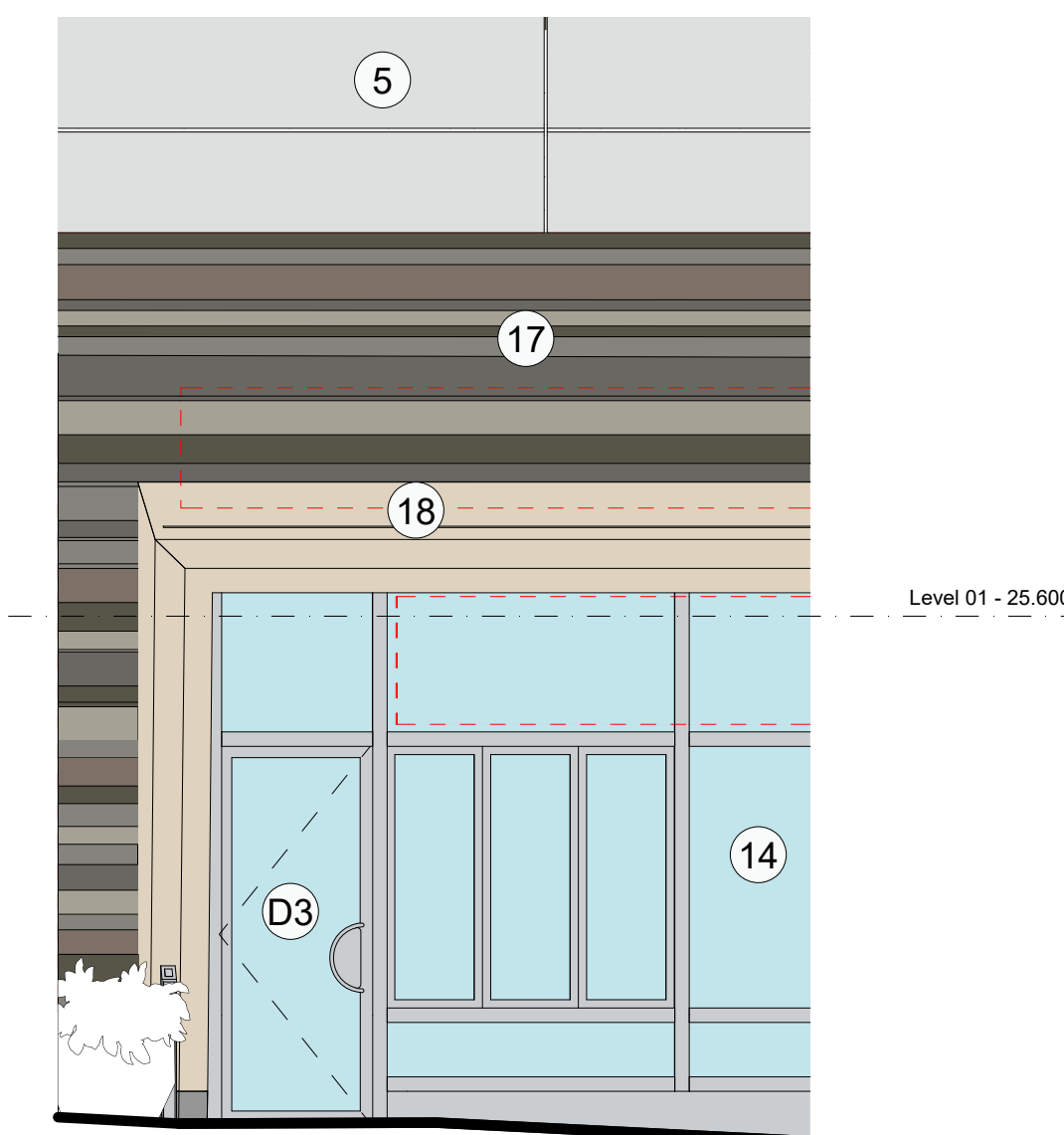
2 Elevation - Market Hall Door



7 Elevation - Bifolding Door

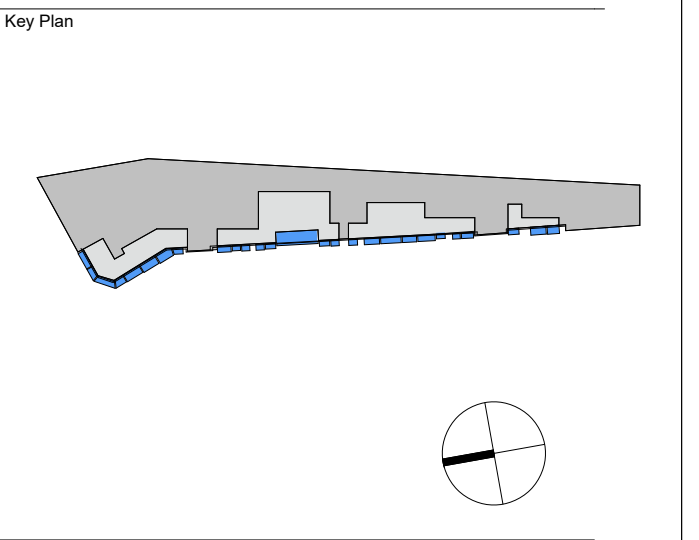


3 Elevation - External Double Leaf Glass Door



1 Elevation - External Single Leaf Glass Door

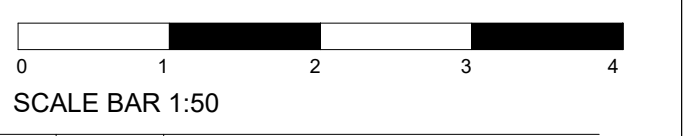
General Notes
 THIS DRAWING IS FOR DESIGN INTENT PURPOSES ONLY. NOT FOR CONSTRUCTION.
 HEATHERWICK STUDIO TAKE NO RESPONSIBILITY FOR ANY DIMENSIONS OBTAINED BY MEASURING OR SCALING FROM THIS DRAWING.
 ALL DIMENSIONS AND LEVELS ARE TO BE CHECKED ON SITE BEFORE PROCEEDING.
 THIS DRAWING MUST BE READ IN CONJUNCTION WITH RELEVANT CONSULTANT AND SPECIALIST DRAWINGS.
 ALL STRUCTURE, MEP, LIGHTING, PLANTING CIVILS & DRAINAGE ARE INDICATIVE ONLY. THE SIZING OF STRUCTURAL AND SERVICES ELEMENTS MUST BE CHECKED AGAINST THE RELEVANT ENGINEERS DRAWINGS.
 THIS DRAWING IS THE COPYRIGHT OF HEATHERWICK STUDIO AND IS NOT TO BE REPRODUCED IN ANY FORM WITHOUT PRIOR WRITTEN CONSENT.
 GROUND FLOOR FACADE DRAWN BY HEATHERWICK STUDIO. ALL OTHER ELEMENTS OF THE DRAWINGS ARE PREPARED BY BDP AS ORIGINALLY SUBMITTED IN THE 2017 RESERVED MATTERS APPLICATION AND SUBSEQUENT NON-MATERIAL AMENDMENTS. HEATHERWICK STUDIO SHALL HAVE NO LIABILITY WHATSOEVER FOR ANY ERRORS, DEFECTS AND/OR DEFICIENCIES IN BDP DRAWINGS OR BASE BUILD INFORMATION.



- Sheet Notes**
- Steel Mullion
 - Timber Mullion
 - Black Painted Metal Structure
 - Black Metal Cladding
 - Pre-cast Concrete Spandrel
 - Main Facade Glazing Panel
 - Back Painted Dark Grey Glass Panel
 - Steel Balustrade with Webnet Wire Mesh Panels
 - Roof Facade Glazing Panel
 - Timber Wall Cladding
 - GRC rainscreen clad skirting
 - Weathering Steel Cladding
 - Glass Balustrade
 - Ground Facade Glazing Panel
 - Dark Grey Metal Louvre Screen
 - Glass Fibre Reinforced Concrete Cladding
 - Anodised Aluminium Architectural Louvres in Varied Bronze Tones
 - Mass Timber Portal Frame
 - Webnet Wire Mesh Panels
 - Operable Timber Mullion
 - Dark Grey Metal Panel
 - Bronze Colour Metal Cladding Louvre
 - South Anchor Glazed Sliding and Fixed Panels
 - Integrated Louvre in Spandrel Soffit
 - Timber hook on panels

- Sheet Notes**
- D1 Glass Sliding Door
 - D2 Dark Grey Metal Louvre Door
 - D3 Glass Hinged Door
 - D4 Glazed Garden Maintenance Door
 - D5 Glazed Garden Accessible Door
 - D6 Dark Grey Backpainted Glass Door
 - D7 Weathering Steel Door
 - D8 Weathered Steel Structure & Vertical Bifolding Doors
 - D9 Bifolding Doors

Note: Please see Gillespies Drawing Ref: KXC-A-001-T-GIL-81-00011 for Garden Planting Design.



REV	DATE	DESCRIPTION
P01	16/03/22	Issue for Planning

Google
 UK-LON-KGX1
 GOOGLE INC
 16-21 St Giles Street
 London, N1C 4AB
 TEL: +44 (0)203 6942200

Project Name
Documentation
 Development Zone A
 Kings Cross Central
 York Way
 London

Sheet Name
 External Door Types - Sheet 3

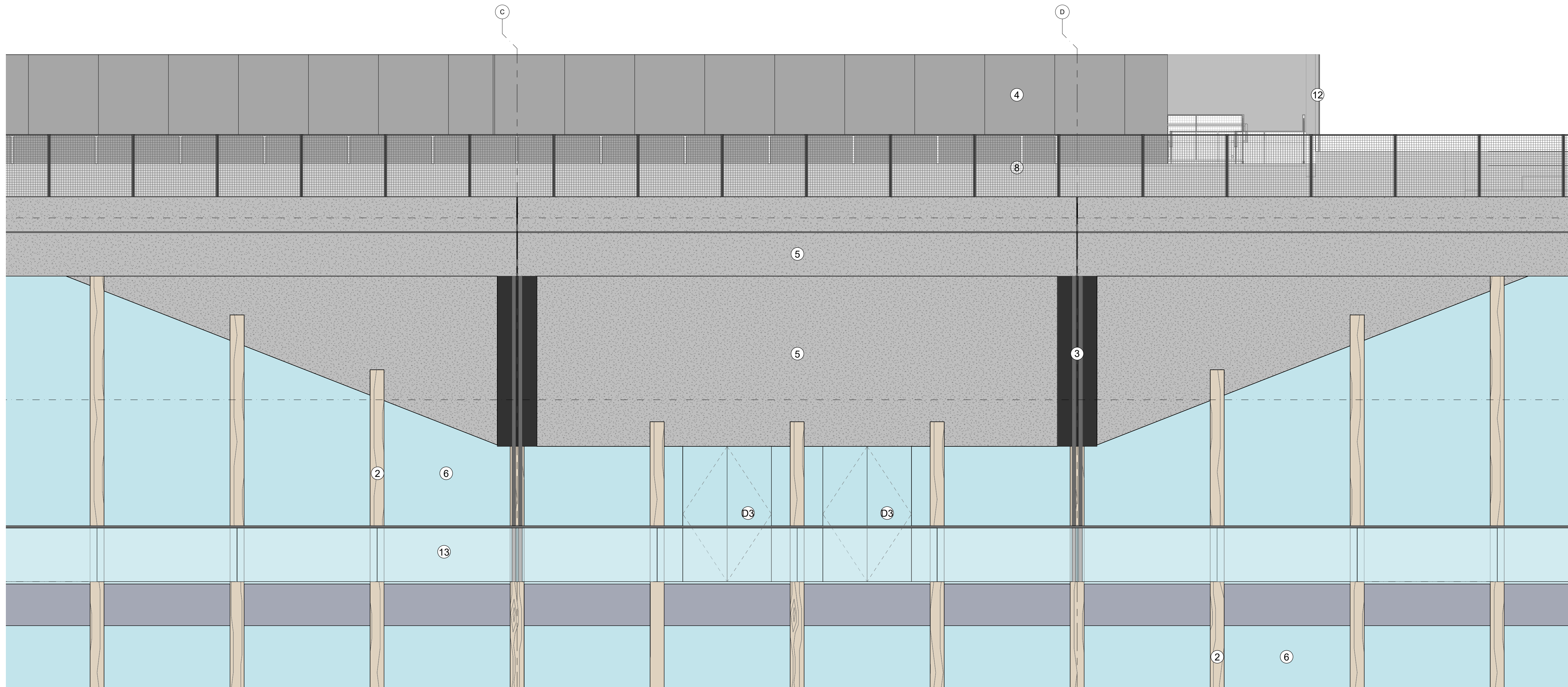
Project No.	Sheet No.
KXC	HS-XX-XX-AS-T- 55-0019

Status
For Approval

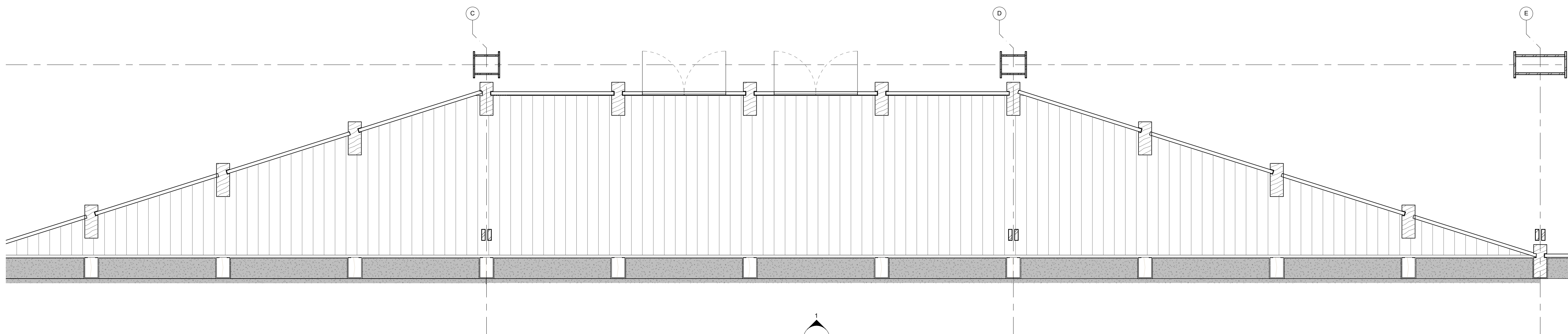
Date Drawn	Rev Date	Revision
03/11/22	16/03/22	P01

Size	Scale	Drawn By	Checked
A1	1:50	MO	JC

Heatherwick studio
 55 Argyle Street, London WC1H 8EE | T: +44 (0) 20 7833 8800
 studio@heatherwick.com | heatherwick.com



① North Elevation - Level 10 Terrace



② Plan - Level 10 Terrace

General Notes

THIS DRAWING IS FOR DESIGN INTENT PURPOSES ONLY. NOT FOR CONSTRUCTION.

HEATHERWICK STUDIO TAKE NO RESPONSIBILITY FOR ANY DIMENSIONS OBTAINED BY MEASURING OR SCALING FROM THIS DRAWING.

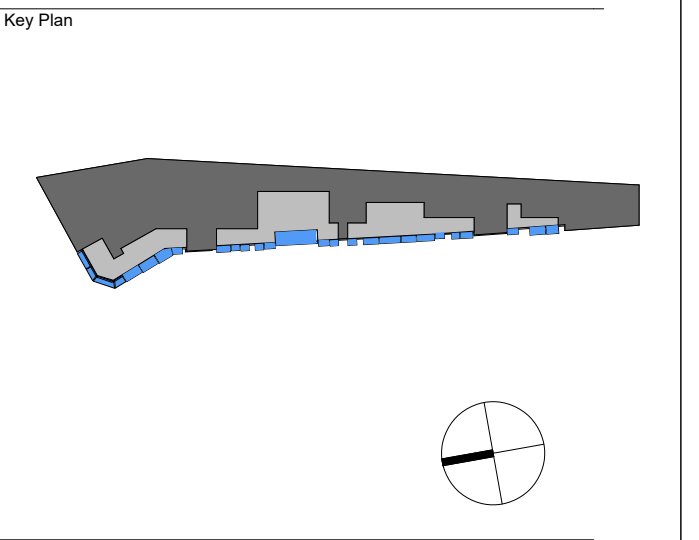
ALL DIMENSIONS AND LEVELS ARE TO BE CHECKED ON SITE BEFORE PROCEEDING.

THIS DRAWING MUST BE READ IN CONJUNCTION WITH RELEVANT CONSULTANT AND SPECIALIST DRAWINGS.

ALL STRUCTURE, MEP, LIGHTING, PLANTING CIVILS & DRAINAGE ARE INDICATIVE ONLY. THE SIZING OF STRUCTURAL AND SERVICES ELEMENTS MUST BE CHECKED AGAINST THE RELEVANT ENGINEERS DRAWINGS.

THIS DRAWING IS THE COPYRIGHT OF HEATHERWICK STUDIO AND IS NOT TO BE REPRODUCED IN ANY FORM WITHOUT PRIOR WRITTEN CONSENT.

GROUND FLOOR FACADE DRAWN BY HEATHERWICK STUDIO. ALL OTHER ELEMENTS OF THE DRAWINGS ARE PREPARED BY BDP AS ORIGINALLY SUBMITTED IN THE 2017 RESERVED MATTERS APPLICATION AND SUBSEQUENT NON-MATERIAL AMENDMENTS. HEATHERWICK STUDIO SHALL HAVE NO LIABILITY WHATSOEVER FOR ANY ERRORS, DEFECTS AND/OR DEFICIENCIES IN BDP DRAWINGS OR BASE BUILD INFORMATION.



- Sheet Notes**
- Key**
- 1 Steel Mullion
 - 2 Timber Mullion
 - 3 Black Painted Metal Structure
 - 4 Black Metal Cladding
 - 5 Pre-cast Concrete Spandrel
 - 6 Main Facade Glazing Panel
 - 7 Back Painted Dark Grey Glass Panel
 - 8 Steel Balustrade with Webnet Wire Mesh Panels
 - 9 Roof Facade Glazing Panel
 - 10 Timber Wall Cladding
 - 11 GRC rainscreen cladding skirting
 - 12 Weathering Steel Cladding
 - 13 Glass Balustrade
 - 14 Ground Facade Glazing Panel
 - 15 Dark Grey Metal Louvre Screen
 - 16 Glassfibre Reinforced Concrete Cladding
 - 17 Anodised Aluminium Architectural Louvres in Varied Bronze Tones
 - 18 Mass Timber Portal Frame
 - 19 Webnet Wire Mesh Panels
 - 20 Operable Timber Mullion
 - 21 Dark Grey Metal Panel
 - 22 Bronze Colour Metal Cladding Louvre
 - 23 South Anchor Glazed Sliding and Fixed Panels
 - 24 Intergrated Louvre in Spandrel Soffit
 - 25 Timber Hook Panels
- D1 Glass Sliding Door
 D2 Dark Grey Metal Louvre Door
 D3 Glass Hinged Door
 D4 Glazed Garden Maintenance Door
 D5 Glazed Garden Accessible Door
 D6 Dark Grey Back Painted Glass Door
 D7 Weathering Steel Door
 D8 Weathered Steel Structure & Vertical Bilfolding Doors
 D9 Bilfolding Doors
- Note: Please see Gillispies Drawing Ref: KXC-A-001-T-GIL-01-00011 for Garden Planting Design.

Sheet Notes

Note: For further information on Materials refer to Detailed Information Pack 1
 For further information on External Lighting refer to Detailed Information Pack 2

SCALE BAR 1:50

DATE	DESCRIPTION
P01 16/03/22	Issue for Planning

UK-LON-KGX1

GOOGLE INC
 16-21 Stables Street
 London, N1C 4AB
 TEL: +44 (0)203 6940200

Project Name

Documentation

Development Zone A
 Kings Cross Central
 York Way
 London

Sheet Name

Main Facade - North Elevation
 Terrace at Level 10

Project No.	Sheet No.
KXC	HS-XX-XX-AS-T- 55-0020

Status: For Approval

Date Drawn	Rev Date	Revision
11/03/22	16/03/22	P01

Size	Scale	Drawn By	Checked By
A1	1:50	JC	JC

Heatherwick studio

55 Argyle Street, London WC1H 8EE | T: +44 (0) 20 7833 8800
 studio@heatherwick.com | heatherwick.com