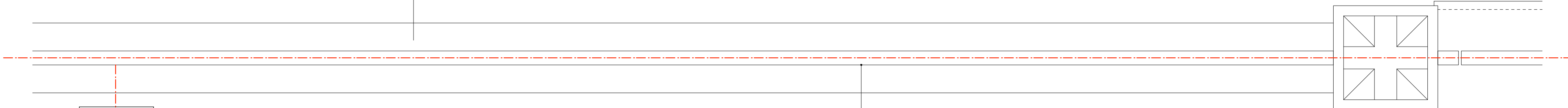


C

THE GROVE/ DRIVEWAY



REF CO/913 FOR FRONT BOUNDARY RAILING & GATES

FLOWER BED

NO. 8

NO. 7

FRONT GARDEN

NEW RAILING SPECIFICATION ALONG NO. 8 BOUNDARY
40X12MM CURVED FROGS BACK HANDRAIL
15X16MM SPINDLES AT APPROX 100MM CENTRES
40X40 END POSTS
DRILL & RESIN FIX POSTS INTO STONE COPINGS, WITH LEAD CAPS
PAINT FINISH

YORK STONE COPINGS ON RECLAIMED
LONDON STOCK BRICK WALL
RECLAIMED YORK STONE PAVING

FLOWER BED

STONE COPINGS/ BLOCKS SPECIFICATION
JOHNSONS WELFIELD, GOSLAND HILL
NEW CLASSIC BUFF YORKSTONE, DIAMOND SAWN
MIN. JOINT WIDTHS TO SUIT

RAILING SPECIFICATION TO FLOWER BED
NEW DECORATIVE PANELS TO MATCH ORIGINALS ON NO. 8 BOUNDARY;
JAMES HOYLES 42/PN143B ROSETTE & 43/PN143C INNER PANEL
40X12MM CURVED FROGS BACK HANDRAIL
DRILL & RESIN FIX POSTS INTO STONE COPINGS, WITH LEAD CAPS
PAINT FINISH

EXISTING RAILING SPECIFICATION ALONG NO. 8 BOUNDARY
RETAIN & REFURBISH EXISTING 2 NO. ORIGINAL RAILING PANELS ON BOUNDARY WITH NO. 8;
SUPPLEMENT WITH MATCHING SPECIAL INFIL PANEL,
40X12MM CURVED FROGS BACK HANDRAIL
DRILL & RESIN FIX POSTS INTO MASONRY, WITH LEAD CAPS
PAINT FINISH

PAINTED RENDER FINISH

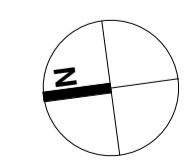
NORTH FRONT AREA

E

F

A

GROUND FLOOR PLAN



C

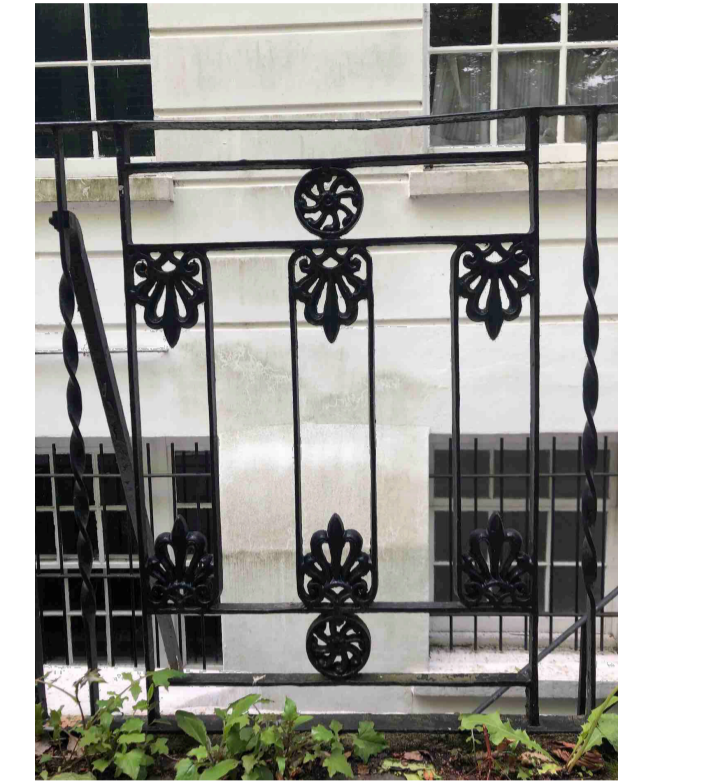
B

D

B

D

EXISTING RAILING PANEL DETAIL



JAMES HOYLES SPECIFICATION

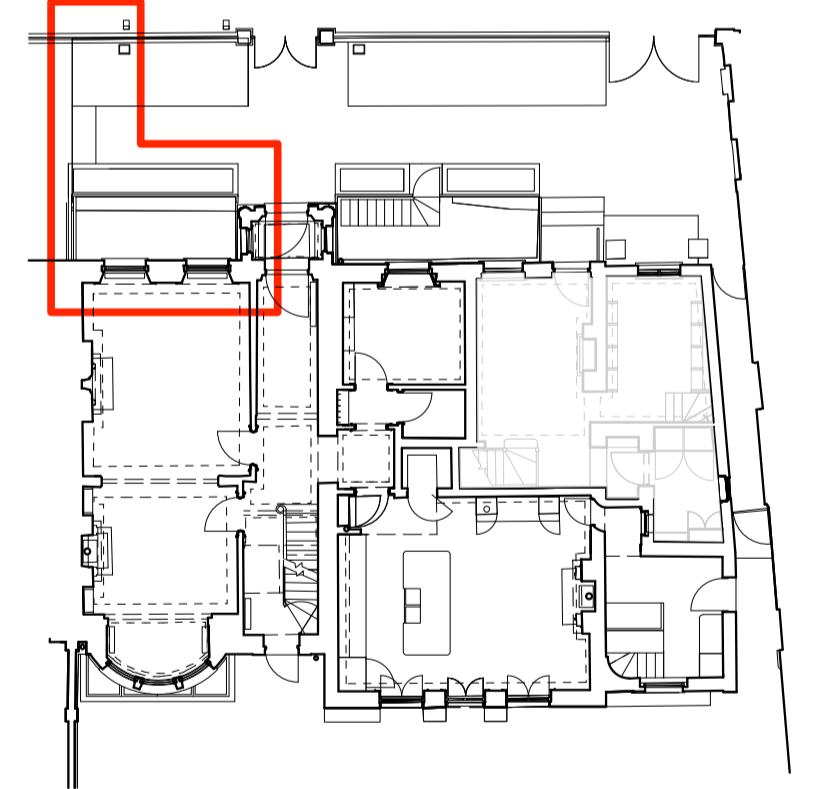
SUGGESTED DECORATIVE PANEL SPEC. SUBJECT TO
CONFIRMATION BY MAIN CONTRACTOR THAT IT MATCHES THE
EXISTING PANELS ON NO. 8 BOUNDARY



This panel can be made as a
complete item, or we can
make rosettes & the inner
panel separately

LOCATION PLAN

1:200



Lisa Shell architects

ESSE HOLLOWAY RD, EN HARTFORD ROAD, N1 9GT
T: 020 7490 7700 E: info@lisashellarchitects.co.uk
www.lisashellarchitects.co.uk

7 THE GROVE,
LONDON N6 6JU

FRONT GARDEN
NORTH FRONT AREA
RAILINGS
GRO7 / COP / 914
1:10 @ A1
DO NOT SCALE FROM THIS DRAWING
REFER ALL DISCREPANCIES TO ARCHITECT

REVISIONS/ ISSUE
27/09/24
ISSUE TO PLANNING
FOR DOC APPROVAL