

Proposed Ground Floor Plan
Scale 1:100 @ A3



Issued For	COMMENT
General Notes:	THIS DRAWING HAS BEEN PREPARED BY MICHAEL EALES ARCHITECTS AND THE DATA CONTAINED HEREIN MAY BE USED OR REPRODUCED ONLY WITH MICHAEL EALES ARCHITECTS' APPROVAL.

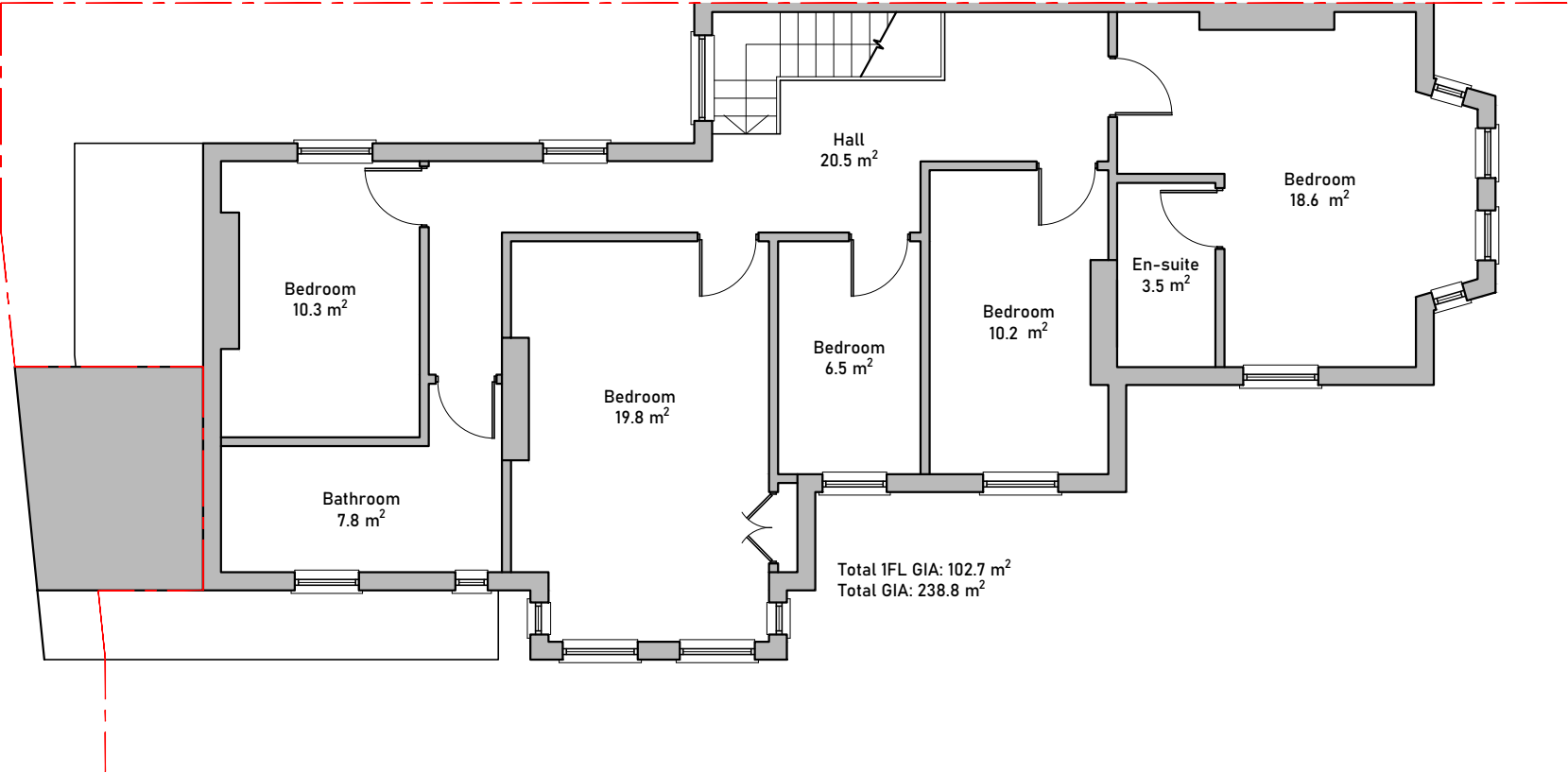
Rev.	Description	Date	Signed	Checked

--

--

A3 Scale 1:100	Date 24.09.24	Drawn by SS	Checked by ME
Drawing Title Proposed Plans			
Project 67 Minster Road West Hampstead, London NW2 3SJ			

<div>ME</div> <div>ARCHITECTS</div> <div>Quickbury Farm, Hatfield Heath Rd Sawbridgeworth, Hertfordshire CM21 9HY T - 07764 496 345 E - info@me-architects.co.uk</div>			Project no. 22/179	Drawing no. 2101	Revision 00
--	--	--	-----------------------	---------------------	----------------



Proposed First Floor Plan
Scale 1:100 @ A3



Issued For
COMMENT

General Notes:
THIS DRAWING HAS BEEN PREPARED BY MICHAEL EALES ARCHITECTS AND THE DATA CONTAINED HEREIN MAY BE USED OR REPRODUCED ONLY WITH MICHAEL EALES ARCHITECTS' APPROVAL.

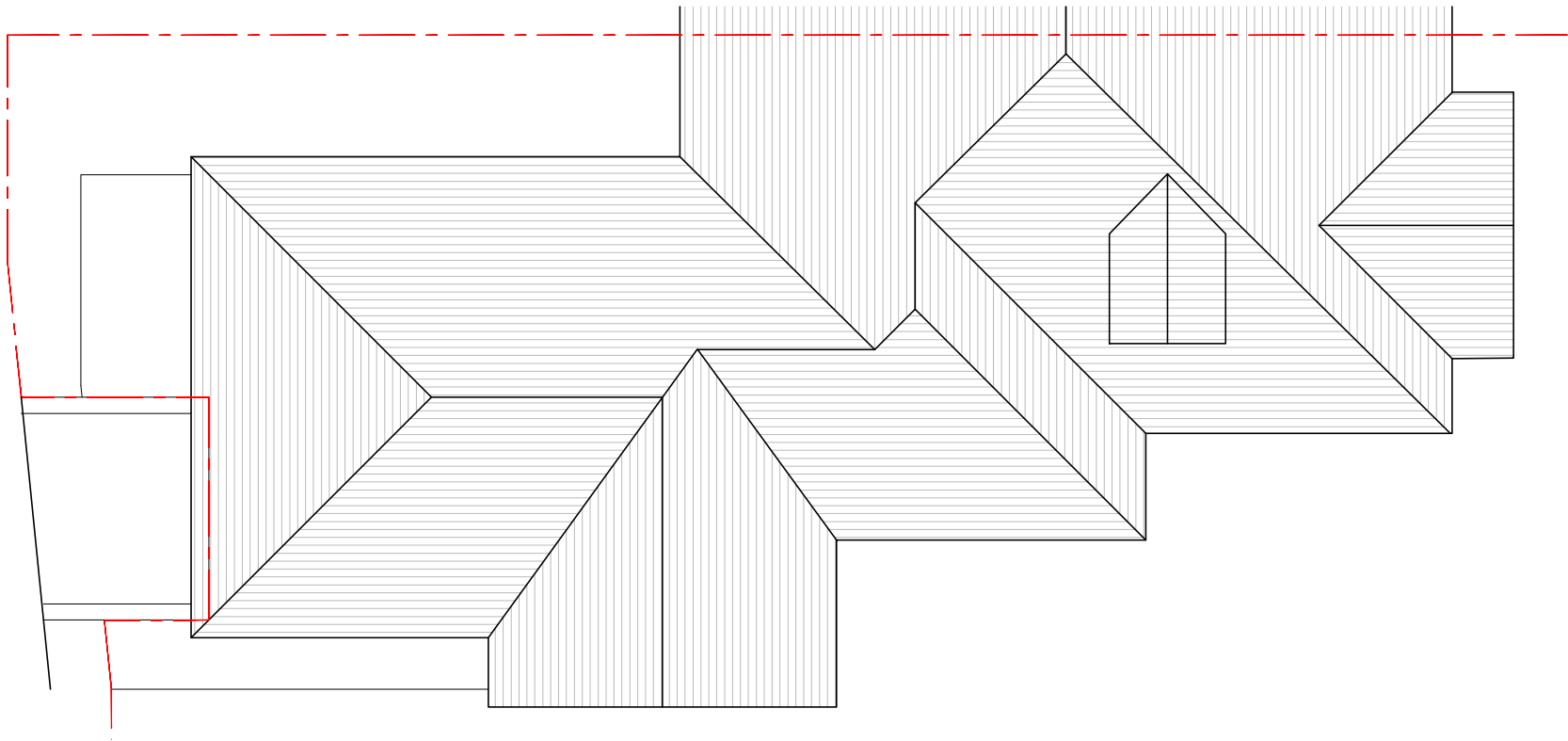
Rev.	Description	Date	Signed	Checked

--

--

A3 Scale 1:100	Date 24.09.24	Drawn by SS	Checked by ME
Drawing Title Proposed Plans			
Project 67 Minster Road West Hampstead, London NW2 3SJ			

<div><div>ME</div><div>ARCHITECTS</div></div> <div>Quickbury Farm, Hatfield Heath Rd Sawbridgeworth, Hertfordshire CM21 9HY T - 07764 496 345 E - info@me-architects.co.uk</div>			Project no. 22/179	Drawing no. 2103	Revision 00
--	--	--	------------------------------	----------------------------	-----------------------



Proposed Roof Plan
Scale 1:100 @ A3



Issued For
COMMENT

General Notes:
THIS DRAWING HAS BEEN PREPARED BY MICHAEL EALES ARCHITECTS AND THE DATA CONTAINED HEREIN MAY BE USED OR REPRODUCED ONLY WITH MICHAEL EALES ARCHITECTS' APPROVAL.

Rev.	Description	Date	Signed	Checked

--

--

A3 Scale 1:100	Date 24.09.24	Drawn by SS	Checked by ME
Drawing Title Proposed Plans			
Project 67 Minster Road West Hampstead, London NW2 3SJ			

<div><div>ME</div><div>ARCHITECTS</div></div> <div>Quickbury Farm, Hatfield Heath Rd Sawbridgeworth, Hertfordshire CM21 9HY T - 07764 496 345 E - info@me-architects.co.uk</div>			Project no. 22/179	Drawing no. 2104	Revision 00
--	--	--	------------------------------	----------------------------	-----------------------