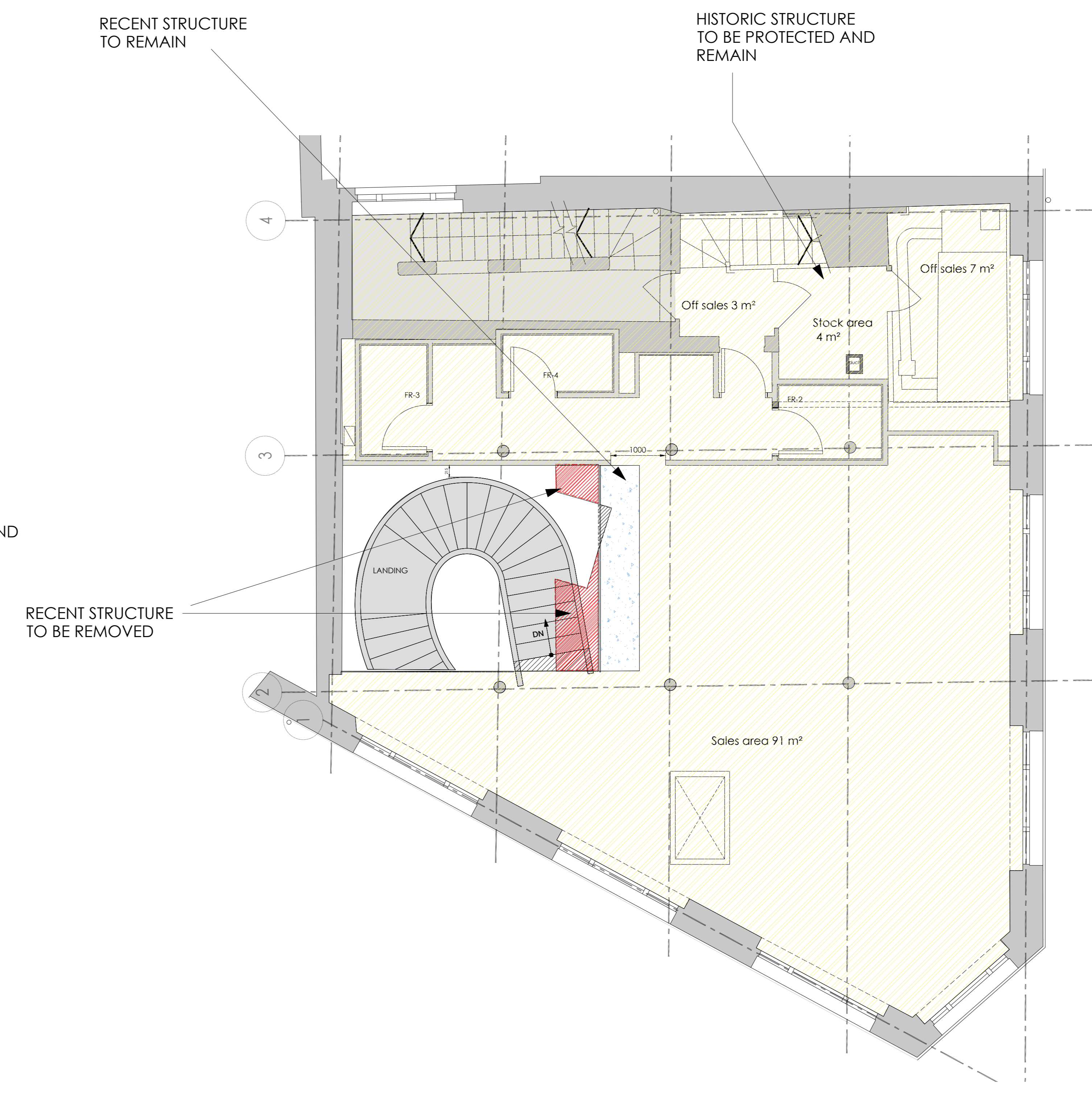
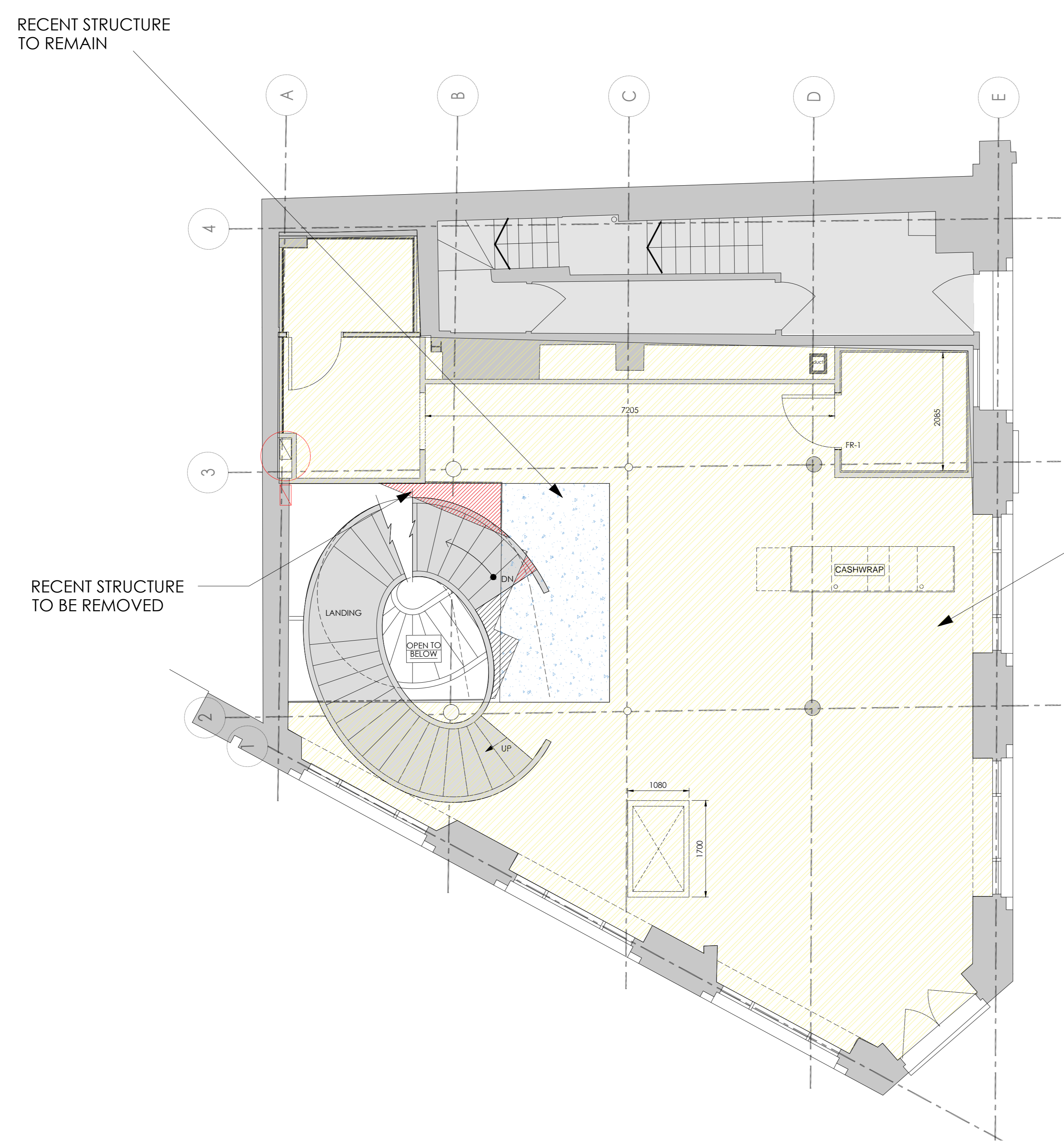


Written dimensions on these drawings shall take precedence over scaled dimensions. Contractors shall verify and be responsible for all dimensions and conditions on the project and this office must be notified of any variations from the dimensions and conditions shown by these drawings prior to commencement of any work. All contractors are deemed to have made themselves aware of site conditions prior to entering into any contract. Shopfiting details must be submitted to this office for approval before proceeding with fabrication. This drawing is the property of rpa. Copyright is reserved by them and the drawing is issued on condition that it is not copied, reproduced, retained or disclosed to any unauthorised person, either wholly or in part without the consent in writing of rpa.

NOTE:
 This drawing was created using details from:
 rpa survey 08-02-2024
 LMA dwg -
 20240329-Alo-Covent
 Garden-DD Set - LMA



NEW STORE 2024 - FOR CONSTRUCTION

rev	date	description	drawn	chk
1	17.09.24	INFORMATION ISSUE Initial issue of drawing.	TC	-



COVENT GARDEN
 25 Neal Street
 London WC2H 9PR
 United Kingdom

drawing title
CONSTRUCTION PLANS
 Demolition of structure
 Ground & First floors

drawn by	date	checked
TC	April 24'	TC
job no.	drawing no.	revision
2008122	A-700	-

scale
 1:25 @ A0