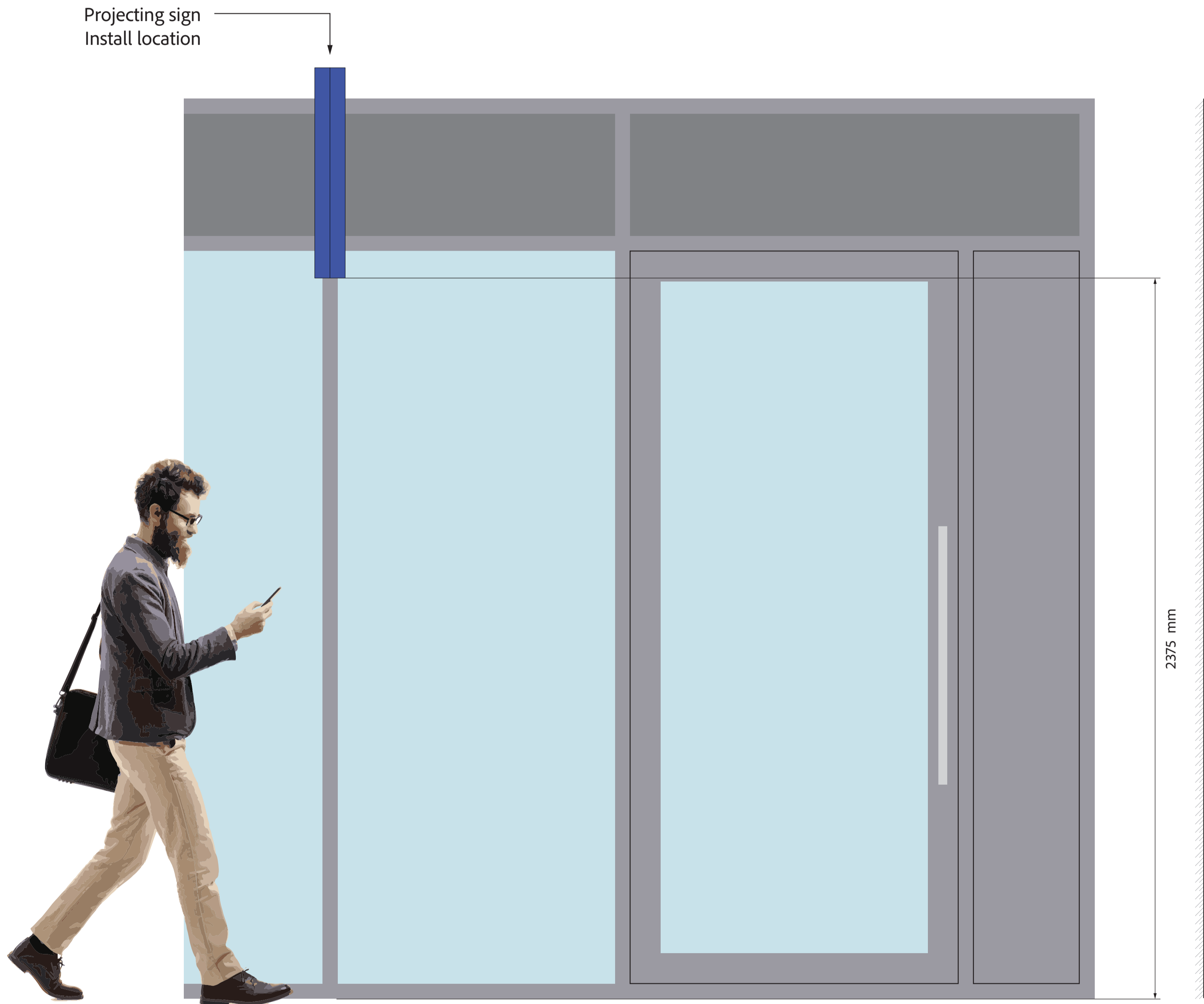
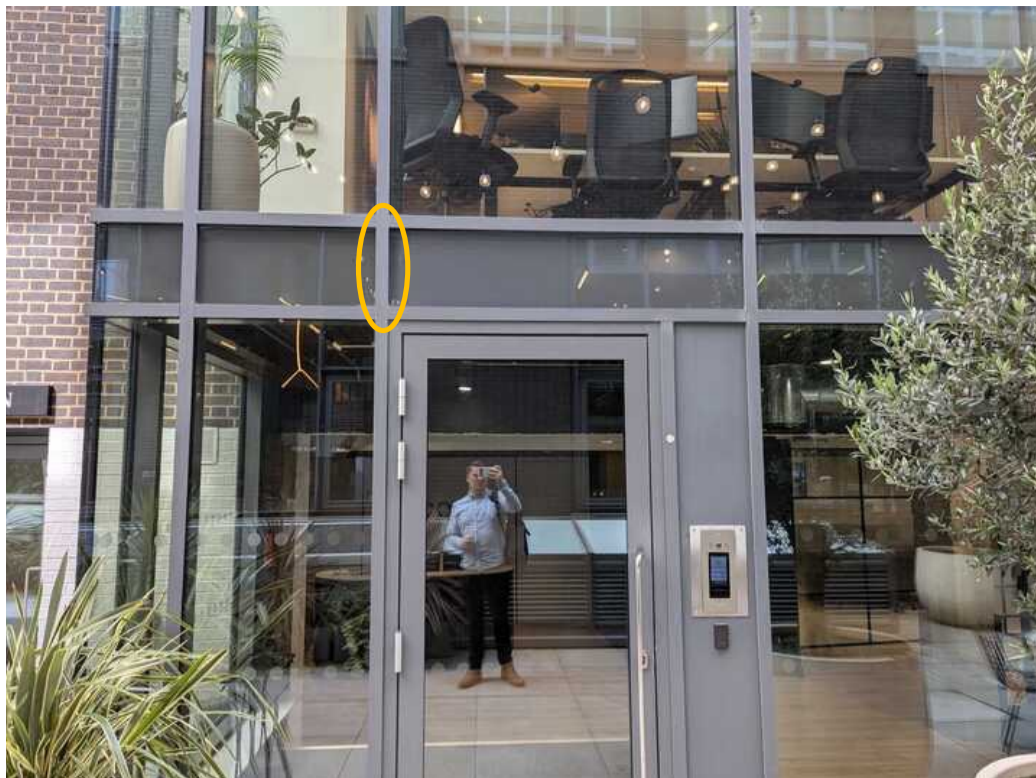


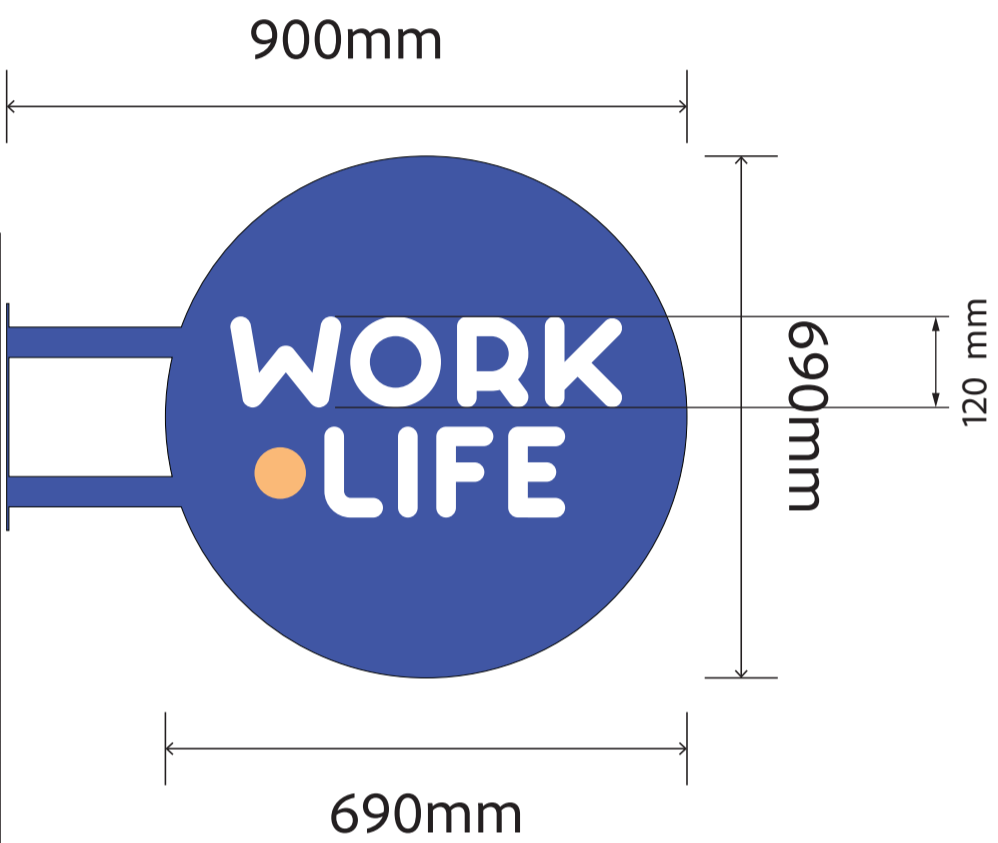
Projecting Sign

Double sided built-up shaped 3mm aluminium projecting sign 690mm high x 100mm / deep overall (50mm back to back). Coated to RAL colour (TBC) & vinyl detail applied to both sides.

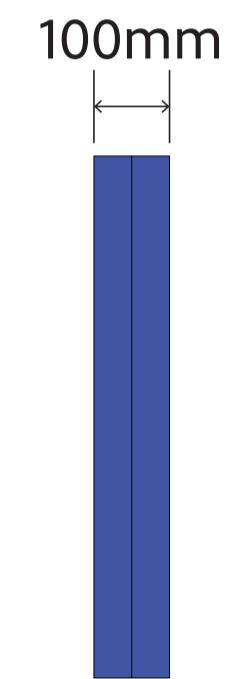
Internal folded/rolled 2mm aluminium carcass with (2no) projecting arms to give 100mm (TBC) stand-off & wall plate to suit



Front angle



Side angle



Job Number:  
5356

Client Name:  
Worklife (Farringdon)

Item Name:  
Projecting Sign

Install Address:  
Building 6,  
Johnson Gardens Courtyard,  
7 St Cross St,  
London  
EC1N 8UB

Substrate:  
Aluminium Window Frame

Product type:  
Double sided built-up shaped 3mm  
aluminium projecting sign with cut vinyl  
applied to both sides

Artworker:  
HT

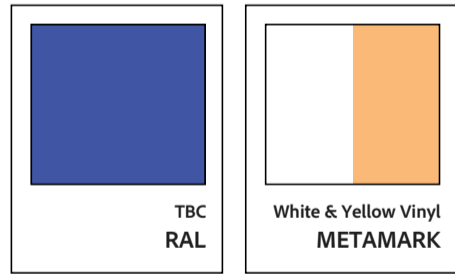
Date:  
07/08/2024

Quantity:  
x1

Scale of proof:  
100%

Revision:  
03

Material / colour reference:



Fonts:  
Outlines

Job Notes:  
Colours to be confirmed

•All Dimensions are in Millimeters.  
•Man at 1850mm H (6FT)