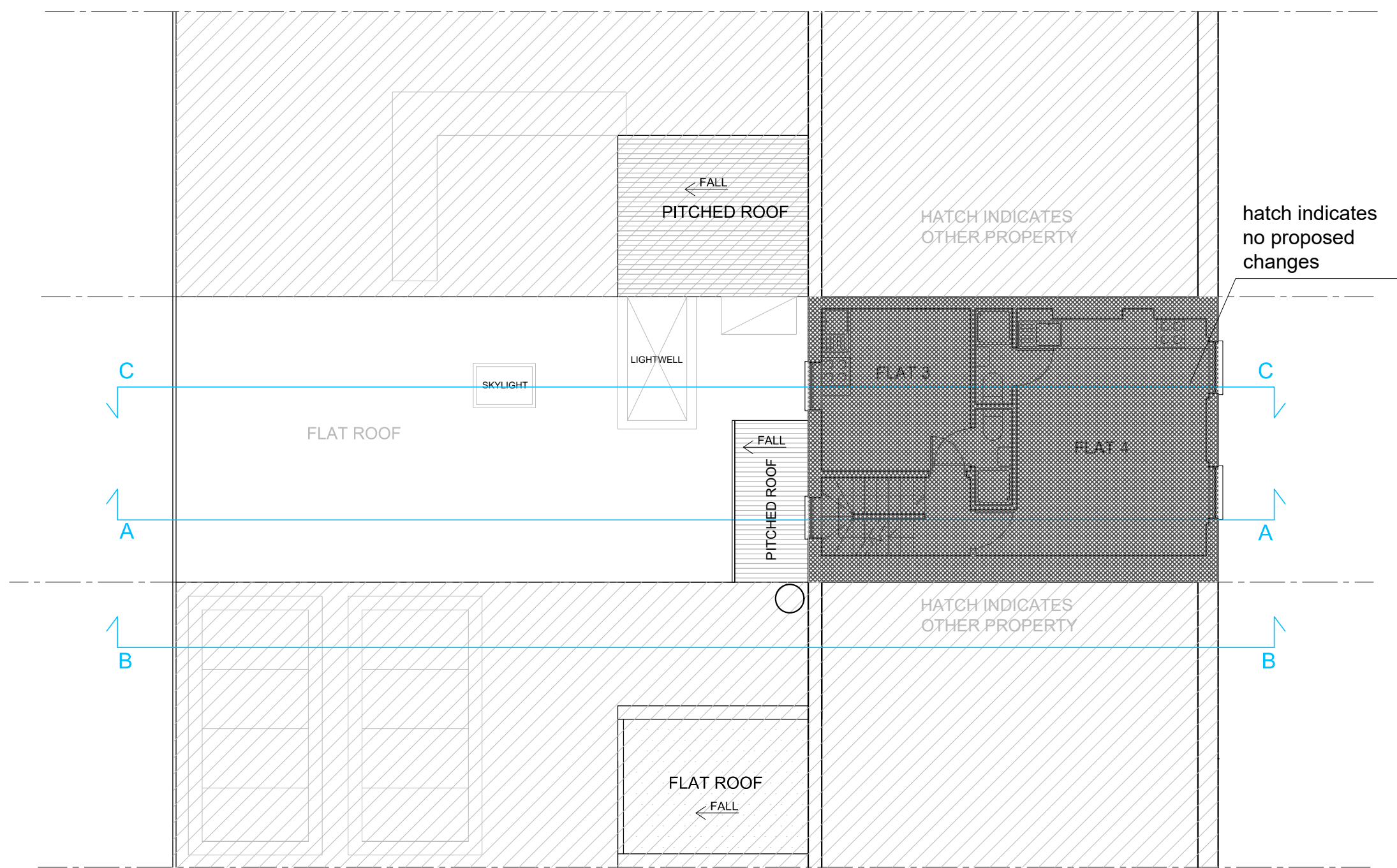
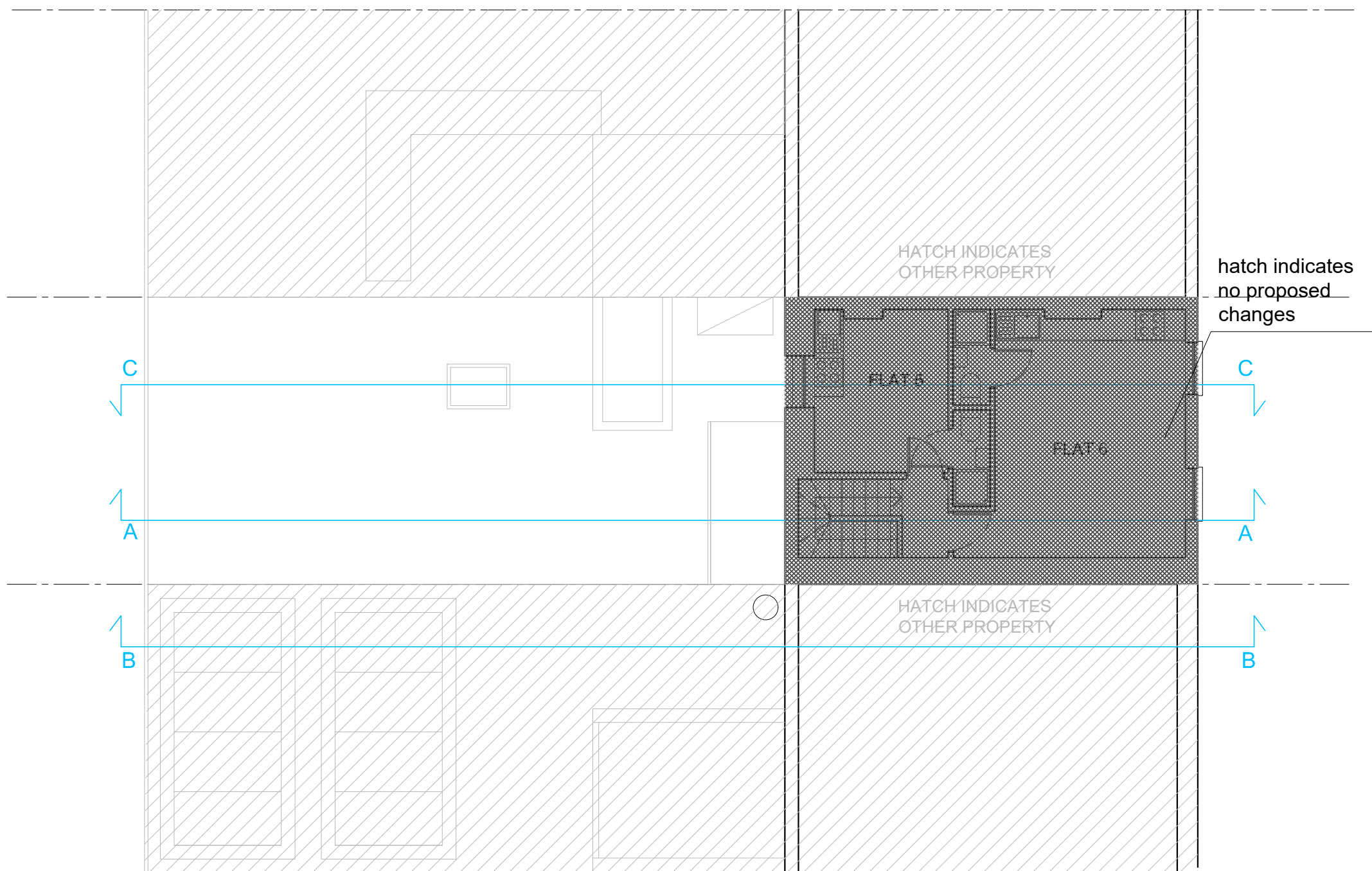


EXISTING SECOND FLOOR (NO PROPOSED CHANGES)



EXISTING THIRD FLOOR (NO PROPOSED CHANGES)



PLEASE NOTE : NO PROPOSED CHANGES TO OTHER FLOORS  
CHANGES TO THE FIRST FLOOR ONLY

Do not scale this drawing. All drawings are to be read in conjunction with a Measured Survey. Any discrepancies between these documents shall be brought to the attention of the architect. Drawings as instruments of service remain the property of architect and are protected under common law copyright provisions.	Rev	Date	Comments	Orientation	<div>SCALE BAR 1:100</div> <div><div><div>0</div><div></div><div></div><div></div><div></div><div></div><div>5 m</div></div></div>	<div>Romeo Architects</div> <div>Unit 408, Screenworks,</div> <div>22 Highbury Grove, London, N5 2ER</div> <div>Phone: +44 7599 863 122</div> <div>www.romeoarchitects.com</div> <div>studio@romeoarchitects.com</div>	Project title: First floor rear extension of a residential building lawfully used as 11 flats at 263 Eversholt Street, London NW11BA	
	00	SEPT 2024		<div><div><div></div><div></div></div><div><div></div><div></div></div></div>			Drawing title: Existing second and third floor layout (no changes)	
	Client: SP		Scale: 1:100 @A2					
	Dwg no: PA_039_06_04		Date: 09/2023					