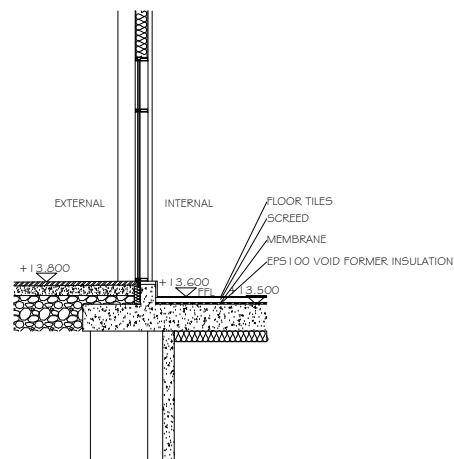
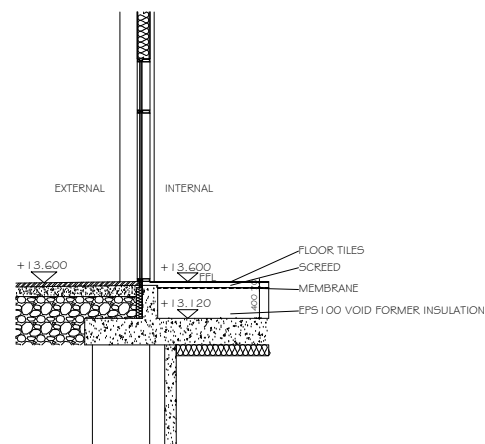


PROPOSED GROUND FLOOR PLAN  
SCALE 1:50@A1



SECTION THROUGH SHOPFRONT  
RETAIL UNIT O2  
SCALE 1:50@A1



SECTION THROUGH SHOPFRONT  
RETAIL UNIT O3  
SCALE 1:50@A1

**ELECTRICAL LEGEND:**

1. 4no. LED DROP PENDANT
2. 5no. ADJ. LED TRACK SPOT
3. 1no. EMERGENCY EXIT BLADE TRACK MOUNT
4. 1no. LED DISC PENDANT 120mm
5. 8no. LED DISC PENDANT 200mm
6. 1no. LED DISC PENDANT 300mm
7. 2no. EMERGENCY DOWNLIGHT TRACK MOUNT
8. 2no. POSER BAR WINDOW PENDANT
9. 15no. ADJ LED TRACK WASH
10. 10no. LINEAR BISSYMMETRIC LED 225
11. 5no. LINEAR BISSYMMETRIC LED 225 EMERGENCY
12. 1no. LINEAR BISSYMMETRIC LED 150 EMERGENCY
13. 1no. LINEAR BISSYMMETRIC LED 150

- CEILING MOUNTED BATTEN LIGHT
- WALL MOUNTED BATTEN LIGHT
- DAIKIN ROUND FLOW CASSETTE, FxFQ100B HEATING/COOLING, GRILLE TO BE SPRAYED BLACK.
- SINGLE SWITCHED SOCKET OUTLET
- DOUBLE SWITCHED SOCKET OUTLET
- SINGLE 13A SWITCHED FUSED CONNECTION UNIT FLUSH MOUNTED
- BT TELEPHONE SOCKET
- SINGLE WAY LIGHT SWITCH
- TWO WAY LIGHT SWITCH
- THREE WAY LIGHT SWITCH
- EXTERNAL FASCIA SIGN LIGHT
- OVEN 3P SUPPLY
- BACK UP CHILLER
- LIGHT FEED FUSE BOX (IT MAY BE ADJUSTED TO SUIT POSITION OF LIGHTING)
- EXTRACT FAN
- DATA POINT
- DOUBLE DATA POINT
- DOUBLE DATA POINT
- CCTV
- FUSE BOX 12 WAY 3PHASE

**FIRE LEGEND:**

- SMOKE DETECTOR TO UNDERSIDE OF CEILING OR SLAB, TO COMPLY WITH BS:5839 PART 1, CLAUSE 12.2.2.
- SMOKE DETECTOR LOCATED IN VOID ABOVE SUSPENDED CEILING, TO COMPLY WITH BS:5839 PART 1, CLAUSE 12.2.2.
- MAINS CONNECTED HEAT DETECTOR WITH BATTERY BACKUP
- EMERGENCY ESCAPE LIGHTING WITH BATTERY BACKUP
- FIRE ALARM CALL POINT BREAK GLASS FITTING
- FIRE ALARM BELL / SOUNDER
- FIRE ALARM BELL / SOUNDER WITH FLASHING BEACON
- FIRE ALARM CONTROL PANEL TO INTERFACE WITH LANDLORDS SYSTEM
- INTERNALLY ILLUMINATED SUSPENDED FIRE EXIT SIGN WITH RUNNING MAN LOGO AND ARROW TO INDICATE DIRECTION, TO COMPLY WITH BS:5499
- FIRE ALARM CONTROL PANEL SUPPLY
- 9 LITRE WATER FIRE EXTINGUISHER
- 2kg CO2 FIRE EXTINGUISHER
- FIRE ACTION NOTICE

**NOTES:**

- EMERGENCY LIGHTING TO BE DESIGNED, INSTALLED AND COMMISSIONED IN ACCORDANCE WITH THE REQUIREMENTS OF BS:266-1 STANDARD.
- EMERGENCY EXIT SIGNAGE LAYOUT TO BE DESIGNED, INSTALLED AND COMMISSIONED IN ACCORDANCE WITH THE REQUIREMENTS OF BS:5499 STANDARD.

**DOOR SCHEDULE:**

- VISION PANELS TO BE PROVIDED TO DOORS WHERE INDICATED. VISION PANELS TO BE 300mm CIRCULAR, CENTERED AND 1500mm ABOVE FFL. VISION PANELS TO BE IN ACCORDANCE WITH PART M OF BUILDING REGULATIONS. DOOR OPENING FORCES AND EFFECTIVE CLEAR WIDTHS TO BE IN ACCORDANCE WITH PART M OF BUILDING REGULATIONS. ALL DOOR THRESHOLD TO BE STAINLESS STEEL. THRESHOLD STRIPS WHERE NECESSARY TO MAKE UP DIFFERENCE IN FLOOR FINISH LEVELS. ALL DOORS TO THE SALES AREA TO BE PAINTED IN BLACK SATIN FINISH. DOOR FRAMES TO BE PAINTED WHITE.
- D.1: EXISTING
  - D.2: EXTERNAL SLIDING DOOR, FRAMING 45x100mm POWDER COATED ALUMINUM, COLOUR TO MATCH EXISTING SHOPFRONT. DOOR FITTED WITH FIVE LEVER SECURITY LOCKS APPROVED BY INSURANCE COMPANIES. GLAZING TO BE 8.28mm LAMINATED SAFETY GLASS BEDDED SECURELY IN ALUMINUM SECTIONS, TO COMPLY WITH PARTS L2B, M, N1 AND N2 OF THE BUILDING REGULATIONS. ELECTRONIC LOCK SHALL RELEASE ON POWER FAILURE AND FIRE ALARM EVACUATION AND ON OPERATION OF A LOCAL GREEN BREAK GLASS OVERRIDE.
  - D.3: 7G2x2040mm FLUSH SOLID CORE DOOR, HALF HOUR FIRE RESISTING WITH INTUMESCENT STRIP & SMOKE SEAL WITH NEW FRAME. DOOR TO HAVE SAA LOCK PLATES x2. SAA PUSH PLATES x2. DOOR TO INCLUDE VISION PANEL. IRONMONGERY - 1 PAIR STEEL BUTT HINGES, BRASS PUSH PLATES, INDICATOR BOLT, COAT HOOK AND DOOR STOP. TO BE PAINTED BLACK.
  - D.4: 7G2x2040mm FLUSH SOLID CORE DOOR, HALF HOUR FIRE RESISTING WITH INTUMESCENT STRIP & SMOKE SEAL WITH NEW FRAME. DOOR TO HAVE SAA LOCK PLATES x2. SAA PUSH PLATES x2. DOOR TO INCLUDE VISION PANEL. IRONMONGERY - 1 PAIR STEEL BUTT HINGES, BRASS PUSH PLATES, INDICATOR BOLT, COAT HOOK AND DOOR STOP. TO BE PAINTED BLACK.
  - D.5: 7G2x2040mm FLUSH SOLID CORE DOOR, HALF HOUR FIRE RESISTING WITH INTUMESCENT STRIP & SMOKE SEAL WITH NEW FRAME. DOOR TO HAVE SAA LOCK PLATES x2. SAA PUSH PLATES x2. DOOR TO INCLUDE VISION PANEL. IRONMONGERY - 1 PAIR STEEL BUTT HINGES, BRASS PUSH PLATES, INDICATOR BOLT, COAT HOOK AND DOOR STOP. TO BE PAINTED BLACK.
  - D.6: 926x2040mm FLUSH SOLID CORE DOOR, HALF HOUR FIRE RESISTING WITH INTUMESCENT STRIP & SMOKE SEAL WITH NEW FRAME. EACH DOOR TO HAVE SAA LOCK PLATES x2. SAA PUSH PLATES x2. DOOR TO INCLUDE VISION PANEL. TO BE PAINTED BLACK. IRONMONGERY: SATIN STAINLESS STEEL FINISH HANDLE AND INDICATOR, MORTICE DOOR LOCK- CONCEALED BOLT FITTED THROUGH INDICATOR FIXINGS. 400mm DDA DOOR FULL HANDLE: DDA COMPLIANT; SATIN STAINLESS STEEL FINISH; SATIN STAINLESS STEEL FINISH DISABLED TOILET DOOR SIGN (75mm DIAMETER).
  - D.7: 926x2040mm FLUSH SOLID CORE DOOR, HALF HOUR FIRE RESISTING WITH INTUMESCENT STRIP & SMOKE SEAL WITH NEW FRAME. DOOR TO HAVE SAA LOCK PLATES x2. SAA PUSH PLATES x2. DOOR TO INCLUDE VISION PANEL. IRONMONGERY - 1 PAIR STEEL BUTT HINGES, BRASS PUSH PLATES, INDICATOR BOLT, COAT HOOK AND DOOR STOP. TO BE PAINTED BLACK.
  - D.8: 826x2040mm FLUSH SOLID CORE DOOR, HALF HOUR FIRE RESISTING WITH INTUMESCENT STRIP & SMOKE SEAL WITH NEW FRAME. DOOR TO HAVE SAA LOCK PLATES x2. SAA PUSH PLATES x2. DOOR TO INCLUDE VISION PANEL. IRONMONGERY - 1 PAIR STEEL BUTT HINGES, BRASS PUSH PLATES, INDICATOR BOLT, COAT HOOK AND DOOR STOP. TO BE PAINTED BLACK.
  - D.9: FREEZER ROOM DOOR.

**DECORATION SCHEDULE:**

- ALL WALL FINISHES TO BE DEC TO CLASS 1 AND PAINTED BLACK UNLESS NOTED OTHERWISE. ALL IRONMONGERY STAINLESS STEEL FINISH UNLESS NOTED OTHERWISE. ANY FIRE RATED DOORS TO HAVE SMOKE SEALS/INTUMESCENT STRIPS AND SHOULD BE RATED 30' OR 60' AS APPROPRIATE. GREY GRADUS SKIRTING ON THE WALL CLADDING PILLARS.

**WALL LEGEND:**

- 122mm FIRE RESISTANT GYPWALL CLASSIC STUD/WALL, GYPFRAME 70 S 50'C STUD AT 600mm CENTRES, ONE LAYER OF 12.5mm GYPROC WALLBOARD EACH SIDE OF 97mm. TO ACHIEVE 30' FIRE PROTECTION. BS EN 1364-1, FIRE RESISTANCE TEST FOR NON-LOADBEARING ELEMENTS - WALLS
- 73mm WALL: 48mm GYPWALL CLASSIC METAL STUD PARTITION. 1x12.5mm BOARDING TO EACH SIDE.
- COLD/FREEZER ROOM PANELS.

**FIT-OUT NOTES:**

- EXISTING CEILING TO BE PAINTED BLACK. NEW SUSPENDED CEILING WHERE INDICATED.
- NEW LIGHTING TO BE PROVIDED TO SALES AREA AND BACK OF THE HOUSE - PLEASE REFER TO DRAWINGS NO. WD100 AND WD200.
- NEW FIRE SYSTEM AND ELECTRICAL SYSTEM TO BE PROVIDED - PLEASE REFER TO DRAWINGS NO. WD100 AND WD200.
- NEW FLOORING TO BE PROVIDED TO SALES AREA AND BACK OF THE HOUSE - PLEASE REFER TO DRAWING NO. WD300.
- NEW 3NO. AIR CONDITIONING UNITS TO BE INSTALLED - PLEASE REFER TO DRAWING NO. WD200 AND TO SPECIALISTS' DRAWINGS.
- NEW SHELVING SYSTEM TO BE INSTALLED - PLEASE REFER TO DRAWING NO. WD400.
- HIGH LEVEL SIGNAGE: SEE ELEVATION DRAWING NO. W500 AND SPECIALISTS' DRAWINGS.
- FLOOR SCREEDING TO BE PROVIDED - PLEASE REFER TO DRAWING NO. WD300.

Rev	Date	Description
DOLGAL GROUP 134 ST GEORGES ROAD COVENTRY CV1 2SD		MORIA COLLE 83 EXETER PLACE NORTHAMPTON NN1 4DG Tel: 07818 456 077 e.mc@moriascole.com
Project: UNITS 2 # 3 10 # 12 PHOENIX PLACE POSTMARK, WC1X 0BU		
Title: FIT-OUT DRAWING		
Drawing No.: WD100		
Date: 07.04.24	Drawn by: MC	
Scale: 1:50@A1		

