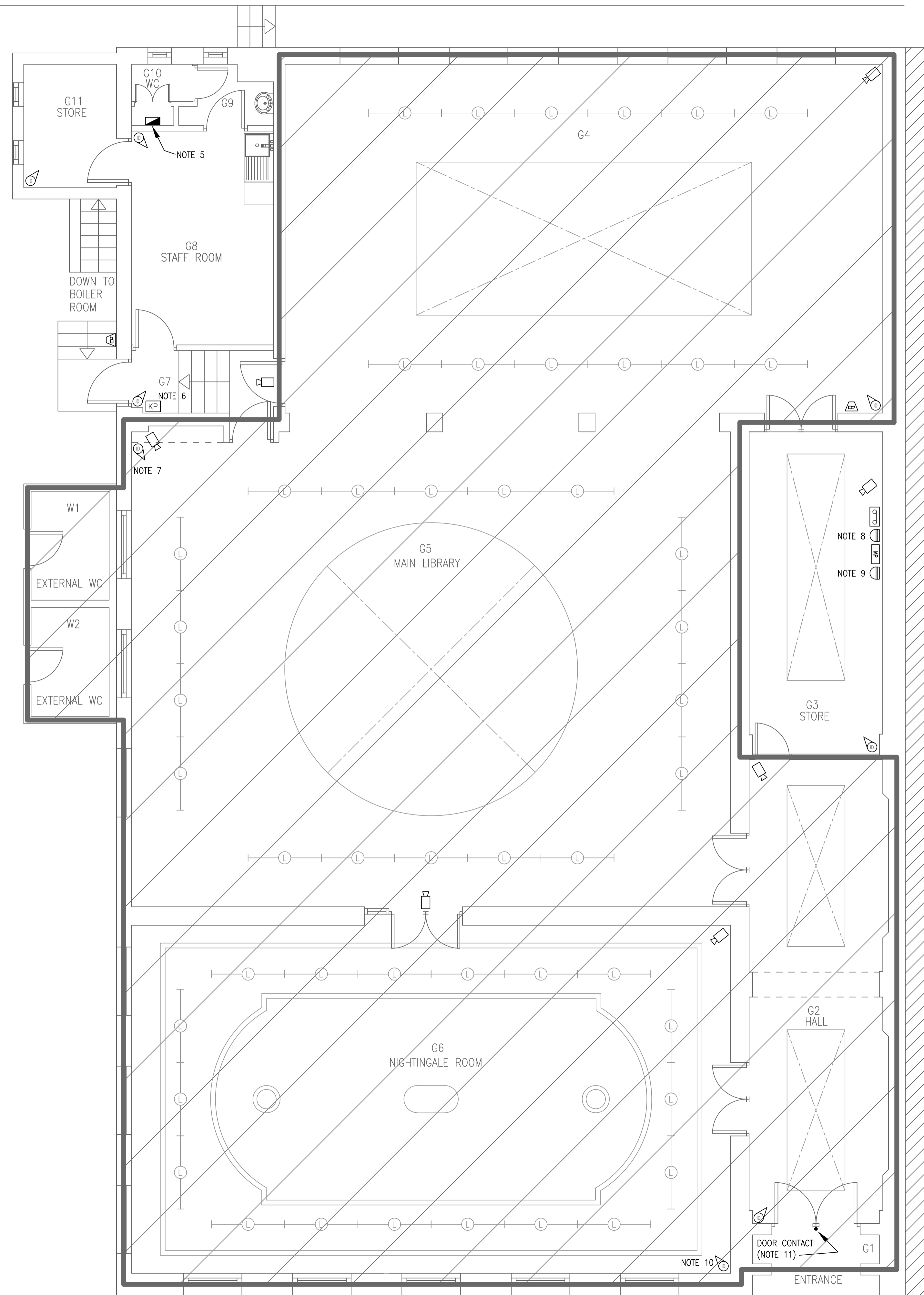
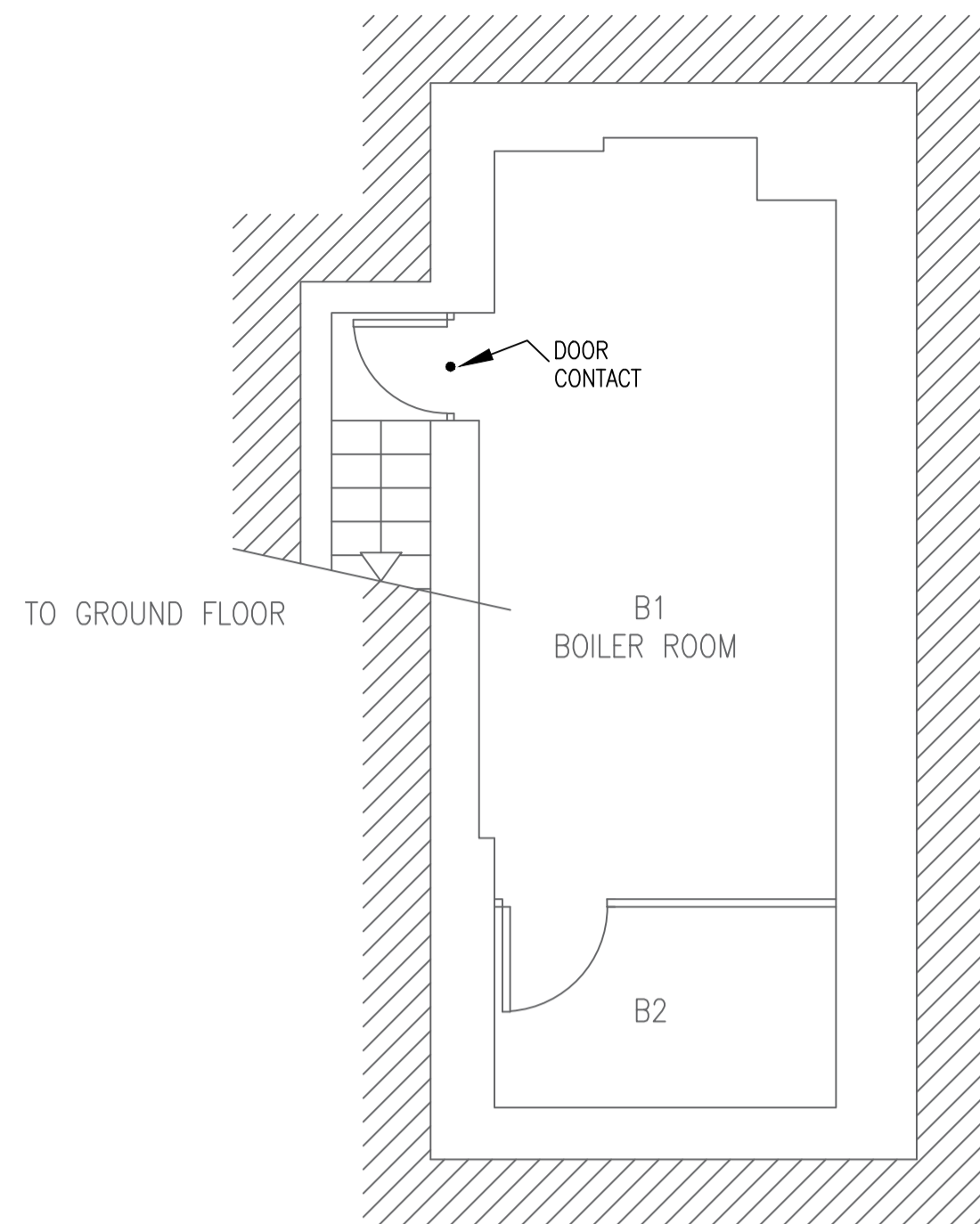


BASEMENT



LEGEND

- CLOSED CIRCUIT TELEVISION CAMERA - TO BE RETAINED
- RECORDING DEVICE - TO BE RETAINED
- INTRUDER ALARM CONTROL PANEL - NEW
- INTRUDER ALARM KEYPAD (WIRELESS) - NEW
- INTRUDER ALARM SIREN - NEW
- INTRUDER DETECTOR (DIRECTIONAL) - NEW
- DOOR OPEN ALARM CONTACT - NEW
- SUSPENDED MODULAR LINEAR LIGHTING SYSTEM (EXISTING RETAINED)
- ROOFLIGHT
- VISITOR ACCESSIBLE

notes

1. THIS DRAWING IS TO BE READ IN CONJUNCTION WITH THE CONTRACT SPECIFICATION AND ALL OTHER CONTRACT DRAWINGS.
2. ALL SERVICES ROUTES ARE APPROXIMATE, THE CONTRACTOR SHALL BE RESPONSIBLE FOR DETERMINING THE EXACT ROUTES AND POSITIONS OF ALL INSTALLED SERVICES AND EQUIPMENT.
3. THE EXACT POSITION OF ALL SERVICES AND EQUIPMENT SHALL BE AGREED ON SITE WITH THE ENGINEER.
4. THE CONTRACTOR SHALL BE RESPONSIBLE FOR FULLY CO-ORDINATING ALL SERVICES INSTALLED BY HIM WITH THE BUILDING FABRIC AND ANY SERVICES TO BE INSTALLED BY OTHER.
5. LOCATION OF DNO SERVICE HEAD & METER ALONG WITH THE LIBRARIES DISTRIBUTION BOARD.
6. KEY PAD TO BE MOUNTED IN-LINE WITH NEW FIRE ALARM BREAK GLASS UNIT.
7. DETECTOR TO BE LOCATED IN THE CORNER AT THE TOP OF THE EXISTING BOXING-IN.
8. AN EXISTING NON-FUSED CONNECTION UNIT IS IN-SITU TO SUPPLY THE CCTV SYSTEM. HOWEVER, IT IS UNKNOWN WHAT TYPE OF CABLE HAS BEEN UTILISED AND HOW IT IS SUPPLIED FROM THE LIBRARIES DISTRIBUTION BOARD.

THE CONTRACTOR SHALL INVESTIGATE AND IF FOUND TO BE UNSUITABLE A NEW CABLE IS TO BE INSTALLED AND THE CIRCUIT IS TO BE DEDICATED TO THE CCTV SYSTEM ONLY.

THE CABLE AND INSTALLATION METHOD SHOULD 'MARRY' WITH THE EXISTING ARRANGEMENT WITH THE DEDICATED CIRCUIT DERIVED FROM THE LIBRARIES DISTRIBUTION BOARD.

notes (cont.)

9. THE CONTRACTOR SHALL INSTALL A NON-FUSED CONNECTION UNIT TO SUPPLY THE INTRUDER ALARM SYSTEM.

THE NEW CABLE IS TO BE INSTALLED AND THE CIRCUIT IS TO BE DEDICATED TO THE INTRUDER ALARM SYSTEM ONLY.

THE NEW CABLE AND INSTALLATION METHOD SHOULD 'MARRY' WITH THE EXISTING ARRANGEMENT WITH THE DEDICATED CIRCUIT DERIVED FROM THE LIBRARIES DISTRIBUTION BOARD.
10. DETECTOR TO BE LOCATED IN LINE WITH THE WINDOW MULLIONS.
11. DOOR CONTACT TO BE A WIRELESS TYPE AND BROWN COLOUR SO AS TO MATCH THE DOOR.
12. THE EXISTING CCTV SYSTEM IS TO BE RETAINED WITH NO NEW WORKS TO BE UNDERTAKEN.
13. WHERE PRACTICAL AND IT DOES NOT IMPAIR ITS OPERATION, ALL NEW & EXISTING DEVICES/EQUIPMENT (INCLUDING THE LIGHTINGS 'KLICK' CEILING ROSES) ARE TO BE PAINTED (EVENLY & WITHOUT RUNS) SO AS TO MATCH THE SURROUNDING WALL/CEILING SURFACE TO WHICH IT IS FIXED.
14. ALL REDUNDANT CABLING IS TO BE REMOVED AND ANY SURFACES MADE GOOD.

Notes
Do not scale. All dimensions to be checked on site.
Errors to be reported to supervising officer.

Rev	Drawn	Date
C		17.07.23
B		15.12.22
A		09.11.22



P.G. Wilkinson BSc MSc MRICS
City Surveyor

CITY SURVEYOR'S DEPARTMENT
Corporate Property Group:
Plans & Research Section

Project :
KEATS COMM. LIBRARY
10 KEATS GROVE
LONDON NW3 2RR

Drawing :
BASEMENT & GRD FLR
PROPOSED INT. ALARM &
CCTV SYSTEMS LAYOUTS

Scale at A1 : 1:50 Drawn by : S.M.C.

Des : S.M.C. App :

Date : JUNE 22 Pro code UPRN

Drawing No: COL/KL/68/11

Revision	C				
----------	---	--	--	--	--

GROUND FLOOR