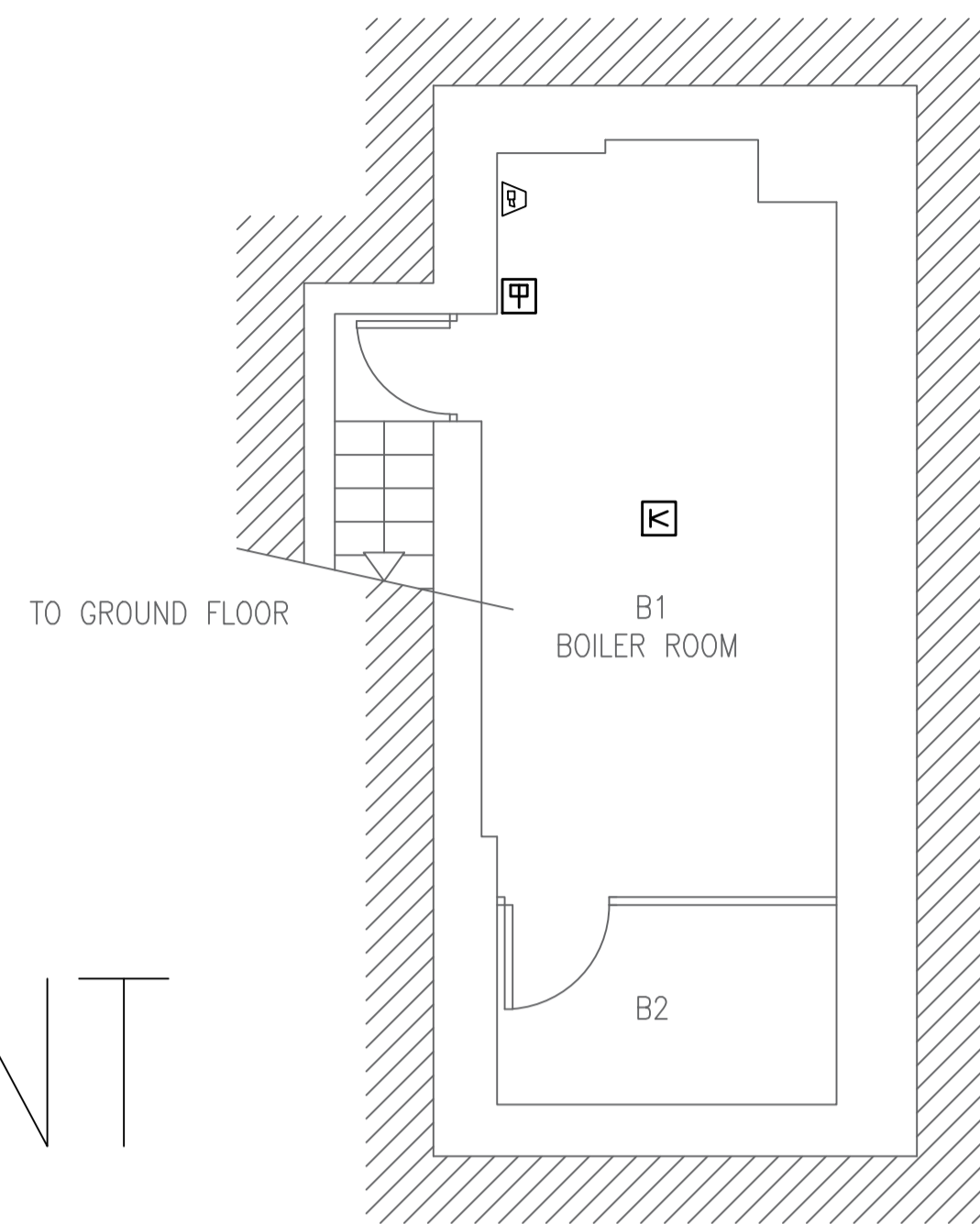




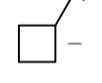
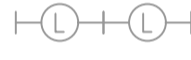
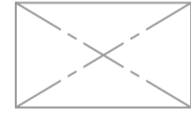



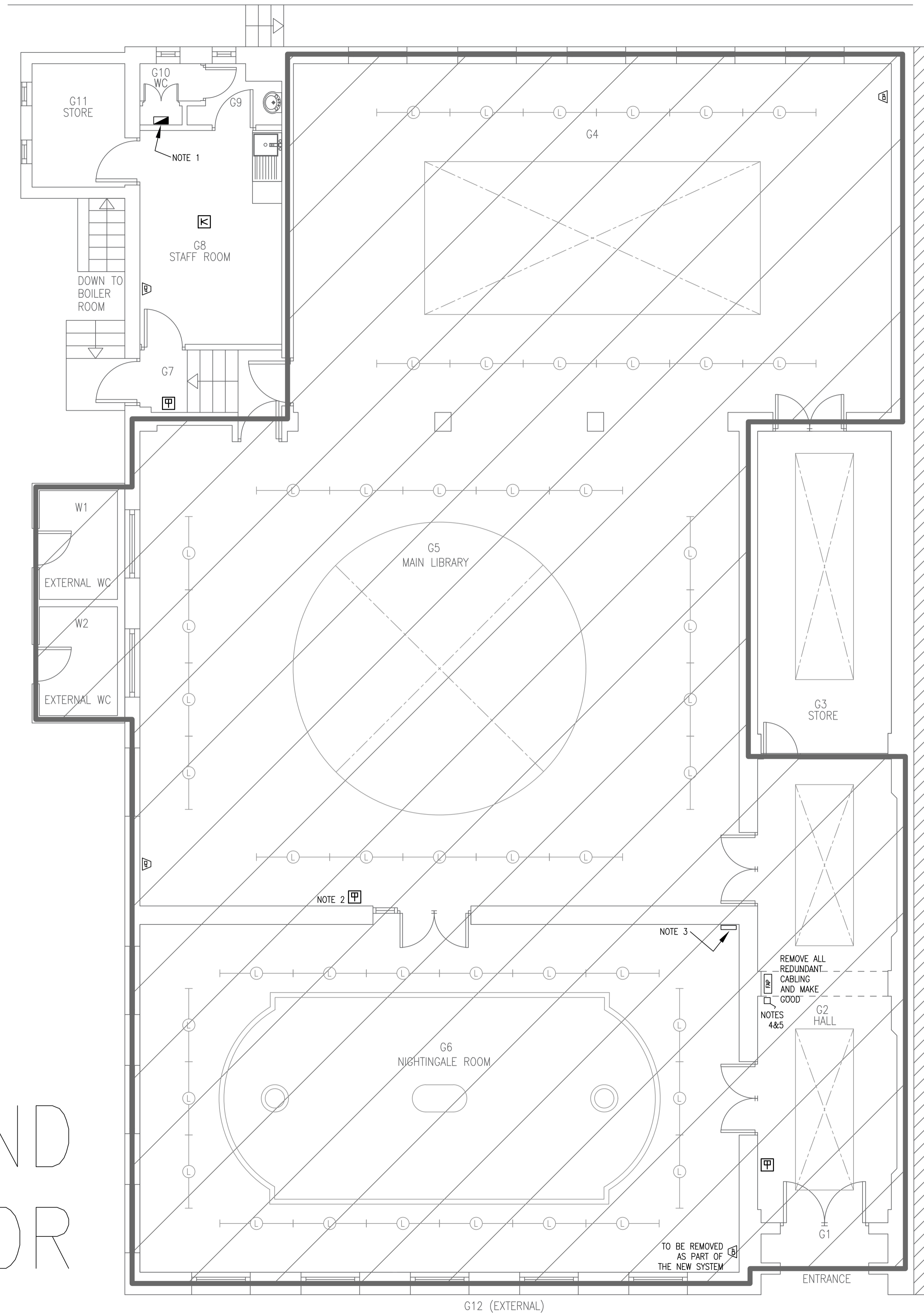
# BASEMENT



## LEGEND

-  - HEAT DETECTOR - TO BE REMOVED
-  - SOUNDER - TO BE REMOVED
-  - MANUAL BREAK GLASS UNIT - TO BE REPLACED
-  - MAIN FIRE ALARM PANEL - TO BE REMOVED ALONG WITH ASSOCIATED CABLING
-  - FIRE ALARM DP KEYSWITCH ISOLATOR - TO BE REMOVED ALONG WITH ASSOCIATED CABLING
-  - SUSPENDED MODULAR LINEAR LIGHTING SYSTEM (EXISTING RETAINED)
-  - ROOFLIGHT
-  - VISITOR ACCESSIBLE

# GROUND FLOOR



## notes

1. LOCATION OF DNO SERVICE HEAD & METER ALONG WITH THE LIBRARIES DISTRIBUTION BOARD.
2. IT IS ENVISAGED THAT THIS BREAK GLASS UNIT CAN BE REMOVED.
3. REMOVE UNSIGHTLY TRUNKING AND ANY REDUNDANT CABLING WITHIN THE CORNER. THE CONTRACTOR SHALL ENSURE THAT ANY RETAINED CABLING IS PAINTED THE SAME COLOUR AS THE WALL BEHIND.
4. AN EXISTING PROPRIETARY FIRE ALARM ISOLATOR IS IN-SITU TO SUPPLY THE MAIN PANEL.  
  
IT IS UNKNOWN IF THE UTILISED CABLE IS FIRE-RATED AND HOW IT IS SUPPLIED FROM THE LIBRARIES DISTRIBUTION BOARD.
5. EXISTING VISIBLE WIRING ABOVE WALL EQUIPMENT TO BE REMOVED ON G2 AND G6 SIDES AND ALL MADE GOOD.
6. WHERE PRACTICAL AND IT DOES NOT IMPAIR ITS OPERATION, ALL NEW & EXISTING DEVICES/EQUIPMENT (INCLUDING THE LIGHTINGS 'CLICK' CEILING ROSES) ARE TO BE PAINTED (EVENLY & WITHOUT RUNS) SO AS TO MATCH THE SURROUNDING WALL/CEILING SURFACE TO WHICH IT IS FIXED.
7. ALL REDUNDANT CABLING IS TO BE REMOVED AND ANY SURFACES MADE GOOD.

Notes  
Do not scale. All dimensions to be checked on site. Errors to be reported to supervising officer.

Rev	Drawn	Date
C	SAMPLES REDUCED IN SIZE, NOTE 3 AMENDED AND NOTES 4 & 7 ADDED.	S.M.C. 17.07.23
B	FOUR MORE TO LEGEND (LUMINAIRES), FAP NOTES AND ROOMS G7 & G11 DETAILS ADDED.	S.M.C. 15.12.22
A	INCORPORATING ARCHITECTS COMMENTS.	S.M.C. 06.11.22



**P.G. Wilkinson BSc MSc MRICS**  
City Surveyor

**CITY SURVEYOR'S DEPARTMENT**  
Corporate Property Group:  
Plans & Research Section

Project :  
**KEATS COMM. LIBRARY**  
10 KEATS GROVE  
LONDON NW3 2RR

Drawing :  
**BASEMENT & GRD FLR**  
EXISTING FIRE ALARM  
SYSTEM LAYOUT

Scale at A1 : 1:50	Drawn by : S.M.C.
Des : S.M.C.	App :
Date : NOV 21	Pro code UPRN
Drawing No: COL/KL/68/00	
Revision	C