

PHOTO RECORD

THE CITY OF LONDON CORPORATION

KEATS HOUSE
10 KEATS GROVE, HAMPSTEAD
LONDON NW3 2RR

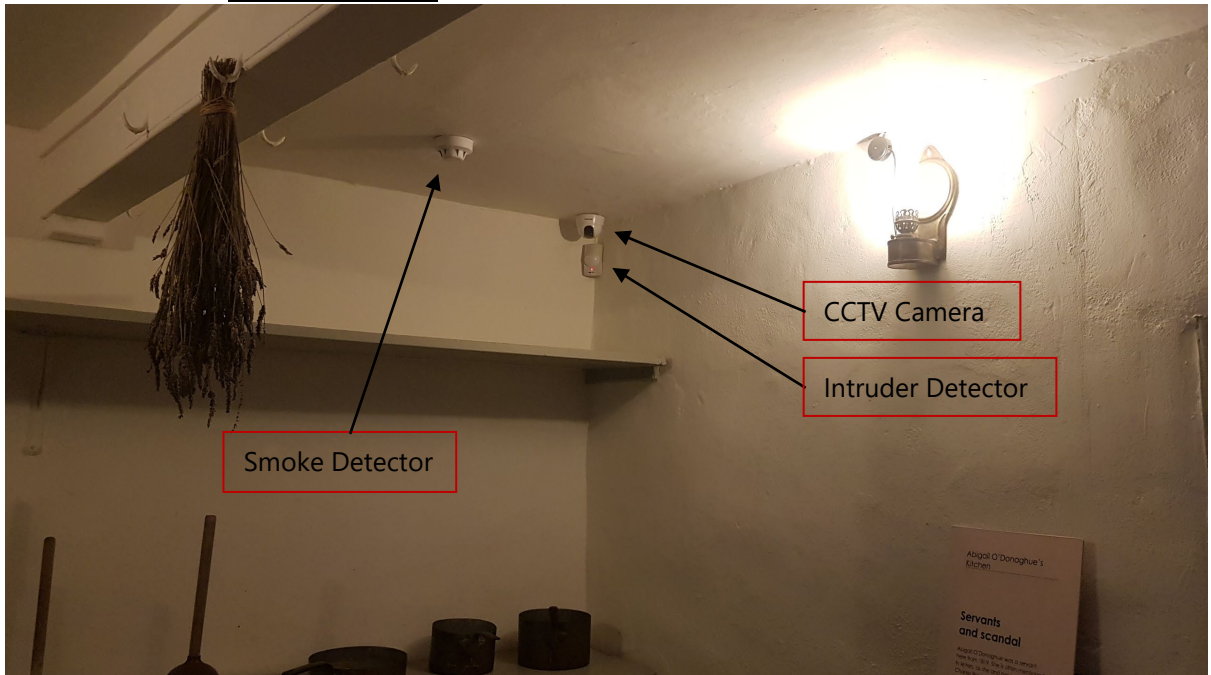
CCTV, FIRE AND INTRUDER ALARM SYSTEMS



BASEMENT

B1

KEATS' KITCHEN



CCTV	New camera to be a direct replacement and connected to existing cabling.
Intruder Alarm	New detector to be a direct replacement and connected to existing cabling.
Fire Alarm	Existing detector to be replaced with a wireless smoke detector mounted onto a base sounder and beacon.

B5

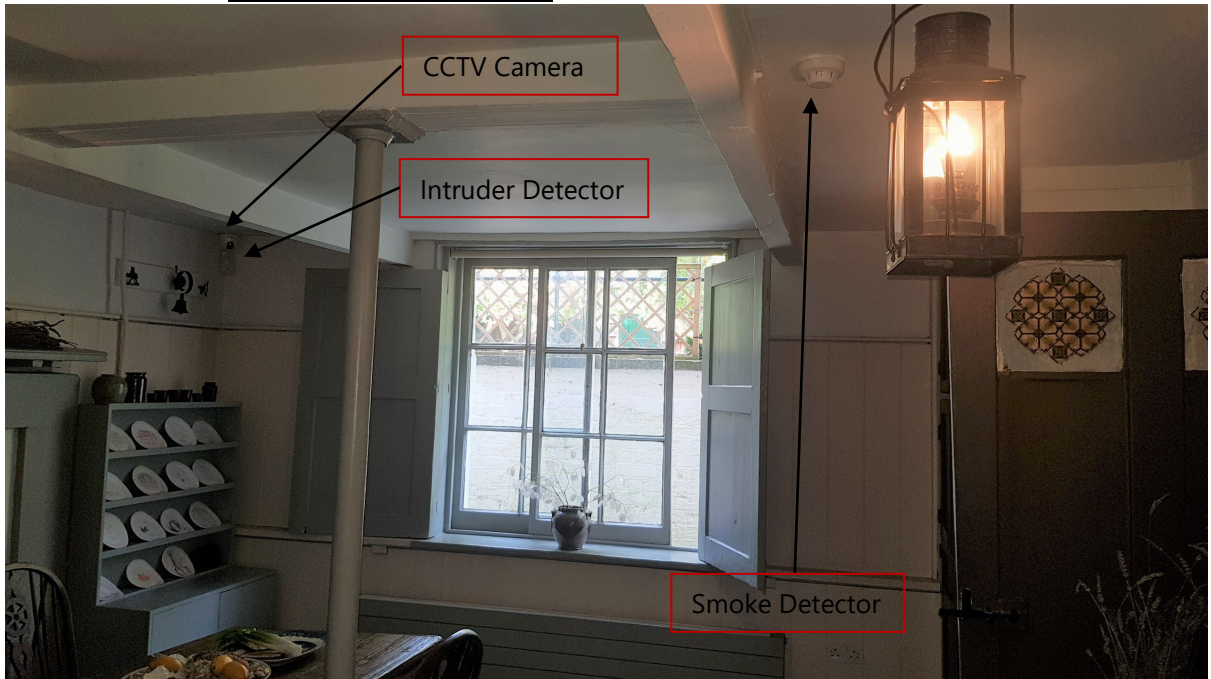
HALLWAY



Fire Alarm	Existing manual break glass to be replaced with a wireless type. Existing detector hidden behind (downstand beam) to be replaced with a wireless smoke detector.
Intruder Alarm	New door contact to be a direct replacement and connected to existing cabling.

B6

MRS BRAWNE'S KITCHEN



CCTV

New camera to be a direct replacement and connected to existing cabling.

Intruder Alarm

New detector to be a direct replacement and connected to existing cabling.

Fire Alarm

Existing detector to be replaced with a wireless smoke detector mounted onto a base sounder and beacon.

B7

DOWNSTAIRS HALL



Fire Alarm

Existing manual break glass to be replaced with a wireless type, therefore the section of mini trunking dropping down from the ceiling will be removed. Redundant holes within the wall will be filled and painted.

B7/2

STORE

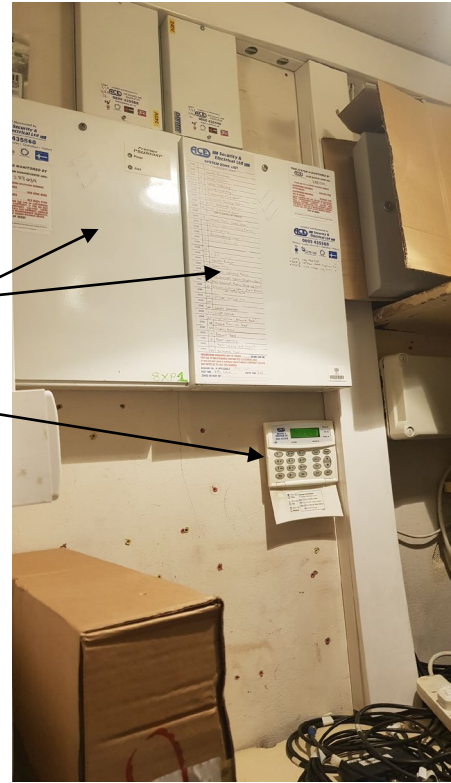


Main Fire Alarm Panel & Ancillaries

Intruder Alarm Panels

Keypad

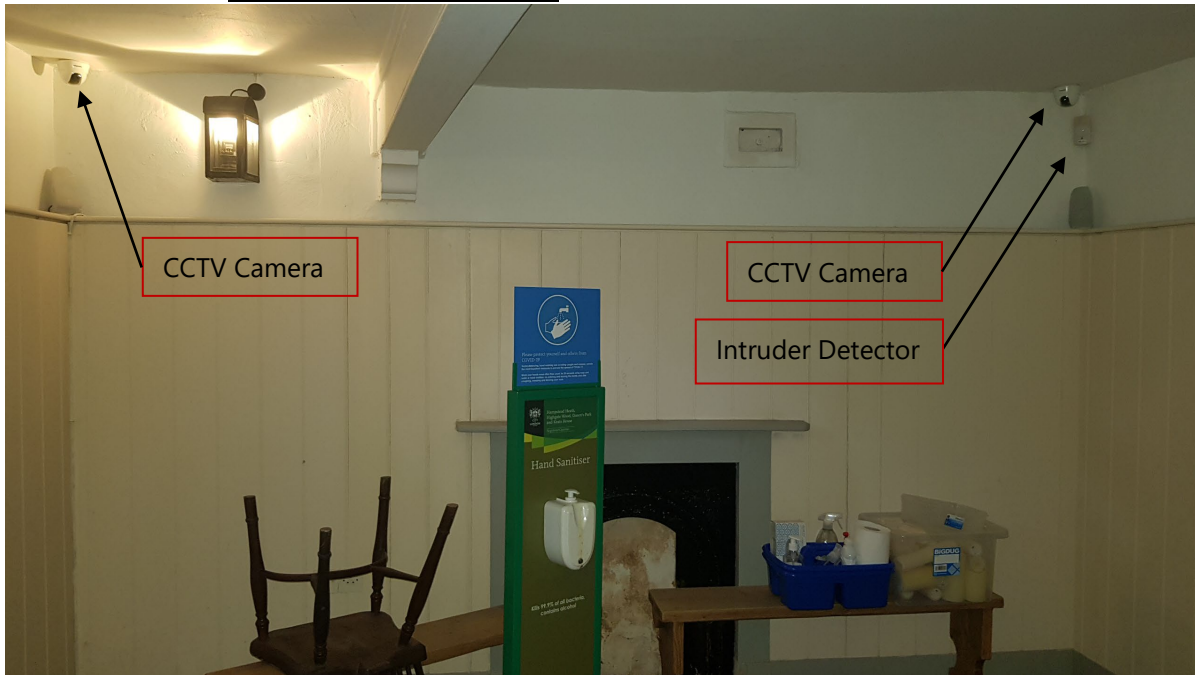
CCTV Monitor & Hard Drive



- CCTV Monitor and Hard Drive to be direct replacements and connected to existing cabling.
- Intruder Alarm Panels and Keypad to be direct replacements and connected to existing cabling. Redundant holes within the wall will be filled and painted.
- Fire Alarm Main Fire Alarm Panel and Ancillaries' to be removed. New wireless smoke detector to be installed.

B8

SERVANTS DINING ROOM



CCTV Camera

CCTV Camera

Intruder Detector

- CCTV New cameras to be direct replacements and connected to existing cabling.
- Intruder Alarm New detector to be a direct replacement and connected to existing cabling.
- Fire Alarm Existing detector (not shown) is to be replaced with a wireless smoke detector mounted onto a base sounder and beacon.

B9

HALL



Smoke Detector

Fire Alarm Sounder

CCTV Camera

Intruder Detector

CCTV

Intruder Alarm

Fire Alarm

New camera to be a direct replacement and connected to existing cabling.

New detector to be a direct replacement and connected to existing cabling.

Existing detector to be replaced with a wireless smoke detector mounted onto a base sounder.

Note:- Existing sounder to be removed and redundant holes within the wall will be filled and painted.

B11

HALL



- CCTV Camera
- Intruder Detector
- Smoke Detector
- Intruder Alarm Sounder

VIEW 1



VIEW 2

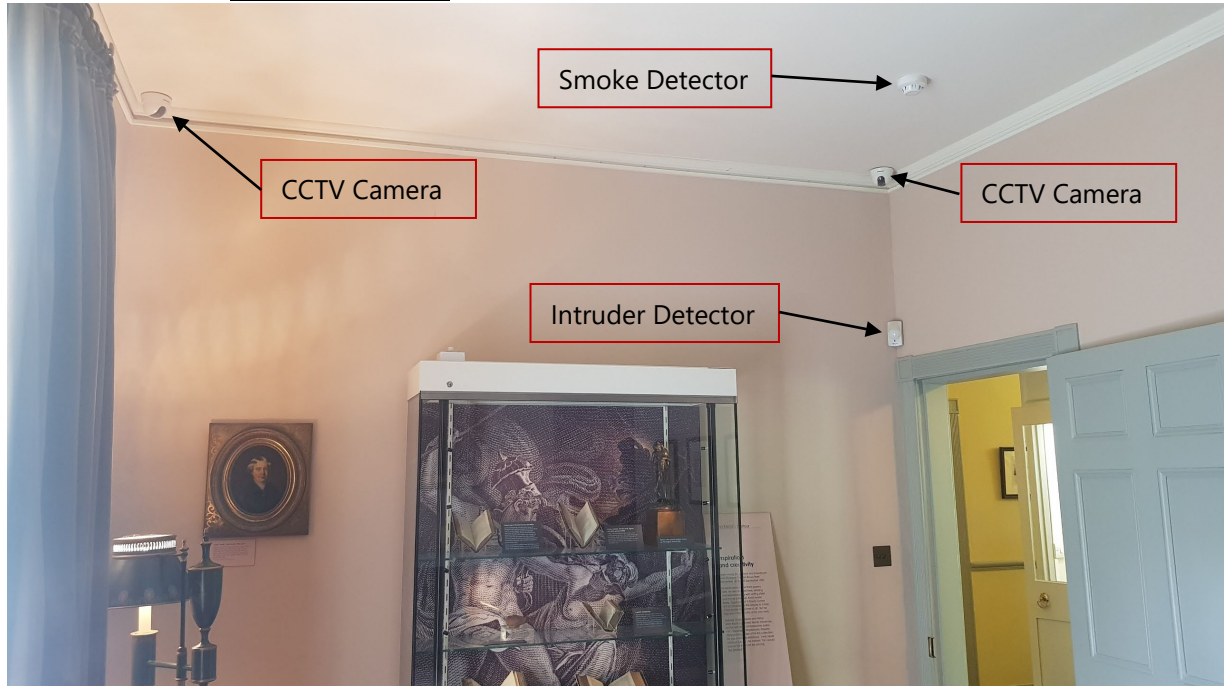
CCTV
Intruder Alarm
Fire Alarm

New camera to be a direct replacement and connected to existing cabling.
New detector and sounder to be direct replacements and connected to existing cabling.
Existing detector to be replaced with a wireless smoke detector mounted onto a base sounder.

GROUND FLOOR

G1

KEATS' PARLOUR



CCTV

Intruder Alarm

Fire Alarm

New cameras to be direct replacements and connected to existing cabling.

New detector to be a direct replacement and connected to existing cabling.

Existing detector to be replaced with a wireless smoke detector mounted onto a base sounder and beacon.

G2

HALLWAY



Fire Alarm Sounder

Smoke Detector

VIEW 1
FROM HALLWAY LOOKING TOWARDS REAR DOOR

Fire Alarm

Existing detector to be replaced with a wireless smoke detector mounted onto a base sounder.

Note 1:- Existing sounder to be removed and redundant holes within the wall will be filled and painted.

Note 2:- Existing manual break glass (not shown by door) is to be replaced with a wireless type.



Smoke Detector

CCTV Camera

Intruder Detector

VIEW 2
FROM REAR DOOR LOOKING DOWN HALLWAY (G2)
TOWARDS FRONT DOOR AND HALLWAY (G5)

CCTV

New camera to be a direct replacement and connected to existing cabling.

Intruder Alarm

New detector to be a direct replacement and connected to existing cabling.

G3

VISITORS WELCOME POINT



CCTV Camera

Intruder Detector

VIEW 1

Intruder Alarm New detector to be a direct replacement and connected to existing cabling.



Smoke Detector

Intruder Alarm System

VIEW 2

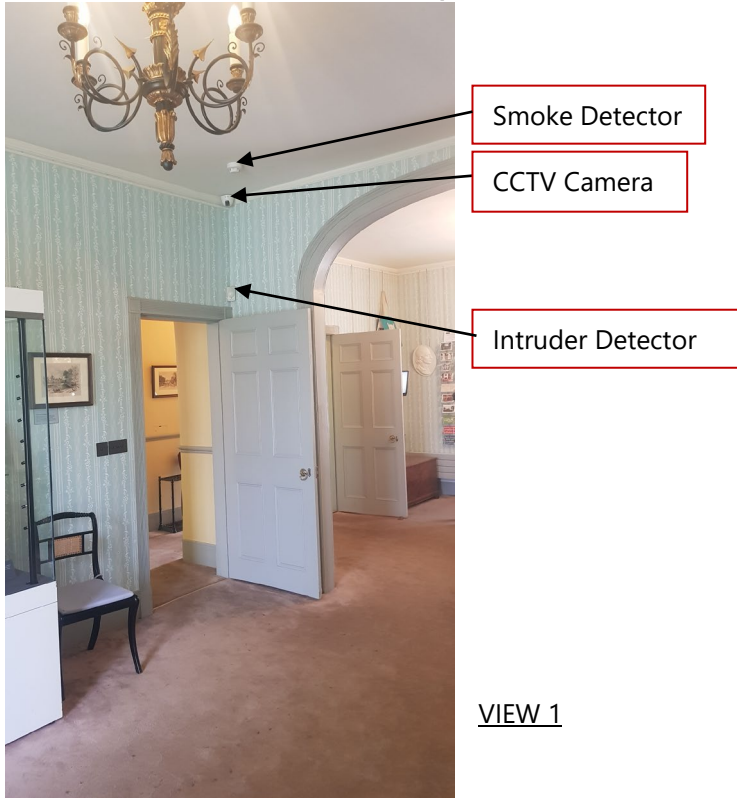
FROM DISPLAY ROOM (MRS BRAWNE'S ROOM) INTO VISITORS WELCOME POINT (G3)

Intruder Alarm New Panic Button (mounted under desk) is to be a direct replacement and connected to existing cabling.

Fire Alarm Existing detector to be replaced with a wireless smoke detector mounted onto a base sounder and beacon.

G4

DISPLAY ROOM (MRS BRAWNE'S ROOM)



CCTV
Intruder Alarm
Fire Alarm

New camera to be a direct replacement and connected to existing cabling.
New detector to be a direct replacement and connected to existing cabling.
Existing detector to be replaced with a wireless smoke detector mounted onto a base sounder and beacon.



Intruder Alarm

New detector to be a direct replacement and connected to existing cabling.

G5

HALLWAY



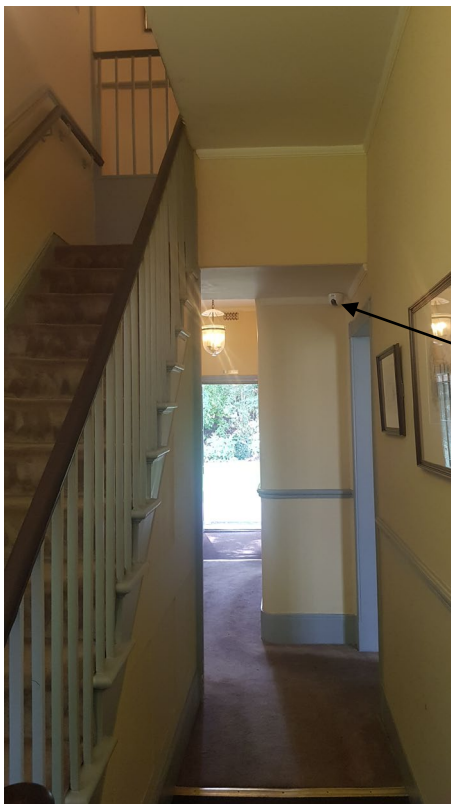
Smoke Detector

VIEW 1

FROM HALLWAY LOOKING INTO STAIRWELL DOWN TO BASEMENT HALL (B7)

Fire Alarm

New ceiling mounted wireless smoke detector to be fitted within the void on the inside the door frame that leads down to basement.



CCTV Camera

VIEW 2

FROM HALLWAY LOOKING TOWARDS HALLWAY (B2) AND REAR DOOR

CCTV

New camera to be a direct replacement and connected to existing cabling.

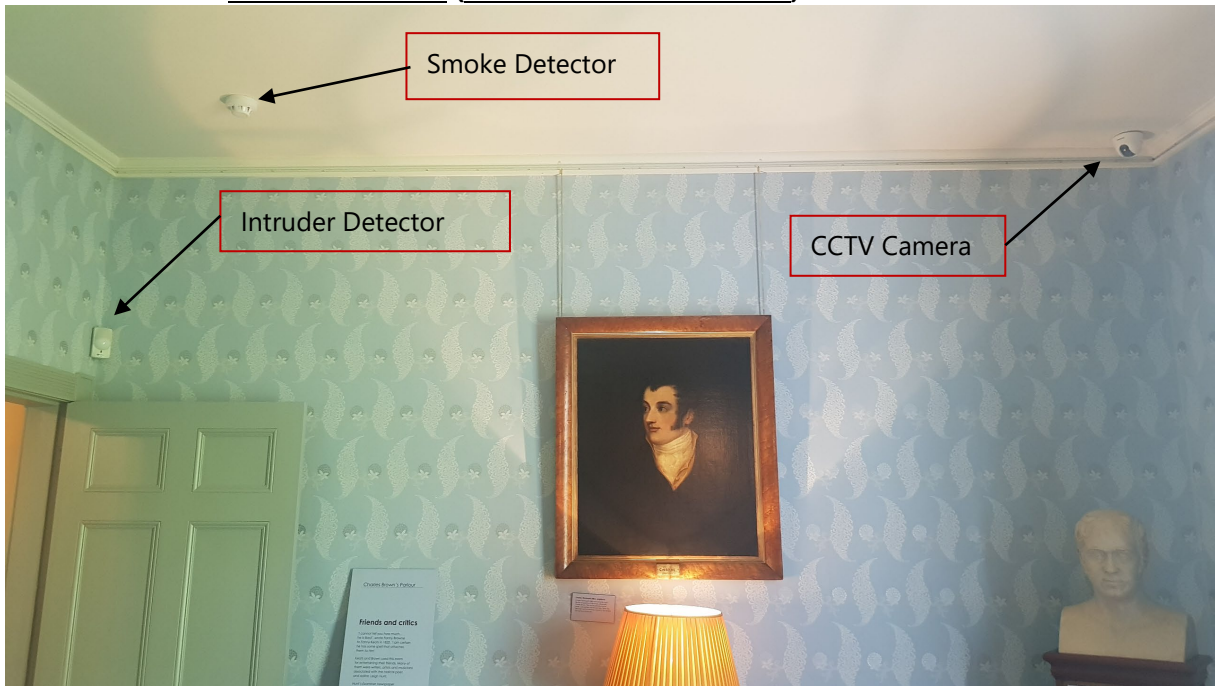


- Smoke Detector
- Intruder Alarm Sounder
- Intruder Alarm Keypad
- Manual Break Glass Unit
- Fire Alarm Repeater Panel

VIEW 3
FROM HALLWAY LOOKING TOWARDS FRONT DOOR

- Intruder Alarm New detector and keypad are to be a direct replacement and connected to existing cabling.
- Fire Alarm Existing detector to be replaced with a wireless smoke detector. Existing manual break glass to be replaced with a wireless type.
Note:- Existing repeater panel and associated accessories are to be removed and redundant holes within the wall will be filled and painted.

G6 FRONT PARLOUR (BROWN'S SITTING ROOM)



- Smoke Detector
- Intruder Detector
- CCTV Camera

- CCTV New camera to be a direct replacement and connected to existing cabling.
- Intruder Alarm New detector to be a direct replacement and connected to existing cabling.
- Fire Alarm Existing detector to be replaced with a wireless smoke detector mounted onto a base sounder and beacon.

G7

HALLWAY



Smoke Detector

Intruder Detector – Hallway (G2)

CCTV Camera – Hallway (G5)

VIEW 1

LOOKING DOWN HALLWAY TOWARDS DISPLAY ROOM (G4)

CCTV
Intruder Alarm
Fire Alarm

New camera to be a direct replacement and connected to existing cabling.
New detector to be a direct replacement and connected to existing cabling.
Existing detector to be replaced with a wireless smoke detector.



Smoke Detector

VIEW 2

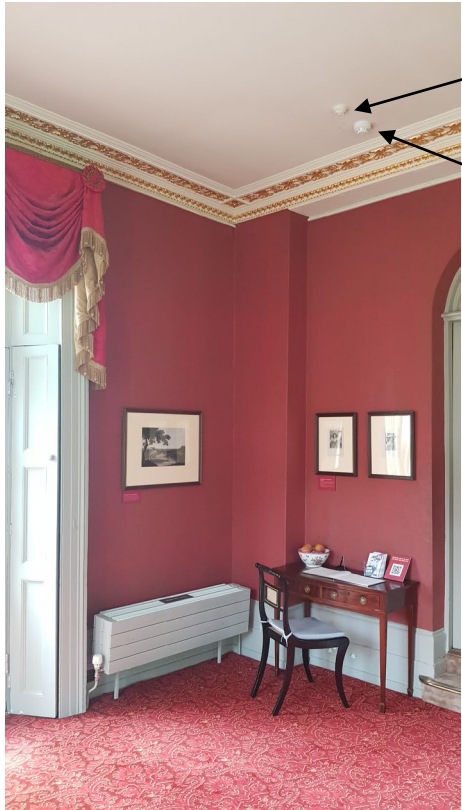
LOOKING DOWN HALLWAY TOWARDS MISS CHESTER'S DRAWING ROOM (G8/1)

Fire Alarm

Same item as above.

G8/1

MISS CHESTER'S DRAWING ROOM



Fire System – End-Of-Line Unit

Smoke Detector

VIEW 1

Fire Alarm

Existing detector to be replaced with a wireless smoke detector mounted onto a base sounder and beacon.

Note:- End-of-line unit to be removed and redundant holes within the ceiling will be filled and painted.



CCTV Camera

Smoke Detector & End-Of-Line Unit

Intruder Detector

VIEW 2

CCTV

Intruder Alarm

Fire Alarm

New camera to be a direct replacement and connected to existing cabling.

New detector to be a direct replacement and connected to existing cabling.

Same item as above.

G8/2

CONSERVATORY



VIEW 1



VIEW 2

CCTV Camera

Intruder Detector

Manual Break Glass Unit

CCTV
Intruder Alarm
Fire Alarm

New camera to be a direct replacement and connected to existing cabling.
New detector to be a direct replacement and connected to existing cabling.
Existing manual break glass to be replaced with a wireless type.
Note:- Cable and clips to be removed and redundant holes will be filled and painted.

FIRST FLOOR

F1

KEAT'S BEDROOM



VIEW 1

Fire Alarm

Existing detector to be replaced with a wireless smoke detector mounted onto a base sounder and beacon.



VIEW 2

CCTV

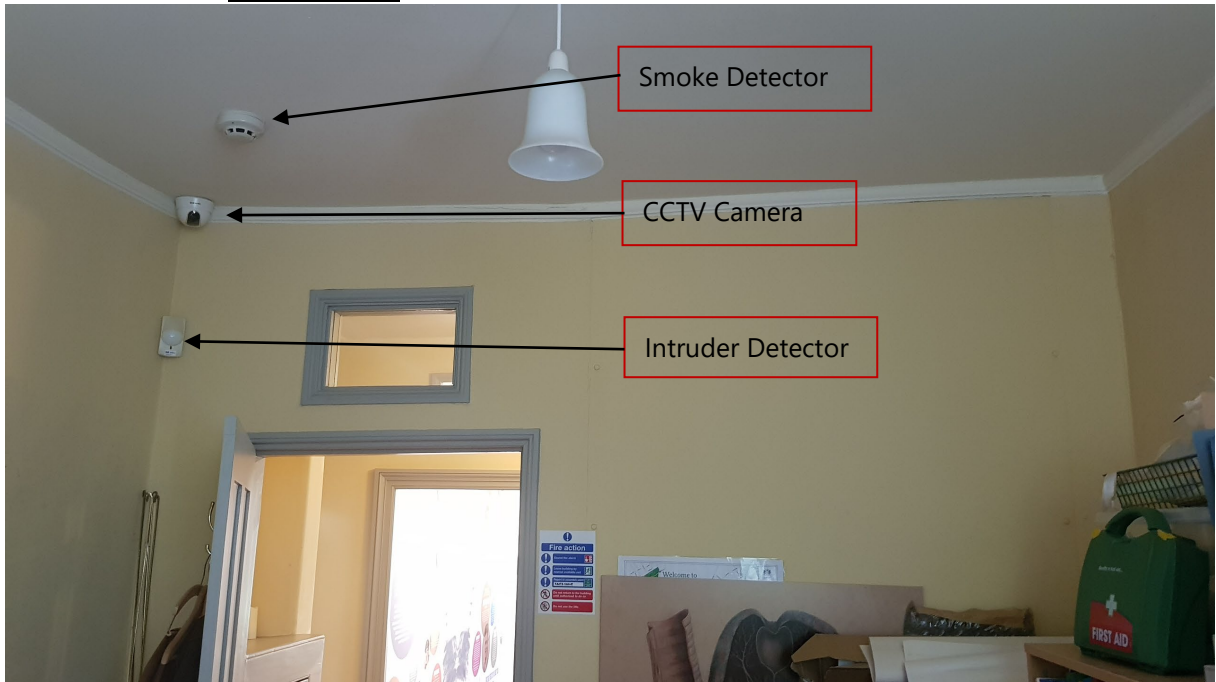
New camera to be a direct replacement and connected to existing cabling.

Intruder Alarm

New detector to be a direct replacement and connected to existing cabling.

F2

STAFF OFFICE

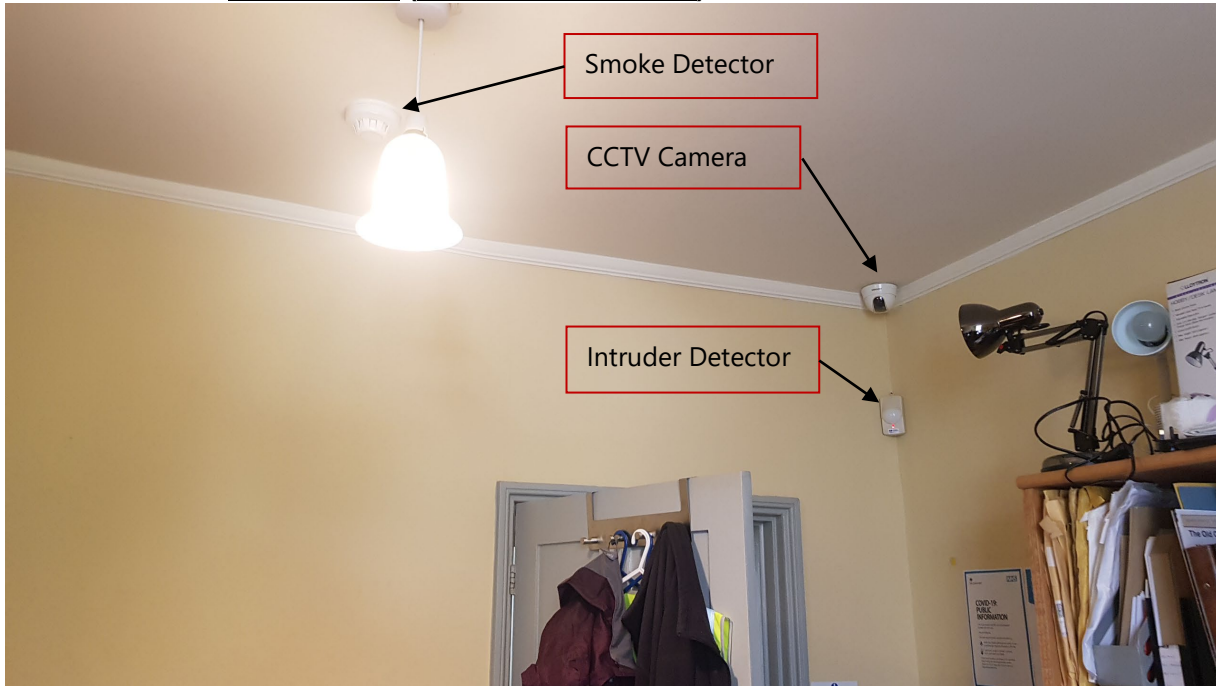


CCTV
Intruder Alarm
Fire Alarm

New camera to be a direct replacement and connected to existing cabling.
New detector to be a direct replacement and connected to existing cabling.
Existing detector to be replaced with a wireless smoke detector mounted onto a base sounder.

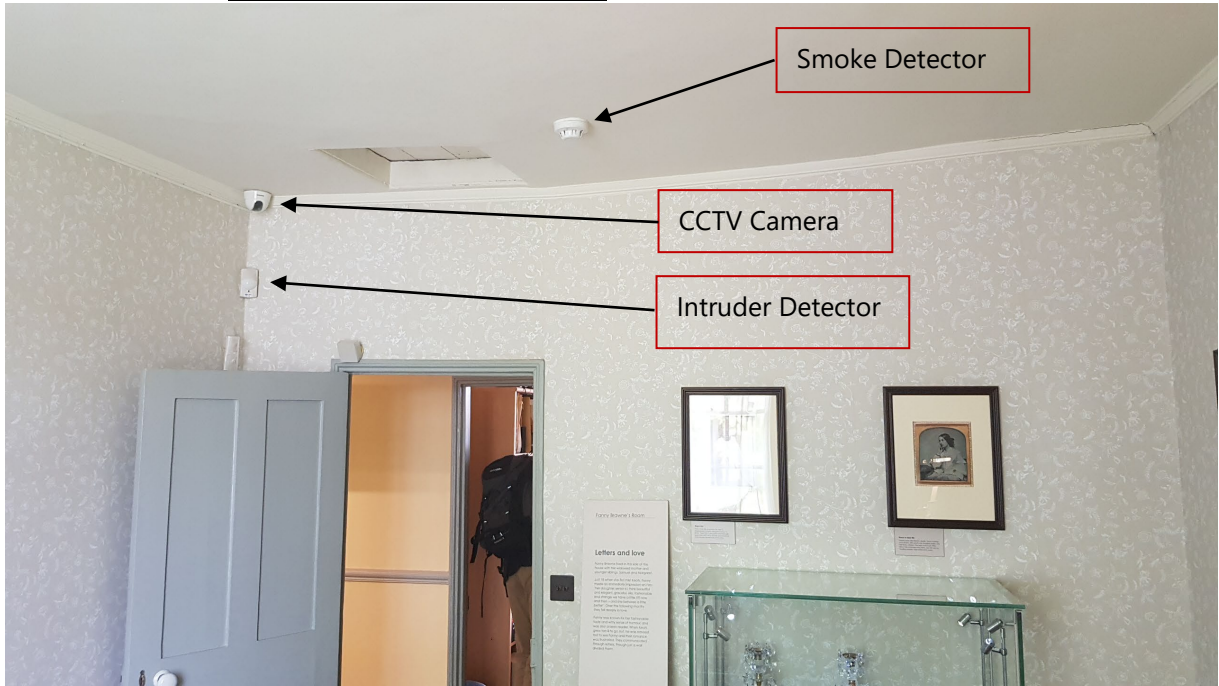
F3

STAFF OFFICE (BRAWNE'S BEDROOM)



CCTV
Intruder Alarm
Fire Alarm

New camera to be a direct replacement and connected to existing cabling.
New detector to be a direct replacement and connected to existing cabling.
Existing detector to be replaced with a wireless smoke detector.



CCTV
Intruder Alarm
Fire Alarm

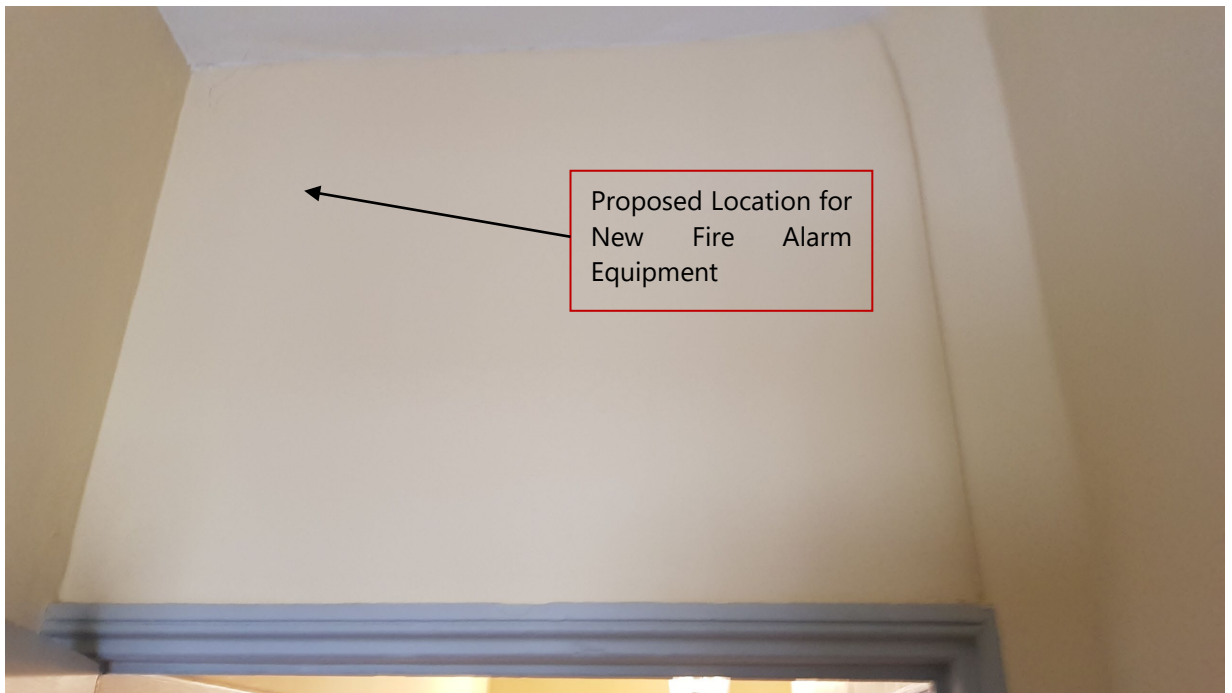
New camera to be a direct replacement and connected to existing cabling.
New detector to be a direct replacement and connected to existing cabling.
Existing detector to be replaced with a wireless smoke detector mounted onto a base sounder and beacon.

F4/3

STORE



VIEW 1



VIEW 2

Fire Alarm

New wireless detector to be installed.

New Radio Hub (RH) & Power Supply Unit (PSU) to be installed above door.



VIEW 3

Intruder Alarm It is envisaged that the existing intruder alarms expander and radio receiver (for the mobile panic button) is to be relocated to the Store (B7/2) within the basement next to the panel.

Note 1:- The relocation of the equipment is subject to a radio survey. If the survey is found to be unsatisfactory, the existing equipment will remain in-situ.

Note 2:- If the equipment can be removed, the redundant holes within the wall will be filled and painted.

F5/1

DISPLAY AREA



CCTV Camera

VIEW 1



VIEW 2

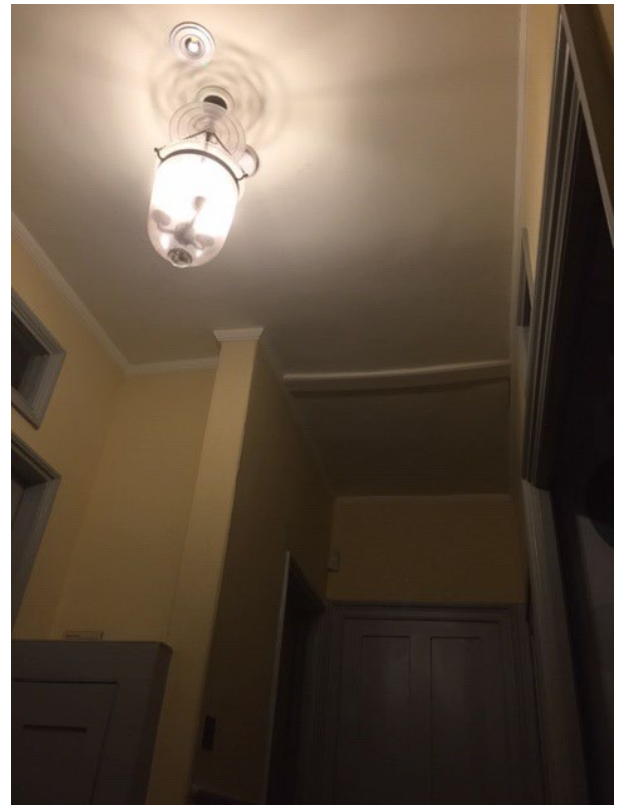
- | | |
|----------------|--|
| CCTV | New camera to be a direct replacement and connected to existing cabling. |
| Intruder Alarm | Existing detector (not shown by window) is to be a direct replacement and connected to existing cabling. |
| Fire Alarm | New wireless smoke detector is to be installed and mounted onto a base sounder and beacon. |

F5/2

UPSTAIRS HALL



VIEW 1



VIEW 2

FROM UPSTAIRS HALL (F/2) LOOKING TOWARDS HALL (F4/2) AND STORE DOOR



VIEW 3

FROM UPSTAIRS HALL (F/2) LOOKING TOWARDS STAFF OFFICE (F2)

Intruder Detector



VIEW 4

FROM UPSTAIRS HALL (F/2) LOOKING TOWARDS HALL (F4/2) AND STORE DOOR

Intruder Alarm
Fire Alarm

New detector to be a direct replacement and connected to existing cabling. Existing detector to be replaced with a wireless smoke detector but relocated so as it is not over staircase.

Note:- Redundant holes within the ceiling will be filled and painted.

New wireless smoke detector mounted onto a base sounder is to be installed in Hall (4/2).

New break glass unit to be installed onto wall above first stair tread.

F6

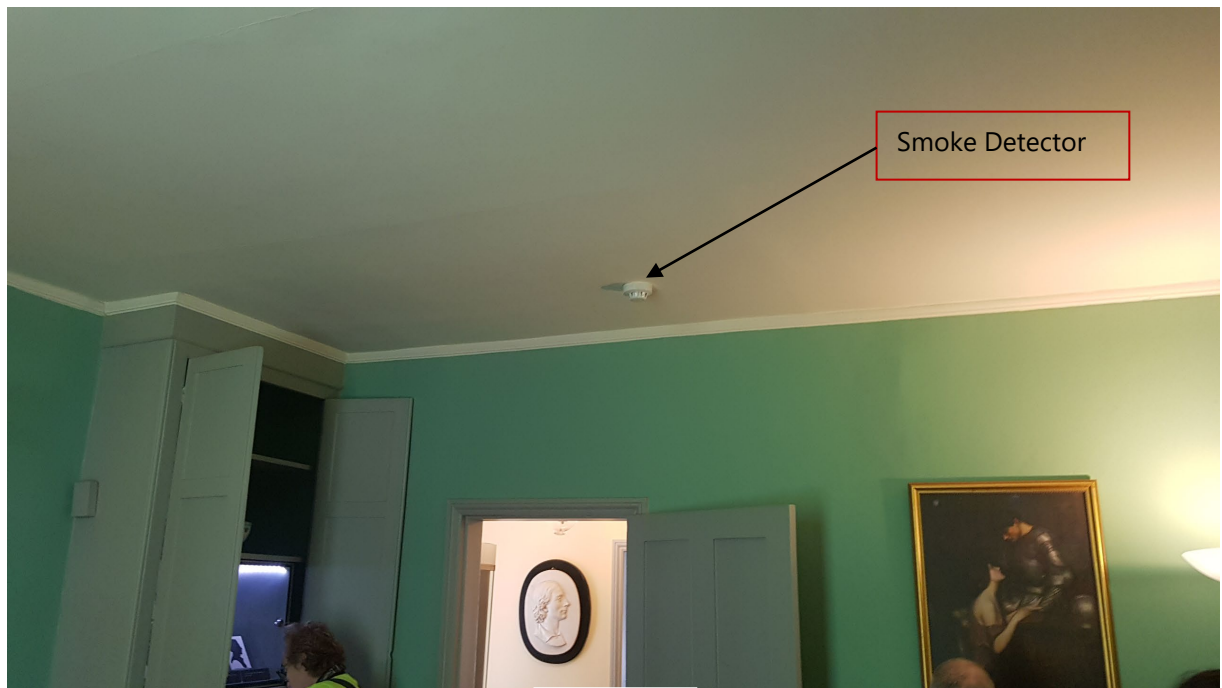
BROWN'S BEDROOM



CCTV Camera

Intruder Detector

VIEW 1



Smoke Detector

VIEW 2

Fire Alarm

Existing detector to be replaced with a wireless smoke detector mounted onto a base sounder and beacon.



VIEW 3

CCTV New camera to be a direct replacement and connected to existing cabling.
 Intruder Alarm New detector to be a direct replacement and connected to existing cabling.

F7 HALLWAY



CCTV New camera to be a direct replacement and connected to existing cabling.
 Intruder Alarm New detector to be a direct replacement and connected to existing cabling.
 Fire Alarm New wireless smoke detector is to be installed.

ROOF VOID

Fire Alarm New wireless smoke detection is to be installed.