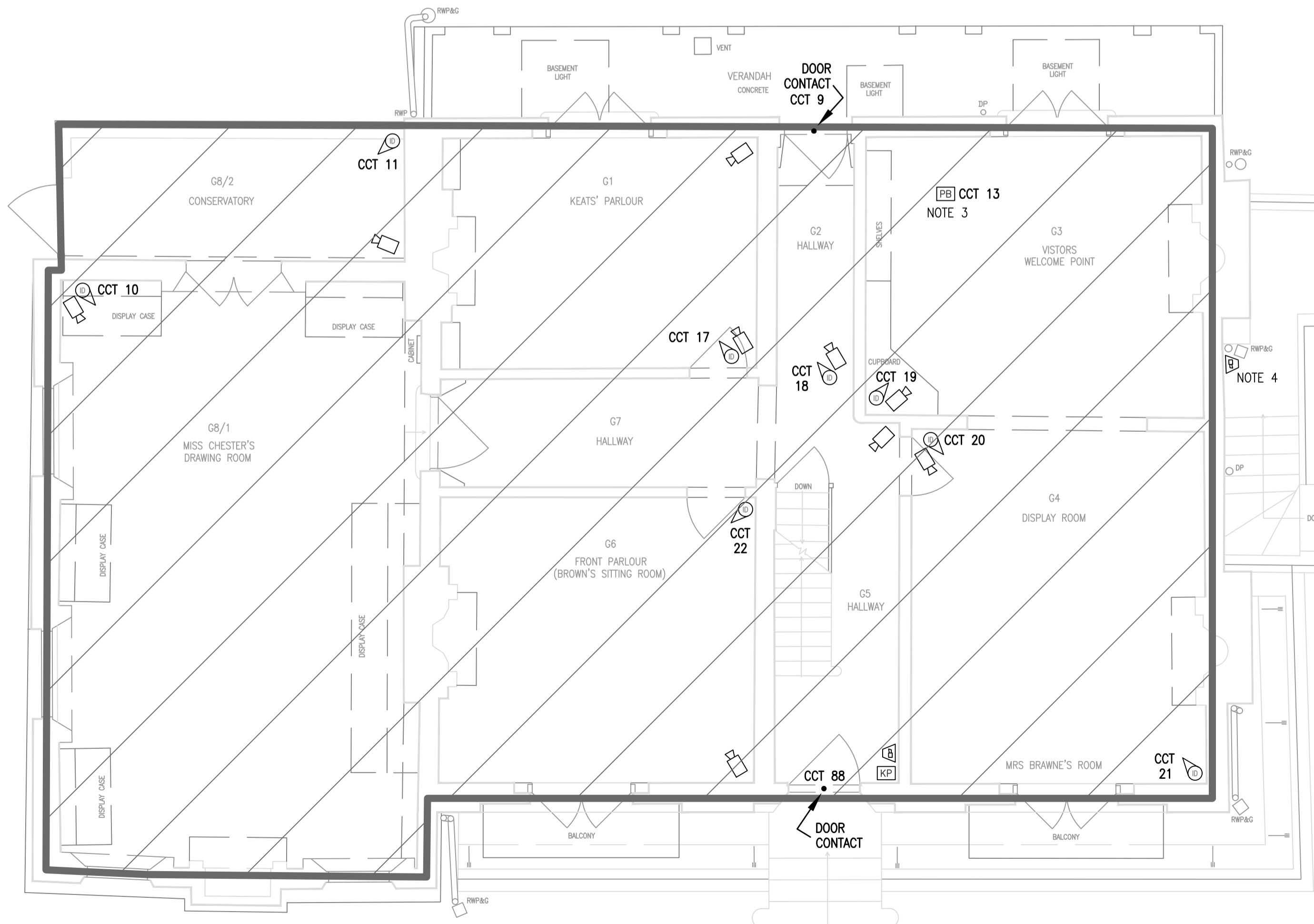


BASEMENT

GROUND FLOOR



LEGEND

- CLOSED CIRCUIT TELEVISION CAMERA - ALL REPLACED (IN SAME LOCATION)
- RECORDING DEVICE - REPLACED (IN SAME LOCATION)
- INTRUDER ALARM CONTROL PANEL - REPLACED (IN SAME LOCATION)
- INTRUDER ALARM KEYPAD - REPLACED (IN SAME LOCATION)
- INTRUDER ALARM PUSH PANIC BUTTON - ALL REPLACED (IN SAME LOCATION)
- INTRUDER ALARM SIREN - ALL REPLACED (IN SAME LOCATION)
- INTRUDER DETECTOR (DIRECTIONAL) - ALL REPLACED (IN SAME LOCATION)
- DOOR OPEN ALARM CONTACT - ALL REPLACED (IN SAME LOCATION)

CCT REF. - INTRUDER ALARM CIRCUIT NO. DETAILS - SEE NOTE 5



notes

1. EXISTING NON-FUSED CONNECTION UNITS ARE IN-SITU TO SUPPLY THE INTRUDER ALARM AND CCTV SYSTEMS. HOWEVER, IT IS UNKNOWN WHAT TYPE OF CABLE HAS BEEN UTILISED AND HOW IT IS SUPPLIED FROM THE HOUSES' DISTRIBUTION BOARD.
THE CONTRACTOR SHALL INVESTIGATE AND IF FOUND TO BE UNSUITABLE NEW CABLES ARE TO BE INSTALLED AND THE CIRCUITS ARE TO BE DEDICATED TO THAT RESPECTIVE SYSTEM ONLY.
2. LOCATION OF DNO TP&N SERVICE HEAD & METER ALONG WITH THE HOUSES DISTRIBUTION HEAD.
3. DOUBLE PUSH PANIC ALARM BUTTON CONNECTED TO THE INTRUDER ALARM. BUTTON MOUNTED ONTO UNDERSIDE OF TABLE.
4. EXTERNAL INTRUDER SIREN INSTALLED ABOVE BASEMENT DOOR - TO BE REPLACED (IN SAME LOCATION).
5. THE EXISTING INTRUDER ALARM CIRCUIT NUMBER AND CABLING WILL BE RETAINED. SEE SQUARE MILE'S QUOTATION FOR FURTHER DETAILS.
6. INTRUDER SIRENS NOT ALL SHOWN. ALL TO BE REPLACED IN THE SAME LOCATION.
7. WHERE PRACTICAL AND IT DOES NOT IMPAIR ITS OPERATION, ALL NEW & EXISTING DEVICES/EQUIPMENT ARE TO BE PAINTED (EVENLY & WITHOUT RUNS) SO AS TO MATCH THE SURROUNDING WALL/CEILING SURFACE TO WHICH IT IS FIXED.
8. ALL REDUNDANT CABLING IS TO BE REMOVED AND ANY SURFACES MADE GOOD.

Notes
Do not scale. All dimensions to be checked on site.
Errors to be reported to supervising officer.

Rev	Drawn	Date
C	S.M.C.	17.07.23
B	S.M.C.	15.12.22
A	S.M.C.	09.11.22



P.G. Wilkinson BSc MSc MRICS
City Surveyor
CITY SURVEYOR'S DEPARTMENT
Corporate Property Group:
Plans & Research Section

Project :
KEATS HOUSE
10 KEATS GROVE
LONDON NW3 2RR
Drawing :
BASEMENT & GRD FLR
EXISTING INT. ALARM &
CCTV SYSTEMS LAYOUTS

Scale at A1 : 1:50	Drawn by : S.M.C.
Des : S.M.C.	App :
Date : NOV 21	Pro code UPRN
Drawing No: COL/KH/68/100	
Revision	C

17/07/2023 15:17:23 Collins, Simon H:\Property Services\Directorate\Technical\Officer_Folders\Simon Collins\Ops\C17 HH, HW & QPHH\Keats House & Library\Draws\CAD\Keats House - Existing CCTV & Intruder Alarm Systems Layouts.dwg