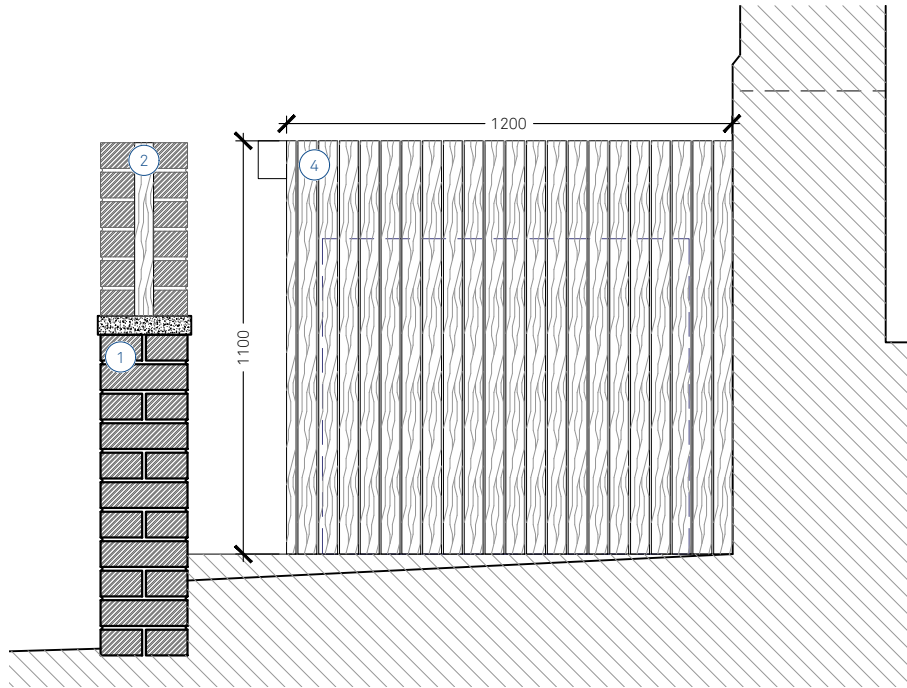
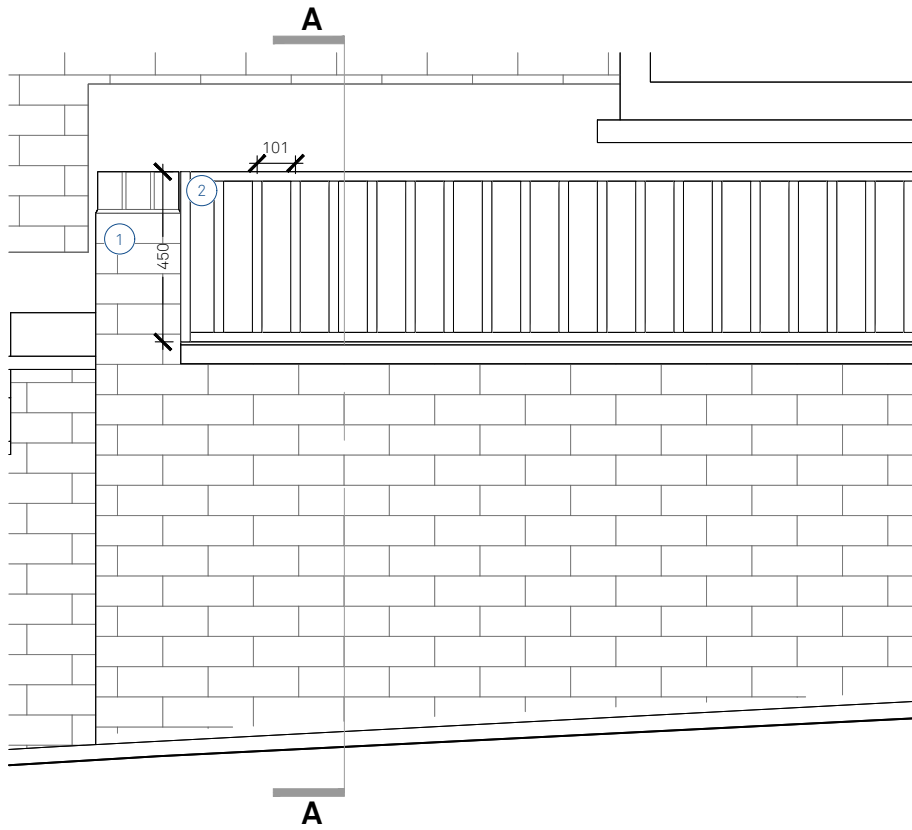


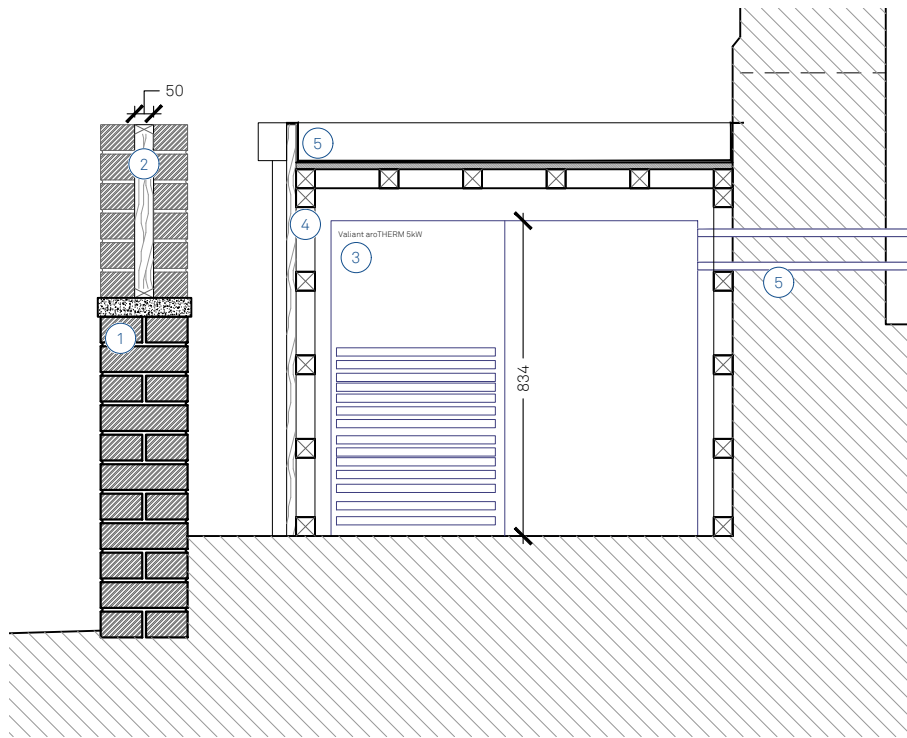
PLAN
DETAIL
ASHP ENCLOSURE AND FRONT BOUNDARY FENCE



ELEVATION
DETAIL
ASHP ENCLOSURE



ELEVATION
DETAIL
FRONT BOUNDARY FENCE



SECTION AA
DETAIL
ASHP ENCLOSURE AND FRONT BOUNDARY FENCE

Key

- 1 Existing brick boundary wall
- 2 New stained timber fence
- 3 Valiant aroTHERM 5kW
- 4 Timber framed enclosure with timber slatted cladding. Timber to be stained.
- 5 New concrete coping
- 6 Pipework from ASHP runs directly from the enclosure to the house through the front wall
- 7 18mm plywood deck. Single ply roofing membrane.

P1 Aug/24 VH/MWM Planning update (ASHP enclosure and front boundary wall)

REV DATE DR/CH DESCRIPTION

Flat A 93 York Way N7 9QF
PL300 revP1 Proposed ASHP Enclosure and Front Boundary Fence

23112 _ PLANNING _ Published 13/08/24

0 cm 50 100

Scale 1:20 @ A3

Do not scale for construction. Use figured dimensions only. All discrepancies to be verified with architect prior to ordering or construction/execution. Confirm all setting out with architect prior to construction. Drawing to be read in conjunction with all other documents. Copyright Architecture for London.

Architecture for London
3-5 Bleeding Heart Yard
London EC1N 8SJ
020 3637 4236
architectureforlondon.com

Architecture
for London.