

Copyright: All rights reserved. This drawing must not be reproduced without permission.

Only the original drawing should be relied upon. Contractors, sub-contractors and suppliers must verify all dimensions on site before commencing any work or making any shop drawings.

All shop drawings to be submitted to the architect / interior designer for comment prior to fabrication.

This drawing is to be read in conjunction with the architect's / interior designer's specification, bills of quantities / schedules, structural, mechanical & electrical drawings and all discrepancies are to be reported to the architect / interior designer.

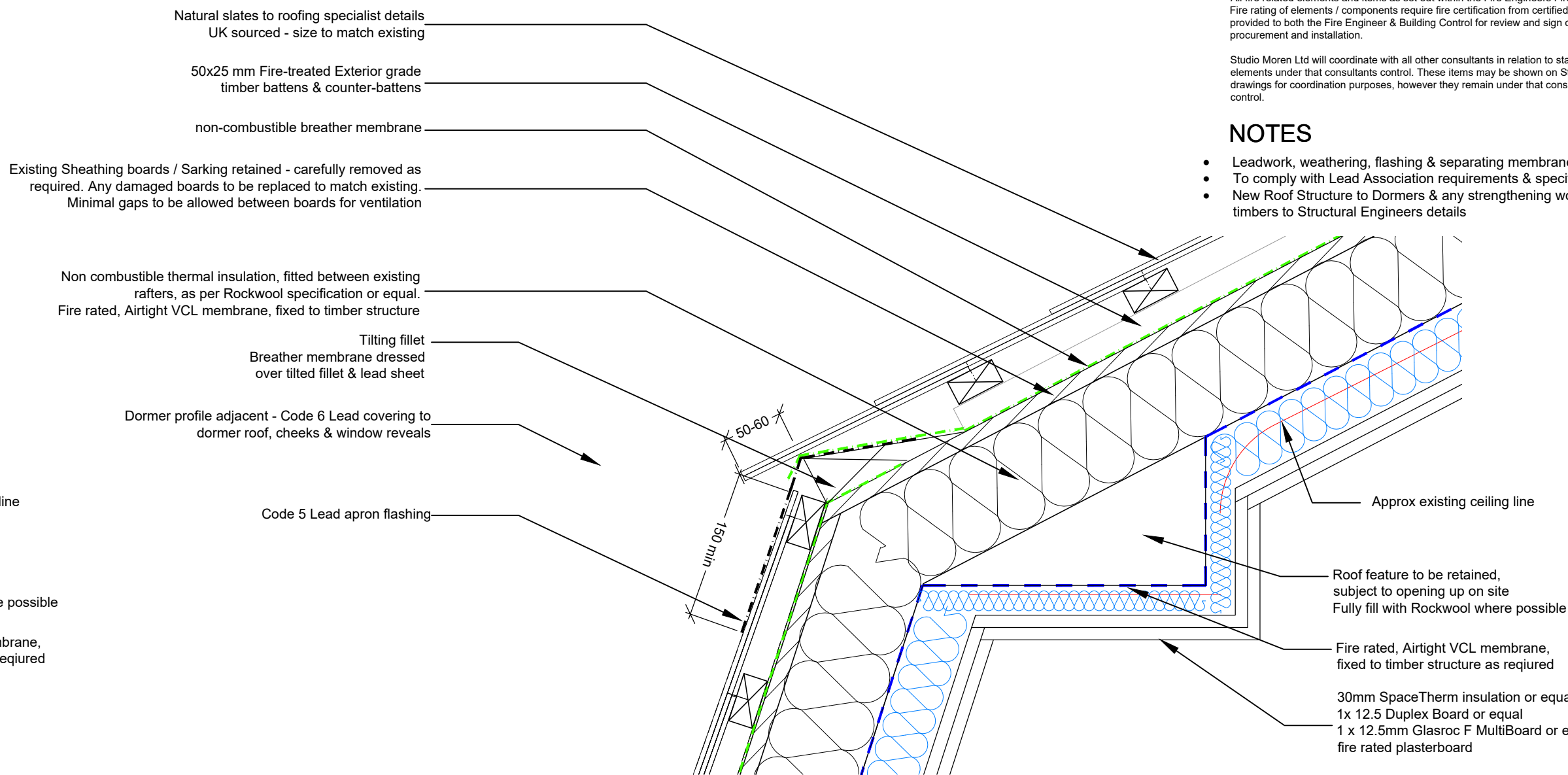
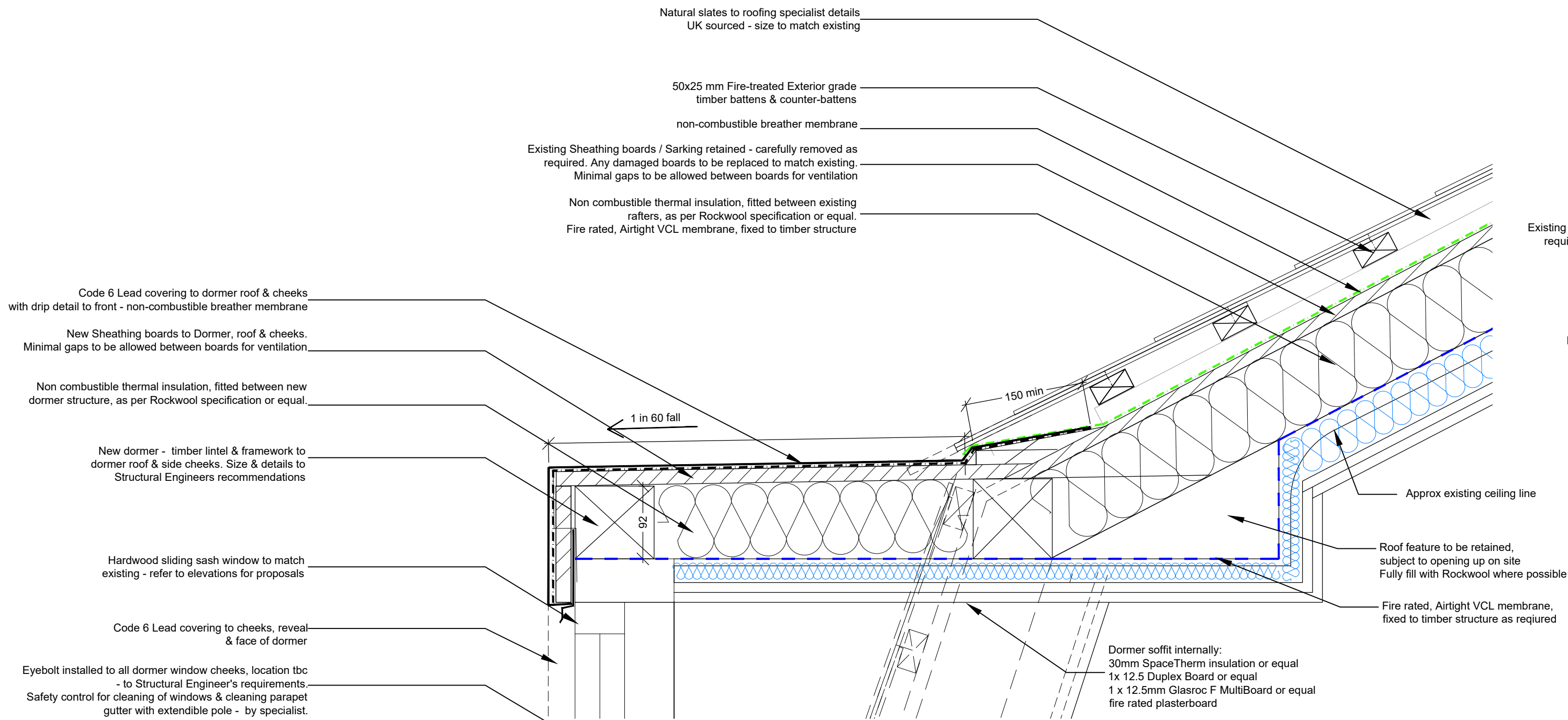
Do not scale from this drawing. Dimensions are in millimetres unless otherwise stated.

All fire related elements and items as set out within the Fire Engineers Fire Strategy Report. Fire rating of elements / components require fire certification from certified test bodies to be provided to both the Fire Engineer & Building Control for review and sign off, prior to procurement and installation.

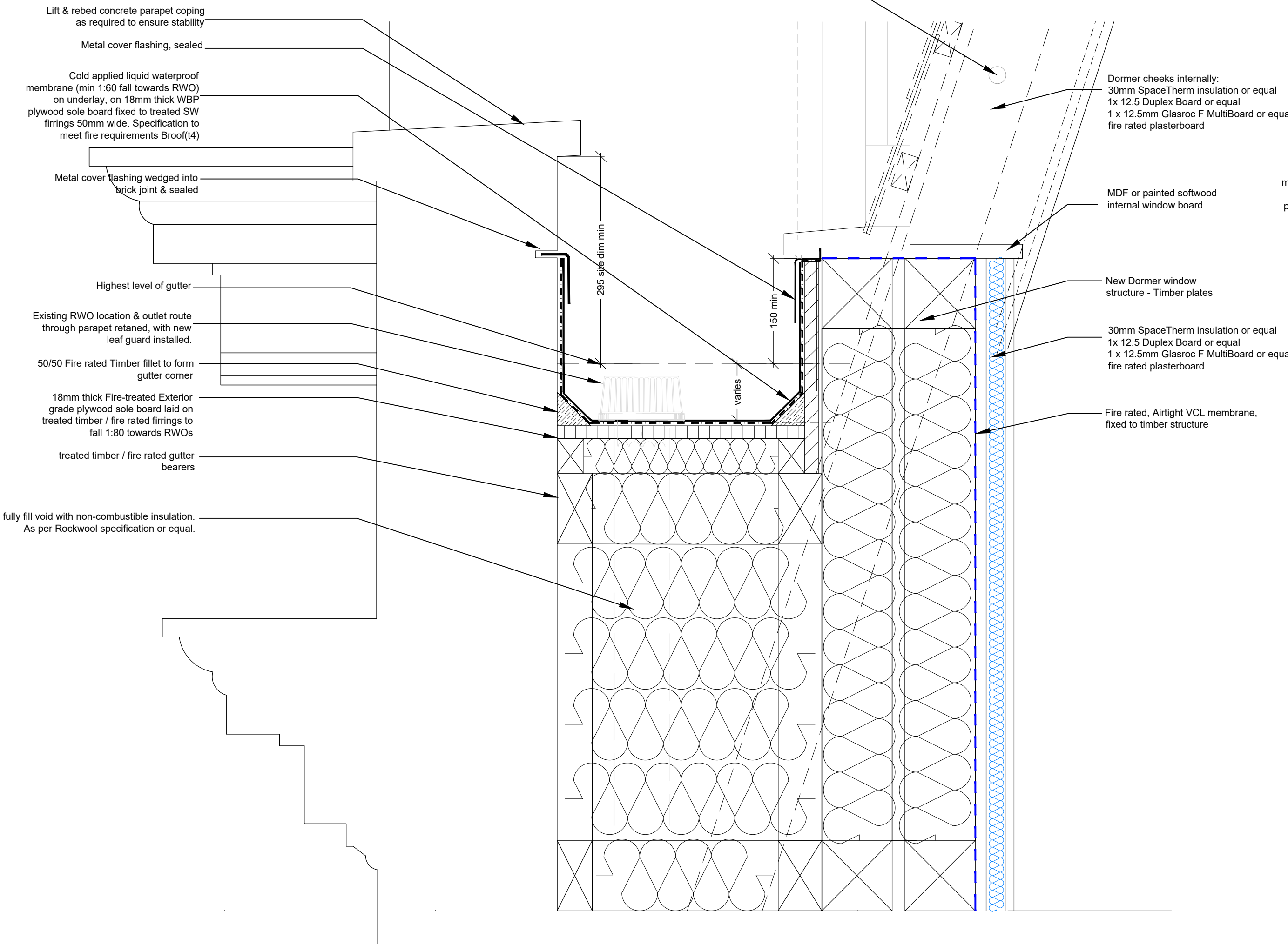
Studio Moren Ltd will coordinate with all other consultants in relation to statutory items / elements under that consultants control. These items may be shown on Studio Moren Ltd drawings for coordination purposes, however they remain under that consultants design and control.

NOTES

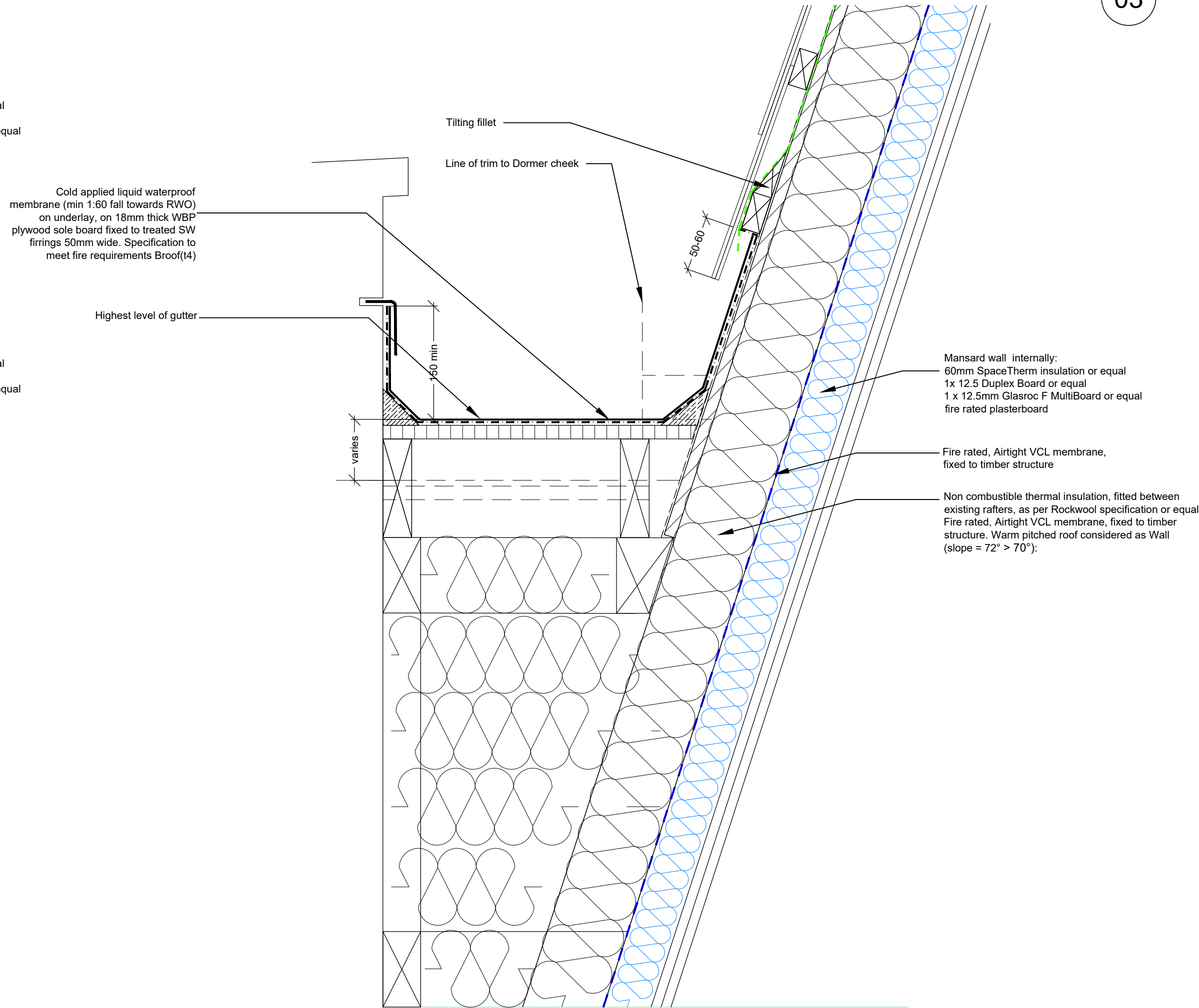
- Leadwork, weathering, flashing & separating membrane to specialist detail
- To comply with Lead Association requirements & specifications
- New Roof Structure to Dormers & any strengthening works to existing roof timbers to Structural Engineers details



03 Mansard Roof Transition
1:5 @ A1



01 Dormer Window & Parapet Gutter
1:5 @ A1



02 Parapet Gutter
1:5 @ A1