

Top of Lift \sphericalangle 46.17m
Roof Level
 45.240m

Seventh Floor Level
Level \sphericalangle 42.18m (Grillage)
 \sphericalangle 41.73m (external)
 \sphericalangle 41.67m (internal)

Sixth Floor Level
 38.46m

Fifth Floor Level
 35.25m

Fourth Floor Level
 32.05m

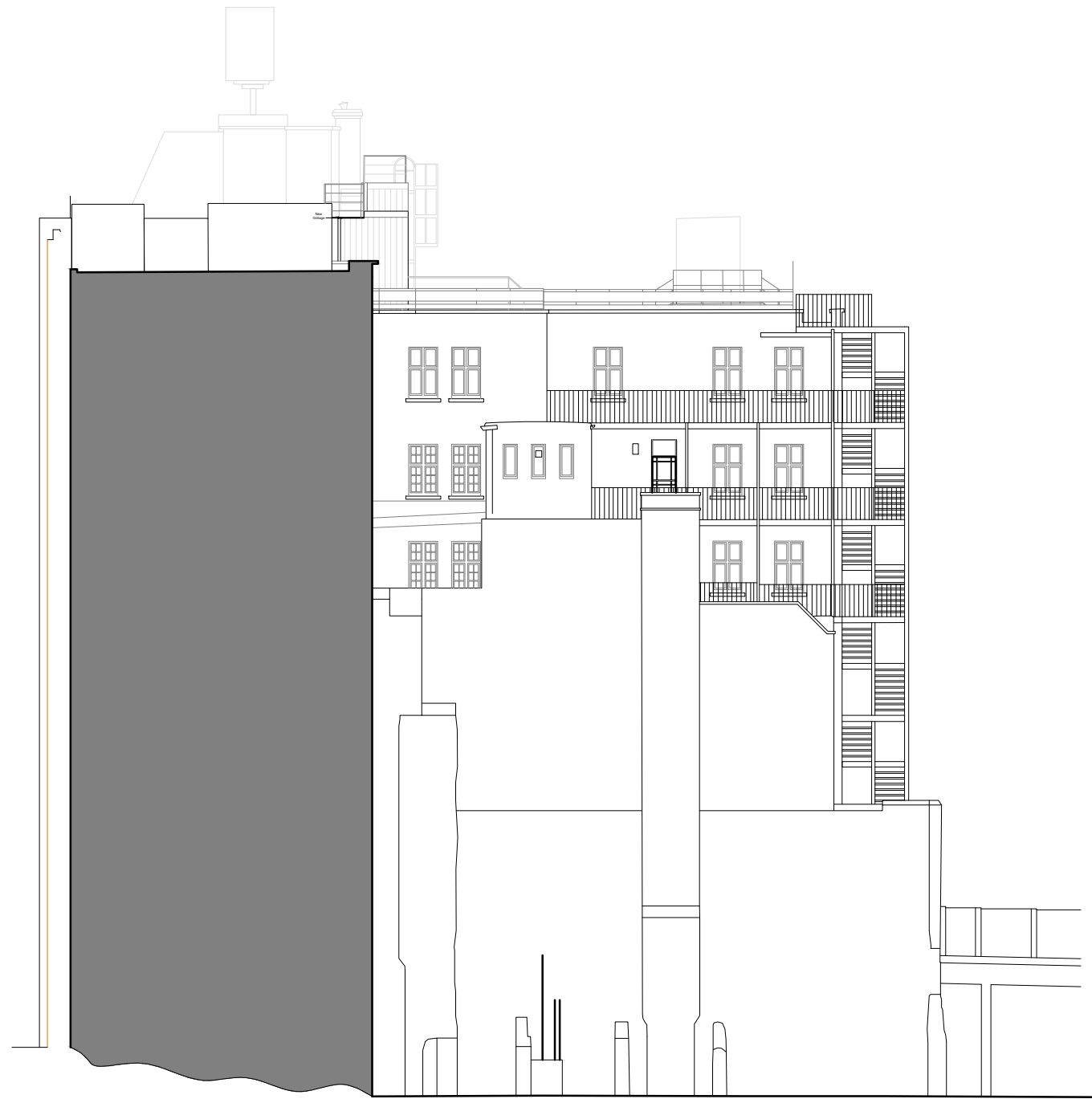
Third Floor Level
 28.85m

Second Floor Level
 25.64m

First Floor Level
 22.45m

Ground Floor Level
 19.29m

Basement Level
 15.72m
 15.00m



Datum 15.00m

Proposed Sectional-Elevation DD

DATE	STATUS	REVISION	DESCRIPTION
10.09.2024	S2	PL01	PLANNING



Do not scale from this drawing.
 All dimensions to be confirmed on site.
 Information contained within this drawing is the sole copyright of EMRYS Architects Ltd and is not to be reproduced without permission.
 EMRYS Architects are to be notified immediately of any discrepancies.

EMRYS
 CAP House | 9-12 Long Lane | London | EC1A 9HA
 mail@emrysarchitects.com
 www.emrysarchitects.com T : 020 7726 5060

JOB NO	2413	CLIENT	Pearl and Coutts
TITLE	New House, 67-68 Hatton Garden Clerkenwell, London, EC1N 8JY		
DWG	04 GA Sections Sectional-Elevation DD		
DRAWN	JP	CHECKED	GE
DATE	10.09.2024	SCALE	1/200
STATUS DESCRIPTION	PLANNING	STATUS CODE	S2
REVISION		REVISION	PL01
DRAWING NUMBER	2413-EMR-ZZ-ZZ-AP-A-04102		