



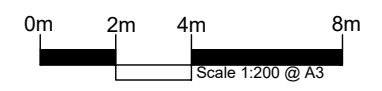
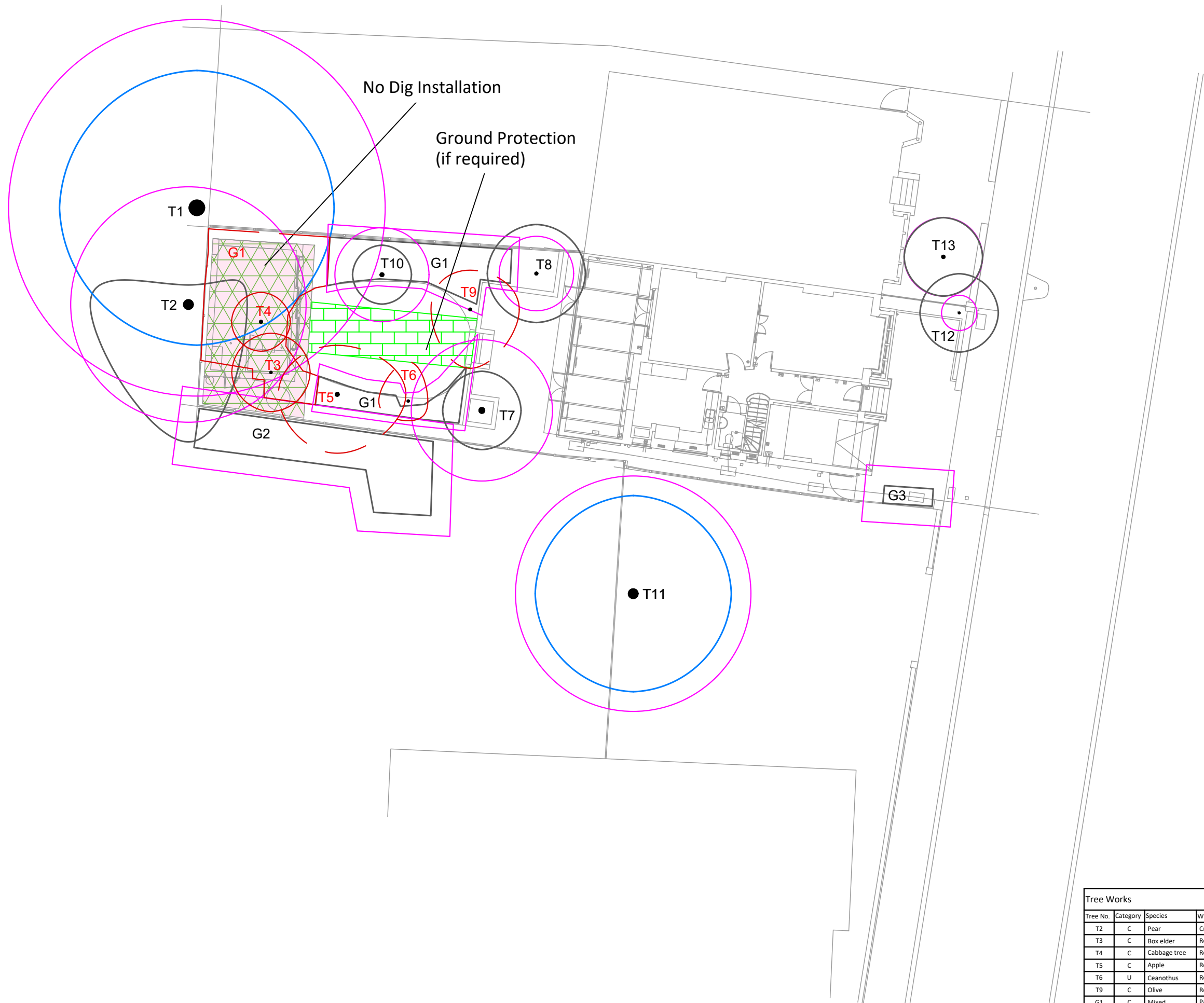
Notes:

The original of this drawing was produced in colour - a monochrome copy should not be relied upon.

Do not scale from this drawing.

Tree locations were plotted from the existing site plan.

No trees on this site are protected under TPO, but the site is located within a Conservation Area.
 It is therefore necessary to inform the Local Authority before conducting works to trees on this site. Full planning permission supersedes this protection in relation to the development. Subsequent works would require permission in the usual manner.



MWA Key

● T1
 ○ T2
 ○ T3
 ○ T4
 ○ T5
 ○ T6
 ○ T7
 ○ T8
 ○ T9
 ○ T10
 ○ T11
 ○ T12
 ○ T13
 ○ T14
 ○ T15
 ○ T16
 ○ T17
 ○ T18
 ○ T19
 ○ T20
 ○ T21
 ○ T22
 ○ T23
 ○ T24
 ○ T25
 ○ T26
 ○ T27
 ○ T28
 ○ T29
 ○ T30
 ○ T31
 ○ T32
 ○ T33
 ○ T34
 ○ T35
 ○ T36
 ○ T37
 ○ T38
 ○ T39
 ○ T40
 ○ T41
 ○ T42
 ○ T43
 ○ T44
 ○ T45
 ○ T46
 ○ T47
 ○ T48
 ○ T49
 ○ T50
 ○ T51
 ○ T52
 ○ T53
 ○ T54
 ○ T55
 ○ T56
 ○ T57
 ○ T58
 ○ T59
 ○ T60
 ○ T61
 ○ T62
 ○ T63
 ○ T64
 ○ T65
 ○ T66
 ○ T67
 ○ T68
 ○ T69
 ○ T70
 ○ T71
 ○ T72
 ○ T73
 ○ T74
 ○ T75
 ○ T76
 ○ T77
 ○ T78
 ○ T79
 ○ T80
 ○ T81
 ○ T82
 ○ T83
 ○ T84
 ○ T85
 ○ T86
 ○ T87
 ○ T88
 ○ T89
 ○ T90
 ○ T91
 ○ T92
 ○ T93
 ○ T94
 ○ T95
 ○ T96
 ○ T97
 ○ T98
 ○ T99
 ○ T100

[Green Grid] No Dig Installation
 [Pink Grid] Ground Protection
 [Pink Box] Proposed Builds

Tree Works

Tree No.	Category	Species	Works and reason for works
T2	C	Pear	Crown lift E side to 5m over site.
T3	C	Box elder	Remove as below footprint
T4	C	Cabbage tree	Remove as below footprint
T5	C	Apple	Remove due to proximity of development
T6	U	Ceanothus	Remove under sound management
T9	C	Olive	Remove for access
G1	C	Mixed	Partial removal as below footprint

Tree Categories

Trees have been assigned a category in accordance with Table 1 of BS 5837:2012 'Trees in Relation to Design, Demolition and Construction'. The category is shown by the colour of the canopy edge (and canopy hatch where present).

Categories are shown as below:

- Category 'A' - Tree of high quality and value - **Green**
- Category 'B' - Tree of moderate quality and value - **Blue**
- Category 'C' - Tree of low quality and value - **Grey**
- Category 'U' - Tree of significantly reduced potential - **Dark Red**