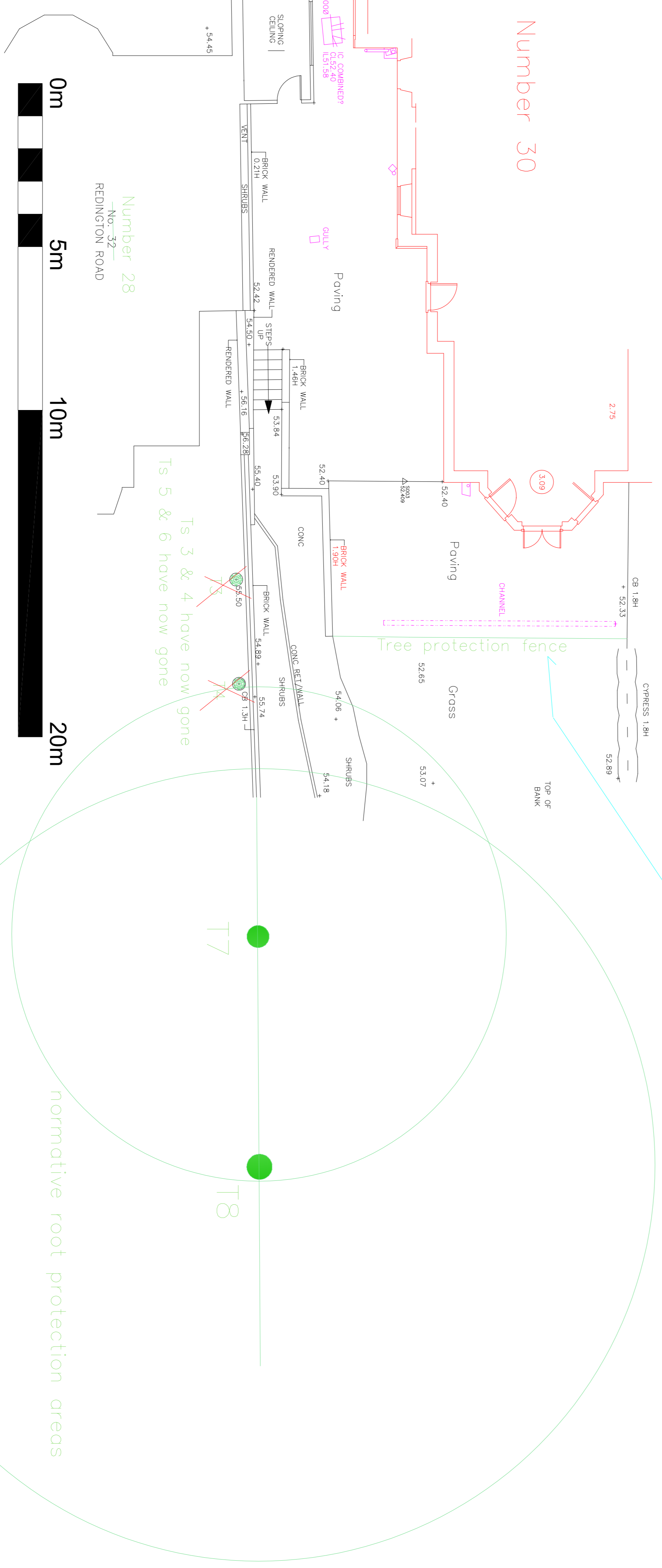
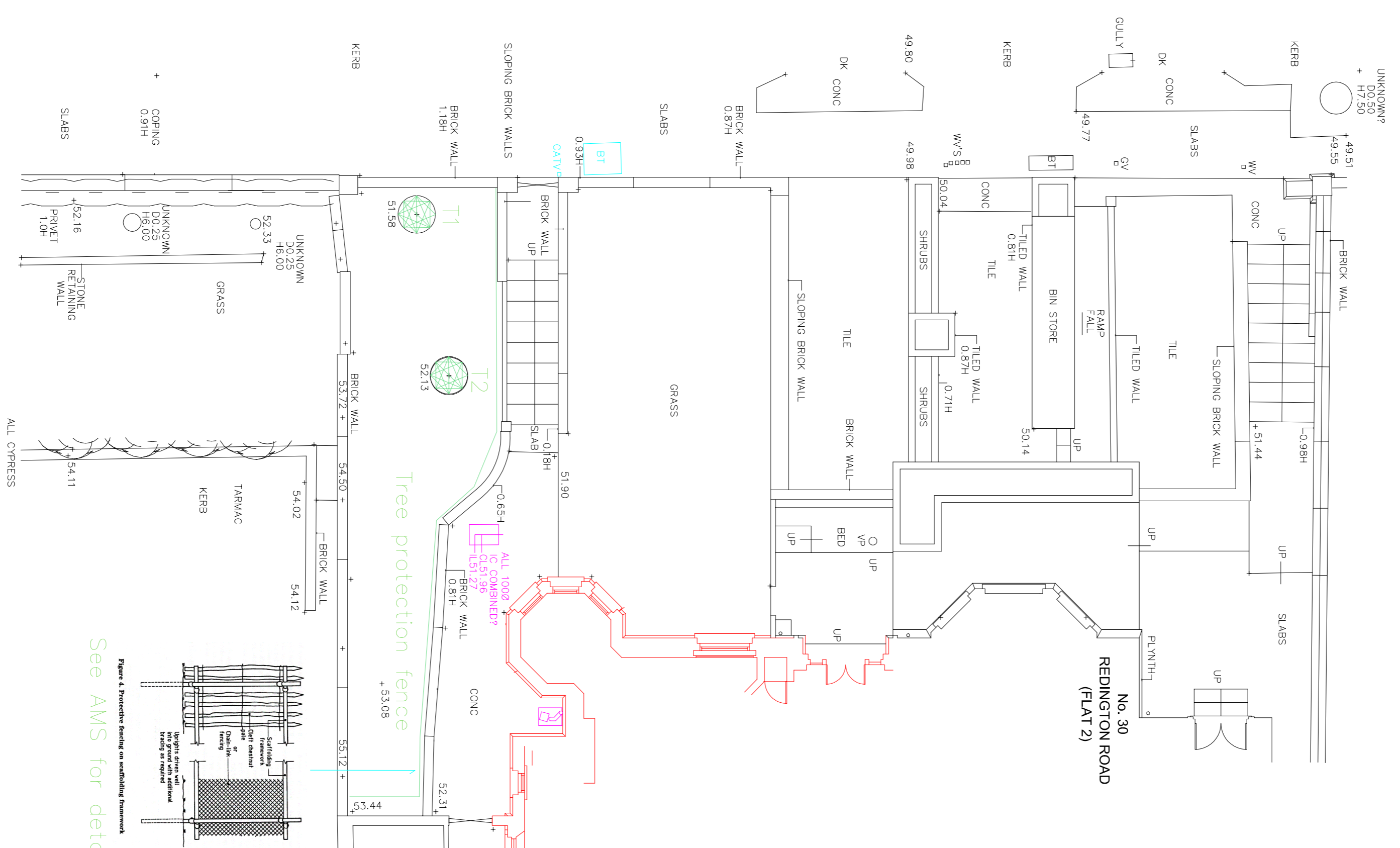
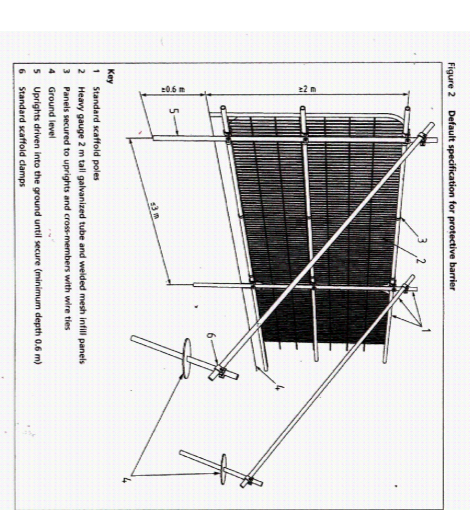
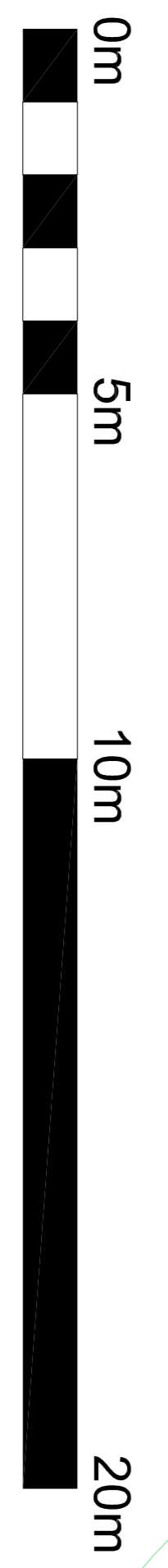
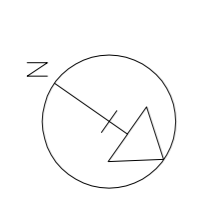


No	Common name of tree	Height estimated in metres	Stem Diameter in mm at 1.5 metres from base	Branch spread towards compass points estimated in metres	Height of crown clearance.	Comments
1	London Plane	16	750 (660) 720 (570)	N 2 E 8 S 8 W 6	2 over path	The tree has pushed out the boundary wall. Small cavity on southern stem at base. Estimated remaining contribution 40 years. Category B as per table 1 of the BS
2	Sycamore	14	460 (420) 350 (300) 420 (390)	N 5 E 6 S 2 W 6	2 over path	Former pollard Typical basal stem junctions Category C
3	Beeches					
4	now gone					
5	Beech in garden of no.28	18	C 600 (630)	N 5 E 5 S 2 W 6	3	40 years Category B.
6	Beech in garden of no.28	18	900 (1010)	N 8 E 9 S 9 W 9	5 over garden	Growing out of side wall 20 years category C due to significant lean.
8	Oak on boundary of no.28	18				



30 Redington Road, NW3 7RB. Tree protection plan. TPP. May 2024 dr TP



normative root protection areas

Ts 3 & 4 have now gone

Ts 5 & 6 have now gone

Number 30

Number 28

See AWS for detail

REDINGTON ROAD