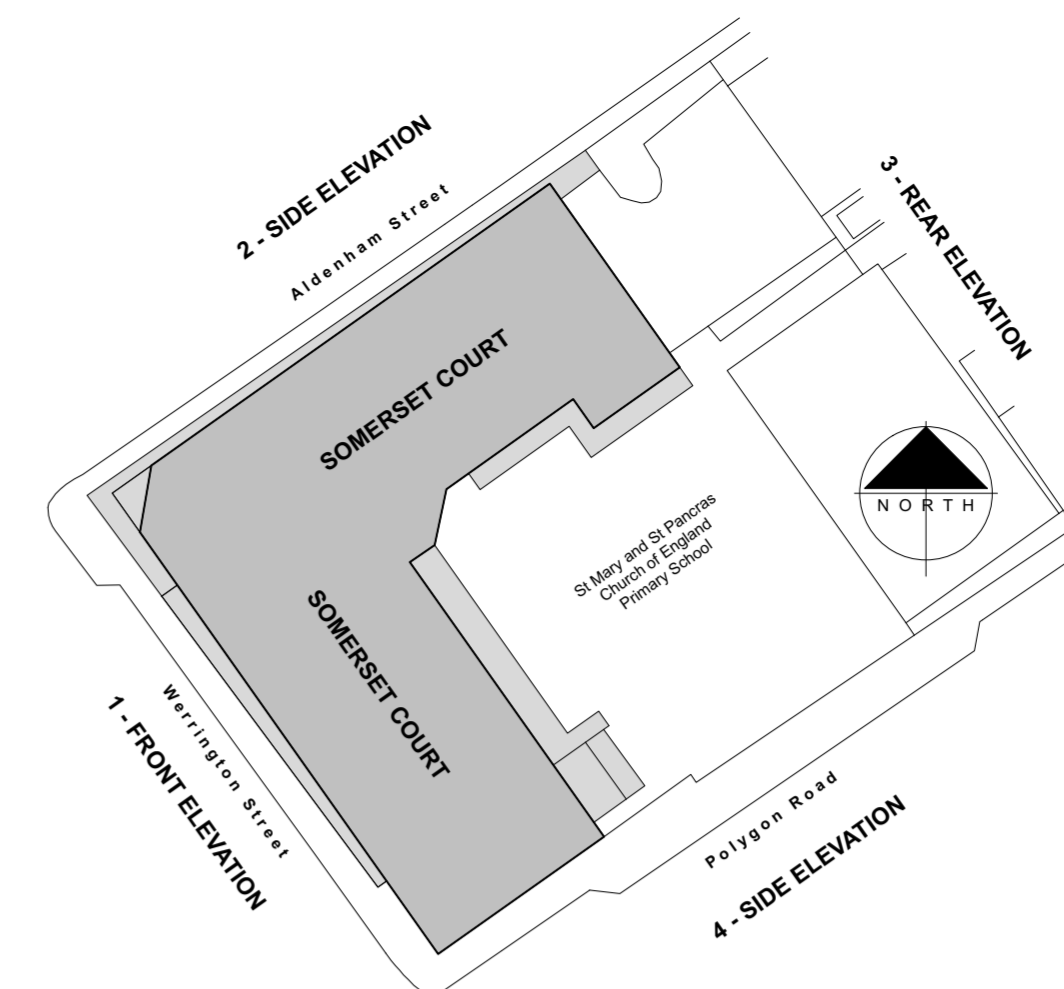


This drawing is the copyright of Axiom Architects. It is for planning application purposes only and may not be reproduced in whole or in part without permission. Drawings lodged for planning approval may be reproduced by the Planning Authority in accordance with the "Copyright (Material Open to Public Inspection) (Marking of Copies of Plans and Drawings) Order 1997" and must carry the relevant copyright restriction note. Scaling from this drawing should only be carried out from a print at the scale and size specified within the title block. Responsibility for ensuring correct size reproduction remains with the reader.

DRAWING FOR ILLUSTRATIVE PURPOSES ONLY. SUBJECT TO SITE MEASUREMENT.

WALL TYPE / MATERIAL REFERENCES :

	WALL TYPE B1. FACE BRICKWORK.
	WALL TYPE B2. SW TIMBER CLADDING.
	WALL TYPE R1. WHITE RENDER.
	WALL TYPE R2. BEIGE RENDER.
	WALL TYPE R3. ORANGE RENDER.
	WALL TYPE P1. ALUMINIUM PANELS.
	WALL TYPE P2. WINDOW/DOOR FRAMES.



KEY PLAN.



ALDENHAM STREET - ELEVATION.



WERRINGTON STREET - ELEVATION.

Rev	Date	Description	By	Chk
-----	------	-------------	----	-----



1 Brooklands Yard Southover High Street Lewes East Sussex BN7 1HU
Tel. 01273 479434 www.axiomarchitects.co.uk

Client

M.CLARKE.

Project

UNITE STUDENTS, SOMERSET COURT,
ALDENHAM STREET,
LONDON, NW1 1AS.

Drawing

EXISTING ELEVATIONS.

Sheet 1 of 2.

Scale	Status	Date	Drawn	Checked
1:100 @ A1	PLANNING	10.6.24	dh	
Drawing No.				Revision

6235-P100