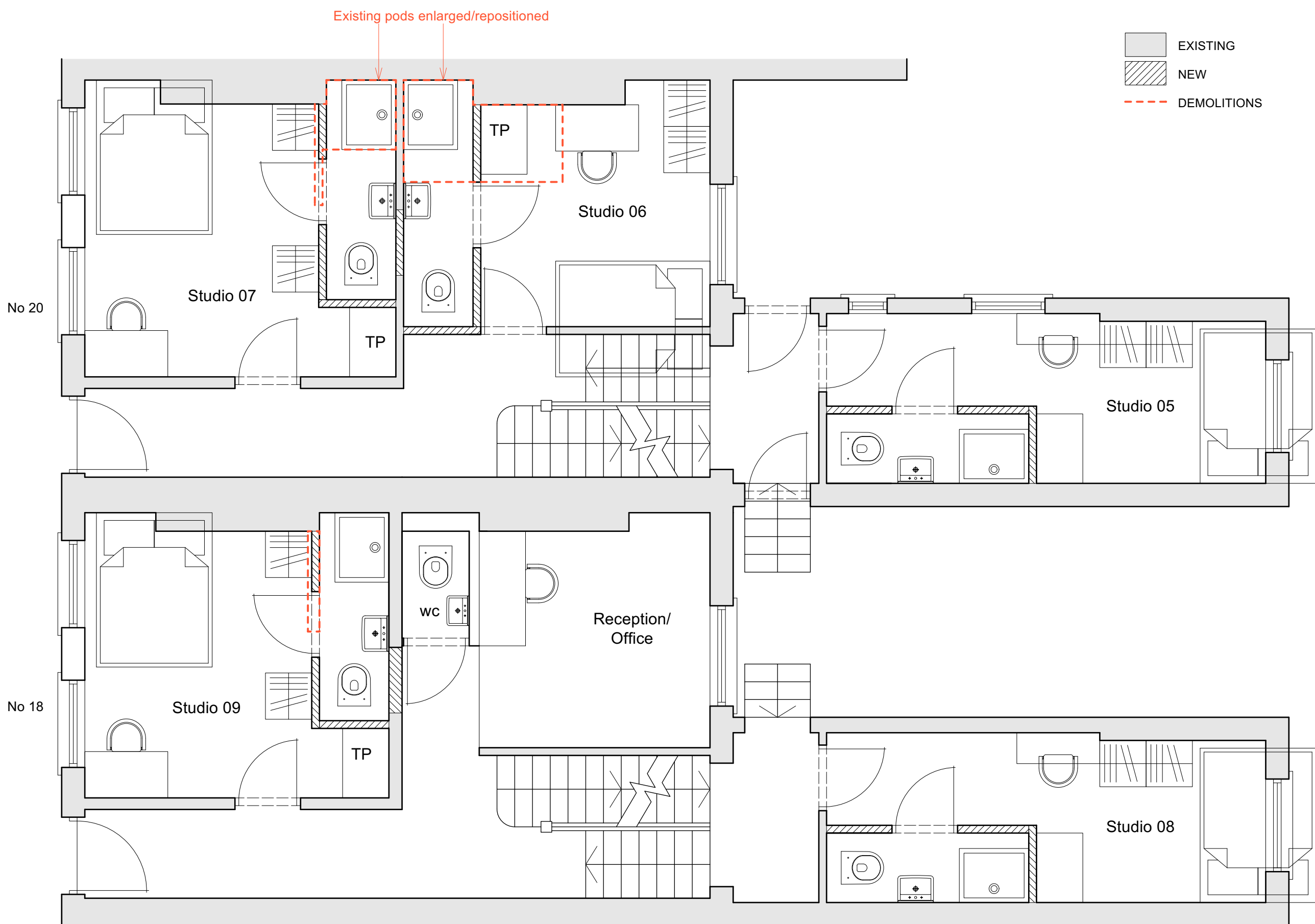
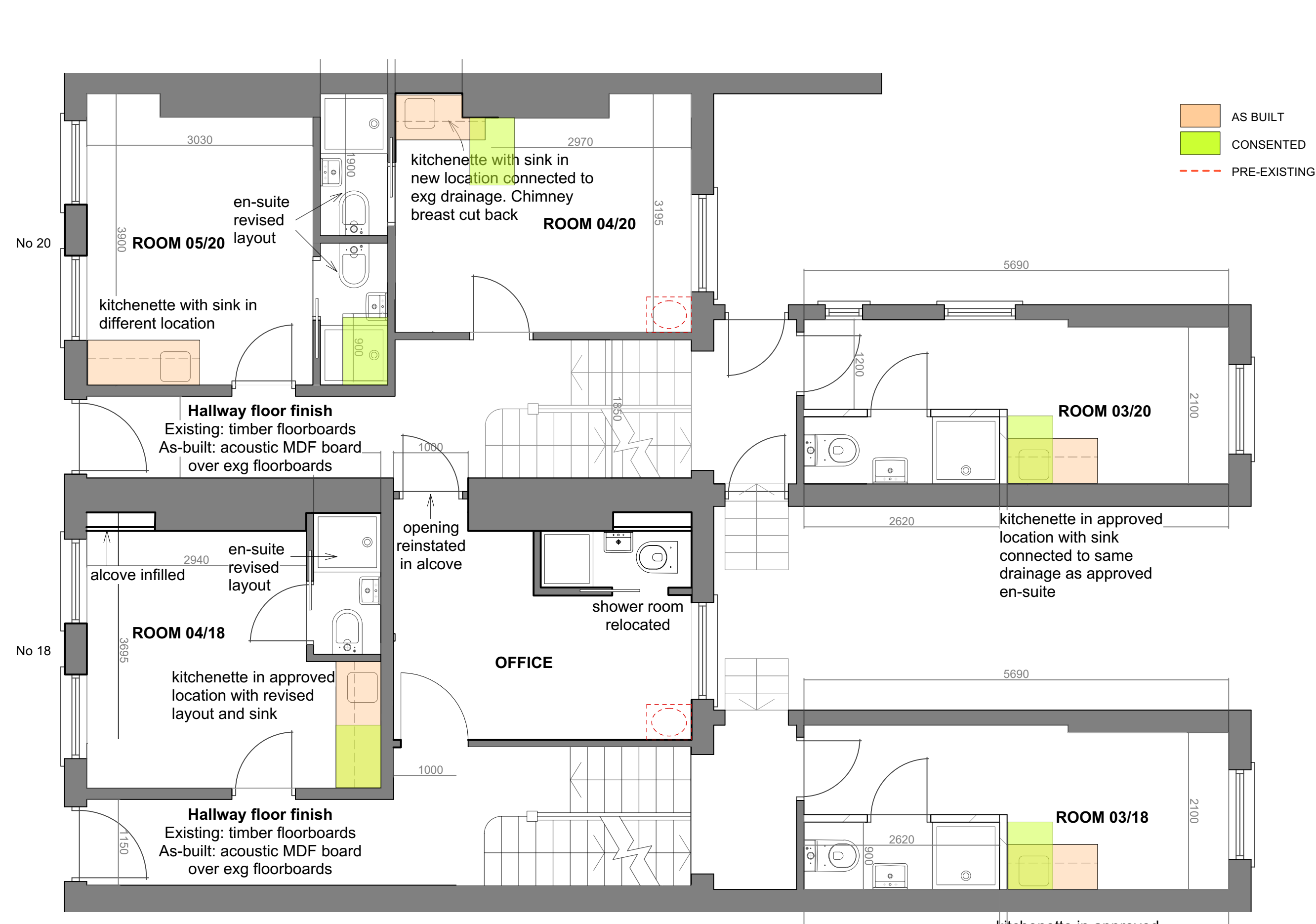


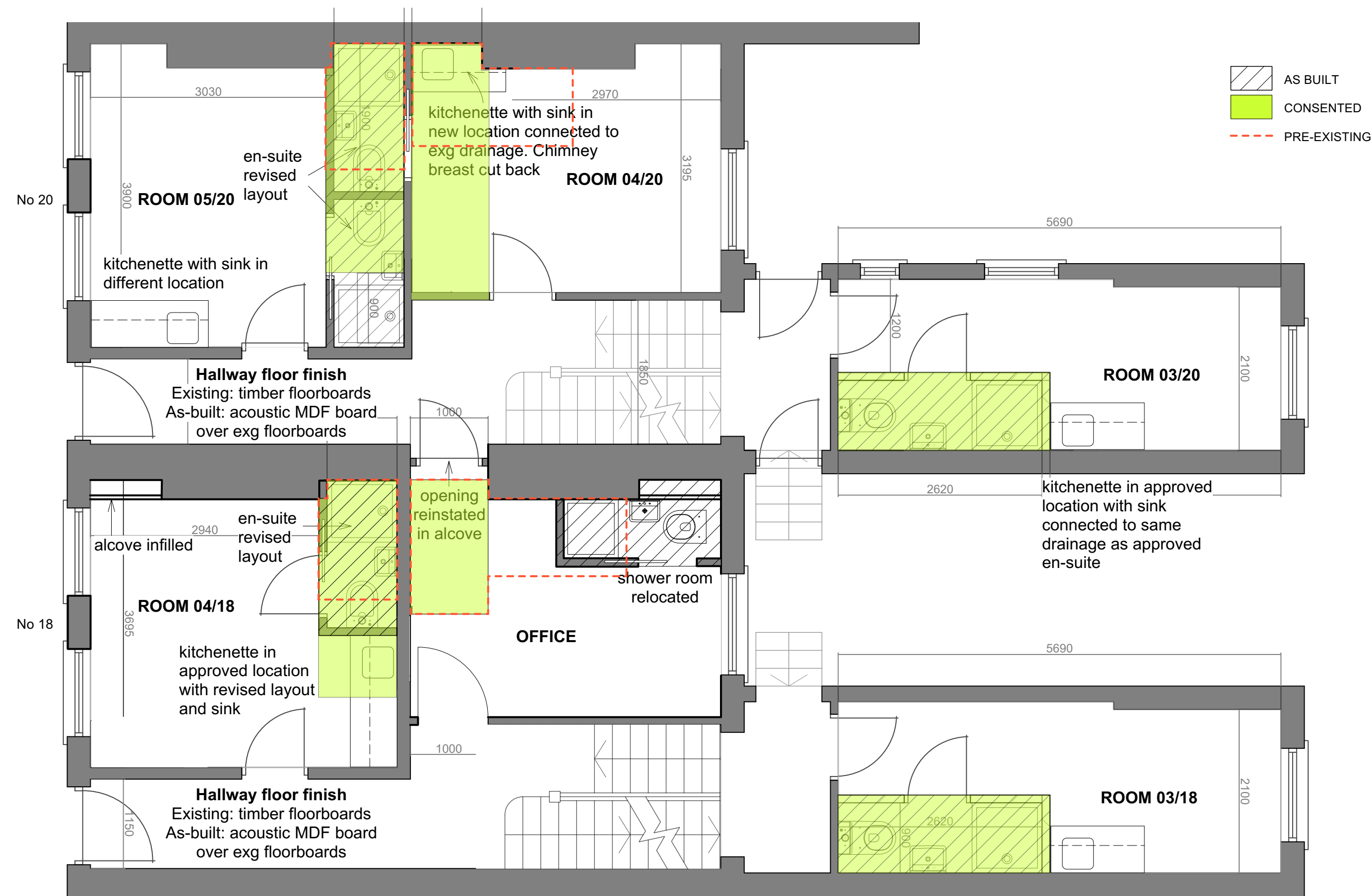
1 Pre-2023 Ground Floor Plan
(02)21 Scale: 1:50



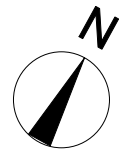
2 Approved 2023/0285/L Ground Floor Plan
(02)21 Scale: 1:50



3 As-Built Ground Floor - Tea Points
(02)21 Scale: 1:50



4 As-Built Ground Floor - En-suite
(02)21 Scale: 1:50



Notes		
B	Annotations updated	08/05/2024
A	Annotations updated	03/05/2024
Revisions		
Kaleley House 18-20 Royal College Street NW1		
Comparative plans - Ground Floor		
ROGER MEARS ARCHITECTS LLP Union Chapel, Compton Avenue London N1 2XD		
rma@rmears.co.uk tel 020 7359 8222 www.rmears.co.uk © Roger Mears Architects LLP		
Date Sep 2024	Scale 1:50@A1	Rev
Job No. 2245	Dwg No.	(02)21 B

