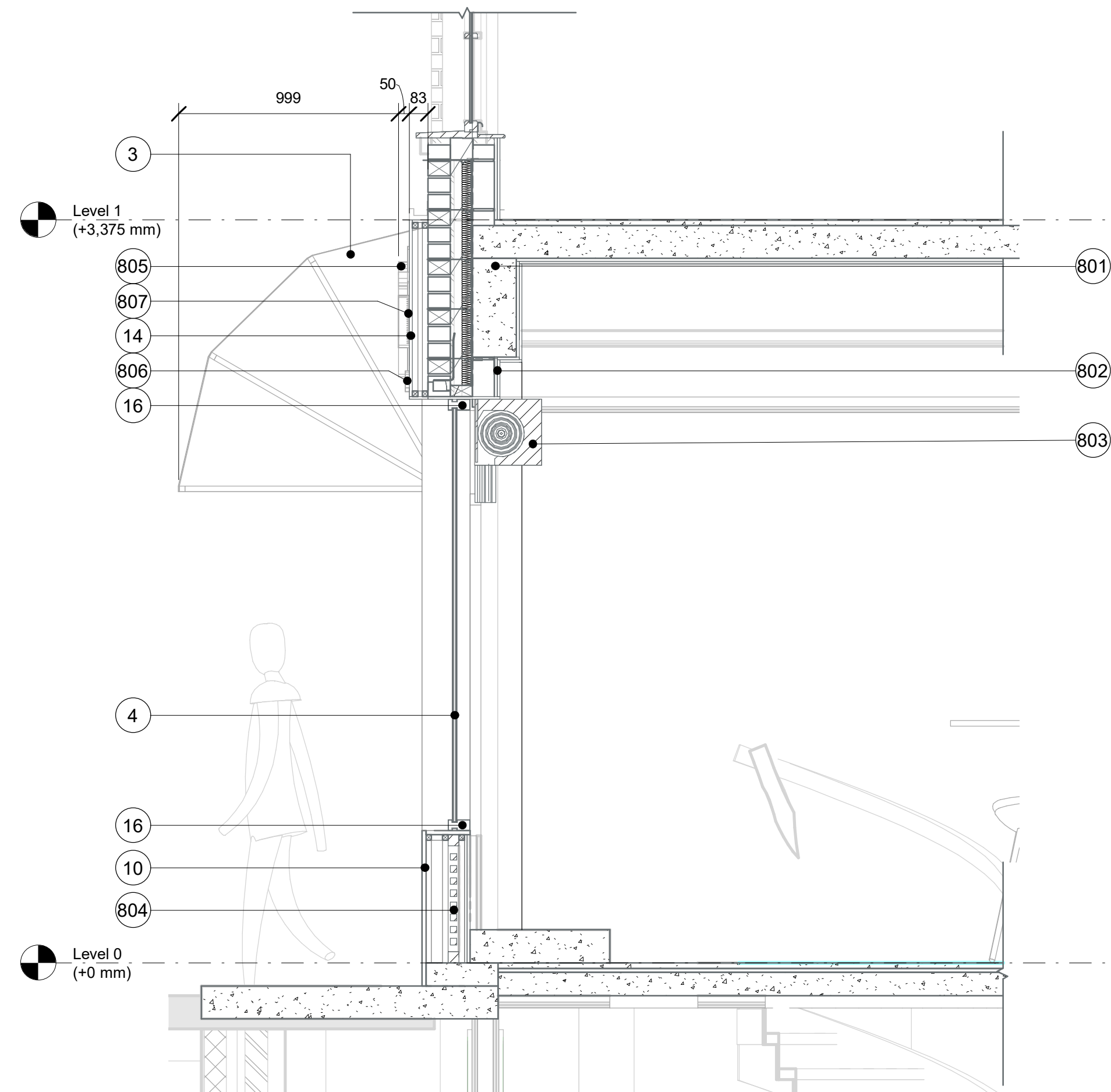
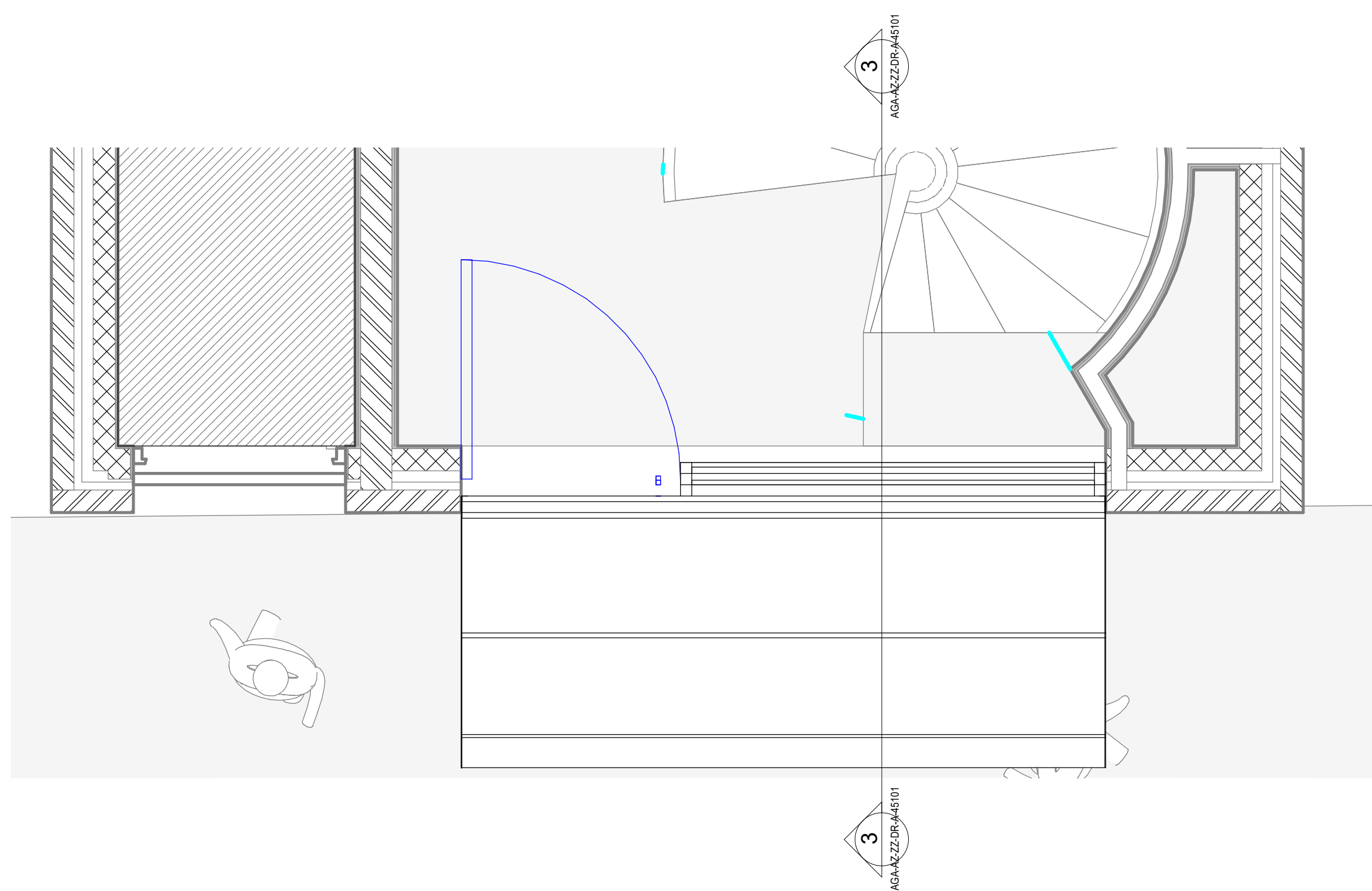




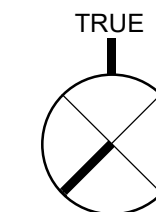
2 45201-North Elevation Proposed
SCALE: 1 : 20



3 45301-Section 01 Proposed
SCALE: 1 : 20



4 45401-External Bay Study
SCALE:



NOTES
1 The Contractor must check and confirm all dimensions
2 All discrepancies must be reported and resolved by the Architect before works commence
3 All work and materials to be in accordance with current applicable Statutory Legislation and to comply with all relevant Codes of Practice and British Standards

EXTERNAL FINISHES

- 1 Yellow Buff Brick
- 2 Black Painted Brick Wall
- 3 Oyster white Metal Retractable Quarter Round Awning (RAL 1013)
- 4 Clear Double Glazing
- 5 White Timber Frame Window
- 6 Grey Lead Flashing
- 7 White Timber Door
- 8 White Timber Frame Door
- 9 Black Timber Door
- 10 Patina green Timber Panel (RAL Colour 6000)
- 11 Patina green Timber Partial Door with Clear Double Glazing
- 12 Artificial Exterior Wall Vegetation
- 13 Matt Black Square Bar Door Pull Handle
- 14 Patina green Signage Board
- 15 Blue Signage Board with White and Yellow Letter
- 16 Patina green Timber Frame Window
- 17 Blue Projecting Sign

- 500 Ventilation System
- 501 Mechanical Duct
- 502 Air Intake Outtake High vents
- 503 Kitchen Vinyl Floor
- 504 Stainless Steel Kitchen Work-Top
- 505 240L Food Waste Bin
- 506 240L General Waste Bin
- 507 Air Conditioning unit

- Hot Water Vertical Routes
- Cold Water Vertical Routes
- External Waste Water Connection

- Hot Water Horizontal Underfloor Routes
- Cold Water Horizontal Underfloor Routes
- Grey Water Waste Horizontal Underfloor Routes

EXTERNAL FINISHES

- 801 Structural Consideration to be applied by Structural Engineer
- 802 12.5 mm Plasterboard
- 803 White Metal Internal Roller Shutters
- 804 Preservation of Existing Timber Panel
- 805 fusion Lettering: 3 dimensional lettering with Opal White acrylic faces, White painted stainless steel returns, Illumination from LEDs mounted inside the panel (Refer to 807).
- 806 31 Betterton Street Lettering: 3 dimensional lettering with Opal White acrylic faces, White painted stainless steel returns.
- 807 LED Strip with 93 cd/m2 Illuminance Levels for Shop front

P02 Issued For Planning 30.08.24
P01 Issued For Planning 02.08.24
Rev Date



Architecture & Interiors
10 Fitzroy Square, Fitzrovia, London, W1T 5HP
T020 8014 8130
www.aga-associates.com

Client
Huong Nguyen

Project
31 Betterton Street, Camden, London, WC2H 9BQ

Drawing
External Bay Study
North Elevation Proposed

RJ Ref Scale (A1) Status Revision
1093 As indicated Planning P02

Drawing Number
1093-AGA-AGA-AZ-ZZ-DR-A-45101

