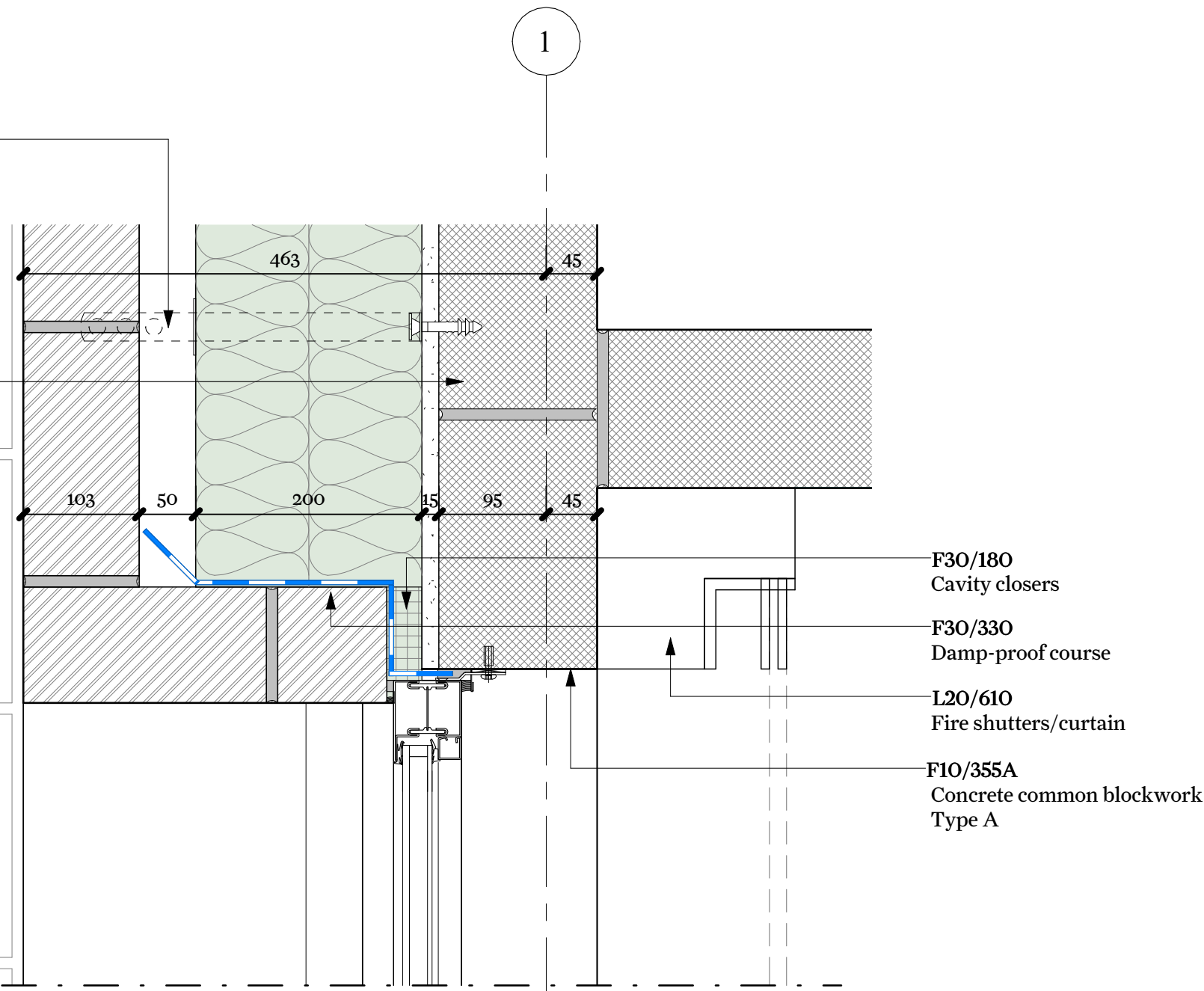


F30/233
Fixing ties in masonry cavity walls
with partial fill cavity insulation

Wall build-up (ext - int):
F10/110A Clay facing Flemish
bond brickwork
50mm Unvented cavity
F10/320 Breather membrane
F30/155 Partial fill cavity
mineral wool insulation
M20/290 Parge coat
F10/355A Concrete common
blockwork Type A
M60/170 Dust sealant coating

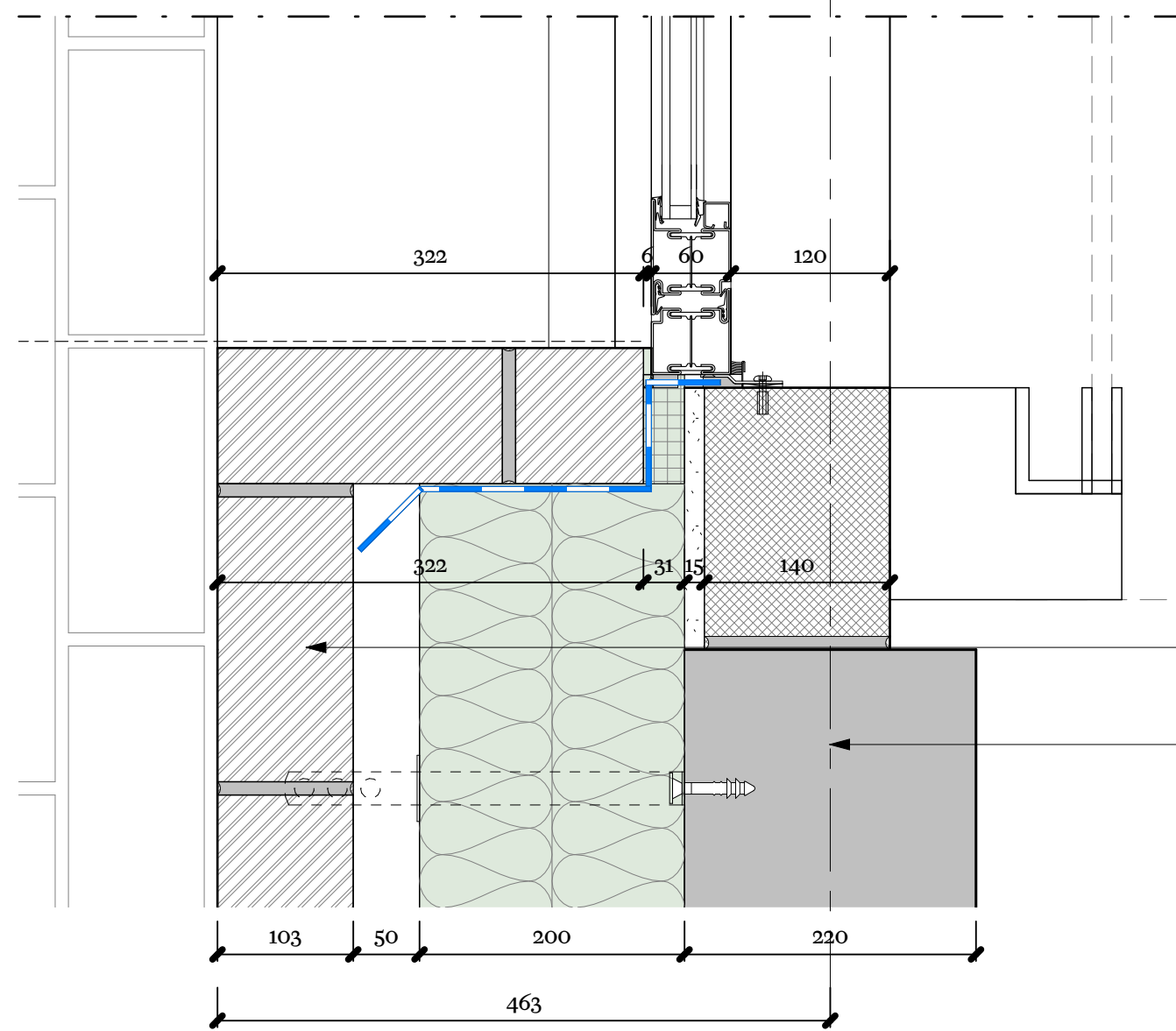
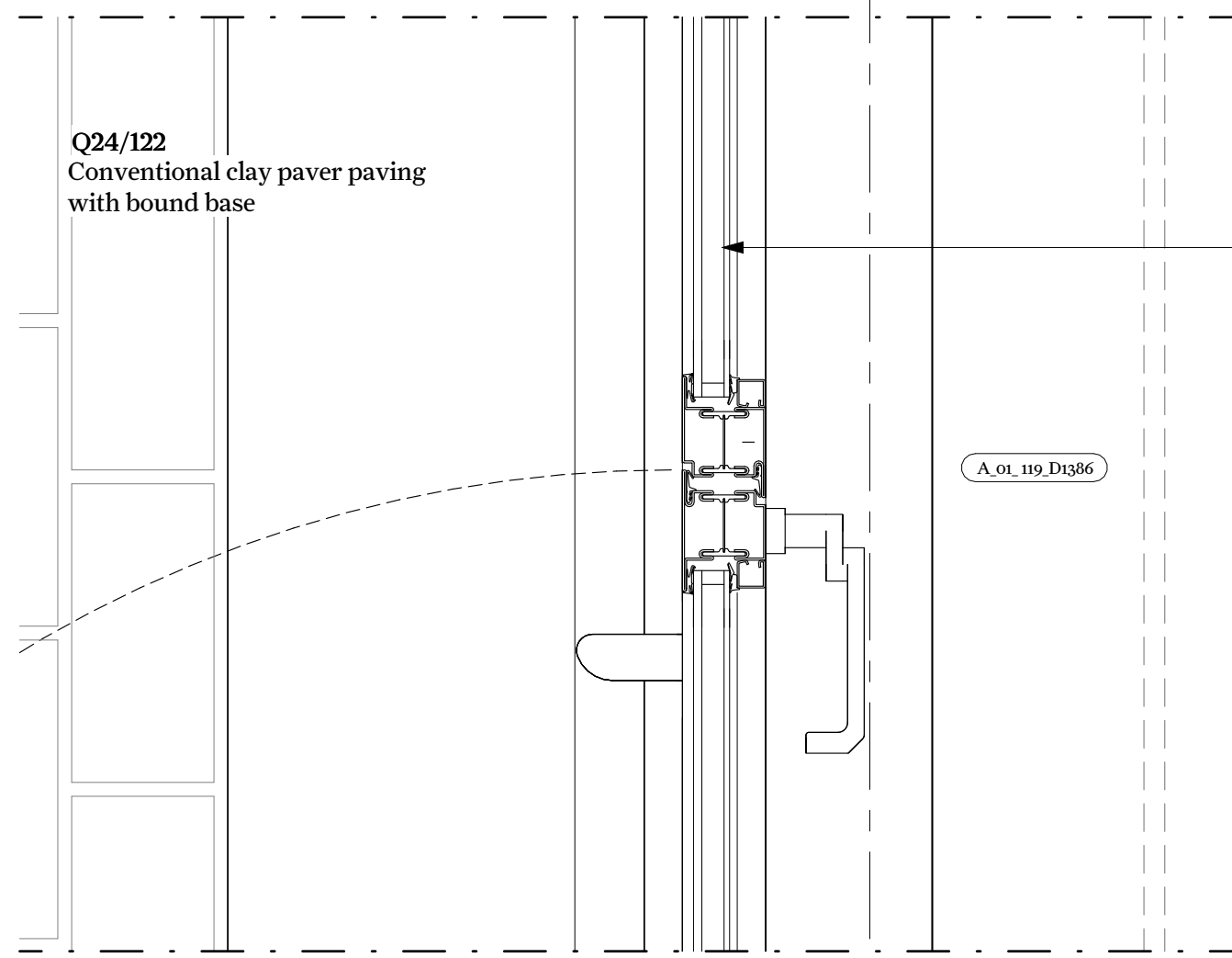


F30/180
Cavity closers
F30/330
Damp-proof course
L20/610
Fire shutters/curtain
F10/355A
Concrete common blockwork
Type A

Q24/122
Conventional clay paver paving
with bound base

L20/480A
Steel double external doorset

A.01.119.D1336



F10/110A
Clay facing Flemish bond
brickwork
REF-STR
Refer to structural engineer's
information

F30/330
Damp-proof course

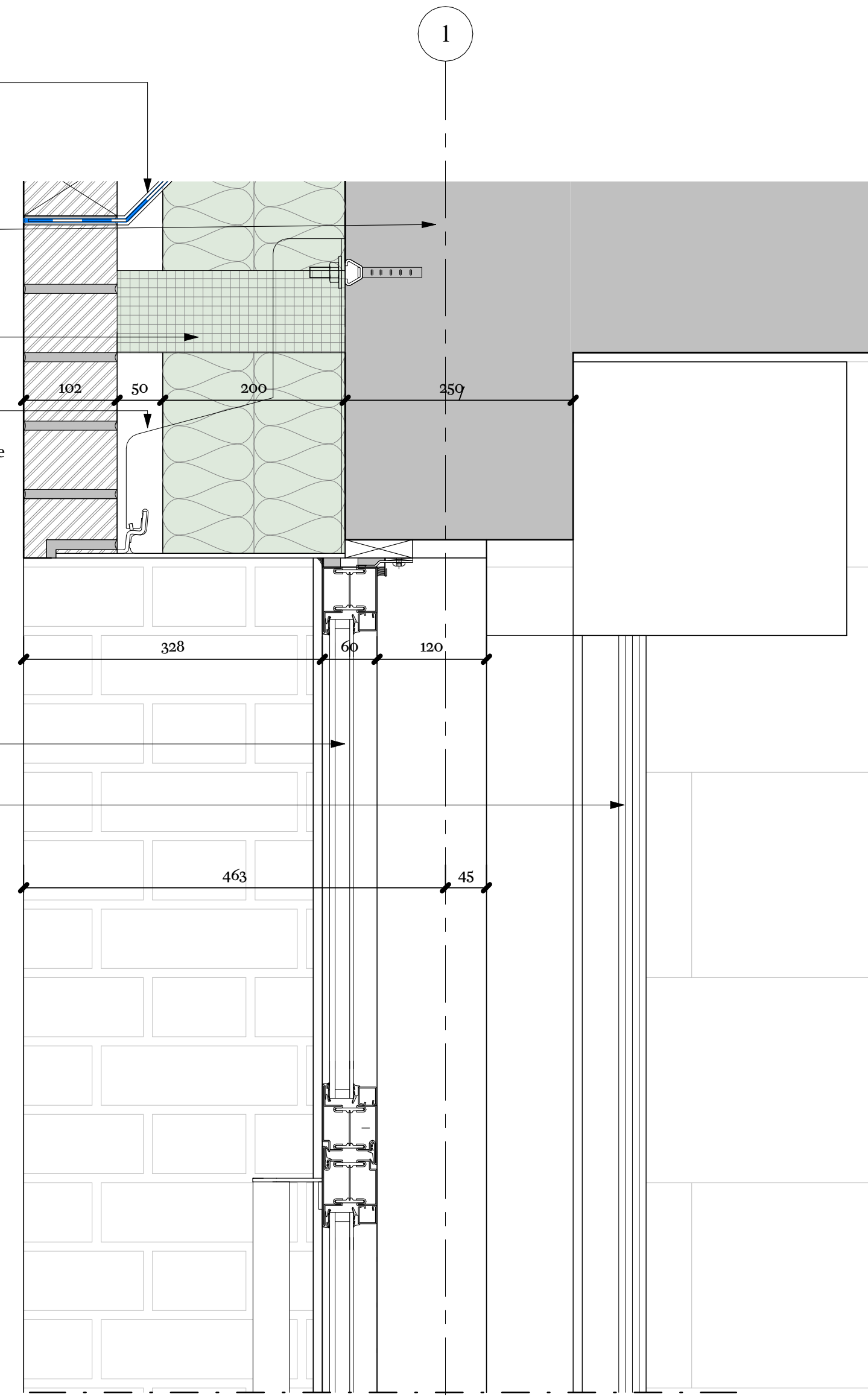
Wall build-up (ext - int):
F10/110B Clay facing Stretcher
bond brickwork
50mm Unvented cavity
F10/320 Breather membrane
F30/155 Partial fill cavity
mineral wool insulation
REF-STR Refer to structural
engineer's information

P10/420
Stone wool firestop

F30/265
Ancon MDC masonry support
system with channels cast into
the edge of concrete, with Ancon
thermal break and bottom plate
above openings

L20/480A
Steel double external doorset

L20/610
Fire shutters/curtain



F30/180
Cavity closers

F31/105
Precast concrete sill

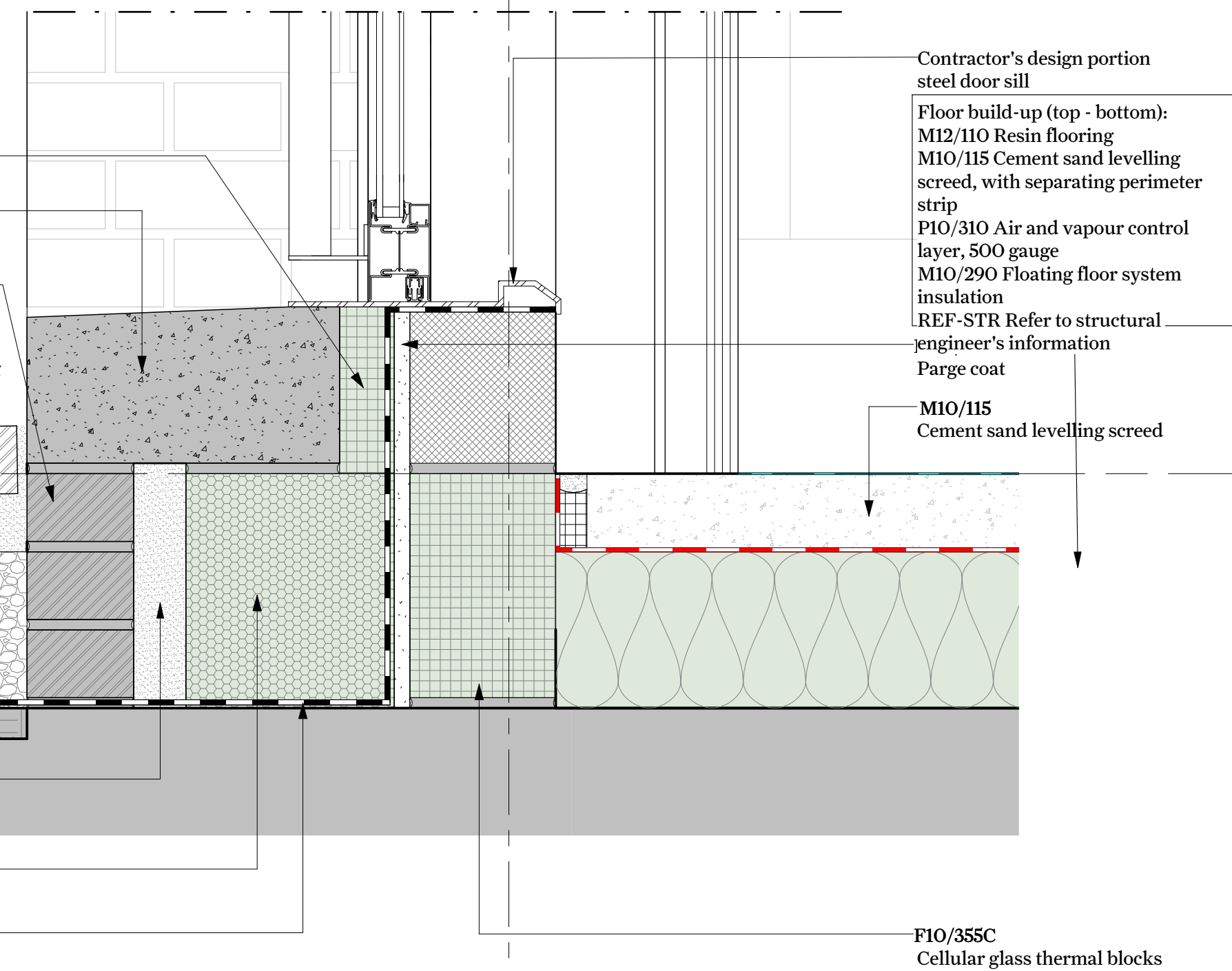
F10/385
Engineering brickwork
Q24/122
Conventional clay paver paving
with bound base

Level 01 GF
FFL 246600

50mm Unvented cavity to
be filled with mortar to
underside of DPC

F30/150
Cellular glass insulation boards

J40/295
Geocomposite studded cavity
drainage/venting membrane



Contractor's design portion
steel door sill

Floor build-up (top - bottom):
M12/110 Resin flooring
M10/115 Cement sand levelling
screed, with separating perimeter
strip
P10/310 Air and vapour control
layer, 500 gauge
M10/290 Floating floor system
insulation
REF-STR Refer to structural
engineer's information
Parge coat
M10/115
Cement sand levelling screed

F10/355C
Cellular glass thermal blocks

Key Plan

This drawing is not to be scaled. Dimensions govern.
Wright & Wright Architects shall be notified in writing of any discrepancies.
All dimensions are in millimeters unless noted otherwise.
This drawing issued at First Contract is indicative of design intent and should be read in
association with all specifications, schedules and consultants information.
The Contractor is required to complete the detailed design, final coordination and
interfaces. Contractor and Sub-Contractors design are subject to Architects acceptance.

CI	Stage 4 Tender	17/11/2023	JB	BM
PI	Stage 04 Draft	18.09.2023	JB	BM
Rev	Note	Date	Issued By	Issued To

Security Classification: **Official**

WRIGHT & WRIGHT ARCHITECTS

89-91 Bayham Street
London NW1 0AG
T +44(0)20 7420 5993
E www.wrightandwright.co.uk

Client
British Museum

Project Name
**Energy Centre
Programme: East
Road Building (ERB)**

Stage
RIBA Stage 4

Drawing Title
External Door - EDW_301

Drawing Number
SW001-WWA-1110-A_XX-DDG -A-5006

Scale Sheet Size Issue Date
1:5 A1 17/11/2023

Revision Status
C1 A4 -Authorised

TYPE: EDW-301
DESCRIPTION: Door plan detail
LOCATION: Level 01 Generator Fuel Delivery

TYPE: EDW-301
DESCRIPTION: Door section detail
LOCATION: Level 01 Generator Fuel Delivery