

**General Notes**

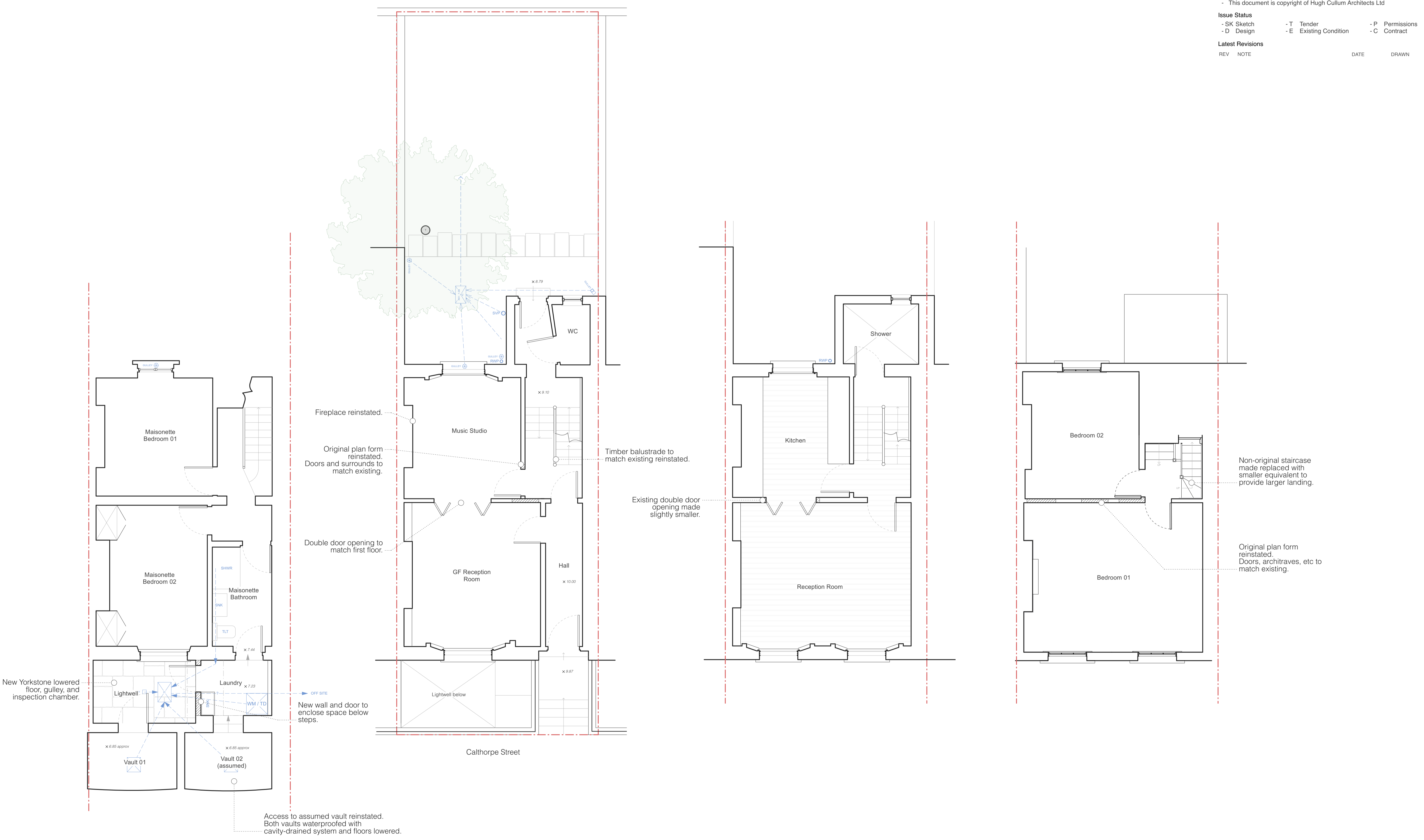
- All dimensions to be verified on site
- To be read in conjunction with all relevant documents
- In the event of discrepancy notify the Architect immediately
- All steel structural elements to be finished with intumescent coating, 30 minutes fire resistance. For all structural elements and connection see SE drawings.
- This document is copyright of Hugh Cullum Architects Ltd

**Issue Status**

- SK Sketch	- T Tender	- P Permissions
- D Design	- E Existing Condition	- C Contract

**Latest Revisions**

REV	NOTE	DATE	DRAWN

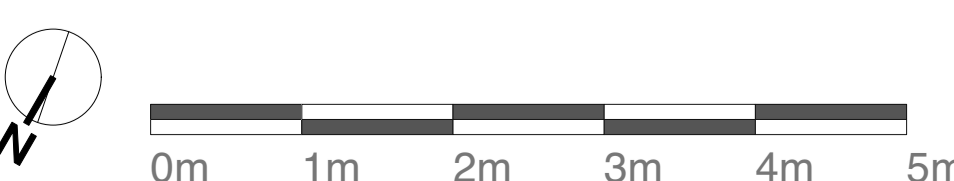


**A LGF Plan**  
Scale: 1:50 @ A1

**B GF Plan**  
Scale: 1:50 @ A1

**C 1F Plan**  
Scale: 1:50 @ A1

**D 2F Plan**  
Scale: 1:50 @ A1



**General Notes**

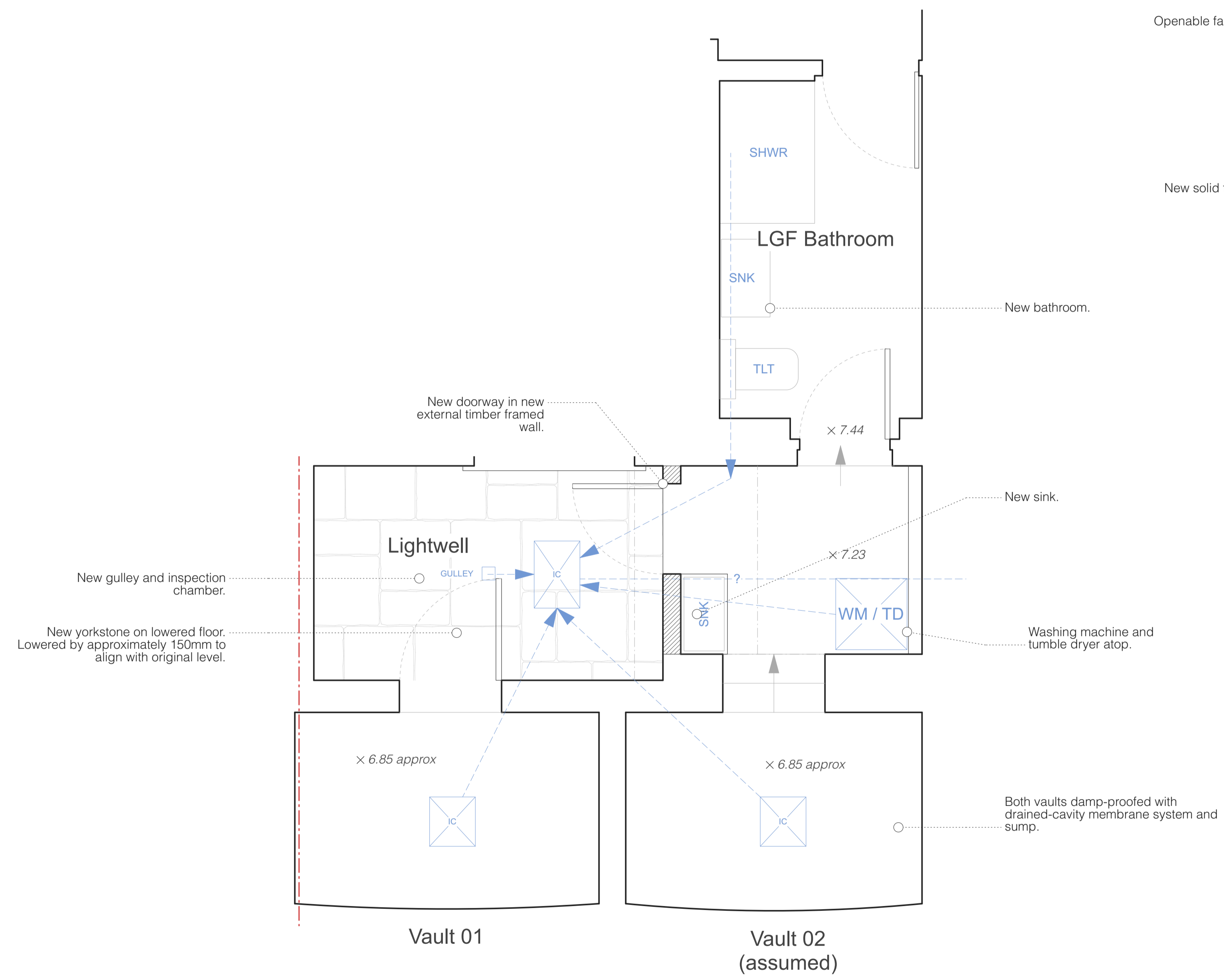
- All dimensions to be verified on site
- To be read in conjunction with all relevant documents
- In the event of discrepancy notify the Architect immediately
- All steel structural elements to be finished with intumescent coating, 30 minutes fire resistance. For all structural elements and connection see SE drawings.
- This document is copyright of Hugh Cullum Architects Ltd

**Issue Status**

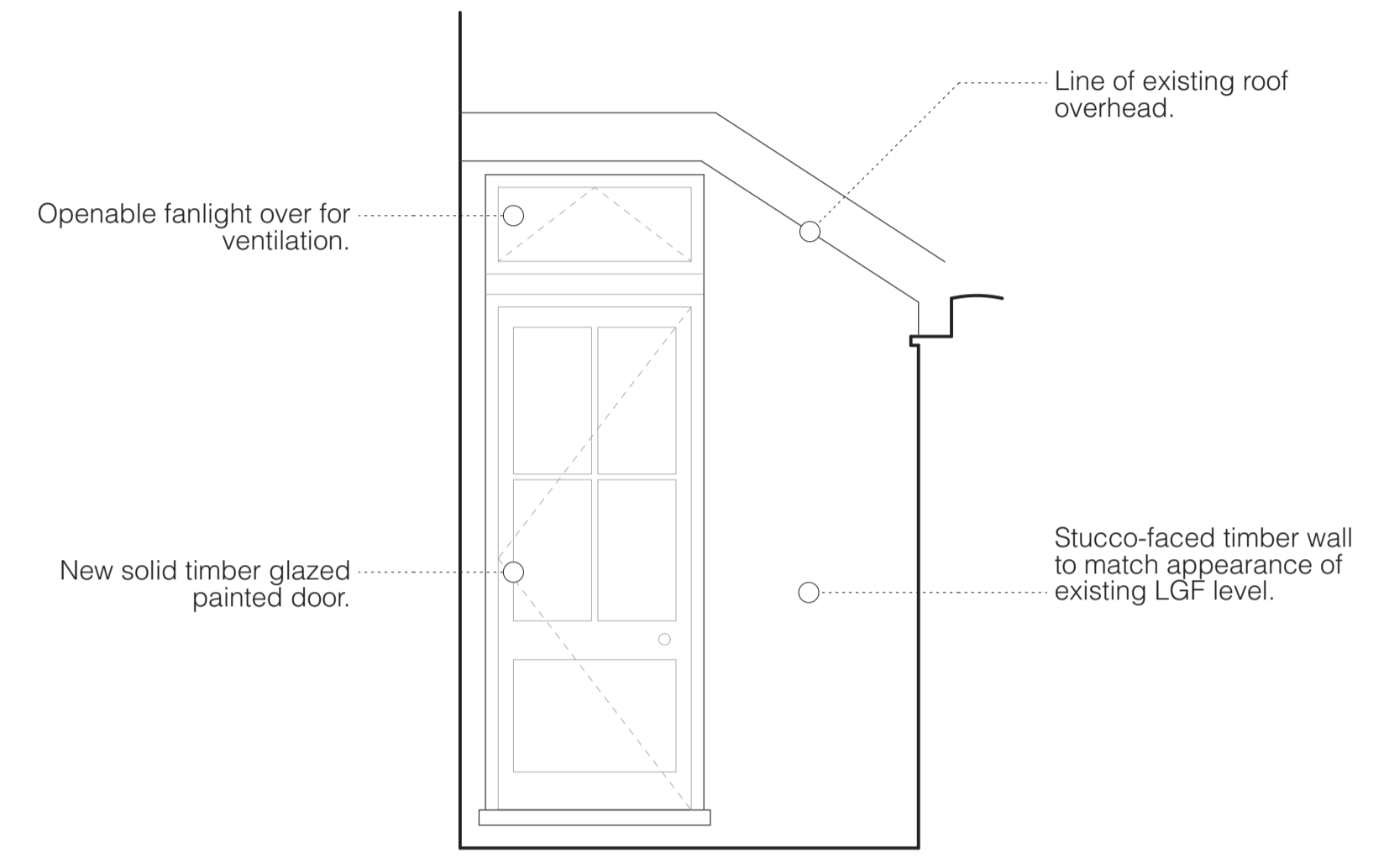
- SK Sketch
- T Tender
- P Permissions
- D Design
- E Existing Condition
- C Contract

**Latest Revisions**

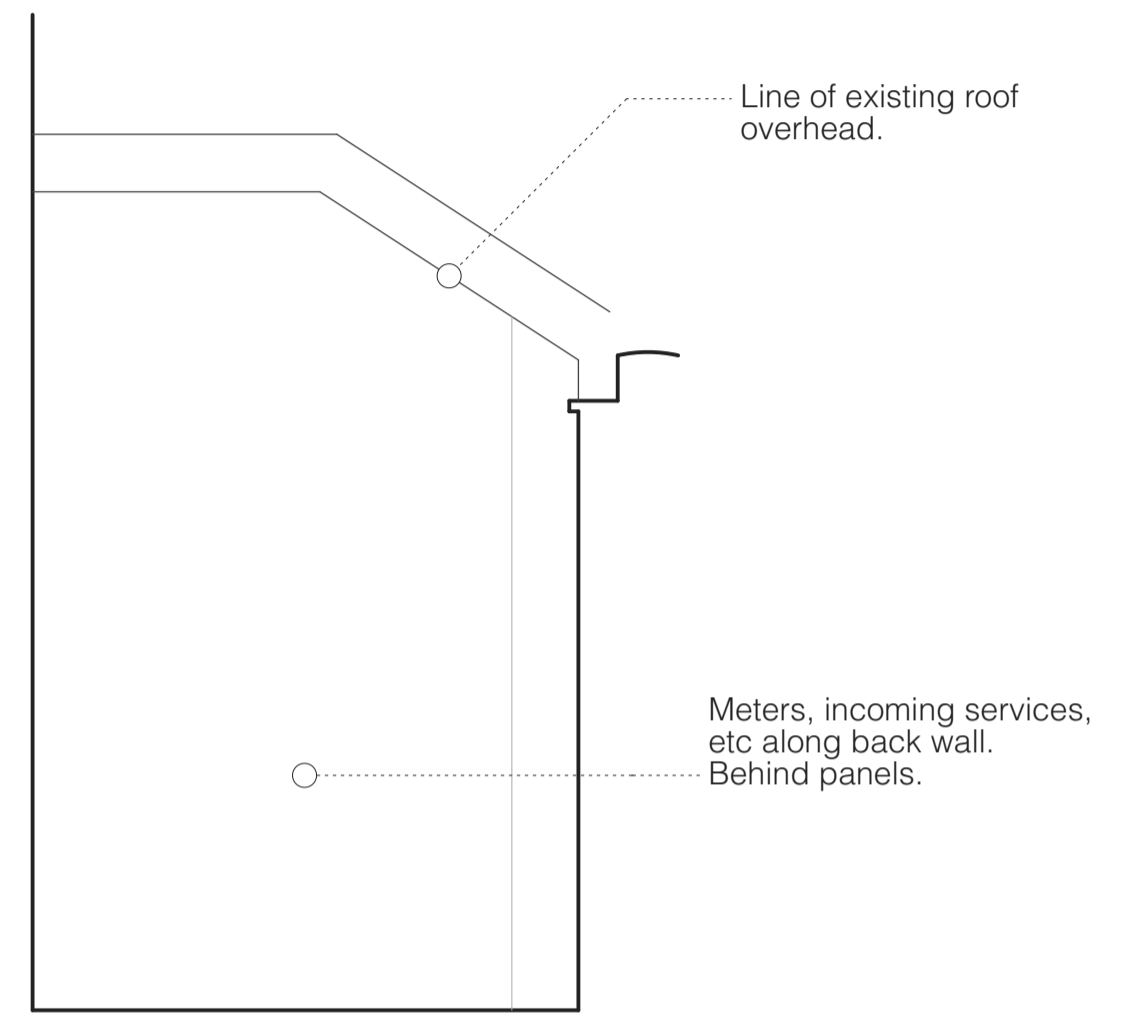
REV	NOTE	DATE	DRAWN



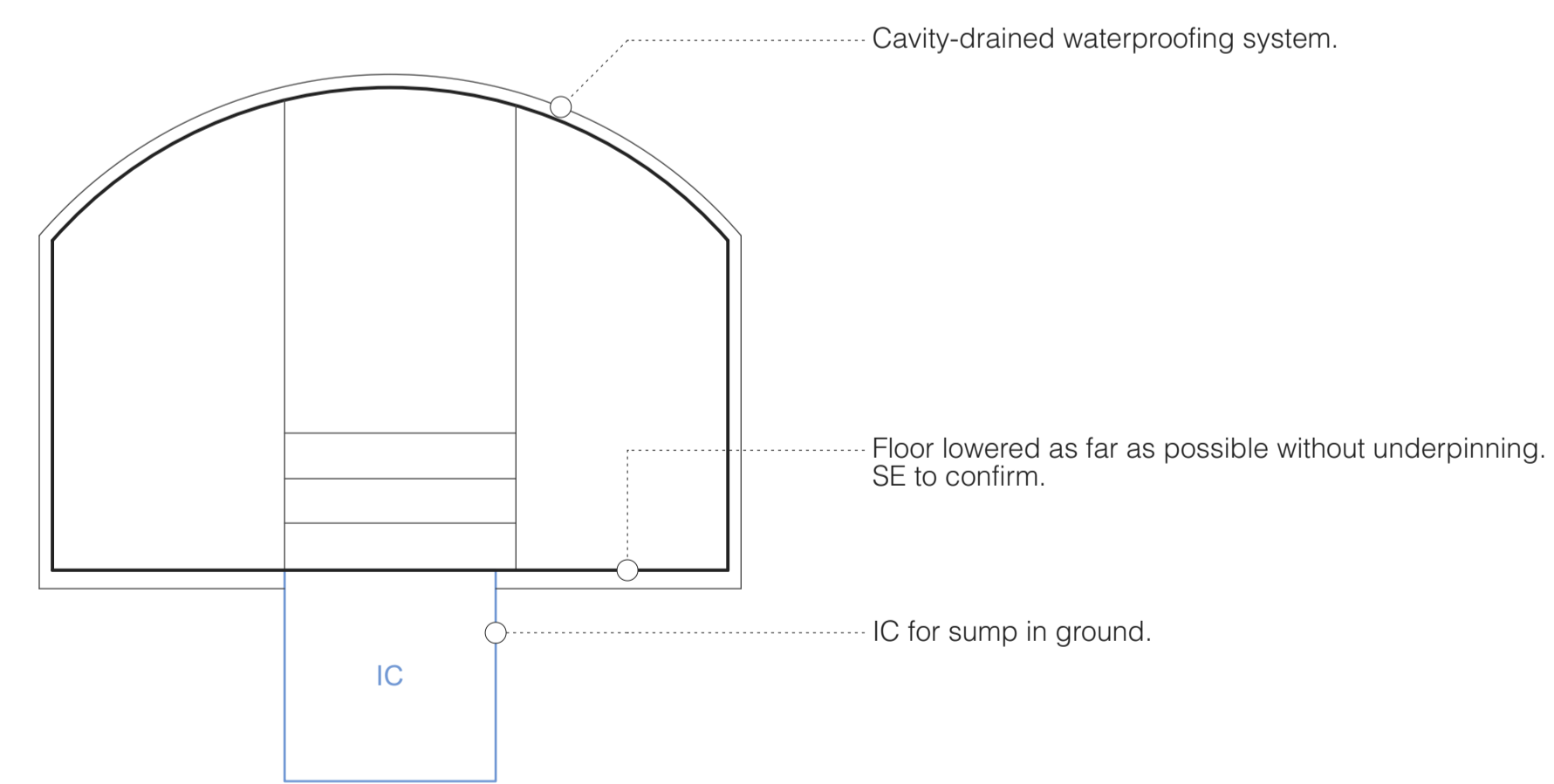
**A Plan**  
Scale: 1:25 @ A1



**B Elevation**  
Scale: 1:25 @ A1



**D Elevation (extg)**  
Scale: 1:25 @ A1



**C Vault Section**  
Scale: 1:25 @ A1

