



Photograph Of Existing Site

NEW SASH WINDOWS

The new/ replacement timber sash windows are to accurately replicate, in terms of material, profile and detailing, the original/ historic timber windows.

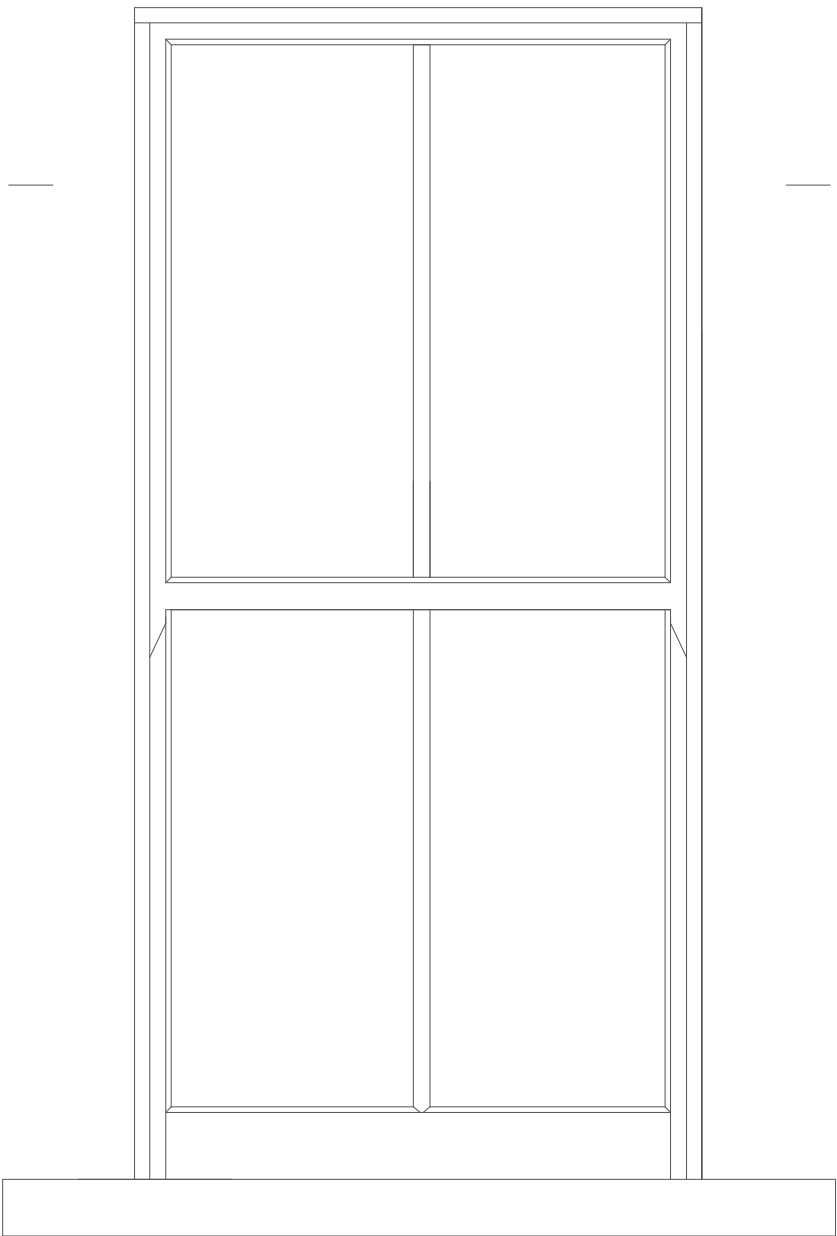
They are to be:

- Painted timber;
- Double hung sash windows with narrow, integral (not applied) glazing bars with a true putty finish;
- Glazing to be 12mm in total thickness (4mm glass; 4mm argon filled cavity; 4mm glass);

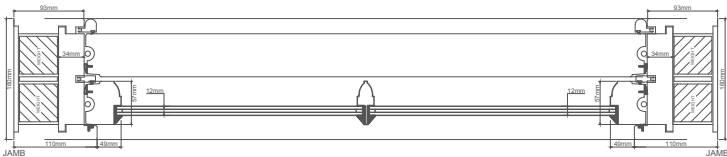
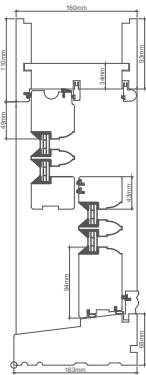
There are to be no horns, trickle vents or metallic/ perforated spacer

A

A



External Elevation of sliding box sash window
Scale 1:10



Section A - A of sliding box sash window
Scale 1:10