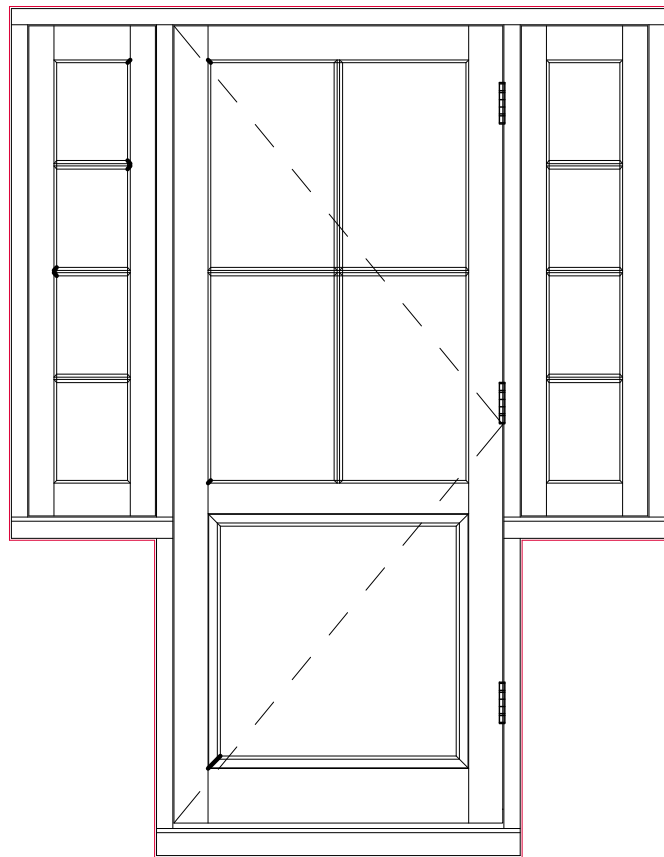
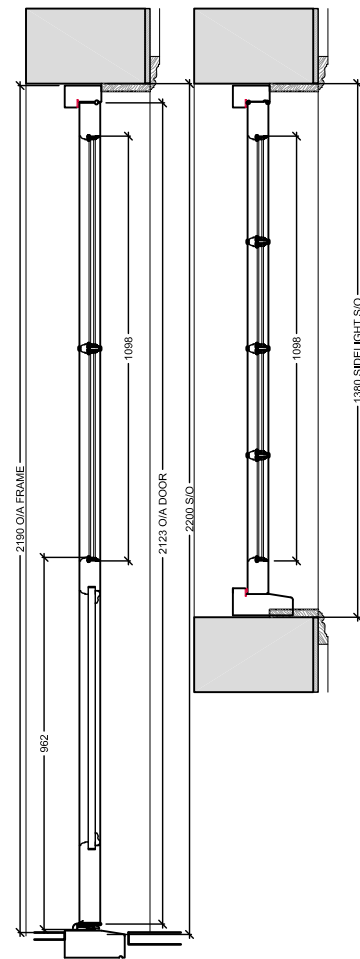


1 Plan
1:10 @ A1



3 External Elevation
1:10 @ A1

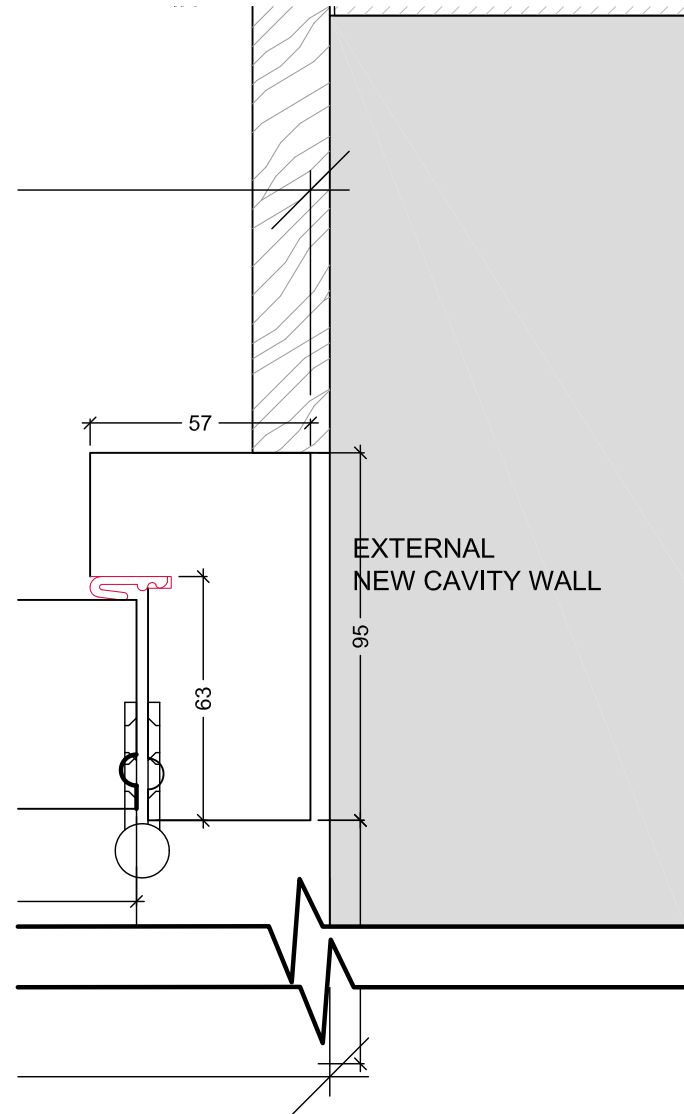


4 Section
1:10 @ A1



2 Key Elevation
Not to scale

Back painted
RAL 7022 - umbra grey



5 External Door - Interior Architrave Detail
1:1 @ A1

Copyright: All rights reserved. This drawing must not be reproduced without permission.
Only the original drawing should be relied upon. Contractors, sub-contractors and suppliers must verify all dimensions on site before commencing any work or making any shop drawings.
All shop drawings to be submitted to the architect / interior designer for comment prior to fabrication.
This drawing is to be read in conjunction with the architect's / interior designer's specification, Bills of quantities / schedules, structural, mechanical & electrical drawings and all discrepancies are to be reported to the architect / interior designer.
Do not scale from this drawing. Dimensions are in millimetres unless otherwise stated.
All the related elements and items as set out within the Fire Engineers Fire Strategy Report, Fire rating of elements / components require the certification from certified test bodies to be provided to both the Fire Engineer & Building Control for review and sign off, prior to procurement and installation.
Studio Moren Ltd will coordinate with all other consultants in relation to statutory items / elements under that consultants control. These items may be shown on Studio Moren Ltd drawings for coordination purposes, however they remain under that consultants design and control.

NOTES

- To be read in conjunction with the Door Schedule.
- Refer to General Arrangement drawing A-100-series for door swing directions & door numbers.
- Refer to RBA Acoustic Report for door acoustic requirements.
- Refer to Studio Farenheit Fire Report for door fire rating requirements.
- Intumescent seals to be applied to fire doors only.
- Acoustic seals to be applied to door frames of Guestroom Entrance Doors, and fitted with drop down seals to meet acoustic performance required.
- All cross-corridor doors to be kept open with magnetic hold open devices, release on Fire Alarm.
- Frame to be manufactured out of red grandis with sapele cills.
- Doors to be manufactured out of accoya with tricoya bottom panels.
- Double glazed with 4mm optiwhite / 8mm krypton / 4mm climaguard a 1,0 - white spacer bar.
- All glass to be toughened.
- Doors fitted with free issue ironmongery
- Fully finished in micro porous sikkens standard white ral 9016.

NOTE:
GUESTROOM MAIN ENTRANCE DOORS
ACOUSTIC RATING: Rw35 dB RATING
AS CONFIRMED BY RBA
GUESTROOM MAIN ENTRANCE DOORS
FIRE RATING: FULL DOOR SET FD30S
AS CONFIRMED BY STUDIO
FARENHEIT

P1	Scale bars added	20.08.24	AF
P0	Issued for information	08.07.24	AF
rev	amendments	date	by

studio moren
studio moren Ltd
architecture urban design
interior design creative media
www.studiomoren.co.uk
studio@studiomoren.co.uk

57d
jamestown road
london nw1 7db
UK

t: 020 7267 4440

project
4-6 Bedford Place

client
X Construct

drawing title
Door Details
Rear Facade Doors

drawing status
For Planning

scale	date	drawn by
Varies As noted	07.07.24	AF

job no.	drawing no.	revision
1890	A-570-105	P1
XC126	STM	BP B1 DR A
		570 105

