



PHOTO A.

CORNER OF GUILFORD STREET AND MILLMAN STREET.



PHOTO B.

VIEW ALONG MAIN FRONTAGE OF GUILFORD STREET.  
address  
15-16 GUILFORD STREET  
LONDON WC1N 1DX.  
PHOTOGRAPHS 1 OF 2.



PHOTO C.

CORNER OF GUILFORD STREET AND DOUGHTY MEWS.



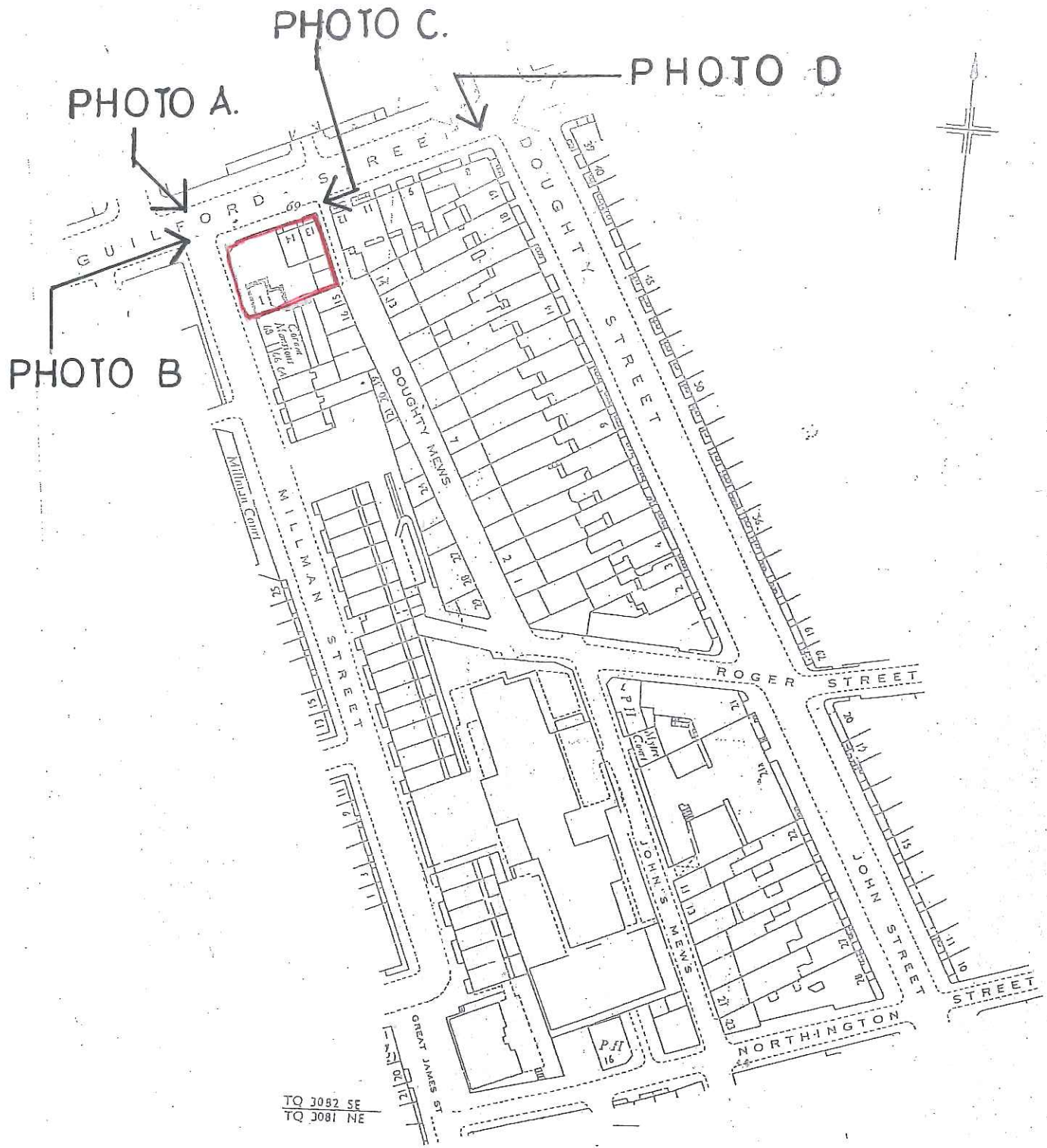
PHOTO D.

CORNER OF GUILFORD STREET AND DOUGHTY STREET.  
Nº 8 THE ARTS SOCIETY OFFICE BUILDING.

address

15-16 GUILFORD STREET  
LONDON WC1N 1DX.

PHOTOGRAPHS 2 of 2.



address.

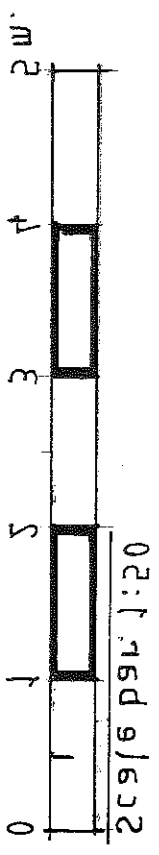
13-16 GUILFORD STREET  
LONDON WC1N 1DX

title.

LOCATION PLAN

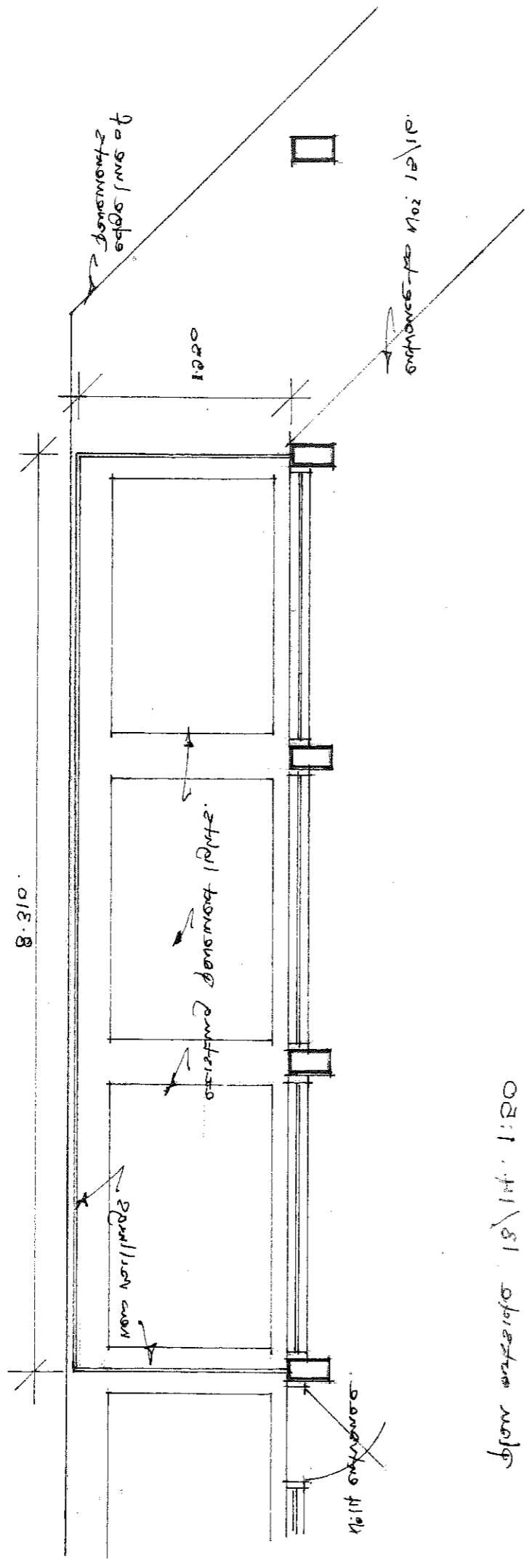
|        |         |         |
|--------|---------|---------|
| scale  | date    | dwg n°  |
| 1:1250 | JULY 20 | 554/12. |

. 2011 2011 2011 2011  
 . 2011 2011 2011 2011  
 . 2011 2011 2011 2011  
 . 2011 2011 2011 2011

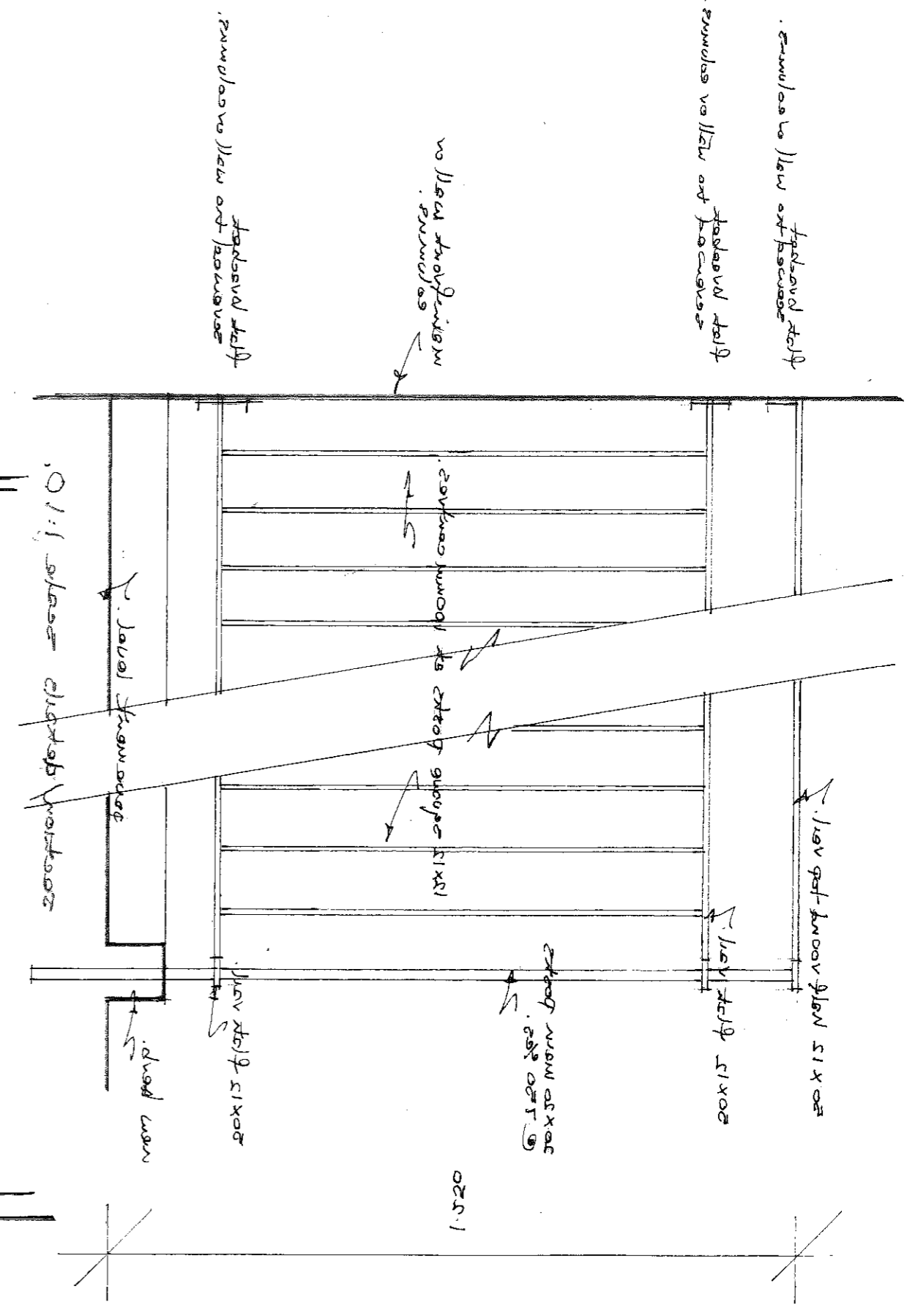
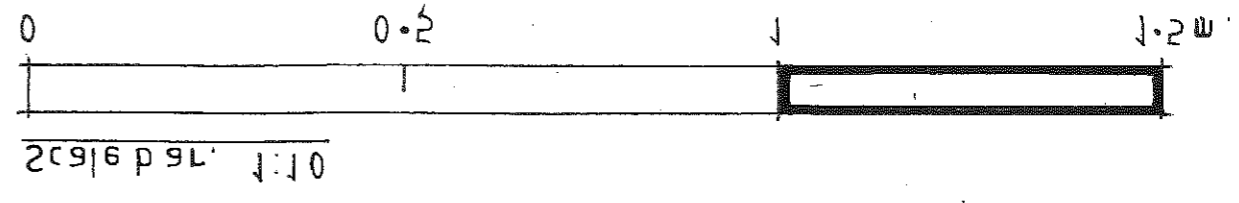
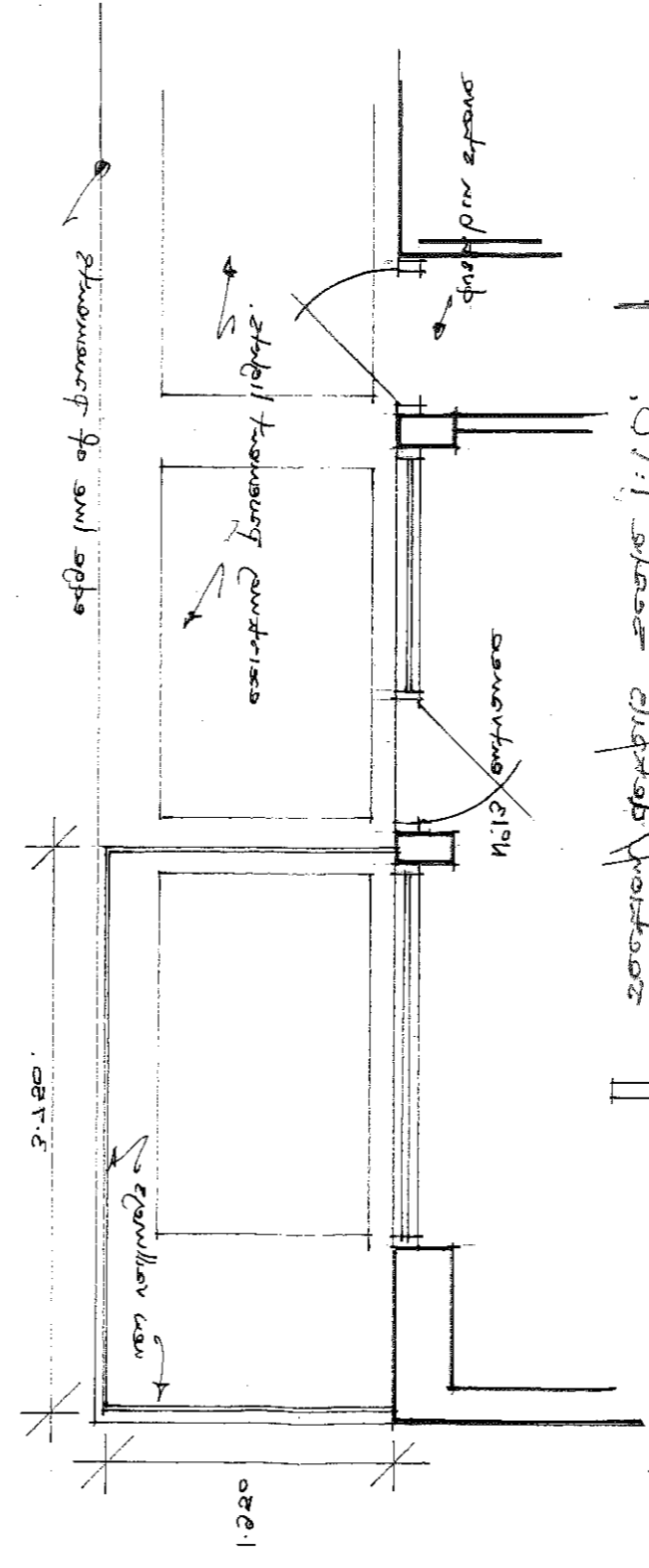


. 2011 2011 2011 2011  
 . 2011 2011 2011 2011  
 . 2011 2011 2011 2011  
 . 2011 2011 2011 2011

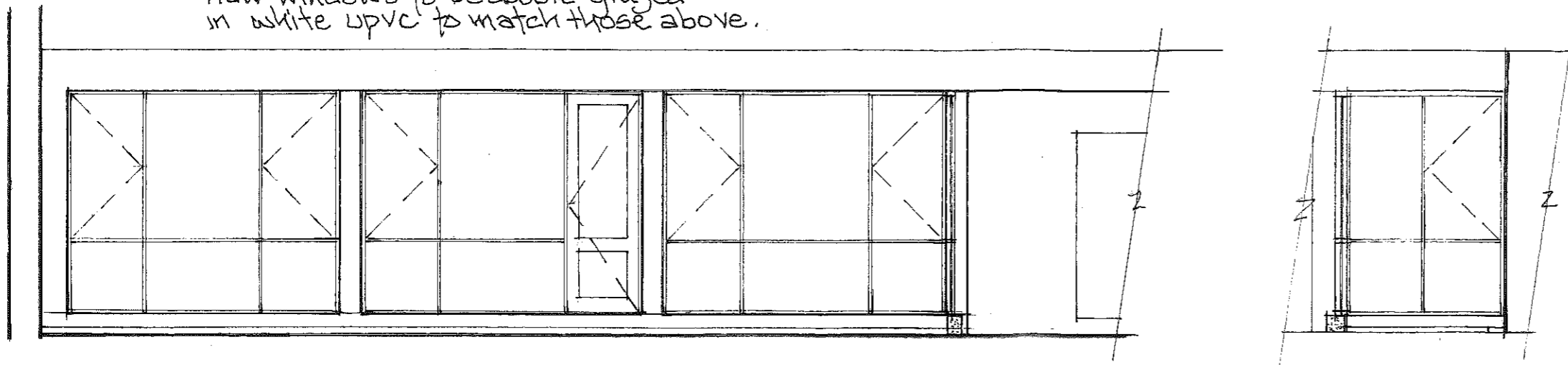
. 2011 2011 2011 2011  
 . 2011 2011 2011 2011



. 2011 2011 2011 2011  
 . 2011 2011 2011 2011

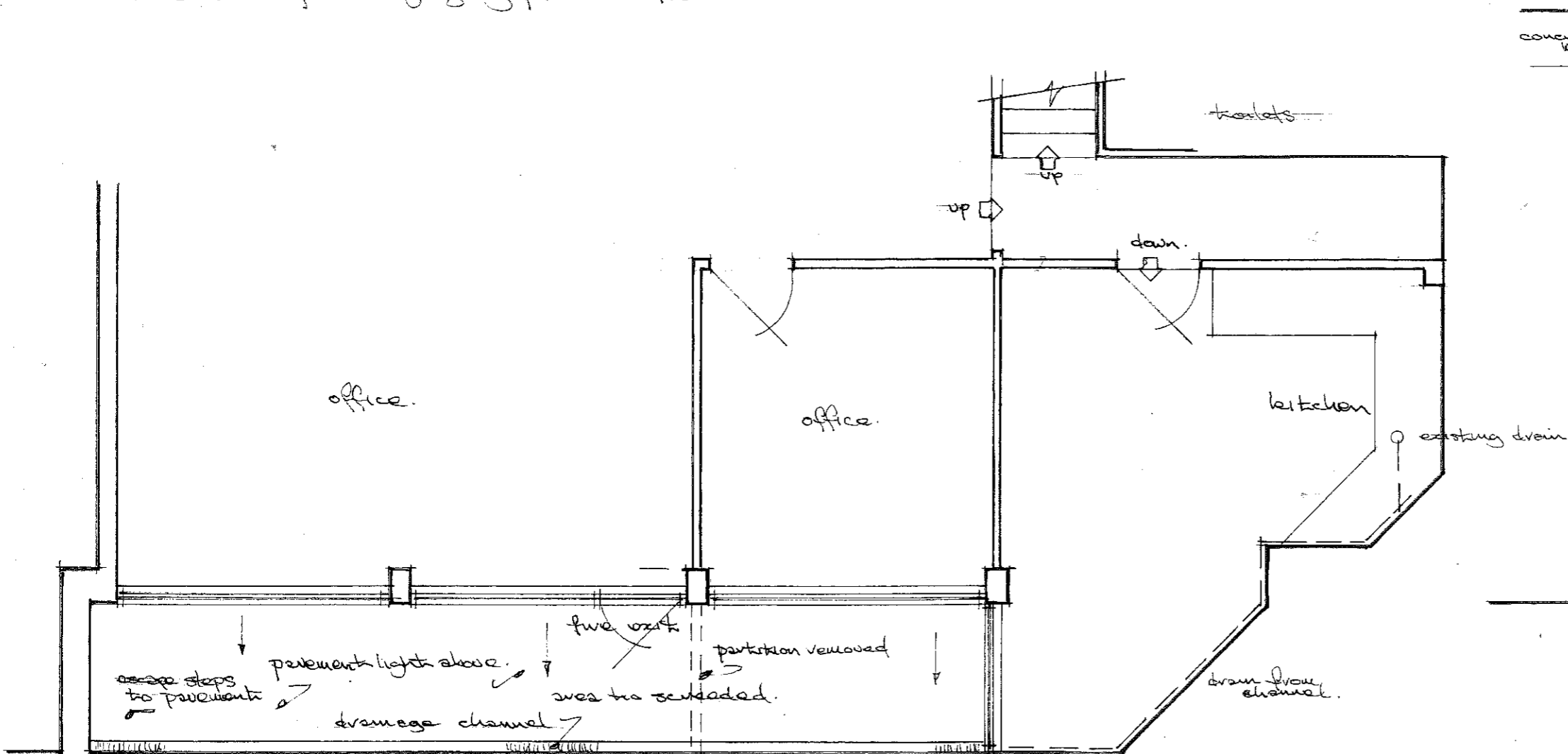


new windows to be double glazed  
in white UPVC to match those above.

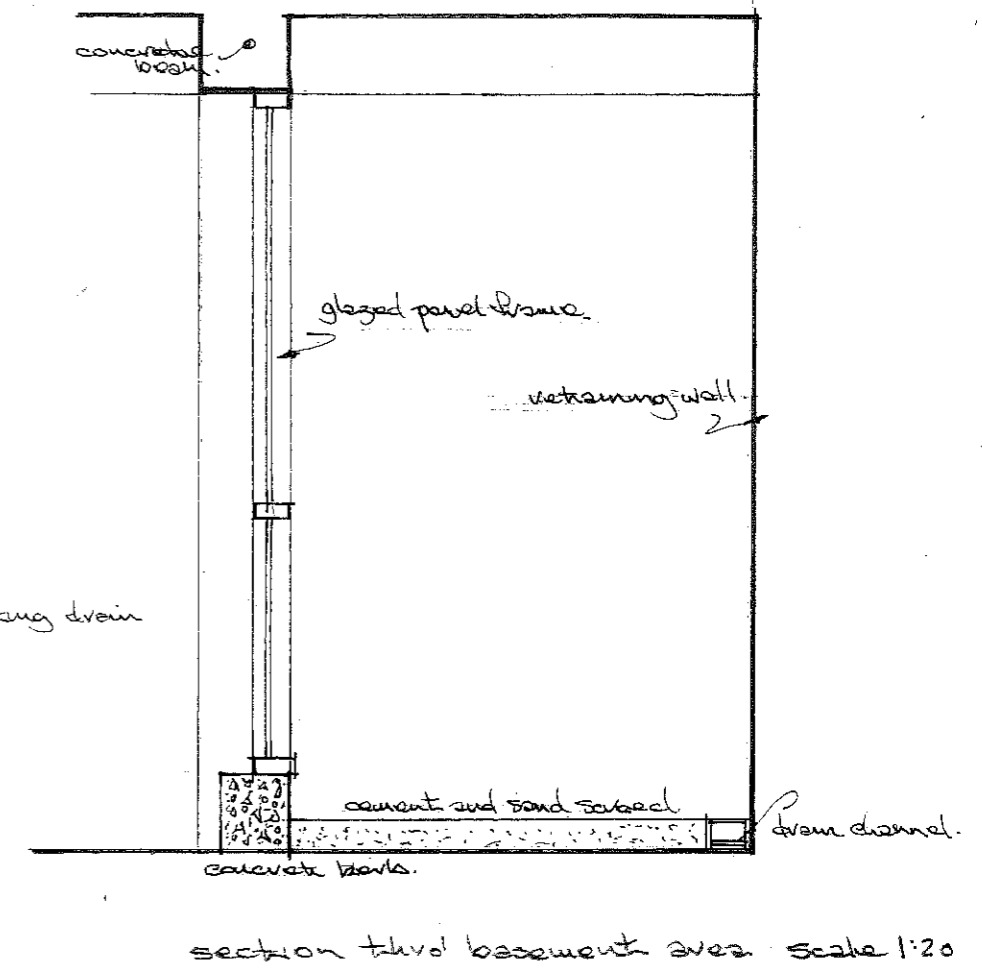
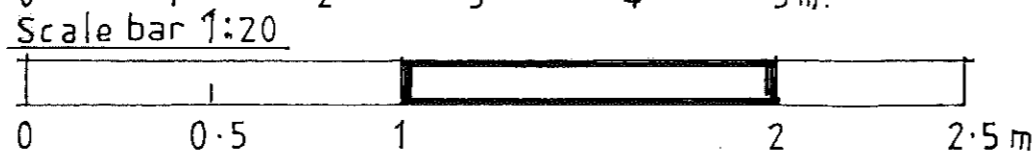


elevation of new glazing panels. 1:50

return elevation. 1:50



basement plan. 1:50



section thro' basement area. scale 1:20

work to basement area at:-  
13-16 Goulford Street  
London. WC1N 1DX  
scale:- 1:50. 1:20.  
drawing no:- 554/11.

Penminster Brown Pls.  
27 Vicarage Road, London. SW14 8RZ  
0208-878-3234